

MILWAUKEE
REP

BEEHIVE

The 60s Musical



Created by **Larry Gallagher**

Directed by **Laura Braza**

NOVEMBER 11, 2022 – JANUARY 15, 2023 | STACKNER CABARET

CHINA BEFORE COMMUNISM
神韻晚會 2023
SHEN YUN



“★★★★★

I've reviewed about 4,000 shows,
none can compare to what I saw tonight!”

—Richard Connema, renowned Broadway critic

“There is a massive power in this that can embrace the world.
It brings great hope... It is truly a touch of heaven.”

—Daniel Herman, Minister of Culture of the Czech Republic

“A life-changing experience. Entertainment of the highest order.”

—Stage Whispers

ORDER TICKETS NOW

Feb 17–19 • Miller High Life Theatre

ALL-NEW PROGRAM WITH LIVE ORCHESTRA

800-800-4410

ShenYun.com/Milwaukee





Knight | Barry

TITLE GROUP
Our People. Your Success.

With hundreds of experienced title and closing professionals and a skilled staff of problem solvers in over 80 offices in Wisconsin, Michigan, Minnesota, Florida and Texas, Knight Barry Title is ready to provide fast and accurate services to commercial and residential customers...both large and small.

WWW.KNIGHTBARRY.COM

Knight Barry Title, Inc., 201 E. Pittsburgh Ave., Suite 200, Milwaukee, WI 53204



FRENCH TWIST

*Althea's
Fine Lingerie*

777 North Jefferson Street
AltheasFineLingerie.com



SCAN ME

OAC

OCONOMOWOC ARTS CENTER

2022-2023



*A Kodachrome Christmas
with John McGivern
December 17 & 18, 2022*



*The Hunger –Up w/ Michael Perry
January 6 & 7, 2023*



*Jason Gillette & The Showtime Big Band
January 14, 2023*



*A Rock 'N' Roll Tribute from Elvis to the
Beatles Featuring The Nevery Brothers
March 11, 2023*



*ComedySportz
March 18, 2023*



*Barley Jacks
March 25 & 26, 2023*



*Doobie Others
May 20, 2023*

15TH ANNIVERSARY

641 E Forest St, Oconomowoc

www.TheOAC.net | info@TheOAC.net | 262.560.3172



Mark Clements
Artistic Director



Chad Bauman
Executive Director

#WeRepMilwaukee

Robert Burrell Presents

BEEHIVE

The 60s Musical

Created by **Larry Gallagher**

Directed by **Laura Braza** ♦

Music Director
Tom Vendafreddo

Choreographer
David P Roman

Scenic Designer
Maureen Chavez-Kruger

Costume Designer
Jason Orlenko

Lighting Designer
Caitlin Smith Rapoport

Sound Designer
Erin Paige

Casting Director
Dale Brown Casting

Stage Manager
Emily Marie Wilke*

NOVEMBER 11, 2022 – JANUARY 15, 2023 | STACKNER CABARET

Part of The David Kundert Stackner Cabaret Season

Executive Producers
Judi & Chris Collins
Beth & Pete Gottsacker
John Halechko & Marc Colletti

Associate Producers
Karen & Mark Bitzan
Maureen McCabe

Sponsored in part by:




Beehive is presented through special arrangement with and all authorized performance materials are supplied by Theatrical Rights Worldwide, 1180 Avenue of the Americas, Suite 640, New York, NY 10036.
www.theatricalrights.com

Performance and rehearsal musical tracks provided by Right On Cue Services
www.RightOnCueServices.com

♦ A member of Stage Directors and Choreographers Society, an independent national labor union.

*Denotes an artist represented by Actors' Equity Association, the Union of Professional Actors and Stage Managers in the United States.

#WeRepMilwaukee



Milwaukee Rep is the largest performing arts organization in Wisconsin, typically welcoming 300,000 people at 700 performances of 14 productions a season at the Patty & Jay Baker Theater Complex featuring three unique performance venues – the Quadracci Powerhouse (720 seats), Stiemke Studio (205 seats) and Stackner Cabaret (186 seats). For over six decades, Milwaukee Rep has been a centerpiece of Milwaukee's vibrant arts and cultural scene with productions ranging from Broadway musicals to Shakespeare to American Classics and New Works that are entertaining, inclusive and impactful.

Under the leadership of **Artistic Director Mark Clements** and **Executive Director Chad Bauman**, Milwaukee Rep creates world-class theater experiences for our audiences and uses education and civic engagement to bring diverse people together for healthy and respectful dialogue around important issues facing us today.

Just like Milwaukee, we're not what people usually expect. **We're more diverse. More impactful. More modern.** From the stage to the streets, the things we do, we do to bring out the best in our region. Our work is representative of Milwaukee's rich diversity as we aim to be a theater that is welcoming and inspirational to all.

www.MilwaukeeRep.com
414-224-9490



30
SEASON
2022-23
RESILIENT

renaissance
THEATERWORKS
Theater by Women For Everyone

255 S Water St
Tickets: 414-278-0765
R-T-W.com

Jan 20 - Feb 12

Cost of Living

by Martyna Majok

Midwest Premiere

Directed by
Ben Raanan

2018
PULITZER
PRIZE
DRAMA

This achingly human and surprisingly funny play is about the forces that bring people together, the realities of facing the world with disabilities and how deeply we all need each other.



"[COST OF LIVING] slams the door on uplifting stereotypes...Tremendous emotion flows around the impediments Majok has placed in the characters' paths...In both of [the play's] stories...the biggest handicaps are the universal ones: fear and disconnection...immensely haunting...[Majok] is exquisitely attuned to the many varieties of alienation hiding in plain sight in America."
—NY Times

In collaboration with Phamaly Theatre Company & Pink Umbrella Theater Company
Generously sponsored by Judges Jean & John DiMotto

CAST

Alison.....	Jackey Boelkow*
Laura.....	Sarah Lynn Marion*
Pattie.....	Tess Marshall*
Wanda.....	Jamie Mercado*
Jasmine.....	Desiree Tolodziecki*
Gina.....	Amaya White*

Understudies

Patti Meadors for Wanda, Alison; **Jaelyn Raiford** for Gina, Pattie;
Daydra Smith for Jasmine; **Lindsey Volk** for Laura

*Denotes an artist represented by Actors' Equity Association, the Union
of Professional Actors and Stage Managers in the United States.

Next Up in the Stackner Cabaret

The “King of Cool” is Back

Dino!

AN EVENING WITH
DEAN MARTIN

Including classic hits such as “Ain’t That a Kick in the Head,”
“Everybody Loves Somebody,” “That’s Amore” and more!

By **Armen Pandola** | Directed by **Jonathan Hetler** **January 20 – March 19, 2023**

PRODUCTION SUPPORT

Stage Management Resident.....	Emily Pfaff
Assistant Director.....	William Freeman III
Line Producer.....	Jeffrey Mosser

Beehive: The 60s Musical will be performed with a 15 minute intermission.

The videotaping or other video or audio recording of this production is strictly prohibited.

SPECIAL THANKS

Wigs provided by Wigboys

PRODUCTION STAFF

Director of Production.....	Jared Clarkin
Associate Production Manager.....	Kaitlyn Anderson
Technical Director.....	Sean Walters
Associate Technical Director.....	Joseph Fry
Properties Director.....	Kelly Kreutsberg
Charge Scenic Artist.....	Jim Medved
Costume Director.....	Nicholas Hartman
Lighting Director.....	Dakota Kroes
Sound & Video Director.....	Tate E Thompson
Production Stage Manager.....	Kimberly Carolus

Milwaukee Repertory Theater operates under an agreement between the League of Resident Theatres and Actors' Equity Association, the Union of Professional Actors and Stage Managers in the United States. The scenic, costume, lighting and sound designers in LORT Theatres are represented by United Scenic Artists, Local USA-829 of the IATSE and our stagehands and carpenters are members of Milwaukee Theatrical Stage Employees' Union IATSE Local 18. Milwaukee Rep is an equal opportunity employer. Milwaukee Rep is proud to be a member of The United Performing Arts Fund (UPAF), which provides major annual financial support.



Even the Bees Found a Great Home Here!



It was Resident Holger Petersen's inspiration to give bees a home here. So in 2014, he started the Garden & Nature Fund for the Bee Project and Butterfly Garden. Holger, on the left, is pictured with Charlie the Beekeeper and Resident and Artist Cheri Briscoe, who painted our beautiful new hive which sets above the bluff overlooking Lake Michigan.



The best in retirement living includes...

- A culturally respectful and intellectually stimulating community
- 67,000 square feet of Town Center to explore
- Two restaurants and many opportunities to socialize!

Call to get the buzz about life at Saint John's!



SAINT JOHN'S
ON THE LAKE

www.SaintJohnsMilw.org 414-831-7300
1840 N. Prospect Avenue, Milwaukee, Wisconsin 53202

SONGS AND CREDITS

“Round the Beehive/Lets Rock” by Claudia Brevis

“The Name Game” by Lincoln Chase and Shirley Elliston/
EMI El Gallico Music/Used With Permission

“It’s My Party” by John Gluck, Walter Gold, Seymour
Gottlieb, and Herbert Wiener/Warner Chappell Music, Inc./
ASCAP/Used With Permission

“Where Did Our Love Go” by Edward Holland, Lamont
Dozier, and Brian Holland/Stone Agate Music, a division of
Jobete Music Co. Inc./Used With Permission

“Come See About Me” by Edward Holland, Lamont Dozier,
and Brian Holland/Stone Agate Music, a division of Jobete
Music Co. Inc./Used With Permission

“Walking in the Rain” by Barry Mann, Phil Spector, and
Cynthia Weil/EMI Music Publishing/Used With Permission

“I Sold My Heart to the Junkman” by Leon Rene and Otis
Rene/EMI Unart Catalog Inc./Used With Permission

“Academy Award” by V. Catalano, A. Levinson, P. Alonso/
EMI Unart Catalog Inc./Used With Permission

“I’ll Never Change Him” by Guy Hemric, Jerry Styner/
Donna Dijon Music Publications/Used With Permission

“Sweet Talkin’ Guy” by Doug Morris, Elliot Greenberg,
Barbara Baer, & Robert Schwartz/Screen Gems-EMI Music
Inc./Used With Permission

“You Can’t Hurry Love” by Herbert Dozier, Brian Holland,
Eddie Holland/Stone Agate Music/Used With Permission

“My Boyfriend’s Back” by Richard Gotttehrer, Robert
Feldman, & Gerald Goldstein/EMI Blackwood Music Inc./
Used With Permission

“Will You Still Love Me Tomorrow” by Gerry Goffin
and Carole King/Screen Gems-EMI Music Inc./Used With
Permission

“One Fine Day” by Gerry Goffin and Carole King/Screen
Gems-EMI Music Inc./Used With Permission

“Where the Boys Are” by Howard Greenfield and Neil
Sedaka/Screen Gems-EMI Music Inc./Used With Permission

“Be My Baby” by Jeff Barry, Ellie Greenwich, and Philip
Spector/EMI Music Publishing/Universal Music Publishing
Group/Used With Permission

“Then He Kissed Me” by Jeff Barry, Ellie Greenwich, and
Philip Spector/EMI Music Publishing/Used With Permission

“Baby I Love You” by Jeff Barry, Ellie Greenwich, and Philip
Spector/EMI Music Publishing/Universal Music Publishing
Group/Used With Permission

“Beehive Dance” by Claudia Brevis/Used With Permission

“Abraham, Martin, and John” by Dick Holler/Regent Music
Corp./Used With Permission

“You Don’t Own Me” by John Madara and David White/
Sony/ATV Music Publishing/Used With Permission

“Son of a Preacher Man” by John Hurley and Ronnie
Wilkins/Sony/ATV Tree Publishing/Used With Permission

“To Sir with Love” by Don Black and Mark London/Screen
Gems-EMI Music, Inc./Used With Permission

“British Invasion Cut Short” by J.C. Fogerty/Fourteenth
Hour Music/Used With Permission

“River Deep Mountain High” by Jeff Barry, Ellie Greenwich,
and Phillip Spector/Warner Chappell Music, Inc./Used With
Permission

“Proud Mary” by J.C. Fogerty/Fourteenth Hour Music, Inc./
Used With Permission

“Chain of Fools” by Donald Covay/Fourteenth Hour Music,
Inc./Used With Permission

“(You Make Me Feel Like) A Natural Woman” music &
lyrics by Gerry Goffin, Carole King and Gerald Wexler/Used
With Permission

“Never Loved a Man (the Way That I Loved You)” by
Ronnie Shannon/Fourteenth Hour Music, Inc.

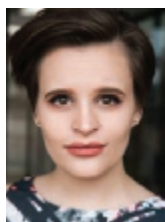
“Somebody to Love” by Davney R. Slick (aka Darby Slick)/
Irving Music/Used With Permission

“Cry Baby” by Bert Berns and Norman Meade/Sony/ATV
Music Publishing LLC, Warner Chappell Music, Inc./Used
With Permission

“Try (Just a Little Bit Harder)” by Jerry Ragovoy and Chip
Taylor/Warner Chappell/Used With Permission

“Me and Bobby McGee” by Kris Kristofferson and Fred
Foster/EMI Blackwood Music, Inc./Used With Permission

“Make Your Own Kind of Music” by Barry Mann and
Cynthia Weil/Screen Gems-EMI Music, Inc./Used With
Permission



Jackey Boelkow
Alison

Jackey is jazzed to be returning to Milwaukee Rep after appearing as a Swing for *Titanic The Musical*. Select credits include Dennis DeYoung's

The Hunchback of Notre Dame (Ensemble/Romani Cultural Consultant) and *The Full Monty* (Molly, Ensemble, Vicki U/S) at Skylight Music Theatre, *The Comedy of Errors* (Adriana) and *The Death of Kings: Seize the Crown* (Margaret) at Prague Shakespeare Company, Principal and Swing for Kohl's Wild Theater, *Margaret* (Margaret) at Voices Found Repertory, and *Carrie* (Chris) at Outskirts Theatre Co. Jackey holds her BFA in Musical Theatre from UW Stevens Point.

@JackeyBoelkow
www.JackeyBoelkow.com



Sarah Lynn Marion
Laura

Sarah Lynn is thrilled to be making her Milwaukee Rep debut! Originally from Southern California, she is an actor, singer, and model based in New York

City. Previously, she appeared in the critically acclaimed Off-Broadway revival of *Ordinary Days* as Deb. Regional: *Kinky Boots* (Bucks County Playhouse), *All Shook Up* (The MUNY). TV: *High Maintenance* (HBO). BFA in Musical Theatre, University of Michigan. Jimmy Award Winner. CS Music Award Winner. All my love to Momma, Jacob, my siblings, and my nieces and nephews for their endless love and support. Grateful to be creating art.

@sarahlynnmarion



Tess Marshall
Pattie

Tess is thrilled to be here in Milwaukee for the first time! TV: Dionne in NBC's *Ordinary Joe*. New York Theatre: *Ragtime* on Ellis Island, *The Wives of*

Henry VIII. Favorite regional credits: *Noises Off* (Belinda); *Young Frankenstein* (Inga, Elizabeth); *Spamalot* (Lady of the Lake); *The Sound of Music* (Elsa); *Addams Family* (Morticia); *American Idiot* (Heather). Tess is also the long-time front woman of her classic rock band, Clyde Frog. So happy we're all here together. Glory to God.

Website: tessmarshall.com
Instagram: tess_marshall



Jamie Mercado
Wanda

Jamie is delighted to be back at Milwaukee Rep this winter! She was last seen on the Stackner Cabaret stage as Cordy in *Dad's Season Tickets*.

Other credits include: *Dad's Season Tickets* and *Tongue 'n Cheek* at Northern Sky Theater, *The Hunchback of Notre Dame* and *Newsies* at Skylight Music Theatre, and *Matilda* at First Stage. Jamie would like to dedicate this performance to all of the women in her life who constantly inspire her, especially her mom, Patty - she would have loved this show.

For book recommendations and sewing adventures, follow her on Instagram:

@jamielynnmercado



Desireé Tolodziecki
Jasmine

Desireé is grateful to work with this incredible cast and creative team! Desireé earned her B.A in Music at the University of North Carolina at

Greensboro. She then went on to receive her Masters of Music (Music Theatre) from New York University Steinhardt, where she starred in *Sister Act* as Deloris Van Cartier. Other credits include: the world premiere of *Personality: The Lloyd Price Musical* (Emma) at People's Light, *Memphis* (Felicia Farrell) at North Carolina Theatre, *The Bodyguard* (Nicki Marron u/s) at North Shore Music Theatre, *Caroline, or Change* (Radio 1), and *The Wiz* (Dorothy). Desireé is thankful to God for this opportunity. She'd also like to thank her wonderful husband Matthew for being supportive in her career, the creative team, her chosen family, and the team at Hudson Artists Agency. Jeremiah 1:5



Amaya White
Gina

Amaya is thrilled to be making her Milwaukee Rep debut! Amaya is a graduate from Montclair State University and a New Jersey native. She recently

starred as Casey Seeger in *An Officer and a Gentleman* (1st national tour). Other credits include: *Jelly's Last Jam*, *Baby: The Musical*, *Hair*, and *Priscilla Queen of the Desert*. Endless thanks to God, the Collective, family, and friends. amayawhite.com @yourstrulyamaya

CREATIVE TEAM



Laura Braza
Director

MILWAUKEE REP: *Steel Magnolias*, *Grounded*, *Souvenir*, *Always... Patsy Cline*, *Songs For Nobodies* (American Premiere), *2 Pianos 4 Hands*. NEW

YORK: 10 plays for The Attic Theater Company, including *The Tutors*, *The Notebook of Trigorin* (NY Premiere), *Strictly Dishonorable*, and *Jericho* (World Premiere); world premieres of *Friend of the Devil*, *If I Were You* (Clurman Theatre); work at Keen Company, New York Musical Theatre Festival, FringeNYC, Atlantic Theater Company Stage II, and more. CHICAGO: *We Are Out There*, *It Came from Outer Space* (Chicago Shakespeare Theater, Jeff Nomination Directing). REGIONAL: *It Came from Outer Space* (TheatreSquared); *The Dispute* (Hangar Theatre); *Theophilus North* (Dog Days Theatre with FSU/ Asolo Rep). EDUCATION: BFA from NYU/Tisch School of Drama, Drama League Directors Project Alumnus. Guest Director/Teaching Artist: University of North Carolina School of the Arts and New York University Stella Adler Studio of Acting. Laura was Artistic Director of The Attic Theater Company in NYC from 2009–2019 and currently is Associate Artistic Director of Milwaukee Repertory Theater. Proud SDC Member.

Tom Vendafreddo
Music Director

NAT'L TOURS: *Mean Girls*, *Les Misérables*. REGIONAL: *It Came from Outer Space*, *Road Show* (Chicago Shakespeare Theater); *Sweeney Todd* (Jeff Award - Music Direction), and over twenty other productions (Paramount Theatre); *On the Town*, *Godspell* (Marriott Theatre); *Company*, *Sweet Charity* (Writers Theatre); *A Little Night Music*, *Spitfire Grill* (Bohemian Theatre Ensemble); *Billy Elliott*

(Signature Theatre - DC); *Odyssey* (Old Globe Theatre); *Murder for Two*, *In the Heights* (Mason Street Warehouse); *The Who's Tommy* (Music Theater Heritage); *Rent* (San Diego Musical Theatre); *The Wedding Singer* (Red Mountain Theatre Company); *The 25th Annual Putnam County Spelling Bee* (Capital City Theatre). EDUCATION: BM: Eastman School of Music. MFA: San Diego State University. AWARDS: 2020 Illinois Theatre Association Award of Excellence in Professional Theatre. IG @tvendafreddo

David P Roman
Choreographer

David is happy to be returning to Milwaukee Rep with *Beehive*, after previously choreographing *The Legend of Georgia McBride*. You also may have seen his work in *Newsies* for Skylight Music Theatre, or on stage in *In the Heights* and *Pippin*. As an educator, he has served as one of the primary Jazz Styles teachers and curriculum writer for the Milwaukee Ballet School & Academy and an alumnus of the Milwaukee H.S. of the Arts. When not working locally, David has spent much of the last two decades performing at sea, before becoming part of the new cast production team for Royal Caribbean International.

Maureen Chavez-Kruger
Scenic Designer

Maureen is delighted to return to the Stackner Cabaret after a successful run of *My Way: A Musical Tribute to Frank Sinatra* last season. Her regional design work includes productions at Milwaukee Repertory Theater, First Stage, Next Act Theatre, Milwaukee Chamber Theatre, Carthage College, Lawrence University, and UW-Milwaukee Peck School of the Arts. Maureen holds an MFA in Scene Design from Boston University and is currently teaching at Carthage College and Milwaukee Institute of Art and Design: MIAD. She served as a board member for Milwaukee Chamber Theatre (2014-2020).

Jason Orlenko
Costume Designer

Jason is delighted to return to Milwaukee Rep, where he has designed *My Way: A Musical Tribute to Frank Sinatra*, *The All Night Strut!*, *Souvenir*, *Lady Day*, *Forever Plaid*. Around Milwaukee: Skylight, First Stage, Renaissance Theaterworks, Milwaukee Chamber, Next Act, In Tandem, Milwaukee Opera Theatre, UW-Milwaukee and Marquette University. Additional designs: Forward Theater, Repertory Theatre of St. Louis, Cardinal Stage, Indiana University Theatre, University of Alaska Anchorage. Other professional credits: American Players Theatre, the Florentine Opera and the Illinois Shakespeare Festival. Jason currently resides in Bloomington, Indiana where he heads the Costume Design Program at Indiana University. www.jasonorlenko.com

Caitlin Smith Rapoport
Lighting Designer

Caitlin is a New England based lighting designer. Her work has been seen in New York theaters including The Daryl Roth, Theatre Row, Ars Nova, SoHo Playhouse, 59E59, and New Ohio. Regional credits include Milwaukee Repertory Theater *My Way: A Musical Tribute to Frank Sinatra*, REDCAT, Yale Repertory Theatre, Two River Theater, TheatreSquared, Cape Fear Regional Theatre, and Totem Pole Playhouse. Including national and international tours, and work for LUCE Group on The National Museum of African American History and Culture. Broadway associate: *To Kill a Mockingbird*. MFA Yale School of Drama, BA UMass Amherst. United Scenic Artists, IATSE Local 829. caitlinsmithrapoport.com

Erin Paige
Sound Designer

Erin is delighted to return to the Stackner Cabaret, having previously designed *My Way: A Musical Tribute to Frank Sinatra*, *2 Pianos 4 Hands*, *Songs for Nobodies*, *Black Pearl Sings!*, *McGuire*, *An Evening with Groucho* and *The*

Doyle and Debbie Show. Other Milwaukee credits include *Elf the Musical*, *Junie B. Jones Is Not a Crook*, *Spookley the Square Pumpkin*, *Mole Hill Stories* and *Goldilocks* at First Stage, *King Lear* at The Alchemist and *Phaedra's Love* at The World's Stage. She holds a BFA in Sound Design from Southern Oregon University.

Dale Brown

Casting Director

With Milwaukee Rep: *Titanic The Musical*, *My Way*, *New Age*, *West Side Story*, *Things I Know To Be True*, *In the Heights*, *The Chinese Lady*, *The Who & The What*. Off-Broadway: *Our Brother's Son*, *Gorgeous Nothings* (both upcoming); *America Is Hard To See*, *Daddy Long Legs* (Drama Desk Nom); with Tara Rubin: *Phantom of the Opera*, *Billy Elliot*; *A Little Night Music*, *Jesus Christ Superstar*, *Guys and Dolls* (Broadway). Many thanks to Mark, Laura, et al. Great to be making live theater again! dalebrowncasting.com

Emily Marie Wilke

Stage Manager

Emily is ecstatic to be making her Milwaukee Rep debut! Credits include Utah Shakespeare Festival, First Stage Children's Theater, Skylight Music Theatre, Arizona Theatre Company, Opera Saratoga, and Flux Theatre Ensemble.

Emily Pfaff

Stage Management Resident

Emily is excited to be an Emerging Professional Resident in Stage Management this season. Emily has worked locally as a production assistant at American Players Theatre in their 2021 season, as a COVID compliance officer at Skylight Music Theatre, and regionally as the assistant stage manager at Kentucky Shakespeare in Louisville, KY for their 2022 summer season. Millikin University BFA in Stage Management. They would like to thank their family for their love and support.

William Freeman III

Assistant Director

Will is proud to be working with Milwaukee Rep as a 2022/23 Season Emerging Professional Resident. From Detroit, Michigan, Will received his degree in directing from Ball State University. Favorite projects include *Fun Home*, workshopping new works - like *Colvin* by Ciara Diane and his directorial debut with Rachel Bublitz's *Burst*.



Mark Clements

Artistic Director

Mark is an award-winning international theater director whose work has appeared in over 100 major theaters throughout Europe and the United States. He began his

tenure as Artistic Director with the 2010/11 Season by bringing musicals to the mainstage, starting a tradition that is now the highlight of every season. Milwaukee Rep directing credits include the world premieres of *One House Over*, his own adaptation of the current *A Christmas Carol*, *Five Presidents* and *American Song*. Also directed for Milwaukee Rep: *Jacob Marley's Christmas Carol*, *Things I Know To Be True* (American Premiere), *Junk*, *The Glass Menagerie*, *Of Mice and Men*, *Othello*, *Death of a Salesman*, *The History of Invulnerability*, *End of the Rainbow*, *Clybourne Park* and *Bombshells*. Some of his New York and international work includes *Speaking in Tongues*, *The Milliner* and *Blunt Speaking*, in addition to creating and directing the West End and UK National Tour of *Soul Train*. Prior to joining Milwaukee Rep, Mark served as an Associate Artistic Director for several UK theater companies, most notably, Artistic Director for the award-winning Derby Playhouse in the UK from 1992-2002, where he directed over 40 productions. He has been nominated for an Olivier Award and several UK Theatre Awards, and has won three Barrymore Awards from his time at Walnut Street Theatre in Philadelphia. Mark is currently working with Ayad Akhtar on adapting his critically acclaimed novel *American Dervish* for the stage to make its world premiere at Milwaukee Rep in an upcoming season.

Taking better care of yourself starts with finding the best doctors *to take care of you.*

When it comes to healthcare, you shouldn't settle for anything less than the perfect fit. You need physicians who are engaged. Who listen. Who spend time with you. We want to make a difference in your life, and the lives of your family.

INTERNAL MEDICINE



Kathleen Baugrud, M.D.



John Betz, M.D.



Matthew Connolly, M.D.



Kevin DiNapoli, M.D.



Deidre Faust, M.D.



Scott Jorgensen, M.D.



Unchu Ko, M.D.



David Lucke, M.D.

PULMONARY



Rachel Oosterbaan, M.D.



John Sanidas, M.D.



Abraham Varghese, M.D.



James Volberding, M.D.



Dima Adl, M.D.



Jay Balachandran, M.D.



Burak Gurses, M.D.

GASTROENTEROLOGY



Abdullah Fayyad, M.D.



Vijay Khiani, M.D.



Gene Kligman, M.D.



Venelin Kounnev, M.D.



Srihan Ramanujam, M.D.



Chad Stepke, M.D.



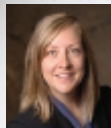
Anne Lent, M.D.



Kristin Schroederus, M.D.

ALLERGY & IMMUNOLOGY

ENDOCRINOLOGY



Amy DeGueme, M.D.



Elaine Drobny, M.D.



Antoni Gofron, M.D.



Usonwanne Ibekwe, M.D.



Brent Jones, M.D.



Kawaljeet Kaur, M.D.

MADISON MEDICAL AFFILIATES



MADISON MEDICAL

MILWAUKEE • MEQUON

MadisonMedical.com | 414.272.8950

SURGERY



Daniel Butz, M.D.



Richard Cattey, M.D.



Jasna Coralic, M.D.



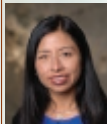
Alysandra Lal, M.D.



Joseph Regan, M.D.



Craig Siverhus, M.D.



Carmen Balding, M.D.



Camille Hoxzel, M.D.

MOHS SURGERY

UROLOGY



Kevin Gee, M.D.



Christopher Kearns, M.D.



Peter Slocum, M.D.



Jonathan Berkoff, M.D.



Katya Frantskevich, M.D.



Shireen Jayne, D.O.



Jennifer Morales, M.D.



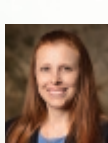
Nicolette Deveneau, M.D.

OBSTETRICS & GYNECOLOGY

UROGYNECOLOGY



Amanda Cooper, M.D.



Tracy Donahue, M.D.



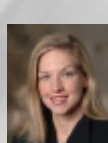
Valerie Lyon, M.D.



Jack Maloney, M.D.



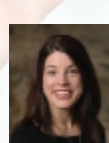
Jason Rosenberg, M.D.



Debra Scarlett, M.D.



Thorsteinn Skulason, M.D.



Heather Wells, M.D.

COMPREHENSIVE EYE CARE



Lisa Bennett, M.D.



Alwin Edakkunnathu, O.D.



James Ivanoski, O.D.



Joseph Zilisch, M.D.

Visit MadisonMedical.com
to learn more about our doctors
and their specialties.



Chad Bauman
Executive Director

Now in his tenth season at Milwaukee Rep, under Chad's guidance the theater has grown significantly from a \$9M to \$14M organization. He's completed two capital

campaigns, one to remodel and expand the Stackner Cabaret and the other to build the endowment, launch the John (Jack) D. Lewis New Play Development Program, create a new *A Christmas Carol* and deepen the theater's community engagement programs. Through his efforts, the theater has been awarded UPAF's Good Steward Award six times and became the only performing arts organization in Wisconsin with a 4-star rating from Charity Navigator. Previously he was the Associate Executive Director at Arena Stage in Washington, DC, where he was instrumental in opening the Mead Center for American

Theater, a 200,000 square feet, performing arts complex dedicated to American voices and playwrights. While at Arena Stage, he worked on the Broadway transfers of *Next to Normal* (Pulitzer Prize; Tony Award), *Who's Afraid of Virginia Woolf?* (Tony Award), *Wishful Drinking* starring Carrie Fisher, in addition to the world premieres of Marcus Gardley's *Every Tongue Confess* starring Phylicia Rashad and *Red Hot Patriot* starring Kathleen Turner. He has been named to Milwaukee Business Journal's Top 40 under 40 and a "Friend of the Hispanic Community" by the United Community Center. He currently serves as the President of the Milwaukee Arts Partners, Vice President of the Board of Pathways High School, Treasurer of Imagine MKE and Coordinator for Equity, Diversity & Inclusion for AFS Student Exchange Programs. Bauman is a graduate of Harvard Business School's Strategic Perspectives in Non-Profit Management program with a Master of Fine Arts in producing from the CalArts. He and his husband Justin live in Whitefish Bay.

This Winter in the Quadracci Powerhouse

Love, Laughter and 1990s Nostalgia

Much Ado

ABOUT NOTHING

Hilarious slapstick, mistaken identities, and a town full of well-meaning (but mostly ridiculous) characters lead to **sheer theatrical delight on the Quadracci Powerhouse stage.**

By **William Shakespeare** | Directed by **Laura Braza**

January 10 – February 12, 2023



www.MilwaukeeRep.com | 414-224-9490

Beats, Beehives, Blondes, Broadway, and *more* at MPAC!



THE HIP HOP NUTCRACKER - November 26, 2022 | 7:30pm

MY FAIR LADY - January 3 - 8, 2023

BROADWAY SKATES - January 20, 2023 | 4 - 8pm
(HAIRSPRAY Theme, Free Event at Red Arrow Park!)

LEGALLY BLONDE - January 24 - 26, 2023

HAIRSPRAY - February 7 - 12, 2023



SCAN ME

Buy now for Best Availability!

MARCUSCENTER.ORG | 414.273.7206 | 929 N. WATER ST

Groups of 10+ call 414.273.7207 for additional savings and service

Mark Clements
ARTISTIC DIRECTOR

Chad Bauman
EXECUTIVE DIRECTOR

ADMINISTRATION

Managing Director.....Melissa Vartanian-Mikaelian
General Manager.....Ryan Looke
Executive Assistant.....Kelli Lopina
HR Manager.....Liz Merwin
Company Manager.....Amaris Bates
Assistant General Manager.....Emily Ottinger
Receptionists.....Keywon Brownlow,
Michael Evans, Reed McLean, Mary Muehleisen

ARTISTIC

Associate Artistic Director.....Laura Braza
Artistic Producer—
Casting & Special Events.....Jonathan Hetler
Artistic Producer—
Training & Audience Engagement.....Jeffrey Mosser
Assistant Artistic Producer.....Annika Perez-Krikorian

DEVELOPMENT

Chief Development Officer.....Chuck Rozewicz
Director of Development.....Amy Dorman
Director of Major and
Planned Giving.....Alli Engelsma-Mosser
Major Gifts Officer.....Cassidy Skorija
Associate Director of Development,
Events & Stewardship.....Morgen Clarey
Associate Director of Development,
Institutional Giving.....Megan Newbanks
Development Associate.....Yolanda G. Doney
Development Database Manager.....Amy McGuire

EQUITY, DIVERSITY & INCLUSION

Chief Diversity Officer.....Jermaine Murry

EDUCATION & ENGAGEMENT

Chief Education &
Engagement Officer.....Jenny Toutant
Education & Engagement Director
of Programs.....N'Jameh Russell-Camara
Associate Director of Education.....Brittany Sue Hines
Education Coordinator.....Ro Spice-Kopischke
Education & Engagement
Administrator.....Xodia Choate
Program Coordinator—Next Narrative ^(TM)
Monologue Competition.....Jarvell Williams
Education & Engagement Resident.....Reed McLean
Teaching Artists.....Cria Ama,
Maura Atwood, Cedar Becher, Maria Beilke,
Ty'Rel Belin, La'Ketta Caldwell, Marvin Hannah,
Jacob Horstmeier, Jacob Knuth, Josh Krause,
George Lorimer, Sophie Murk, Zoe Osk, Kendrick
Pittman, Brandi Reed, Tony Roman, Alexis Smith

FINANCE

Chief Financial Officer.....Matt Leibham
Senior Accountant.....Susan Proctor
Payroll & Benefits Associate.....Cristina Hughes
Accounting Associate.....Tim Petropoulos

MAINTENANCE

Chief Building Engineer.....Chris Belcher
Engineers.....Tiffany Casey,
Jason Farris, Maurice Goodwin, Todd Ross

Center for Arts and Performance

2022-2023 SEASON



YESTERDAY AND TODAY: THE INTERACTIVE BEATLES EXPERIENCE

Friday, November 18, 2022 • 7:30 p.m.

An amazing program of Beatles music determined completely by the audience through request cards filled out prior to the show.



SILVER BELLS AND DIAMONDS

Saturday, December 10, 2022 • 2:30 p.m.

Enjoy great holiday favorites along with hit songs from the 50s, 60s, 70s, and 80s.



KO-THI DANCE COMPANY

Friday, February 3, 2023 • 7:30 p.m.

Ko-Thi Dance Company passionately preserves and performs dance and music rooted in the cultures of the African Diaspora.



ALLIANCE BRASS

Friday, March 31, 2023 • 7:30 p.m.

Alliance Brass has emerged as one of the country's most exciting ensembles.



PIANO CELEBRATIONS SERIES

Celebrate the beauty, power, and majesty of the Steinway grand piano in this series:

Barron Ryan

Saturday, February 11, 2023 • 2:30 p.m.

Anderson & Roe Piano Duo

Sunday, April 16, 2023 • 2:30 p.m.

**Center for Arts and Performance | Schwan Concert Hall
8815 W. Wisconsin Avenue, Milwaukee, Wisconsin
Box Office: 414.443.8802**

For more information, tickets, and video samples visit: wlc.edu/guestartistseries

MILWAUKEE REPERTORY THEATER BOARD OF TRUSTEES

President
Judy Hansen

Vice President, Development
Amy Croen

Vice President, Trustees
James Phelps

Treasurer
James Phillips

Secretary
Bryan House

At Large
Melanie Booth

At Large
Andres Gonzalez

At Large
Joan Lubar

At Large
Robert H. Manegold

At Large
Adam J. Peck

TRUSTEES

Ayad Akhtar
Tammy Belton-Davis
Ivor J. Benjamin, MD
Wendy W. Blumenthal
Julia Burns
Mike Carter
Jane Chernof
Marybeth Cottrill
Robert H. Duffy
John Halechko
Chris Hermann
Tom Irgens
Lynda Johnson

Michelle Kolp
David Kundert
Kris Lueders
Kerryann Minton
Dr. Jeanette Mitchell
Joseph Pickart
Karen Plunkett
Beth Ridley
Ken Robertson
Clark Slipher
Craig Swan
Deborah Tomczyk

SUSTAINING TRUSTEES

Milwaukee Rep acknowledges the remarkable support of these former Rep Trustees who continue their engagement by attending performances, contributing a generous annual gift, and/or membership in the Limelight Legacy Society.

Richard Abdo	Timothy C. Frautschi	David J. Lubar	Catherine Robinson
Joaquín Altoro	Molly Kubly Fritz	Marianne Lubar	Joseph A. Rock
Patsy Aster	Patrick Gallagher	Susan Lueger	Christopher Rowland
James Baillon	Connie Gavin	Linda Marcus	Micky Sadoff
Jay Baker	Katherine M. Gehl	Vince Martin	Joseph Schlidt
Katharine Banzhaf	Cecilia Gilbert	Patti Brash McKeithan	James Schloemer
Matt Bartel	Anne Gimbel	Venora McKinney	Thomas Scrivner
James E. Braza	Kathleen Gray	Michael McNeely	Edward Seaberg
Joyce G. Broan	William Guc	Sandra McSweeney	Brenda Skelton
Warren Buliox	Edward T. Hashek	Donna Meyer	Patrick Smith
Bladen Burns	Jacqueline Herd-Barber	Douglas Mickelson	Robert Taylor
Danny Cunningham	Peter Hotz	Dwight L. Morgan	Renee Tyson
Karen Dean	Janet Hume	Abigail J. Nash	Stephen VanderBloemen
Mark J. Diliberti	John Hunzinger, P.E.	Mark Niedfeldt, M.D.	W. Kent Velde
George A. Dionisopoulos	Stephen Isaacson	Gregory C. Oberland	Nicholas Wahl
Robert Dye	Judy Jorgensen	Tonen (Sara) O'Connor	Karin Werner
Norman Dyer	J. Patrick Keyes	Gina Peter	Stacy Williams
Stephen Einhorn	John Kordsmeier	Anthony Petullo	Andrew Ziegler
James D. Ericson	Frank Krejci	Elizabeth Quadracci-Harned	
Susan Esslinger	James LaVelle	Kristine Rappé	
Robert Feitler	Phoebe Lewis	Dr. John E. Ridley	

PRESIDENTS' COUNCIL

James E. Braza	Larry Jost	Robert H. Manegold	Gregory C. Oberland
Joyce Broan	John L. Kordsmeier	Vincent L. Martin	Edward Seaberg
Judy Hansen	Frank Krejci	Patricia Brash McKeithan	W. Kent Velde
Jacqueline Herd-Barber	Susan A. Lueger	Donna Meyer	

LIMELIGHT LEGACY SOCIETY MEMBERS

The Limelight Legacy Society is a group of visionary donors who support Milwaukee Rep through a planned gift.

New members as of May 1, 2022 are in bold.

To learn more about membership opportunities and benefits, please contact

Alli Engelsma-Mosser at 414-290-5366 or Aengelsma-mosser@milwaukeekeerep.com.

George R. Affeldt, Jr.	Carol Z. Dolphin	Lois and William Hoover	Dr. Thomas Raimann
Sharee Allain and David Schertz	Amy Dorman	Dr. Lawrence Howards	and Mick Dwyer
Richard and Sara Aster	Dr. Eric Durant and Scott Swickard	Janet Kellogg Hume	David and Pat Rierson
Gerald and Gail Baccetti	Rosemarie Eierman	Cathryn Kacic	Sara Risley
Bob Balderson	Roma Eisman	Deb and Peter Johnson	Gayle Rosemann
John and Carol Bannen	Don Ellingsen	Bradley J. Kalscheur	and Paul McElwee
Katharine Banzhaf	Susan and Gee Esslinger	Richard and Diane Kane	Patricia A. Santilli
Brian and Rebekah Barsch	Janet Fleck	Margaret Knitter	James and Kathleen Scholler
Adam and Megan Bauman	James and Ellen Flesch	Christine Krause	Ed Seaberg and Patrick Smith
Chad Bauman and Justin Dunleavy	Deborah Fugenschuh	Diana Kuehl	Brenda Skelton and Jim Bendtsen
Mark and Victoria Benskin	and Mark Hinchey	David Kundert	Aileen M. Smith
Bill Beyer	Rob Gardner	Sandra L. Laedtke	Amanda Springob
Mark Biehl	and Lori Morse Gardenier	James and Mary LaVelle	Terry R. Sutter
Melita Biese	Bill and Susanne Gay	Mr. and Mrs. Lewellyn E. Licht	John and Kine Torinus
Joyce G. Broan	Jeff Glock and Jane Reilly	Robert and Susan Lueger	Harry and Mary Beth Van Groll
Mark E. Carstensen	Kathleen Gray and Ron Hofer	Carol and Rob Manegold	Judy Van Till
and Mary M. Horton	Sara L. Grotenrath and James Pech	Tom and Renee McCutcheon	Paul Vandeveld
Jane and Stephen Chernof	Delphine Gurzynski	Jim and Sally Mergener	Kent and Marcia Velde
Mark Clements	Richard and Susan Hackl	Anthony and Donna Meyer	Carla and Greg Von Roenn
and Kelley Faulkner	Syblie Hamilton	Vivian Moller	Greg and Jodi Wait
Chris and Judi Collins	Arlene Hansen	Bob and Jan Montgomery	David and Cheryl Walker
Diane Dalton	Judy Hansen	Charles and Barbara Murphy	Neal and Cathy Wegner
Randall Daut and Patricia Ryan	Leland Hansen	Greg and Rhonda Oberland	Sue Wells
Susan and Bill Dawicke	John and Susan Harrits	Karen E. Owens	Barbara Wesener
Robert and Karen Dean	Edward Hashek and John Jors	Mariylene Pfeiffer	Stacy and Blair Williams
H. Robert Dittmer	Thomas and Catherine Heinen	Ronald and Barbara Poe	Paul and Sandy Wysocki

The following list represents organizations and individuals who have made a cumulative contribution of \$500 or more between July 30, 2021 and September 30, 2022. For a complete list of all our supporters, please visit www.MilwaukeeRep.com.

Corporation, Foundation and Government Giving

\$1 million +

Associated Bank
Herzfeld Foundation
United Performing Arts Fund (UPAF)

\$100,000 – \$999,999

The Lynde and Harry Bradley Foundation
National Endowment for the Arts
Northwestern Mutual
Shubert Foundation
We Energies Foundation

\$50,000 – \$99,999

BMO
PNC
Rockwell Automation
Wells Fargo
West Bend Mutual Insurance Company

\$25,000 – \$49,999

Arts Midwest
Bader Philanthropies
Patty and Jay Baker Foundation
CAMPAC
Ralph Evinrude Foundation
Greater Milwaukee Foundation
Johnson Controls
Reinhart Boerner Van Deuren S.C.
Saint John's on the Lake
Studio Gear

\$10,000 – \$24,999

Baird
Demmer Charitable Trust
Eppstein Uhen Architects
Fiduciary Management
Godfrey & Kahn, S.C.
William N. and Janice V. Godfrey Family Foundation
Frieda & William Hunt Memorial Trust
InterPark Milwaukee Center
The Marcus Corporation
National LGBT Chamber of Commerce
Jane Bradley Pettit Foundation
PricewaterhouseCoopers
RDK Foundation
Wisconsin Arts Board

\$1,000 – \$9,999

Adient
American Family Insurance
ANON Charitable Trust
Brewers Community Foundation
Burke Properties
CG Schmidt, Inc.
Deloitte
Einhorn Family Foundation

Foley & Lardner
Froedtert Health
GRAEF
Green Bay Packers Foundation
Evan and Marion Helfaer Foundation
Hunzinger Construction Company
Husch Blackwell
Dorothy Inbusch Foundation
MGIC Investment Corporation
Michael Best & Friedrich
Michels Corporation
Milwaukee Arts Board
Molson Coors
Charles D. Ortgiesen Foundation
Potawatomi Hotel & Casino
Quarles & Brady
Riverwater Partners LLC
Spear Arts Education Fund
Townsend Foundation
U.S. Bank
The Walbec Group
Willis Towers Watson
Wimmer Brothers Realty
Windsor Advisory Group, LLC

\$500-\$999

Actors' Equity Foundation, Inc.
Greater Milwaukee Association of Realtors Youth Foundation
Camille A. Lonstorf Trust

Participants in the Matching Gift Program

Abbvie
American Family Insurance Dreams Foundation
Baird
Caterpillar Foundation
Eaton Corporation
GE Foundation
Greater Milwaukee Foundation
Bucyrus Foundation, Inc.
Husch Blackwell
Johnson Controls Foundation
Leonardo Drs PAC Charity Match Program
Merck Partnership For Giving
Microsoft Corporation
Netapp
PNC
Principal Financial Group
Progressive Insurance Foundation
Reader's Digest Foundation
Rockwell International Corp. Trust Matching Gift Program
We Energies Foundation
Wells Fargo
Zurn Water Solutions

Milwaukee Rep welcomes gifts of securities and stocks. If you plan to make such a gift, please notify the Development Department at 414-290-0717 so we can properly credit and acknowledge your generosity.

Individual Giving

Luminary (\$100,000+)

Anonymous (2)
Melanie and Steve Booth
Elaine Burke
Greater Milwaukee Foundation
Judith A. Keyes Family Fund
Lubar Family Foundation
Sheldon and Marianne Lubar
David and Madeleine Lubar
Joan Lubar and John Crouch
Susan Lubar
Vince Martin
Greg and Rhonda Oberland
Jim Phillips
Clark and Diane Slipher
David and Julia Uihlein

Visionary (\$50,000-\$99,999)

Anonymous
Bladen and Julia Burns
Robert C. Burrell
Tom and Molly Duffey
Four-Four Foundation
Greater Milwaukee Foundation
Tony and Andrea Bryant
David Kundert
Kristine and Wayne Lueders
Sally Manegold
Anthony Petullo Foundation
Ed Seaberg and Patrick Smith
Thomas and Iphigenia Smith
A.J. Star and Mark Clausen
Craig and Mara Swan
David and Cheryl Walker

Artistic Producer (\$25,000-\$49,999)

Anonymous (2)
Richard and Sara Aster
James Awe
Jo Ann and Richard Beightol
Karen and Mark Bitzan
Bradley Impact Fund
Jason and Diep Graham Charitable Fund
Cheri and Tom Briscoe
Dr. Eric Durant and Scott Swickard
Robert and Joan Feitler
Janet Fleck
Greater Milwaukee Foundation
Flesch Family Fund
Sandra and William Haack
Christopher Harned and
Elizabeth Quadracci-Harned
Carla H. Hay
Bryan and Rebecca House
Keyes Family
Patti McKeithan
Chris and Anne Noyes
Tom and Susan Quadracci
Christine Symchych and Jim McNulty
Kate and Don Wilson

Producer (\$10,000-\$24,999)

Anonymous (3)
Fran Adams

Bob Balderson
Donna and Donald Baumgartner
Ivor and Carol Benjamin
Croen Foundation, Inc.
Patrick and Rachel English
Suzy B. Ettinger Foundation
Peter Foote and Robin Wilson
The Molly and David Fritz Family
Greater Milwaukee Foundation
Norman and Lucy Cohn Family Fund
Kevin and Roseann Lyons Fund
John J. Halechko and Marc Colletti
Judy Hansen
John and Susan Harrits
Christopher and Katherine Hermann
Mark and Sue Irgens
Judy and Gary Jorgensen
Krista Kile
Dennis and Cheryl Konkol
Mark and Jenny Kopetsky
Billie W. Kubly
Phoebe Lewis
Dawne and Ray Manista
Linda and Debesh Mazumdar
Tom and Renee McCutcheon
David and Abigail Nash
Diane K. O'Connor
Peck Foundation, Milwaukee LTD.
Gina and Eric Peter
Bill Priebe
Augustin and Rebecca Ramirez
Catherine and Buddy Robinson
Saints Andrew and Mark Charitable Gift Trust
Meredith and Thomas Scrivner
Kathleen H. Seidel
Jeffrey P. Sommerfeld and Dr. Lori Sommerfeld
Harry and Mary Beth Van Groll
Melanie and Brian Wolf
Ziegler Family Foundation

Jane and Steve Chernof
Jeff and Sarah Joerres
Lynda Johnson
Mike and Marie Johnson
Connie and John Kordsmeier
Susan and Tony Krausen
Jean and David Lauer
John Mathie
Maureen McCabe
John and Linda Mellows
Patricia and William Moren
Drs. Mark and Jennifer Niefeldt
Joe and Katie Pickart
Drs. Alan L. Pohl and Carol C. Pohl
Dr. Thomas Raimann and Mick Dwyer
David and Pat Riersen
Gayle Rosemann and Paul McElwee
Linda L. Sell, MD
Jan Serr and John Shannon
Paul and Kathy Slesar
Jud and Amy Snyder
Kent and Marcia Velde
Nic and Sally Wahl

Designer (\$2,500-\$4,999)

Anonymous (2)
Helen Ambuel
Abby and Omar Andrietsch
Lisa and Souheil Badran
Gary and Connie Bakker
Katharine Banzhaf
William and Barbara Boles
Robert and Sharon Brenner
Bradley and Glenna Brin
Randal and Mary Lynn Brotherhood
Peter and Bobbie Buening
Dr. Bruce and Marsha Camitta
John and Kathleen Cantieri
Timothy and Kathleen Carr
Jim Cauley and Brenda Andrews
Jim and Marybeth Cottrell
Sue and Curt Culver
Lloyd and Tammy Davis
Antony and Nikki D'Cruz
Larry and Eileen Dean
Margaret Dethloff and Terri Zeh
Bob and Teri Duffy
Bill and Susanne Gay
Jack Gebhardt and
Deborah McKeithan-Gebhardt
Tim and Sandy Gerend
Delphine Gurzynski
Paul and Gloria Halverson
Leland Hansen
Katherine L. Hauser
Henry and Margery Howard
Steve and Karen Huser
Jewish Community Foundation
Micaela Levine and Tom St. John
Donor Advised Fund
Maja Jurisic and Don Fraker
Tim Kraetsch and Mike Wavra
Christine Krause
Kristine Krause and Scott Patulski

Director (\$5,000-\$9,999)

Anonymous (5)
James and Susan Baillon
Wendy and Warren Blumenthal
James E. and Mary K. Braza
Frank and Caryl Briscoe
Chris and Judi Collins
Sue D'Alessio
Robert and Karen Dean
Thomas J. and Deborah W. Degnan
Sandy and George Dionisopoulos
Greater Milwaukee Foundation
Joan and Peter W. Bruce Fund
Rob Gardenier and Lori Morse Gardenier
Charitable Fund
Howard and Susan Hopwood Fund
Donna and Tony Meyer Fund
Richard Grunke and William Grash
Thomas and Katherine Hauske
Katie Heil
Henry and Suzanne Herzing
Ken and Janet Howenstine
John and Marci Hunzinger
Jewish Community Foundation

Marina and Frank Krejci
 Sandy Laedtke
 Franklin Loo and Sally Long
 Elaine and Gerry Mainman
 Michael and Jane Malone
 Merle and Sandra McDonald
 Jim and Sally Mergener
 Ann Bartos Merkow and Steve Merkow
 Vivian Moller
 Dwight and Marleen Morgan
 Marlene Ott
 James and Morgan Phelps
 Fred Pike and Cecilia Taylor
 Jonas and Sylvia Prising
 Cathy Procton
 Jim and Lys Reiskytl
 Pat Rieselbach
 Ron and Micky Sadoff
 Jay and Anne Schamberg
 Rick and Jean Schmalfeld
 Peggy Schneider
 Richard and Mary Schnell
 Sue and Bud Selig
 Dennis P. Sheahan
 John and Karen Silseth
 Dr. Mark and Nancy Smuckler
 Susan and Jim Taylor
 John and Anne Thomas
 Paul Wanat
 Neal and Cathy Wegner
 Eric and Sarah Whyte
 Wilfred Wollner
 Paul and Katherine Zavada

Playwright (\$1,000-\$2,499)

Anonymous (14)
 Sharee Allain and David Schertz
 Amy L. Argall
 Astor Street Foundation
 Kevin and Jean Ball
 George Banda
 Michael Barber and Jacqueline Herd-Barber
 Kathleen and Robert Bardunias
 Richard and Diana Barthel
 Carla and Burt Bartlett
 Chad Bauman and Justin Dunleavy
 Jackie Behnke
 Art Blair
 Cristin and Jonathan Bock
 Ginny Bolger
 Douglas and Barbara Braun
 Caridad Bravo-Fernandez
 Edward and Liana Braza
 Timothy Brennan
 Warren and Tina Buliox
 Allison and Dan Byrne
 Bruce and Kathi Campbell
 B. Lauren and Margaret Charous
 Steve and Nancy Check
 Thomas and Gisela Chelimsky
 Mark and Terri Chelmowski
 Kathryn and Kelly Clark
 Nathan and Beth Colson
 Mary and James M. Connelly
 Craig and Jeanette Cook
 Rev. David E. Cooper
 Cream City Foundation
 Valentine Fund
 Jolinda and Danny Cunningham
 Frank Dailly and Julianna Ebert
 Tom DeChant and Paul Gibler
 Lloyd Dickinson and Kristin Bergstrom

H. Dittmer and Jon Pansky
 Carol Z. Dolphin
 Donna Drosner
 Mary Ann Dude
 Michael and Janet Durham
 Richard and Patricia Ehrlert
 Tina Eickermann
 Dale and Mary Erickson
 Susan and Gee Esslinger
 Mary Lou M. Findley
 Moira Fitzgerald and Peter Kammer
 Jeff and Kelly Fitzsimmons
 Tom and Marcia Flanagan
 Frederick the Great
 Patrick D. Gallagher
 Gigi and Ivan Gamboa
 Rick and Liz Gebhardt
 Rod and Linda Gehrig
 Andres and Jessica Gonzalez
 Kathleen Gray and Ron Hofer
 Greater Milwaukee Foundation
 Bechthold Family Fund
 Bernadine and Stephen Graff Fund
 Nancy E. Hack Fund
 Margaret Heminway Wells Fund
 Hepburn "Bootstrap" Foundation
 JB Fund
 David and Marion Meissner
 Nile and Carol Soik Family Fund
 Thomas and Mary Grossman
 Calli and Thomas Guay
 Glen and Claire Hackmann
 Elizabeth Hancock and Susan Nevala
 Thomas Harty and Sharon Stafford Harty
 Margaret and David Harvey
 Edward Hashek and John Jors
 Kathleen Hawkins and Charles Marn
 Laurie Hazzard
 John and Jean Henderson
 Jerold Hershberger
 Genene and Sanaiah Hibbler
 Debra and Kevin Hood
 Hal Horneffer
 Peter and Linda Hotz
 Diana and James Hughes
 Stephen and Roberta Isaacson
 Ronald E. Jacquart
 Jewish Community Foundation
 Raye David
 Debra and Peter Johnson
 Carol Jones
 Maureen Kania Swokowski
 Mark and Ginny Kannenberg
 Dr. Jack and Myrna Kaufman
 Patti Keating Kahn and Chuck Kahn
 Peggy and Mike Kelsey
 Jennifer and Michael Keough
 Jim Vollmer and Diane Kippenhan-Vollmer
 John and Debbie Kissinger
 Glenn Kleiman and Gisela Terner
 John and Bronwen Knappenberger
 Margaret Knight
 Robert and Naomi Knoll
 Don and Barb Koehler
 Lilane Koehn Mace
 Paul and Amy Kolo
 Ashley and Andy Koors
 Robert and Gail Korb
 Steven and Janne Koritzinsky
 Kenneth Krei
 John and Victoria Laur
 William Leach and Willie and Jason

Missy and William Levit
 Rita Lewenauer
 Steven Liszewski
 Rick and Roberta London
 Robert and Susan Lueger
 Duane and Kay Maas
 Thomas and Judith Mackenzie
 Andy and Janet Martin
 Dr. Brent and Susan Martin
 Daniel and Constance McCarty
 Katherine McCombe
 Victoria S. McCormick
 Ann and Robert McIntyre
 Julie and David Meier
 George and Sallie Meyer
 Jill Meyers
 Judith Miller
 Gregory and Susan Milleville
 Anthony Mlinar
 Carol Moerke
 Erik and Carol Moeser
 Claudia and Joseph Moll
 Bob and Jan Montgomery
 Sarah Oberhofer
 Laurie Ocepok
 Alan and Kathy Olsen
 Dr. David Paris
 Marlyene Pfeiffer
 Matthew and Laurie Piette
 Earl Potter and Lani Williams
 Sylvia K. Pratt
 Susan Purtell
 Robert Purtock
 Phil and Lynell Raiche
 Jim Ramsey
 David and Roberta Remstad
 Beth Ridley and Abim Kolawole
 Carol Riegert
 Lynn Rix
 Daniel and Anna Robbins
 Richard and Karen Rodgers
 Andrew Ruehl
 Wayne and Christine Sage
 Jim and Andrea Schloemer
 Judy and Tom Schmid
 Patrick W. Schmidt and Dewey J. Caton
 Aileen M. Smith
 Andrew and Lauri Srok
 Scott and Mary Ellen Stanek
 Charles and Jennifer Stearns
 Judith A. Steinke
 Linda and Richard Stevens
 Robert Storm and Catherine Shaw
 The Streich Family Foundation
 David and Paula Strelitz
 Dr. Cheryl Stucky and Dr. Jeffrey Waring
 Kristyn Harrell and Michael Stull
 Jane Svinicki
 James and Elaine Sweet
 La Toya Sykes
 Colette Szczesny
 Rich and Jean Tennesen
 Gile and Linda Tojek
 Curtis and Deborah Tomczyk
 Keri Torgerson
 Lisa Trost
 Mike Uihlein
 Christine M. and Stephen C. VanderBloemen
 Teresa Velk
 Ryan Vincent and Bekah Newman
 Elizabeth Vokac
 Carla and Greg Von Roenn

Robert and Kathleen Warner
Ruth A. Way
Dr. and Mrs. Paul Weisman
Sue Wells
Susan Wiegner
Howard and Mernie Williams
Connie Wilson and Mike Krueger
Prati and Norm Wojtal
Lee Wolcott
Pete and Penny Woodcock
Daryl and Bonnie Wunrow
Joe and Mary Ann Zompa

Principal Actor (\$500-\$999)

Anonymous (12)
Mary Ellen Acker
John Alexander
Shawn Alexander
Jim and Terri Alioto
Dorothy Anderson
Elma Anderson
Kathleen and Robert Anger
Cheryl Banks
Barb Anderson Fan Club
Lynn and Charles Barney
Brian and Rebekah Barsch
Tom and Sally Basting
Charles Baumgardner and Susan Jans
Melissa and James Baxter
Jack and Virginia Beatty
Lucien and Holly Beaudry
Donald Becker
Diane and Thomas Belot
Evert and Cindy Berndt
Carolee Beutler
Greg Bird
Margaret Blodgett and Ken Miller
Edward and Amy Blumenthal
Danielle and Ramel Bly
James Boerner
Mike and Mary Bohren
Darold and Cheryl Borree
Paul Bosanac
Steven Bowsher
Joel and Audra Brennan
Kristin Brey and Michael Sampson
Jill Broekhuizen
Anne and Arthur Brooks
D'Araun Brown
Chris Burgener and Linda Loke
Carole Burns
Mark and Penny Burrall
Bruce and Joan Butterfield
Peter and Laurie Byrne
David Cadle
Anne and Phil Callen
Christopher and Kristine Cameron
Bob Campbell
Brian Casey
Susan Cerletty
Gregory Chandler
Walt and Aleta Chossek
Joseph and Julie Chusid
Lana and Rick Colbo
Gerry and Heidi Connolly
Nicole and Jack Cook
Suzanne and Don Cornell
Cathy and Mario Costantini
Anne Courtney
Matt Cudney
Russell and Susan Darrow
Mary Paula Dix

Doug Doers
Ellen Drought
Sue and Dennis Duellman
Henry Duffrin
Patrick and Mary Duffy
Marie Dupuis and Peter Westergard
Mike and Kathy Dwyer
Nancy Ellis
Nelson Ellis
Evelyn Ericson
Patti Farrell and Randy Gschwind
Ashley Faulkner
Christine L. Fenner
James and Susan Fergus
Kari and Bill Foote
Kathy Ford
Patrick and Linda Ford
Helen Forster
Linda Frank
Alec and Kristin Fraser
Pamela Frautschi
Ronald Froehlich
Richard Gallagher
Drs. Mark and Virginia Gennis
Tony and Mary Gentine
Thomas and Beth Giese
Emma Gillette
Jon and Nancy Gilmore
Jeff Glock and Jane Reilly
Lawrence and Hannah Goodman
Christine Gould
Barbara Grande
Greater Milwaukee Foundation
Sherry and Norm Malmon
Philanthropic Fund
Michael and Joanne Grebner
Mitchel Griep
David and Dana Griffith
Honorable Michael and Barbara Guolee
Carol Gustafson
Jackie Hallberg
Arlene Hansen
Dr. James and Mary Ann Hanson
Amy Harker-Murray
Christopher Harroun
Cliff and Susan Hartmann
Marge Hartwig
John Healy and Mary L. Tobin
Fred and Carol Heim
Jeffrey and Heather Hein
Ralph and Bonnie Hensel
Drs. Daniel and Nancy Herrell
Mary Beth Holloway
Gary Holmes and Susan Holding
Lois and William Hoover
Dante and Jennifer Houston
RC and Heather Huhn
Roy H. Jablonka
Valerie Jablonka
Deane and Vicky Jaeger
A. W. Janikowsky
Nancy Jesse
Jewish Community Foundation
Pam Kriger Donor Advised Fund
Sherwood E. and Libby S. Temkin
Donor Advised Fund
Ashley and Lewis Johnson
Mary Johnson
Evan and Paula Kaiser
Charles and Mary Kamps
Richard and Diane Kane
Melissa Kanios

Tom Karakis and Colleen Lese
Brian and Mary Lou Kennedy
Thomas and Susan Kotur
Terry and Mary Krall
Bruce Lammi
Dan and Kathy Larsen
Michael Lee
Lloyd and Sheri Levin
Mark and Cynthia Levy
John E. and Karen M. Lewis
Judie Liebenstein and Kelly Fowler
Perry Lieuallen and Darcy McManus
David and Mary Ann Lillich
Nancy Lindenbergh
Dawn Lindsey
Saskia Lodder
Patricia Lombardo
Adrian Love
Paul and Patty Lucca
James and Paula Lukas
Glen and Sally Lunde
Robert Madden
Benjamin and Ellen Mandelman
Diane and Eugene Markiewicz
Stephen Marks
Robert Marold and Diane Boldt
Thomas Marshall
Joseph Masterson
Frank and Kathy Mattaino
Michelle and Matt Mattson
Jean Maurer
Dan and Ada McAdams
Bernard and Susan McCartan
William and Pauline McCown
Dan and Jill McElroy
Jere McGaffey
Bonnie McKendry
Thomas and Cynthia McLinn
Barbara McMath
James and Diane Meinecke
Kristen Mekemson
Daryl and Rita Melzer
Diana and Mark Metz
Howard and Sara Miller
Kelly Mischler
Rebecca and Jason Mitich
Matt and Christina Moore
Christine Mortensen
Chris and Betsy Mueller
Mary Ann Mueller
Barbara and Charles Murphy
Lori and Jerry Murphy
Sue Nelsen
John and Margaret Nelson
John and Jane Niebler
Paul and Kathrine Noran
Susan and William Ognacevic
Eric Oquist and Heather Deaton
Pasta Tree Restaurant and Wine Bar
Kristine Phillips
Bruce and Candy Pindyck
J. D. and Sally Polley
Carol Porth
Sarah J. Pratt, M.D.
Lisa Przelbski
David Putnam
Ronald and Anne Putzer
Steven and Stacey Radke
Jim and Kris Rappé
Patrick Rath and Tracy Szymanski
Anthony Reese
Suzann Reichley

John and Page Remmers
Nancy and Herman Resto
Thomas and Lynn Richtman
Jackie Rickel
Craig Rigby and Anna Timms
Mickey and L. Casey Ripp
RitzHolman CPAs
Robert Rooney
Linda Sampson
James Sanger and Mary Newton
Mike and Jan Schade
The Wilbert and Genevieve
Schauer Foundation
Eric Schluter
Bob and Carol Schmidt
James and Kathi Scholler
George Schroeder and Mary Arenberg
William and Judith Schuele
Dean Schultz
Robert Schweers
Martha and Frank Scott
Allison Scrivner and Kevin Baumgart
Vicki Shimi
Emily and John Shipman
Scott and Dulcie Shoener

Mark and Bonnie Siegel
Kim Sienko
David and Angela Simon
Michelle Sirinek
Jason and Andrya Smith
Sarah Smith-McEneaney and Robert Smith
Margaret Sohm
Carlton D. Stansbury
Alec Stapleton
Kendra Stea
Daniel Stier and Diane Sorensen
George and Eileen Stone
Richard and Susan Strait
Lynn and Gregory Strowig
Dave and Kathy Sturgill
Geoffrey Swain
Jenifer and Joseph Tate
Kent and Marna Tess-Mattner
Grant and Diane Tews
Steve Thompson and Sue Kleczewski
James and Leigh Ann Tidey
Sara Toenes
Michele Tschopp
Sheryl A. Van Haren
Dave and Katy Vetta

Randall and Gillian Vodnik
Nancy Vose
Greg and Jodi Wait
Nancy Blanchard Watts
Kim and Rodney Weekley
Mary M. Wegener
Mark and Anne Weitenbeck
Alan and Kathy Werth
Barbara Wesener
Stephanie Wesselowski
Alberta Whitaker
Sandra Wiegand
Tom and Marlys Williams
Robert and Linda Wilson
William and Anne Wingate
Zac and Sara Wolff
Diana Wood
Nancy and Mike Yttre
Mark and Evonne Zalewski
Gertrude Zauner
Joan M. Zeiger
Sharon Ziegler
Andi and Mike Zimmerman
Eve Joan Zucker
Doug and Marilyn Zwissler

WHAT YOU CAN DO WHEN YOU DONATE TO MILWAUKEE REP

INSPIRE MILWAUKEE STUDENTS

Each year, we help more than 20,000 middle and high school students experience live theater for the first time.

SUSTAIN ARTISTS AND STAFF

A production is only as good as the people who create the costumes, build the sets, and bring each character to life onstage.

NURTURE EMERGING PROFESSIONALS

The future of Milwaukee Rep, and the greater Milwaukee theater community, rests in our ability to train the next generation of talented actors, directors, and technicians.

EMPOWER THE COMMUNITY

We create community programming that brings people together and serves as catalysts for conversations around Milwaukee's most pressing issues.

YOUR SUPPORT + OUR WORK = **SERIOUS IMPACT**

Donate online at **www.MilwaukeeRep.com** or call **414-290-5376**



And the
NEXT CHAPTER
begins...

EXPLORE THE ST. CAMILLUS
LIFESTYLE TODAY!

To visit our beautiful
Independent Living Residences,
call **414.639.4213**.


A Life Plan Community



UNITEDPERFORMINGARTSFUND



UPAF IS FOR THE PERFORMING ARTS that you are here to enjoy today. We're for thousands of local artists in the spotlight and behind the scenes. We're for you — the audience — rediscovering excitement, inspiration and connection. We're for Milwaukee, Tosa, Waukesha, Racine & beyond. We're for being together, surrounded by the magic of music, dance, song and theater.

We're for raising our community up.

You're for the arts too, so please join us to ensure that our world-class performing arts groups make a full recovery.

► DONATE TODAY. UPAF.ORG/DONATE

MUSIC | DANCE | SONG | THEATER



OYSTER PERPETUAL SUBMARINER DATE



TREIBER & STRAUB
JEWELERS

14740 W. Capitol Dr. Brookfield, WI 53005
(262) 790-5757

ROLEX ® OYSTER PERPETUAL AND SUBMARINER ARE ® TRADEMARKS.