



SEPTEMBER 17 – OCTOBER 27
QUADRACCI POWERHOUSE

Presented by The Plunkett Family Foundation

WEST SIDE STORY

Based on a conception of **Jerome Robbins**

Book by **Arthur Laurents**

Music by **Leonard Bernstein**

Lyrics by **Stephen Sondheim**

Directed by **Mark Clements**

Sponsored by

BMO



Liesl Collazo and Jeffrey Kringer. Photo by Todd Rosenberg Photography.



FOOTLIGHTS.COM[®]

MILWAUKEE REPERTORY THEATER



Milwaukee Rep is the largest performing arts organization in Wisconsin in terms of audiences served and one of the largest professional theaters in the country. For over 65 years, Milwaukee Rep has gained a national reputation as an incubator of new work, an agent of community change and a forward-thinking provider of vital arts education programs.

Each year, Milwaukee Rep welcomes up to 275,000 people at nearly 700 performances of 15 productions ranging from compelling dramas, powerful classics, new plays and full-scale musicals in its three unique performance venues – the Quadracci Powerhouse (720 seats), Stiemke Studio (205 seats) and Stackner Cabaret (186 seats).

Under the leadership of **Artistic Director Mark Clements** and **Executive Director Chad Bauman**, Milwaukee Rep ignites positive change in the cultural, social, and economic vitality of its community by creating world-class theater experiences that entertain, provoke, and inspire meaningful dialogue among an audience representative of Milwaukee's rich diversity.



Mark Clements
Artistic Director



Chad Bauman
Executive Director

THE REP | PATRON SERVICES

Contact Info

Ticket Office

Phone Number: 414-224-9490

Fax Number: 414-225-5490

Mailing Address: Milwaukee Repertory Theater
Patty & Jay Baker Theater Complex
108 E. Wells Street; Milwaukee, WI 53202

E-mail: tickets@MilwaukeeRep.com

Hours of Operation:

Monday – Sunday Noon to 6 pm

On days with performances, the Ticket Office will remain open until show time.

Administrative Office

Phone Number: 414-224-1761

Fax Number: 414-224-9097

Mailing Address: Milwaukee Repertory Theater
Patty & Jay Baker Theater Complex
108 E. Wells Street; Milwaukee, WI 53202

Hours of Operation:

Monday – Friday 8:30 am to 5:30 pm

Emergency Phone Number

If you anticipate the need to be reached during a performance, leave your name and seat location with your contact information, along with instructions, to direct emergency phone calls to the House Manager at **414-290-5379** or **414-224-1761, ext. 379**.

Cellular Phones/Electronic Paging Devices

Please remember to turn off your cell phones and electronic paging devices.

In case of an emergency, these items may be left with the House Manager.

Also, as a courtesy to your fellow theatergoers and the actors on stage, please refrain from text messaging during the performance. Thank you!

MILWAUKEE REP EXPERIENCE

Concessions

Enjoy a drink or dessert in the Quadracci Powerhouse or Stiemke Studio lobby prior to the performance or at intermission. Please remember that food and drink (except bottled water and Rep sippy cups), are not allowed in the theater.

Gift Shop

Located in the Quadracci Powerhouse is The Rep's Gift Shop, which offers show-specific merchandise and Rep logo products, as well as books and scripts of current and past productions. You can also purchase parking passes.

Rep-in-Depth

Get an insider's look at the play from a member of the cast or artistic team with a discussion that begins approximately 45 minutes prior to every performance in the Quadracci Powerhouse and Stiemke Studio.

Rep TalkBacks

After select performances, engage in a deeper conversation with members of the cast, artistic team and occasional special guests. Get TalkBack schedules by calling the Ticket Office at **414-224-9490**, online at www.MilwaukeeRep.com.

SERVICES

Access



Deaf or Hard of Hearing Services: The Quadracci Powerhouse (QP) and the Stiemke Studio are equipped with an **infrared listening system** which ensures clarity of sound from any seat in the house. Performances are offered in **American Sign Language** for a Thursday evening of all QP productions and one Sunday matinee for all Stiemke Studio productions. We also offer a **Captioned Theater** performance during the second to last Sunday matinee performance of all QP productions. Please call The Rep Ticket Office at **414-224-9490** for more information. **Script synopses** are available upon request for QP and Stiemke Studio productions by calling **414-224-1761**.

Blind or Low Vision Services: Large print programs are available in the Quadracci Powerhouse and Stiemke Studio from any usher. Every Rep production has one **audio-described performance**. Using an earpiece attached to a small hand-held receiver, patrons hear a live, real-time description of the action on stage. Call the Ticket Office for more information.

Wheelchairs All Rep stages are fully accessible. Please contact the Ticket Office at **414-224-9490**.

Late Arrivals

Out of courtesy to the actors and audience, patrons arriving after the performance has started will be seated at the discretion of House Management.

Parking

Milwaukee Center offers onsite parking with indoor access to The Rep operated by InterPark. Enter from Kilbourn Avenue or Water Street.

Policy on Children

Children under age seven are not admitted in the theater.

Recording Equipment and Cameras

The use of recording equipment and cameras in the theater is strictly forbidden.

MILWAUKEE REPERTORY THEATER

#AChristmasCarolMKE @milwrep

NOV. 26 – DEC. 24, 2019 | PABST THEATER

JAY FRANKE AND DAVID HERRO PRESENT

A CHRISTMAS CAROL

A Novel by **Charles Dickens**
Adapted & Directed by **Mark Clements** AT **The Pabst**

Milwaukee's Holiday Tradition!

This tale of love, hope and redemption is a dazzling Christmas feast with enough theatrical goodies to fill any sized stocking. Join Bob Cratchit, Tiny Tim and Scrooge in a holiday classic the whole family will love.

PRESENTED BY



Associate Producers: **Gretta Assaly; Molly & Tom Duffey**

Sponsored in part by: Equipment Sponsor: Media Sponsor:



www.MilwaukeeRep.com | 414-224-9490

Consider this
a **standing**
ovation.



BMO Harris Bank is honored to help bring the arts to venues throughout Milwaukee.

We proudly support the artistic works of **Milwaukee Rep.**

Mark Clements
Artistic Director



Chad Bauman
Executive Director

The Plunkett Family Foundation proudly presents

WEST SIDE STORY

Based on a Conception of Jerome Robbins

Book by Arthur Laurents

Music by Leonard Bernstein

Lyrics by Stephen Sondheim

Entire Original Production Directed and
Choreographed by Jerome Robbins

Originally Produced on Broadway by Robert E. Griffith and Harold S. Prince
By Arrangement with Roger L. Stevens

Directed by
Mark Clements ♦

Choreography by
Jon Rua ♦

Music Direction by
Dan Kazemi ±

Scenic Designer
Todd Edward Ivins ±

Costume Designer
Alexander B. Tecoma

Lighting Designer
Yael Lubetzky

Co-Sound Designer
Daniel Erdberg

Co-Sound Designer
Megan B. Henninger

Music Supervisor
John Tanner ±

Fight Choreographer
Chuck Coyl ♦

Voice & Text Director
Micha Espinosa

Casting Director
Frank Honts

New York Casting
Dale Brown Casting

Stage Manager
Tara Kelly*


September 17 – October 27, 2019
Quadracci Powerhouse

Sponsored by **BMO** 

Executive Producers
Jo Ann & Richard Beightol, Four-Four Foundation, Inc., Gina & Eric Peter

Associate Producer
Suzy B. Ettinger Foundation

Additional Support Provided by 

Sponsored in part by 
UNITED PROFESSIONAL ARTISTS FUND

West Side Story is presented through special arrangement with Music Theatre International (MTI).
All authorized performance materials are also supplied by MTI. www.MTIShows.com

♦ A member of Stage Directors and Choreographers Society, an independent national labor union.

± Milwaukee Repertory Theater Associate Artists

* Member of Actors' Equity Association, the Union of Professional Actors and Stage Managers in the United States.

WE HAVE YOU COVERED: PRE-SHOW DINING TO POST-SHOW DRINKS



An all-day café serving American cuisine made simply, with great ingredients. Like your mom's cooking, but better.

ARIA



A fast-casual Neapolitan style pizza joint that balances old-world character and modern design.



Have a laugh at Milwaukee's only
champagne bar



GIGGLY

SAINT KATE — THE ARTS HOTEL

139 EAST KILBOURN AVENUE — DOWNTOWN MILWAUKEE — SAINTKATEARTS.COM

CAST

Sharks

Maria	Liesl Collazo*
Anita	Courtney Arango*
Bernardo	José-Luis Lopez, Jr.*
Chino	Carlos A. Jimenez
Pepe/Maria's Father	Mark Cruz*
Luis	Joshua Ponce
Indio	Gilberto Saenz
Anxious	Austin Winter
Nibbles	AJ Morales
Rosalia	Mara Cecilia*
Consuela	Isabella Abel-Suarez
Teresita	Brianna Mercado*
Francisca	Gina dePool*
Estella/Maria's Mother	Brooke Johnson
Margarita	Reese Parish
Isabel	Isabel Bastardo
Gabriella	Terynn Erby-Walker

Jets

Tony	Jeffrey Kringer*
Riff	Jacob Burns*
Diesel	Clay Roberts*
A-Rab	Devin Richey
Action	Alex Hayden Miller*
Baby John	Alex Hatcher
Snowboy	Nick Parrott
Graziella	Rebecca Corrigan*
Velma	Kellie Hoagland*
Anybodys	Hope Endrenyi*
Minnie	Sydney Kirkegaard
Clarice	Georgina Pink

Adults

Doc	James Pickering*
Lt. Schrank/Glad Hand	Jonathan Wainwright*
Officer Krupke	Bill Watson*

Swing

Swing	Dan Castiglione
"I Feel Pretty" Swing	Isabel Bastardo

ORCHESTRA

Conductor/Pianist, **Dan Kazemi**; Trumpet, **Greg Garcia**; Drums, **Patrick Morrow**;
Reeds, **Johnny Padilla**; Bass, **Michael Ritter**; Violin, **Eric Segnitz**

UNDERSTUDIES

Maria—Mara Cecilia; Anita—Mara Cecilia; Bernardo—Carlos A. Jimenez; Chino—Joshua Ponce;
Pepe/Maria's Father—Gilberto Saenz; Rosalia—Isabella Abel-Suarez; Consuela—Gina dePool;
Teresita—Isabel Bastardo; Francisca—Isabel Bastardo; Maria's Mother—Isabella Abel-Suarez; Tony—
Clay Roberts; Riff—Nick Parrott; Diesel—Dan Castiglione, Alex Hatcher; A-Rab—Dan Castiglione,
Nick Parrott; Action—Dan Castiglione, Alex Hatcher; Baby John—Nick Parrott; Snowboy—Dan
Castiglione; Graziella—Gina dePool, Sydney Kirkegaard; Velma—Gina dePool, Sydney Kirkegaard;
Anybodys—Kellie Hoagland, Sydney Kirkegaard; Somewhere Singer—Mara Cecilia; Doc—Bill
Watson; Schrank/Glad Hand—Nick Parrott; Krupke—Jonathan Wainwright

MILWAUKEE REPERTORY THEATER

#NunsenseMKE @milwrep

NOVEMBER 8, 2019 - JANUARY 12, 2020 | STACKNER CABARET

A Musical That Has Made Millions Laugh

Nunsense

A MUSICAL COMEDY

Book, Music and Lyrics by **Dan Goggin** | Directed by **Malkia Stampley**



"The audience almost never stops laughing!"

— *Variety*

The Rep
MILWAUKEE

Part of the Camille and David Kundert Stackner Season

Executive Producers: **Margaret Dethloff & Terri Zeh,**
Beth & Pete Gottsacker, Camille & David Kundert

Associate Producers:
Laura & Adam Peck

Sponsored in part by:
UPA
UNITED PERFORMING ARTS FUND

www.MilwaukeeRep.com | 414-224-9490

SONG LIST

ACT I:

“Prologue”
 “Jet Song”
 “Something’s Coming”
 “The Dance at the Gym”
 “Maria”
 “Balcony Scene”
 “America”
 “Cool”
 “One Hand, One Heart”
 “Tonight”
 “The Rumble”

ACT II:

“I Feel Pretty”
 “Ballet Sequence”
 “Somewhere”
 “Procession and Nightmare”
 “Gee, Officer Krupke”
 “A Boy Like That and I Have A Love”
 “Finale”

PRODUCTION SUPPORT

Associate Music Director/Rehearsal Accompanist.....**Paula Foley Tillen**
 Music Technology Assistant.....**Kurt Cowling**
 Associate Choreographer.....**Brianna Mercado***
 Dance Captains.....**Dan Castiglione, Brianna Mercado***
 Fight Captain.....**Dan Castiglione**
 Assistant Stage Manager.....**Kimberly Carolus***
 Production Assistant.....**Emily Wright**
 Stage Management Resident.....**Krista Kanderski**
 Assistant Director.....**Jonathan Hetler**
 Community Consultant.....**Nelia Olivencia**

West Side Story will be performed with one 20 minute intermission.

The videotaping or other video or audio recording of this production is strictly prohibited.

* Member of Actors’ Equity Association, the Union of Professional Actors and Stage Managers in the United States.

PRODUCTION STAFF

Director of Production.....**Jared Clarkin**
 Associate Production Manager.....**Kaitlyn Anderson**
 Co-Technical Director.....**John Houtler-McCoy**
 Co-Technical Director.....**Sean Walters**
 Properties Director.....**Jim Guy**
 Charge Scenic Artist.....**Jim Medved**
 Costume Director.....**Nicholas Hartman**
 Lighting & Video Director.....**Aaron Lichamer**
 Sound Director.....**J Jumbelic**
 Production Stage Manager.....**Kimberly Carolus***

Milwaukee Repertory Theater operates under an agreement between the League of Resident Theatres and Actors’ Equity Association, the Union of Professional Actors and Stage Managers in the United States. The scenic, costume, lighting and sound designers in LORT Theatres are represented by United Scenic Artists, Local USA-829 of the IATSE and our stagehands and carpenters are members of Milwaukee Theatrical Stage Employees’ Union IATSE Local 18. The Rep is an equal opportunity employer. Milwaukee Rep is proud to be a member of The United Performing Arts Fund (UPAF), which provides major annual financial support.



THANK YOU TO OUR 2019 GALA CORPORATE SPONSORS

PRESENTING SPONSOR

BMO



VALET SPONSOR



Northwestern
Mutual

EXECUTIVE PRODUCERS



GODFREY & KAHN s.c.

HUSCH
BLACKWELL

KOHL'S

SAINT KATE
THE ARTS HOTEL



Rockwell
Automation



We Energies
Foundation

CORPORATE TABLE SPONSORS

Baird
CG Schmidt
Deloitte
EUA
Ernst & Young
Foley & Lardner LLP
Harley-Davidson
Johnson Controls
KPMG
ManpowerGroup
Phoenix Investors
PwC
Quarles & Brady LLP
Reinhart Boerner Van Deuren, s.c.
Wells Fargo
West Bend Mutual

DIRECTOR'S NOTES



Mark Clements
Artistic Director

Throughout my childhood and during my now, decently long career, I have probably seen *West Side Story* performed in more productions than I have any other play or musical. I'm not exactly sure how many times—which tells you it's a lot—but it's probably somewhere between 10-15. Why it is so often produced, and why I have been drawn to performances of it again and again, speak to the fact that *West Side Story* is unquestionably a groundbreaking piece of theater.

The 2019/20 Season is an important and meaningful one for me, as it marks the beginning of my 10th Anniversary as Artistic Director of Milwaukee Rep. To honor the proud achievement I feel for this event, I really wanted to choose a season that was special for our audiences—and kick it off with a musical that would truly align with our theater's mission to *entertain, provoke, inspire, and reflect Milwaukee's rich diversity*. In searching for a piece that promotes tolerance, humanity, provokes meaningful thought and conversation, and gives us a sense of redemption and hope in these deeply polarizing times we find ourselves living in right now, I continually came back to one piece: *West Side Story*.

West Side Story, now 62 years old, but more relevant than ever, is a seminal work of the American Theatre, that many people have some small knowledge of, even if perhaps they have never actually seen it live in a theatre. It has been on Milwaukee Rep's bucket list for some years now, and is a piece regularly requested by many of our patrons. Apart from the sheer scale and expense of such an undertaking, it's an incredibly difficult show to produce, particularly because of the extreme demands it places upon its predominantly young, and pre-requisite, triple-threat cast. They need to be able to sing Bernstein and Sondheim's complex, operatic/jazz/musical theatre fusion score, brought to vibrant life here, in our production, by my long-time collaborator, music director Dan Kazemi; tell a story through groundbreaking dance, pioneered and conceived by the legendary Jerome Robbins, now reinterpreted for Milwaukee Rep by Jon Rua, for the way young people move and dance today; and finally to bring a level of authentic street tough, savvy, brutality, and smarts to Arthur Laurents' brilliant, but oft overlooked book. Our phenomenal cast features actors who are making their first appearance, (and in some cases, professional debuts) at Milwaukee Rep, alongside more familiar faces, including Jim Pickering, who has performed on Milwaukee Rep's stages, close to 200 times. Supported by a courageous, and visionary creative team, we are excited by the challenge of making one of the greatest musicals of all time, live and breathe for you tonight.

West Side Story wasn't initially a shoo-in for success: it was a socially-conscious, contemporary musical version of Romeo and Juliet where street hoodlum protagonists, danced ballet steps to mambo beats, while singing show tunes, and unfolding a story about the need for love in a world overcome by fear and intolerance. Somehow, all these pieces, came together in an unlikely, but perfect way that defied the dramaturgical, and commercial logic of the time, to finally become what Arthur Laurents, referred to as a "*theatrically sharpened illusion of reality.*" *West Side Story*, even all these years later, provides a way for our community to come together through the shared experience of powerful live theatre, that aspires to reach for a better place of understanding and acceptance.

It has been a great joy and privilege to bring this seminal story of the American Theatre, to life in new ways, and we hope you find as much resonance and beauty in it as we have. If this is your first time at Milwaukee Rep or your 200th, thank you and welcome. "There's a place for [you]" HERE.

Mark Clements
Artistic Director
September 2019

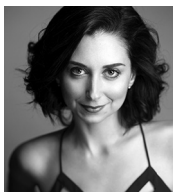
BIOGRAPHIES



Isabella Able-Suarez,
Consuela

Isabella recently graduated from Southern Utah University with her BFA in theatre and a minor in dance

performance. At SUU, she played Alexi Darling in (and was dance captain for) *Rent*, various roles in *The Laramie Project*, Bielke in *Fiddler on the Roof*, Veronica Sawyer in *Heathers*, and Charles Guiteau in *Assassins*. She won acting awards for her work in *The Laramie Project* and *Assassins*. Isabella spent her senior year as artistic director of Second Studio, a student-run theatre company. While in school, she also played Marina in Women of Will's production of *Pericles*. She spent an amazing summer at the Utah Shakespeare Festival where she was in the ensemble of *The Greenshow* and *Launcelot Gobbo* in an acclaimed production of *The Merchant of Venice*. Isabella also works as Executive Assistant for StateraArts, an organization dedicated to bringing women+ into full and equal participation in the arts. **Residency sponsored by Connie and John Kordsmeier.**



Courtney Arango,
Anita

Cincinnati Playhouse in the Park, Milwaukee Rep, Seattle Rep and The Ordway: *In the Heights*; Moonlight Stage

Productions and Weston Playhouse: *West Side Story*; The Muny: *Shrek*, *The Addams Family* and *Mary Poppins*; The Fulton Theatre: *Footloose*; Maine State Music Theatre: *Spring Awakening*. CONCERTS: Joe's Pub: *VISIONS*; The Muny: *An Evening with the Stars* (Featuring: Chita Rivera, Matthew Morrison and Heather Headley). TV/ FILM: PBS: "The Gershwin Prize (Honoring Gloria & Emilio Estefan)" - Performed with the Original Broadway Cast of *On Your Feet!* Courtney would

like to thank Milwaukee Rep, Avalon Artists Group and Her Loved Ones. It is an honor to share this story and rep her Cuban-American roots among such a passionate group of artists! (Hebrews 10:23) Instagram: @courtney_arango or find her at courtneyarango.com.



Isabel Bastardo,
Isabel

Isabel is a junior at Golda Meir High School and is so excited to be in *West Side Story*! She was last in Milwaukee

Rep's PTI production of *Everybody (Cousin/ Somebody)*. Other recent productions include *Tinker Bell (Pirate)* at First Stage, *As You Like It (Sir Oliver Martext/First Lord)* with First Stage's Young Company and *A Christmas Carol (Ensemble)* with Milwaukee Rep. Be sure to catch her this winter in The Rep's *A Christmas Carol* as Martha Cratchit. When not acting, Isabel loves to dance. She is grateful for the support her family, friends and mentors.



Jacob Burns,
Riff

Jacob is a Detroit native and a recent graduate of Texas State University. Regional credits include: *Hairspray*

(Dallas Theater Center); *Newsies*, *West Side Story* (Connecticut Rep); *Mamma Mia (Casa Mañana)*. Thanks and love to the creative team, HYBRID & MT19. Vote this November! www.jacob-burns.com



Dan Castiglione,
Swing

Originally from New Jersey, Dan Castiglione is a professional dancer who is now based out of Los Angeles.

He is 25 years old and signed to Bloc

BIOGRAPHIES CONT.

Talent Agency. His professional credits include films like "The Intern," "Popstar: Never Stop Never Stopping" and "Isn't It Romantic" as well as TV shows including "The Tick," "The Marvelous Mrs. Maisel" and "Barry." Earning a Bachelor's degree from Stevens Institute of Technology in Music Technology, Dan continues to explore all art forms. Follow @imstjigs



Mara Cecilia,
Rosalia

I am the combined effort of those I love. Thank you Mom, Dad, Todd, HCKR and all who have guided me here.



Liesl Collazo,
Maria

Milwaukee Rep Debut! Liesl is a native of Guaynabo, Puerto Rico and is honored to be playing this role.

She is a graduate of the musical theatre department at the University of Michigan, where she played roles such as Franca in *The Light in the Piazza* and Stephano in *The Tempest*. She was most recently in the regional premiere of *On Your Feet!* at Gateway Playhouse (Ensemble, Rebecca u/s). Thanks to my manager Steve and Melissa at CESD. Gracias a mi familia por todo su apoyo y a mis amigos que han venido desde lejos. Para mi isla.



Rebecca Corrigan,
Graziella

Rebecca was born and raised in a suburb of Detroit, Michigan. Since moving to New York five years ago, Rebecca

has worked in various fields in the dance industry. Some credits include *Invisiball* with Nadine Bommer Dance Company at New Victory Theater on Broadway as

well as at Tennessee Performing Arts Center, a featured dancer in Warner Brother's upcoming film "In the Heights" and performing at the Javits Center for Comic Con. Rebecca has danced for artists such as Coheed and Cambria, 3OH3!, Nova Zef, Nickelback and Kid Rock. She has been featured twice in *Dance Spirit* magazine as a "mover and shaker to know." Rebecca has been training and performing with Nadine Bommer Dance Company, Vessels, Jon Rua's TheGrit and Mary Grace McNally & Artists.



Mark Cruz,
Pepe/Maria's Father

To take part in *West Side Story* is the culmination of many things that define the word

"Invaluable": Growing up in the cultural epicenter that is New York; finding a sense of belonging in the dance community; meeting lifelong friends as well as life-changing mentors like choreographer Jon Rua; building a career through such varied opportunities as *Aida* at The Muny, "Saturday Night Live" and the feature film "Isn't It Romantic;" and finally here, in Milwaukee, stepping into a work of art both timeless and forever timely. Invaluable. To my mom, family, agents, the word applies again, unquestionably. Love and appreciation to all. (Encourage me to be better at social media: @markcruz17)



Gina dePool,
Francisca

Gina is a Miami native who graduated with a B.F.A. in Dance from the Boston Conservatory.

She is an NYC-based dancer whose career has spanned from movies to immersive shows in the NYC area. She is grateful to be a part of this production of *West Side Story*. Specials thanks to my family, CESD, Will Bryan and Dale Brown Casting. Follow @ginadepool



Hope Endrenyi,
Anybodys

Hope received her B.F.A. in dance from Southern Methodist University. Following graduation, she spent two years as a Universal Swing for *Hamilton: An American Musical*. Now, she is so excited to be making her debut here at Milwaukee Rep! Endless love to my family and partner - who I could not do this without.



Terynn Erby-Walker,
Gabriella

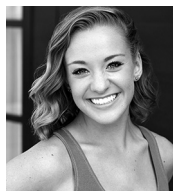
Talk about excited... Terynn, who is beginning her freshman year at Golda Meir High School, is absolutely thrilled to make her Milwaukee Repertory Theater debut in *West Side Story*. She looks forward to any opportunity to sing, dance and act and has performed in several area plays, which include Golda Meir's *Lion King Jr.*, *Seussical Jr.*, *Willy Wonka Jr.* and *Shrek Jr.*; First Stage's *Rudolph the Red-Nosed Reindeer*, *The Wiz* and *Big River*; and Skylight Music Theatre's *Hairspray*. Terynn is thankful for her family, teachers and friends for their continued support in all of her endeavors.



Alex Hatcher,
Baby John

Alex recently graduated from Boston University's College of Fine Arts with a B.F.A. in Acting and concentrations in Dance and Musical Theater. He also studied classical acting for one semester at the London Academy for Music and Dramatic Arts. Some of his recent stage credits include *1776* (Lyman Hall), *Mr. Burns: A Post-Electric Play* (Gibson/Homer), and *Hamlet* (Hamlet). Originally from Wisconsin, Alex is very excited to

return to the Midwest as an Emerging Professional Resident with Milwaukee Rep. He used to perform on many different stages in his beautiful home state as a featured dancer and singer of the "Kids from Wisconsin" touring troupe and as a young performer with First Stage and Skylight Music Theatre in Milwaukee. In his free time, he enjoys hiking, canoeing, traveling, and sampling as many different foods on a stick as the Wisconsin State Fair has to offer. AlexanderHatcher.com. **Residency sponsored by Catherine and Buddy Robinson.**



Kellie Jean Hoagland,
Velma

Kellie is extremely excited to be performing in this timeless classic. She has worked extensively with Norwegian Cruise Lines performing and acting as a creative on multiple projects. She couldn't be happier joining this talented group of performers. Kellie would like to send love and thanks to her family, friends and MSA agency for their constant love and support. Follow her at @kelliejeanhoag



Carlos A. Jimenez,
Chino

Carlos is thrilled to be performing again in this classic musical *West Side Story* at Milwaukee Repertory Theater. Hailing from Morovis, Puerto Rico, and growing up in New Jersey, he resides now in New York City and is proudly represented by the Daniel Hoff Agency. Recent credits include performing in *In the Heights* at the Mason Street Warehouse as well as performing in a previous *West Side Story* at the Maltz Jupiter Theatre. Getting a chance to tell this epic tale on stage again is something very important

BIOGRAPHIES CONT.

to Carlos and he'd like to tribute this to his family. A special regard and a big thank you is to be made to the Milwaukee Rep team and to his Mom, Dad and his husband Mark for their constant help and support for Carlos and his career.



Brooke Johnson,
Estella/Maria's Mother

Brooke is excited to be making her debut with Milwaukee Rep this 2019/20 Season. She originally hails from the

sunny central coast of California and is a recent alum of The Pacific Conservatory Theatre's Professional Actor training program. Her most recent roles on PCPA's mainstage, include: #11 in *The Wolves*, Woman #2/Lady Eugenia in *A Gentleman's Guide to Love and Murder*, Brave Girl/Mrs. Darling (u/s) in *Peter Pan*, Ancestor/Swing in *The Addams Family*, Programmer in *The (curious case of the) Watson Intelligence*. **Residency sponsored by David and Madeleine Lubar.**



Sydney Kirkegaard,
Minnie

Sydney is thrilled to return to Milwaukee Rep! Past Rep shows include three productions of *A Christmas Carol* (Fan,

Martha, Smudge). Sydney received her BFA in musical theater at Texas Christian University. Most recent credits include *Kiss Me Kate* at Skylight Music Theatre and *A Chorus Line* (Bebe) and *Seven Brides for Seven Brothers* (Sarah) at the Riverside Theater. Other credits include: *Pure Country*, *Anything Goes* at Lyric Stage in Dallas. Sydney's dance training includes: YDA (Milwaukee), Steps on Broadway & BDC (NYC). @sydkirkofficial



Jeffrey Kringer,
Tony

Jeffrey is making his Milwaukee Rep debut! He's a New York actor who is thrilled to take on a dream role and share

the stage with a coolly-cool company. He recently graduated from SUNY Fredonia! Since then he's been proud to put his B.F.A. in Musical Theatre to good use. This year's credits include: Dickon in *The Secret Garden*, Frank Abagnale Jr. in *Catch Me If You Can* and Sebastian in *Cruel Intentions: The 90s Musical* First National Tour. Much love to his supporters! May we all recognize the tragedy of division. RIP Hal Prince. IG: @jeffreykringer



Jose-Luis Lopez Jr.,
Bernardo

Jose-Luis is thrilled to be making his Milwaukee Rep debut with *West Side Story*. Lopez made his Broadway debut in

the Tony and Grammy Award-winning musical *In the Heights*, later hitting the road as Graffiti Pete in the critically acclaimed 1st National Tour. Lopez will appear in the Jon Chu directed movie adaptation of "In the Heights," in theaters nationwide summer 2020. Fave credits include: *On Your Feet!* (Broadway/National Tours), *Fuerza Bruta* (Off-Broadway/China), *Aida* and *Jesus Christ Superstar* (Muny – Regional; Choreographed by Jon Rua). Love to my family, close friends and lovers of art worldwide. Proud Latino in theatre. FOLLOW ME: (@JoseLuis_____ on Instagram)



Brianna Mercado,
Teresita/Associate Choreographer

Brianna is honored to join the Milwaukee Repertory family this season. Credits include

BIOGRAPHIES CONT.

Jesus Christ Superstar (The Munny), *Aida* (The Munny), Phish and the recent film "Isn't It Romantic." Brianna travels around the nation as a teacher, choreographer, and inspirational speaker, and gave her very own TEDx talk. She has a B.A. in Dance and Performance Studies & Social Welfare from University of California Berkeley and is faculty at Peridance Capezio Dance Center in New York City. She extends her deepest gratitude to her friends & family for the infinite support and love. bripositive.com. @BriPositive



Alex Hayden Miller,
Action

Milwaukee Rep debut!
Oklahoma City native
and University of
Michigan graduate.
Favorite credits

include: *42nd Street* (Billy u/s) at Fulton, *Newsies* (Morris Delancey) at The Munny, *Mamma Mia!* (Eddie) at Fulton and *The Tempest* (Ferdinand) at University of Michigan. Thanks to Mom, Dad, Elle, DGRW and especially Mark Clements and Jon Rua for this opportunity. Special thanks to Brent Wagner. A vital part of the Michigan education is his lecture on "Maria" and *West Side Story*. Thank you for giving me knowledge and reverence for the history of musical theatre. Proud A.E.A. member. Insta-@thejackedtapper Thunder up and Go Blue!



AJ Morales,
Nibbles

AJ is thrilled to be making his debut at Milwaukee Rep! After completing the two-year acting program at PCPA,

AJ signed with Trinity Artists International and began his journey auditioning in Los Angeles, where he currently resides. He recently finished an internship with PCPA where he did an outreach tour of *Oliver Button is a Sissy*. Other PCPA credits

include Ensemble/Quasimodo u/s in *The Hunchback of Notre Dame*, Angel in *Rent*, and Carpet/Ensemble in *Beauty and the Beast*. He would like to thank his family and friends for their never-ending support.



Reese Parish,
Margarita

Reese, a senior at Nicolet High School, is honored to be back performing for Milwaukee Rep. This is her third collaboration

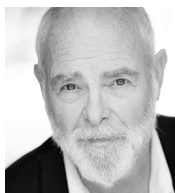
with The Rep, previously playing Wendy Darling in the world premiere production of *Lost Girl* and Love in *Everybody* – both produced by the Professional Training Institute. Other theatre credits include *Cassandra* (*Bliss (or Emily Post is Dead)*) and *Annie Jump* (*Annie Jump and the Library of Heaven*), both with Renaissance Theaterworks. She also played Z in a short film called "The Revolt of Color." When not on stage, Reese may be found singing, dancing or running track.



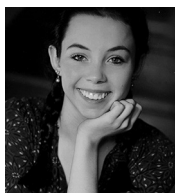
Nick Parrott,
Snowboy

Nick is originally from Gurnee, Illinois, and is a recent graduate from Marquette University, where he received

his BA in Theatre Arts and Dance. He is thrilled to be joining the Emerging Professional Residency. Recent credits include: *West Side Story*, *The Old Man and the Old Moon*, *Shakespeare in Love* (Hope Summer Repertory Theatre); *Twelfth Night* (Summit Players Theatre); *Hairspray* (Skylight Music Theatre); and *Little Women* and *Anything Goes* (Marquette University). Later this fall, Nick will be seen as Davey in *Newsies* at Skylight Music Theatre. www.nicholasparrott.com

**James Pickering,**
Doc

Jim returns to Milwaukee Repertory Theater for his 46th consecutive season. In recent years he was seen here most notably as Candy in *Of Mice and Men*, Dr. Chumley in *Harvey* and Froggy LeSeur in *The Foreigner*. He has acted at nearly every venue in Wisconsin. During the past several years he played Alex Priest in *Heisenberg* at Forward Theater in Madison, Tony Reilly in *Outside Mullingar* at Next Act Theatre in Milwaukee, Pozdnyshv in *The Kreutzer Sonata* at Renaissance Theaterworks, Gunner in *The Outgoing Tide* at In Tandem Theatre, Robert in *A Life in the Theatre* at Alchemist Theatre and Lear in *King Lear* at Optimist Theatre's Shakespeare in the Park, a company he helped found ten years ago. He is an active voice-over talent, and lives in Bay View with his wife, actress Tami Workentin, his stepson Edan Ness, and their dogs, Joxer and Frankie.

**Georgina Pink,**
Clarice

Georgina was born in York, England, and traveled to the United States with her family as a baby. She has grown up in and around the theatre and has received training in drama, voice and dance through First Stage, Children's Theatre Company's training program, the Milwaukee Ballet School and her high school drama department. She has also enjoyed opportunities to perform at Milwaukee Repertory Theater and at Skylight Music Theatre and the Milwaukee Ballet. She loves the outdoors, looking after animals, her friends and seeing theatre and art wherever she can.

**Joshua Ponce,**
Luis

Joshua is stoked to be making his Milwaukee Rep debut in this exciting season! He is fresh off the plane from California, where he spent the last two years with PCPA Theaterfest training and appearing in *Freaky Friday the Musical* (Ensemble), *A Gentleman's Guide to Love and Murder* (Ensemble), *Peter Pan* (Twin 1), *The Theory of Relativity* (Curtis), and *The Addams Family* (Matador Ancestor). Endless Thank Yous to God, my family and friends for their love and support. www.joshuaponce.com

**Devin Richey,**
A-Rab

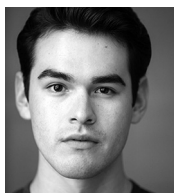
Devin is an NYC-based performer, choreographer and educator having earned a B.F.A. in Commercial Dance from Pace University, with concentrations in Choreography and Pedagogy. Performance and choreography credits span commercial, concert, immersive, theatre, TV and film. Credits include: "The Marvelous Mrs. Maisel," *We Are Here* (Brent), *Bridesmaids: A Dance Narrative* (Dance Lab NY). Other credits include choreographing for Gina Volpe, coaching Olympic ice skaters, and performing in Spiegelworld's *Untitled IV* at Burning Man. Devin is founder of Human's Playground, and is represented by Bloc NYC. He's stoked and grateful to be dancing this story with so many lovely humans! Connect with me @devrichey

**Clay Roberts,**
Diesel

Born and raised in New Zealand, trained in Australia (graduate of WAAPA) and now

BIOGRAPHIES CONT.

living in New York, Clay is stoked to be making his Milwaukee Repertory Theatre debut! Regional: *Disney's Newsies* as Jack Kelly (Theatre By The Sea). Australian Credits: *Matilda* (u/s Escapologist, Doctor, Michael), *Mamma Mia!* (u/s Sky, Eddie) and *Next to Normal* (Henry). International Credits: *Cats* (Macau) as Munkustrap, *Cats* (South Korea) as Coricopat (u/s Munk, Tugger, Mungo, Macavity, Alonzo). A huge thanks to Michael and William for their support from The Roster. And big love to his family and friends.



Gilberto Saenz,
Indio

Gilberto is thrilled to be making his debut at Milwaukee Rep! Originally from Donna, Texas, Gilberto graduated with a B.A. in Theater Studies from Yale University. Previous credits include Chuck Biggs in *She Kills Monsters* (Yale DRAMAT/Yale Rep); Prior Walter in *Angels in America*, Archie Nunn in *So, I Killed A Few People...*, and Miguel de Cervantes/ Don Quixote in *Man of La Mancha*. Gilberto is an alumnus of the National Theatre Institute at the Eugene O'Neill Theater Center (Theatermakers Ensemble, 2018). He is so thankful to continue telling stories—this time in Wisconsin!



Jonathan Wainwright,
Schrank/Glad Hand

Jonathan is excited to work with so many incredible artists on this beautiful, iconic and always relevant story. A proud Milwaukee artist, he was most recently seen at Next Act Theatre in *How to Write a New Book for the Bible*, and following *West Side Story* will joyously take on the role of Ebenezer Scrooge for the fourth year. Past favorites include Tim in *The Good Father* at Milwaukee Chamber Theatre opposite his amazing wife, Laura

Gray; Boris Pronsky in last year's *Junk*; and George in *Of Mice And Men*. Thanks to Mark and all of the Milwaukee Rep family for the great work, the positivity and the support.



Bill Watson,
Officer Krupke

Regional: Seattle Repertory Theatre, A Contemporary Theatre, Shakespeare and Company, First Stage, In Tandem Theatre, Intiman, Colorado Shakespeare Festival, The Empty Space. Seen most recently in *Deathtrap* at Milwaukee Chamber Theatre, Bill is also an Associate Professor of Theatre at UWM, and a co-founder, with his wife Nancy and colleague Jim Tasse, of Feast of Crispian, an organization using acting, Shakespeare text and performance to aid trauma survivors, particularly military veterans with complications connected to trauma. Feast of Crispian is a community partner of Milwaukee Rep. This is Bill's Milwaukee Rep debut.



Austin Winter,
Anxious

Austin is happy to join Milwaukee Rep this season as an Emerging Professional Resident. Past credits include *Matilda*, *Romeo and Juliet*, and *A Midnight Cry* (First Stage); *The Wiz*, *Godspell* (Hope Summer Repertory Theatre); *Chicago* (Broadway Theater Project); and *Seussical* (Carthage China Tour). Austin has originated roles in *A Seat at the Table* (by Regina Taylor); *The Breath of Stars* (by Caridad Svich) and *Wherever You've Been* (by Caitlin DiGiacomo). Favorites from school include *Sideshow* (Jake), *Drood* (Durdles), *Marriage a la Mode* (Leonidas), and *The Little Mermaid* (Sebastian). Austin is a proud graduate of Carthage College and The Open Jar Residency in New York. Off the stage, he is a costume designer and

BIOGRAPHIES CONT.

a multimedia studio artist. Love and thanks to mom and dad. [@austwintermint](http://www.austinwinter.com) 1Jn4:18. **Residency sponsored by Four Four Foundation.**

Creative Team

Jerome Robbins,
*Original Direction and
Choreography, Conception*

Mr. Robbins is world renowned for his work as a choreographer of ballets as well as his work as a director and choreographer in theater, movies and television. Although he began as a modern dancer, his start on Broadway was as a chorus dancer before joining the corps de ballet of American Ballet Theatre in 1939, where he went on to dance principal roles in the works of Fokine, Tudor, Massine, Balanchine, Lichine, and de Mille. His first ballet, *Fancy Free* (1944) for ABT, still in many repertoires, celebrated its fiftieth birthday on April 18, 1994. While embarking on his career in the theater, Mr. Robbins simultaneously created ballets for New York City Ballet, which he joined in 1949, and became an Associate Artistic Director with George Balanchine. Mr. Robbins has directed for television and film as well, with his co-direction and choreography of "West Side Story" winning him two Academy Awards. After his Broadway triumph with *Fiddler on the Roof* in 1964, Mr. Robbins continued creating ballets for New York City Ballet. He shared the position of Ballet-Master-in-Chief with Peter Martins until 1989. He has created more than 60 ballets, including *Afternoon of a Faun* (1953), *The Concert* (1956), *Les Noces* (1965), *Dances At a Gathering* (1969), *In the Night* (1970), *In G Major* (1975), *Other Dances* (1976), *Glass Pieces* (1983) and *Ives Songs* (1989) which are in the repertoires of the New York City Ballet, the Ballet de l'Opera de Paris and major dance companies throughout the world. His most recent ballets include *A Suite of Dances with Mikhail Baryshnikov* (1994), *2 & 3 Part Inventions* (1994), *West*

Side Story Suite (1995) and *Brandenburg* (1996) all of which premiered at New York City Ballet. In addition to his two Academy Awards, Mr. Robbins's awards and citations include four Tony Awards, five Donaldson Awards, two Emmy Awards, the Screen Directors' Guild Award and the New York Drama Critics Circle Award. Mr. Robbins is a 1981 Kennedy Center Honors Recipient, was awarded the Commandeur de L'Order des Arts et des Lettres, is an honorary member of the American Academy and Institute of Arts and Letters, and was awarded a National Medal of Arts as well as the Governor's Arts Awards by the New York State Council on the Arts. Some of his Broadway shows include *On the Town*, *Billion Dollar Baby*, *High Button Shoes*, *West Side Story*, *The King and I*, *Gypsy*, *Peter Pan*, *Miss Liberty*, *Call Me Madam* and *Fiddler on the Roof*. In 1989, *Jerome Robbins Broadway* won six Tony Awards including Best Musical and Best Director. He was most recently awarded the French Chevalier dans l'Ordre National de la Legion d'Honneur. Jerome Robbins passed away in 1998.

Arthur Laurents,
Book

An award-winning playwright, screenwriter, librettist, director and producer, Arthur Laurents has been responsible for creating the librettos of many Broadway shows including *Gypsy*, *Anyone Can Whistle*, *Do I Hear A Waltz?*, *Hallelujah, Baby!* and *Nick & Nora*. He wrote the screenplays for *The Snake Pit*, *Anna Lucasta*, *Anastasia*, *Bonjour Tristesse*, *The Way We Were* and *The Turning Point*. He also wrote the plays *Home Of The Brave*, *The Time Of The Cuckoo* and *A Clearing in The Woods*. He directed *I Can Get It For You Wholesale*, *Anyone Can Whistle*, *Gypsy*, *La Cage Aux Folles*, *Birds Of Paradise* and *Nick & Nora*.

Leonard Bernstein,
Music

Leonard Bernstein (August 25, 1918 – October 14, 1990) was a world-renowned musician throughout his entire adult life. He served as Music Director of the New York Philharmonic and conducted the world's major orchestras, recording hundreds of performances. His books and the televised Young People's Concerts with the New York Philharmonic established him as a leading educator. Bernstein's compositions include *Jeremiah*, *The Age of Anxiety*, *Kaddish*, *Serenade*, *Five Anniversaries*, *Mass*, *Chichester Psalms*, *Slava!*, *Songfest*, *Divertimento for Orchestra*, *Missa Brevis*, *Arias and Barcarolles*, *Concerto for Orchestra*, and *A Quiet Place*. He also composed for the Broadway musical stage, creating masterpieces such as *On the Town*, *Wonderful Town*, *Candide*, and the immensely popular *West Side Story*. In addition to the *West Side Story* collaboration, Bernstein worked with choreographer Jerome Robbins on three major ballets, *Fancy Free*, *Facsimile*, and *Dybbuk*. Bernstein was the recipient of many honors, including the Antoinette Perry Tony Award for Distinguished Achievement in the Theater, 11 Emmy awards, the Lifetime Achievement Grammy Award, and the Kennedy Center Honors.

Stephen Sondheim,
Lyrics

Mr. Sondheim wrote the music and lyrics for *Saturday Night* (1954), *A Funny Thing Happened on the Way to the Forum* (1962), *Anyone Can Whistle* (1964), *Company* (1970), *Follies* (1971), *A Little Night Music* (1973), *The Frogs* (1974), *Pacific Overtures* (1976), *Sweeney Todd* (1979), *Merrily We Roll Along* (1981), *Sunday in the Park with George* (1984), *Into the Woods* (1987), *Assassins* (1991), *Passion* (1994) and *Road Show* (2008) as well as lyrics for *West Side Story* (1957), *Gypsy* (1959) and *Do I Hear a Waltz?* (1965) and additional lyrics for *Candide* (1973). Anthologies of his work include *Side By Side By Sondheim* (1976),

Marry Me a Little (1981), *You're Gonna Love Tomorrow* (1983), *Putting It Together* (1993/99) and *Sondheim on Sondheim* (2010). He composed the scores of the films "Stavisky" (1974) and "Reds" (1981) and songs for "Dick Tracy" (1990) and the television production "Evening Primrose" (1966). His collected lyrics with attendant essays have been published in two volumes: *Finishing the Hat* (2010) and *Look, I Made A Hat* (2011). In 2010, the Broadway theater formerly known as Henry Miller's Theatre was renamed in his honor.

**Mark Clements,**
Artistic Director

Mark is an award-winning international theater director whose work has appeared in over 100 major theaters

throughout Europe and the United States. He began his tenure as Artistic Director with the 2010/11 Season by bringing musicals to the mainstage, starting a tradition that is now the highlight of every season, including *Cabaret*, *Next To Normal*, *Assassins*, *Ragtime*, *Dreamgirls*, *The Color Purple*, *Man of La Mancha*, *Guys and Dolls* and *In the Heights*. Milwaukee Rep directing credits include the world premieres of *One House Over*, his own adaptation of the current *A Christmas Carol*, *Five Presidents* and *American Song*. Also directed for Milwaukee Rep: *Things I Know To Be True* (American Premiere), *Junk*, *The Glass Menagerie*, *Of Mice and Men*, *Othello*, *Death of a Salesman*, *The History of Involuntability*, *End of the Rainbow*, *Clybourne Park* and *Bombshells*. Some of his New York and international work includes *Speaking in Tongues*, *The Milliner* and *Blunt Speaking*, in addition to creating and directing the West End and UK National Tour of *Soul Train*. Prior to joining The Rep, Mark served as an Associate Artistic Director for several UK theater companies, most notably, Artistic Director for the award-winning Derby Playhouse in the UK from 1992 - 2002,

BIOGRAPHIES CONT.

where he directed over 40 productions. He has been nominated for an Olivier Award and several UK Theatre Awards, and has won three Barrymore Awards from his time at Walnut Street Theatre in Philadelphia. He currently serves on the National Advisory Board for the Lunt-Fontanne Fellowship Program at Ten Chimneys. Mark is currently working with Ayad Akhtar on adapting his critically acclaimed novel *American Dervish* for the stage to make its world premiere at Milwaukee Rep in an upcoming season.

Jon Rua, *Choreographer*

Choreographer: *SpongeBob Squarepants* ('Going Gets Tough' Asst. Choreographer), *The Cher Show* ('Believe' Choreographer), "Isn't It Romantic" (Assistant Choreographer), Phish, Coheed & Cambria, *Aida* (Muny), *Jesus Christ Superstar* (Muny), Travelers Insurance, ABC's "Celebrity Wife Swap," NBA, Broadway Bares. Jon's work has been influential to Broadway's *Hamilton*, *On Your Feet!*, *Bring It On: The Musical*, *Hands on a Hardbody*, *In the Heights*. Actor: Broadway: *SpongeBob* (Patchy the Pirate), *Hamilton* (OBC Charles Lee, Hamilton Alternate), *Hands on a Hardbody* (Jesus Pena), *In the Heights* (Sonny & Graffiti Pete). Film: "Fall to Rise," "First Reformed," "Isn't It Romantic." TV: "Blacklist," "Blue Bloods," "Law & Order," "Verizon." Digital: "Mas Mejor." Off-Broadway: *Kung Fu*, *Elaborate Entrance of Chad Deity*, *Damn Yankees* (Encores!). Regional: Old Globe's *Somewhere* (Alejandro-Craig Noel Leading Actor nomination), *Bring It On: The Musical*, Mundy's *West Side Story*. Danced for Mariah Carey, Phish, Don Omar, Soulja Boy, Target, Billboard, Puma, Reebok, IBM, Panasonic.

Dan Kazemi, *Music Director*

Dan is a New York-based composer, actor, director, orchestrator and music director and is an Associate Artist at Milwaukee Rep. He most recently directed *Ring of Fire*:

The Musical of Johnny Cash at The Rep's Stackner Cabaret and Actors Theatre of Louisville. His recent musical direction credits for Milwaukee Rep include *In the Heights*, *The All Night Strut!*, *Murder for Two*, *Guys and Dolls*, *Man of La Mancha* and *Dreamgirls*. In Philadelphia, Dan recently musically directed *Lizzie* (Barrymore Award), *Herringbone* (Barrymore Nom) and orchestrated and musically directed the world premiere musicals *Field Hockey Hot* (Barrymore Nom) and *Tulipomania*. Dan's music has been performed at SDC's Mr. Abbott Awards, Le Cirque de Demain in Paris, Ballet Fleming and in the 213 collective's collaborations *Untitled Project #213* and *Your Attention Please!*. Dan is also the composer of a new musical, *The Tapioca Miracle*.

Todd Edward Ivins, *Scenic Designer*

Todd's passion is telling stories through design. Milwaukee Rep scenic designs: *Junk*, *A Christmas Carol*, *Of Mice and Men*, *Dreamgirls*, *Five Presidents*, *The Color Purple*, *The History of Invulnerability*, *Ragtime*, *Clybourne Park*, *Assassins*, *Next to Normal*. Scenic and costume designs include *Cabaret* and *Othello* (Milwaukee Rep) and *Dorian Gray* and *Mirror Mirror* (Milwaukee Ballet). Other Milwaukee credits include Michael Pink's *Beauty and The Beast* (Milwaukee Ballet). Favorites include *The Illusionists: Turn of the Century* (Broadway, National and International Tour), *Circus 1903* (International Tour and Las Vegas residency at the Paris Casino). Todd designs dance, plays, musicals, television and corporate events, ranging from intimate events to arenas. Radiant love to my muses, daughter Agatha and wife Abigail. Visit Todd's online portfolio at www.ivinsart.com.

Alexander B. Tecoma, *Costume Designer*

Alex has been a Draper in Milwaukee Rep's costume shop for the past 23 seasons.

BIOGRAPHIES CONT.

West Side Story is his 37th production at The Rep as costume designer. He was Rep Company Member of the Year for the 2004/2005 Season. Past designs at The Rep include *Ring of Fire*, *Songs for Nobodies*, *Guys and Dolls*, *Man of La Mancha*, *Dreamgirls*, *Liberace!* and *Ragtime*. Alex has designed costumes for Milwaukee Chamber Theatre, Renaissance Theaterworks, First Stage and Harley Davidson's 100th Anniversary Tour. Other professional credits include American Players Theatre, Great Lakes Theater Festival, Colorado Shakespeare Festival and Santa Fe Opera. He received his M.F.A. in Costume Design and Technology from University of Illinois. Alex is most proud of being part of the team that helped create "Stitching History from the Holocaust," an exhibit produced by the Jewish Museum of Milwaukee. <http://stitchinghistory.org/>

Yael Lubetzky, *Lighting Designer*

Yael has designed productions in New York City and regionally including the Broadway production of *Russell Simmons' Def Poetry Jam*. Recent designs include: *Her Portmanteau* (American Conservatory Theater, CA), *Cabaret* (Paramount Theatre, IL; Joseph Jefferson Award nomination), *Downtown Race Riot* (The New Group, NYC), *Evita* (Riverside Theatre, FL), *South Pacific* (Drury Lane Theatre, IL), *The Three Musketeers* (Syracuse Stage; Syracuse Area Live Theater Award nomination). Off-Broadway designs include productions at the Public Theater, Playwrights Horizons, Women's Project Theater, The Duke on 42nd Street, Cherry Lane Theatre, York Theatre Company. Regional theater designs include productions at Chicago Shakespeare Theater, Trinity Repertory Company, Arkansas Repertory, Children's Theatre Company and Clarence Brown Theatre.

Daniel Erdberg, *Co-Sound Designer*

PREVIOUS Milwaukee Rep: *The Lion*. NEW YORK CITY: The Public, Roundabout, City Center, 59E59, Atlantic, Prospect and HERE. HIGHLIGHTS: World Premieres of *Stonewall* (City Opera) and Lauren Gunderson's *The Heath*, American Premiere of Caryl Churchill's *Drunk Enough to Say I Love You*. REGIONAL: Arena Stage, Geffen Playhouse, ACT, Syracuse Stage, The Geva, Virginia Stage, Long Wharf and productions in Korea, Japan, China, Canada and Cuba. BROADWAY: More than ten Associate Design and production credits including *Glass Menagerie*, *Streetcar*, *Violet*, *Heiress* and *The Nance* (Sound Tony!). Daniel is a member of USA829, IATSE and SDC, and a graduate of Northwestern University.

Megan Henninger, *Co-Sound Designer*

Megan is excited to return to her hometown theatre – Milwaukee Rep! She is a Milwaukee-based designer and has served as designer and assistant designer on shows large and small. Favorite designs include *In the Heights* (Milwaukee Rep, Seattle Rep, CPIP), *Sweeney Todd* (Skylight Music Theatre), *A Streetcar Named Desire* (Williams Street Rep), *R.R.R.E.D* (New York Musical Theatre Festival), *The Martian Chronicles* (Fordham University) and *The Turn of the Screw* (Lyric Opera, Kansas City). Assistant designs include *You're Welcome America*, *Ghetto Klown*, *Stick Fly*, and *Blithe Spirit* (Broadway) and *Company* (Lincoln Center).

John Tanner, *Musical Supervisor*

John, a Milwaukee Rep Associate Artist, is a composer and sound designer. His experience covers a broad range of work in scoring, arranging and music composition for television, documentaries, radio, industrial video and theater. His original music has won

BIOGRAPHIES CONT.

numerous awards, including Golden Reel Awards, Telly Awards, national, regional and local American Advertising Federation Awards, Silver Microphone Awards. John has garnered Gold and Platinum sales certifications for his album engineering work. Projects include scores for NBC, ABC, Lionsgate, PBS and numerous theatrical productions around the country. Recent work includes the Milwaukee Public Museum and the Milwaukee Symphony Orchestra. Email: johnt@tannermonagle.com

Paula Foley Tillen,
Associate Music Director

Paula has been a professional musician in the Milwaukee area for over 40 years. She has served as lead teacher at First Stage Theater Academy, Brookfield Center for the Arts, and Pink Umbrella Theater Company, and as director of music at Southminster Presbyterian Church in Waukesha. Paula's music is found in the catalogues of several national publishing houses, as well as online at sheetmusicplus.com and pftillenmusic.com, and has been performed by community, high school, university and all-state choirs around the U.S.A. and Canada. Paula is certified as a yoga and meditation instructor and as a Reiki master practitioner.

Chuck Coyl,
Fight Choreographer

A professional fight director for more than 30 years, Coyl is a three time president of the Society of American Fight Directors. Recent credits include the Broadway production and national tour of *August: Osage County*; *The Crucible* and *Superior Donuts* at Steppenwolf Theatre Company; *2666*, *Another Word for Beauty*, *The Upstairs Concierge* at the Goodman Theatre; and *Sucker Punch* at Victory Gardens Theater, for which he received a Joseph Jefferson Award nomination. Coyl is a member of the North Carolina Stuntmen's Association

and a founding member of the Single Action Theatre Company.

Micha Espinosa,
Voice & Text Director

Micha is an Arizona-based artist, activist and teacher as well as a voice, speech, and dialect coach. She has performed, lectured and taught voice and speech around the world. Associate Professor (BFA, Stephens College; MFA Acting, U.C. San Diego) of Voice/Acting at Arizona State University; master teacher of Fitzmaurice Voicework (FV) and Director of Diversity for FV Institute; award-winning editor of the book *Monologues for Latino/a Actors* and co-editor of the forthcoming *Scenebook for Latinx Actors*. As a dialect specialist, she has worked with regional theater companies such as The Old Globe, Oregon Shakespeare Festival, Southwest Shakespeare, Arizona Theatre Company, Mixed Blood, Phoenix Theatre and the Coconut Grove Playhouse. She is passionate about social justice in actor training, global perspectives, and the cultural voice.

Frank Honts,
Casting Director

Frank is Director of Artistic Personnel at Milwaukee Rep. Prior to joining The Rep staff in 2016, Frank worked at a number of regional theaters including Utah Shakespeare Festival, Renaissance Theaterworks, The Goodman, California Shakespeare Theater, A Contemporary Theatre (Seattle), and Paramount Theatre. He has worked extensively as both a director and dramaturg, and was honored to be a directing resident at Milwaukee Rep in the 2013/14 Season. Frank spent two seasons as Artistic Associate at Forward Theater Company in Madison, and he was the inaugural recipient of the Michael Flachmann Fellowship at Utah Shakespeare Festival. He is a graduate of Brown University in Providence, Rhode Island.

Dale Brown Casting,
NY Casting

This production marks Dale's sixth collaboration with Milwaukee Rep. His recent New York work includes Life Jacket Theatre's acclaimed production of *America Is Hard to See* at HERE and the Drama Desk-nominated *Daddy Long Legs*. Some of his other regional credits include Paul Gordon's musical *Sense & Sensibility* for Chicago Shakespeare Theater, *Disgraced* for Syracuse Stage and the hit production of *In the Heights* for Milwaukee Rep, Seattle Rep and Cincinnati Playhouse. In collaboration with Duncan Stewart & Co. Dale cast the new musical *Nerds* for the Philadelphia Theatre Company, the NYC lab production of Maltby & Shire's new musical *Waterfall*, and a tour of Kathleen Marshall's production of *Anything Goes*. Dale spent over 5 years with Tara Rubin Casting, maintaining the North American companies of *The Phantom of the Opera* and *Billy Elliot* and working on the Broadway productions of *A Little Night Music*, *Jesus Christ Superstar*, *Guys & Dolls* and *Old Jews Telling Jokes* off-Broadway. Dale is a member of the Casting Society of America and an honors graduate of Kalamazoo College & the BESGL Theater Program in London. www.dalebrowncasting.com

Tara Kelly,
Stage Manager

Tara Kelly thinks it's cool to make her Milwaukee Rep debut with *West Side Story*! Selected Credits: *Cruel Intentions: The 90s Musical* (1st National Tour); *Mamma Mia!*, *Newsies* (NC Theatre); *The Music Man* (Asolo Rep); *And Then There Were None* (Triad Stage); *Camelot*, *A Night with Janis Joplin* (Capital Rep); *42nd Street* (Engeman Theater); *Smokey Joe's Café*, *A Chorus Line* (Arkansas Rep); Broadway Backwards 2012 & 2013; Atlantic Theater Company; Stages St. Louis; Maine State Music Theatre. Miss and Love you always Mom & Dad. "We're all stories in the end... just make it a good one, eh?" – The Doctor.

Kimberly Carolus,
Assistant Stage Manager

Kimberly is delighted to be in her seventh season with Milwaukee Rep. Some favorites from her time at The Rep include *In the Heights*, *The Chinese Lady*, *An Iliad*, *after all the terrible things I do* and six seasons of *A Christmas Carol*. Kimberly has also worked at Great River Shakespeare Festival, First Stage, Fulton Theatre, Riverside Theatre in the Park (Iowa City, IA) and Walt Disney World. She would like to thank her family and S for their endless love and support.

Emily Wright,
Production Assistant

Emily is a stage manager from Cleveland, Ohio. Recent credits include stage managing *The Miracle Worker* and *Girls in the Boat* at First Stage. In 2017, she completed a stage management internship at Seattle Repertory Theatre, where she worked on several productions, including *Vietgone* and *Here Lies Love*. She has also worked at Cleveland Play House as a production assistant for *Fairfield* and *How We Got On*, and has worked on run crew for many other Cleveland Play House productions. During the summer, she works as the assistant events production manager at Cain Park in Cleveland Heights, Ohio.

Krista Kanderski,
Stage Management Resident

Krista is delighted to join Milwaukee Rep as an Emerging Professional Resident this season. She is a recent graduate of Marquette University with a B.A. in Sociology and minors in Theatre Arts, Biology, and Culture, Health, & Illness. Born and raised in Milwaukee, she has worked with several companies in the area including Milwaukee Chamber Theatre, the Sharon Lynne Wilson Center for the Arts, The Constructivists, and Voices Found Repertory. Recent stage management credits include *truth: The Testimonial of Sojourner Truth*, *Shakespeare in Love*, and *Murder for Two* (Hope Summer Repertory Theatre). www.kristakanderski.com

Jonathan Hetler,
Assistant Director

Jonathan is honored to be joining Milwaukee Rep for their 66th Season! Directing credits include: *Romeo and Juliet*, *Venus in Fur*, *The Last Days of Judas Iscariot*, *Glengarry Glen Ross* (Ohio University), *Pippin* (OVST), *Career Opportunities* (The NYC Jensen Fest), *Annie Get Your Gun*, *Hairspray*, *Godspell*, *Legally Blonde* (SCCT), *Guys and Dolls*, *Beauty and the Beast* (BAHS), and the world premiere of *La Mujer Barbuda* (Seabury Quinn, Jr. Playwrights' Festival). He recently served as Assistant Director on *Next to Normal* (Tantrum Theater) under Robert Barry Fleming. Jonathan is a proud graduate of Ohio University, where he earned his MFA in Directing under Dennis Lee Delaney. He also holds his MBA and MA in Theatre, both from Regent University. He would like to give a special thanks to the most loving and supportive parents, Jim and Carol. Jonathan is an associate member of SDC. For more information, visit: hetlerj.com.

Musicians

Greg Garcia,
Trumpet

Greg maintains a busy freelance schedule playing all types of music. He has performed with Aretha Franklin, The Temptations, The Four Tops, Clyde Stubblefield, Noel Gallagher, Il Divo, The Glenn Miller Orchestra, Henry Winkler, Sonora Ponceña, Andy Montañez, Charlie Aponte, NG2 and many more. Greg is currently a member of De La Buena (Latin Jazz). He has been a featured soloist with several local orchestras and bands. Greg has performed for Milwaukee Repertory Theater and Skylight Music Theatre. In addition, Greg has written and performed music for several television and radio commercials.

Patrick Morrow,
Drums

Patrick has never seen *West Side Story*. This is his 11th show at Milwaukee Rep, 8th in the Quadracci Powerhouse. He has also played drums for The Fireside Theatre, First Stage, Milwaukee Chamber Theatre, 1st National Tours of *Million Dollar Quartet* and *Little House on the Prairie: the Musical*, and various rock & roll bands around the country.

Johnny Padilla,
Reeds

Johnny is currently leading his quartet in support of his recording "Bright Morning" on the BP Music label. "Bright Morning" is available from CD Baby and iTunes. Johnny is happy to perform again at Milwaukee Repertory Theater and has toured as a musician to Austria, the Bahamas, Canada, Colombia, England, France, Italy, Mexico, Panama, Paraguay, Peru, Uruguay and throughout the United States of America.

Michael Ritter,
Bass

As a graduate of Milwaukee Area Technical College's Music Occupations program, bassist Michael Ritter has been living and performing in Milwaukee for fifteen years after relocating from Green Bay. *West Side Story* marks his seventh production with Milwaukee Repertory Theater. In Milwaukee, he can be seen performing with Strangelander, Amanda Huff, The Paul Spencer Band, and 2019 WAMI-award winning (Best Polka Band) The November Criminals. Michael is an endorser for local companies Raezer's Edge speakers and Northern Lutherie acoustic pickups.

Eric Segnitz,
Violin

Eric is a violinist/composer/arranger who has worked with many of Milwaukee's arts groups. He's recently been appointed Co-Artistic Director of the contemporary

BIOGRAPHIES CONT.

ensemble Present Music, done much symphony, ballet, Broadway, educational and commercial work, and (very proudly) scored three plays for Milwaukee Rep: *The Mai*, *Twelfth Night* and *Anna Karenina*. He recently produced and played the Kepler Quartet's Ben Johnston string quartet cycle, which was featured in the New York Times and on NPR.

Music Theatre International, *Licenser*

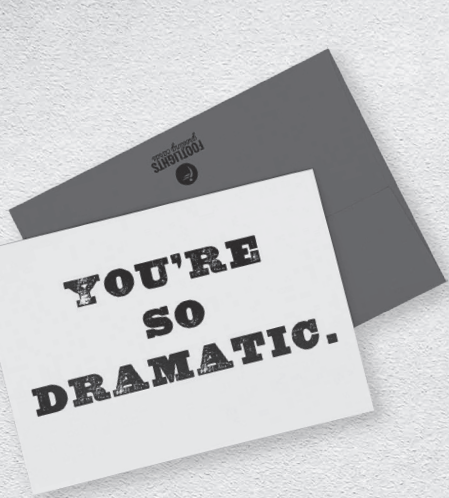
(MTI) is one of the world's leading theatrical licensing agencies, granting theatres from around the world the rights to perform the greatest selection of musicals from Broadway and beyond. Founded in 1952 by composer Frank Loesser, and orchestrator Don Walker, MTI is a driving force in advancing musical theatre as a vibrant and engaging art form. MTI works directly with the composers, lyricists and book writers of these musicals to provide official scripts, musical materials and dynamic theatrical resources to over 70,000 professional, community and school theatres in the US and in over 60 countries worldwide. MTI is particularly dedicated to educational theatre, and has created special collections to meet the needs of various types of performers and audiences. MTI's Broadway Junior™ shows are 30- and 60-minute musicals for performance by elementary and middle school-aged performers, while MTI's School Editions are musicals annotated for performance by high school students. MTI maintains its global headquarters in New York City with additional offices in London (MTI Europe) and Melbourne (MTI Australasia).



Chad Bauman,
Executive Director


Appointed Managing Director in 2013, Chad is now in his seventh Season at Milwaukee Rep. Under his guidance,

the theater has grown significantly from a \$9M organization to a \$13M organization. He's completed two capital campaigns, one to remodel and expand the Stackner Cabaret and the other to build the endowment, launch the John (Jack) D. Lewis New Play Development program, create a new *A Christmas Carol* and deepen the theater's community engagement programs. Through his efforts, the theater has been awarded UPAF's Good Steward Award four out of the last six years and became the only performing arts organization in Wisconsin with a 4 star rating from Charity Navigator. Before moving to Milwaukee, he was the Associate Executive Director at Arena Stage in Washington, DC, where he was instrumental in opening the Mead Center for American Theater, a 200,000 square feet, three theater performing arts complex dedicated to American voices and playwrights. While at Arena Stage, he worked on the Broadway transfers of *Next to Normal* (Pulitzer Prize; Tony Award), *Who's Afraid of Virginia Woolf?* (Tony Award), *Wishful Drinking* starring Carrie Fisher, *Looped* starring Valerie Harper, and John Grisham's *A Time to Kill* in addition to the world premieres of Marcus Gardley's *Every Tongue Confess* starring Phylicia Rashad and *Red Hot Patriot* starring Kathleen Turner. He has been named to Milwaukee Business Journal's Top 40 under 40 and a "Friend of the Hispanic Community" by the United Community Center. He currently serves as the President of the Milwaukee Arts Partners, Vice President of the Board of Pathways High School, Chair of the Finance Committee of ImagineMKE, and Coordinator for Equity, Diversity & Inclusion for AFS Student Exchange Programs. Bauman is a graduate of Harvard Business School's Strategic Perspectives in Non-Profit Management program and has a Master of Fine Arts in producing from the CalArts. He and his husband Justin live in Whitefish Bay and have been host parents to AFS Exchange Students from Norway and Germany.



GREETING CARDS FOR THEATRE PEOPLE

act like you care.

ACTLikeYouCare on Etsy.com 



FOOTLIGHTS
greeting cards

MILWAUKEE REPERTORY THEATER STAFF

Mark Clements
ARTISTIC DIRECTOR

Chad Bauman
EXECUTIVE DIRECTOR

ADMINISTRATION

Managing Director.....Melissa Vartanian-Mikaelian
HR Manager.....Emily Hill
Company Manager.....Josh Segal
Administrative Assistant.....Zachary Maynard
Management Assistant.....Amaris Bates
Receptionists.....Michael Evans,
Mary Muehleisen, Andrea Roades-Bruss,
Amelia Strahan

ARTISTIC

Associate Artistic Director.....May Adrales
Artistic Producer.....Laura Braza
Director of Artistic Personnel.....Frank Honts
Literary Manager.....Deanie Vallone
Manager of Artistic Training.....Lina Chambers
Artistic Administrator.....Dylan K. Sladky
Casting Resident.....Thaddeus Kaszuba

ASSOCIATE ARTISTS

Ayad Akhtar (Playwright), Lee E. Ernst (Actor), Laura Gordon (Actor/Director), Angela Iannone (Actor), Todd Edward Ivins (Scenic and Costume Designer), Dan Kazemi (Composer/Musician), Marc Kudisch (Actor), Reese Madigan (Actor), Jeff Nellis (Lighting Designer), James Pickering (Actor), Aaron Posner (Director), Todd Rosenthal (Scenic Designer), Eric Simonson (Director/Playwright), Lindsay Smiling (Actor), Deborah Staples (Actor), Nathaniel Stampley (Actor), John Tanner (Composer/Musician)

COMMUNITY ENGAGEMENT

Director of Community Engagement.....Leah Harris
Manager of Community Engagement.....Erick Ledesma
Public Allies AmeriCorps Apprentice.....Yeyliz Martinez

DEVELOPMENT

Chief Development Officer.....Chuck Rozewicz
Director of Development.....Amy Dorman
Major Gifts Officer.....Alli Engelsma-Mosser
Associate Director of Development,
Events & Stewardship.....Morgen Clarey
Associate Director of Development,
Institutional Giving.....Cassidy Skorija
Donor Database Manager.....Stephan Thomas

EDUCATION

Director of Education.....Jenny Toutant
Education Manager.....Jeffrey Mosser
Education Administrator.....Auburn Matson
Schools Program Coordinator.....Joshua Pohja
Education Resident.....Denzel Taylor

Teaching Artists.....Amira Adams, Danielle Adisi,
Thomas Adisi, Maura Atwood,
Allen Edge, Anna Evans,
Destinny Fletcher, Kaitlyn Fournier,
Kate Henderson, Van Johnson III,
Ashley Jordan, Morgan Jo Karl,
Jo Kerner, Josh Krause,
Kimberly LaBerge, Becca Marten,
Catie O'Donnell, Hope Parow,
Alayna Perry, Abbey Pitchford,
Brandite Reed, Tony Roman,
Evan Szymkowski, Kayla Tillisch,
Dontrell Williams

FINANCE

Chief Financial Officer.....Mark Wyss
Senior Accountant.....Derrick Dickinson
Accounting Associate.....James Kaplan
Accounting Associate.....Cristina Hughes

MAINTENANCE

Chief Building Engineer.....Rob Lininger
Engineers.....Todd Ross, Maurice Goodwin
Part-Time Engineers.....Yuselff Dismukes,
Ray Herrera, A.J. King

MILWAUKEE REPERTORY THEATER STAFF CONT.

MARKETING & STACKNER CABARET

Chief Marketing Officer.....Lisa Fulton
Director of MarketingCara McMullin
Marketing ManagerEliana Reed
Graphic Designers.....Eric Reda, Benton Melbourne,
Jeff Meyer
PhotographerMichael Brosilow
Marketing Intern.....Terese Radke

Sales & Audience Services

Director of Sales.....Jeremy Scott
Associate Director of SalesJaime Lacy
Group Sales Manager.....Joyce Hanin
Group Sales Manager.....Jess Shake
Audience Services Manager.....Rachel Poston
Assistant Audience Services Manager.....Joni Pierce
Audience Services Representatives.....Evoe Harris,
Zachary Dean Lachowicz, Emily Lange,
Samantha Gill, Colleen Hayes,
Jenna Lassila, Johnell Major-Wesley,
Elisabeth Markman, Olivia Mauseth,
Julie Meadows

Media

Director of Media RelationsFrances White
PR & Content Director.....Tegan Gaetano
PR AssistantLaura Ellingen
Video Producer.....Kevin Viol
PR InternCarson Roufus

House Operations

Front of House Operations Manager.....Jamie Ziolkowski
Senior House ManagerAaron Suggs
House Manager.....Maranda Moton-Weston
Stackner House ManagersBailey Kissack,
Jacob Whalen
Concierge/Gift Shop Associates.....Becky Demler,
Cionna Dorsey-Satchell, Adrienne Essex,
Maranda Moton-Weston

Stackner Cabaret Restaurant

Executive Chef.....Chris Feldmann
Operations ManagerShannon Stich
Inventory & Events ManagerClaire Rydzik
Assistant Manager.....Darian Emerson
Bar Manager.....James Passow
Cabaret Staff.....Jacob Abrams,
Michael Anderson, Tiffany Blackburn,
Kathleen Borchart, Alex Cybela,
Dylan Damkoehler, Ashley Ellingson,
Madison Geszvain, Kelly Heimann,
Cassandra Johnson, Hannah Johnson,
Troy Key, Frenisha Lathan,
Angela Livermore, Sara Longley,
James Muehleisen, Mary Muehleisen,
Olivia Passow, Amber Rydzik,
Kristin Rydzik, Daniel Soto,
Crystal Thompson, Charles Wallace,
Odell White

PRODUCTION

Director of Production.....Jared Clarkin
Associate Production ManagerKaitlyn Anderson
Assistant Production ManagerMaram Samaha

Costumes

Costume DirectorNicholas Hartman
Assistant Costume DirectorKatharine Engelen
Costume Shop Design Assistant.....Madeline Corson
Senior Draper.....Alexander B. Tecoma
Tailor.....Jef Ouwens
First HandJessica H. Jaeger
Draper.....Leslie Vaglia
Costume Crafts Artisan.....Haley Jaeger
StitchersKatie Leonard, Carol Ross
Costume Construction Resident.....Veronica Vicks
Wig Master & Makeup Supervisor.....Lara Leigh Dalbey
Stylist.....Kevin McElroy, Robert Laurence Studio
Wig Assistant.....Emily Christofferson
Wardrobe SupervisorRobert T. Sharon
Wardrobe ResidentElizabeth Gerwick
Wardrobe.....Amelia Strahan

Lighting & Video

Lighting and Video DirectorAaron Lichamer
Assistant Lighting Design ResidentOlivia DeLuca
Electrician ResidentSage Weber-Shirk

Sound

Sound DirectorJ Jumbelic

Props

Properties Director.....Jim Guy
Props Crafts ArtisanCarly Anders, Taylor Varney
Soft Props ArtisanJennifer M. Higgins
Props Carpenter/ArtisanErik Lindquist
Prop Graphics Artist.....Mindy Knoll

Scenic

Co-Technical Director.....John Houtler-McCoy
Co-Technical DirectorSean Walters
Asst. Technical DirectorDanny Halminiak
TD Apprentice.....Joseph Fry
Charge Scenic ArtistJim Medved
Lead Scenic ArtistShannon Mann
Scenic Artist.....Chrissy Piontek
Assistant Stagehand.....Caleb Woodring

Stage Management

Production Stage Manager.....Kimberly Carolus
Stage ManagersRichelle Harrington Calin,
David Hartig, Martie Barthel,
Tara Kelly, Rebecca Lindsey,
Kira Neighbors, Kate Ocker,
Brooke Redler, Sara Sheets,
Emily Wright
Stage Management Fellow.....Josh Hart
Stage Management Residents.....Abbi Hess,
Krista Kanderski

Resident Stagehands & Carpenters

Bill Burgardt, Erin Collopy, Steve Gillingham,
Rick Grilli, Kate McSorley, Aaron Siegmann,
Robert Schultz, Andrew Sours, Neil Wargolet, Jim Zinky

MILWAUKEE REPERTORY THEATER BOARD OF TRUSTEES

President

Gregory C. Oberland

Vice President, Development

Gina Peter

Vice President, Trustees and President-Elect

Catherine Robinson

Secretary

Bladen Burns

Treasurer

James Phillips

At Large

Warren Buliox

At Large

Judy Hansen

At Large

Robert H. Manegold

At Large

Linda Marcus

TRUSTEES

Ayad Akhtar

Matt Bartel

Ivor Benjamin

Wendy W. Blumenthal

Melanie Booth

Mike Carter

Jane Chernof

Marybeth Cottrill

Amy Croen

Robert H. Duffy

Molly Kubly Fritz

Andres Gonzalez

William Guc

John Halechko

Bryan House

John Hunzinger, P.E.

Tom Irgens

Lynda Johnson

Bradley J. Kalscheur

David Kundert

Phoebe Lewis

Joan Lubar

Kristine Lueders

Mark Niedfeldt, M.D.

Adam Peck

James Phelps

Joe Pickart

Karen Plunkett

Caran Quadracci

Christopher Rowland

Craig Swan

Deborah Tomczyk

Nicholas Wahl

FRIENDS OF THE REP BOARD

President

Steph O'Connor

Immediate Past President

Aileen Smith

VP External Affairs

Melita Biese

VP Fundraising

Terry Sutter

VP Internal Services

Susan Herro

Secretary

Erin Burgess

Treasurer

Jim Mergener

Members

Terry Bell

Jaelyn Jecha

Janet Kaldhusal

Drew Martin

Emily McKeown

Vic Passante

Suzanne Powell

Craig Warnecke

Karen Weinberg

Les Wilson

SUSTAINING TRUSTEES

These former Rep Trustees continue their engagement through performance attendance, a minimum annual contribution of \$250, and/or potential membership in the Limelight Legacy Society.

Richard Abdoo	Kathleen Gray	Tonen (Sara) O'Connor
Joaquin Altoro	Edward T. Hashek	Elaine N. Peterson
Patsy Aster	Jill Heavenrich	Anthony Petullo
Jay Baker	Jacqueline Herd-Barber	Gwen Plunkett
Katharine Banzhaf	Peter Hotz	Elizabeth Quadracci-Harned
James E. Braza	Janet Hume	Kristine Rappé
Joyce G. Broan	Stephen Isaacson	Dr. John E. Ridley
John Crichton	Judy Jorgensen	Allen N. Rieselbach
Danny Cunningham	J. Patrick Keyes	Joseph A. Rock
Karen Dean	John Kordsmeier	Darlene Rose
Mark J. Diliberti	Frank Krejci	Micky Sadoff
George A. Dionisopoulos	Arthur J. Laskin	Joseph Schlidt
Robert Dye	James LaVelle	James Schloemer
Norman Dyer	David J. Lubar	Thomas Scrivner
Stephen Einhorn	Marianne Lubar	Edward Seaberg
James D. Ericson	Susan Lueger	Brenda Skelton
Susan Esslinger	Audrey A. Mann	Patrick Smith
Robert Feitler	Vince Martin	Robert Taylor
David Fleck	Patti Brash McKeithan	Renee Tyson
Timothy C. Frautschi	Venora McKinney	Stephen VanderBloemen
Ann Gallagher	Sandra McSweeney	W. Kent Velde
Patrick Gallagher	Richard Meeusen	Karin Werner
Katherine M. Gehl	Donna Meyer	Stacy Williams
Lloyd A. Gerlach	Douglas Mickelson	Andrew Ziegler
Cecilia Gilbert	Dwight L. Morgan	
Anne Gimbel	Abigail J. Nash	

PRESIDENTS' COUNCIL

James Braza	Larry Jost	Patricia Brash McKeithan
Joyce Broan	John L. Kordsmeier	Donna Meyer
Lloyd A. Gerlach	Frank Frejci	Gregory C. Oberland
Judy Hansen	Susan A. Lueger	Edward Seaberg
Jacqueline Herd-Barber	Robert H. Manegold	W. Kent Velde
	Vincent L. Martin	

LIMELIGHT LEGACY SOCIETY MEMBERS

The Limelight Legacy Society is a group of visionary donors who support Milwaukee Rep through a planned gift.

New members as of May 1, 2019 are in bold.

If you want to learn more about membership opportunities and benefits, please contact Alii Engelsma-Mosser at 414-290-5366 or Aengelsma-mosser@milwaukeeerep.com.

George R. Affeldt, Jr.	Deborah Fugenschuh and Mark Hinchey	Vivian Moller
Sharee Allain and David Schertz	Bill and Susanne Gay	Bob and Jan Montgomery
Gerald and Gail Baccetti	Jeff Glock and Jane Reilly	Charles and Barbara Murphy
Bob Balderson	Sara L. Grotenrath and James Pech	Greg and Rhonda Oberland
John and Carol Bannen	Delphine Gurzynski	Karen Ellen Owens
Katharine Banzhaf	Richard and Susan Hackl	Elaine N. Peterson
Adam and Megan Bauman	Sybille Hamilton	Gwen Plunkett
Chad Bauman and Justin Dunleavy	Arlene Hansen	Ronald and Barbara Poe
Mark and Victoria Benskin	Judy Hansen	Milan Racic
Mark Biehl	Leland Hansen	David and Pat Rierson
Ralph Bielenberg	Edward Hashek and John Jors	Sara Risley
Melita Biese	Dr. Lawrence Howards	Gayle Rosemann and Paul McElwee
Joyce G. Broan	Janet Kellogg Hume	Ed Seaberg and Patrick Smith
Mark E. Carstensen and Mary M. Horton	Cathryn Jakicic	Roger and Margery Senn
Jane and Stephen Chernof	Deb and Peter Johnson	Brenda Skelton and Jim Bendtssen
Mark Clements and Kelley Faulkner	Bradley J. Kalscheur	Aileen M. Smith
Chris and Judi Collins	Richard and Diane Kane	Terry R. Sutter
Diane Dalton	Margaret Knitter	John and Kine Torinus
Randall Daut and Patricia Ryan	Christine Krause	Harry and Mary Beth Van Groll
Susan and Bill Dawicke	David and Camille Kundert	Judy Van Tilly
Robert and Karen Dean	Sandra L. Laedtke	Paul Vandeveld
Carol Z. Dolphin	James and Mary LaVelle	Kent and Marcia Velde
Rosemarie Eierman	Mr. and Mrs. Llewellyn E. Licht	Greg and Jodi Wait
Roma Eiseman	Robert and Susan Lueger	David and Cheryl Walker
Don Ellingsen	Carol and Rob Manegold	Barbara Wesener
Susan and Gee Esslinger	Jim and Sally Mergener	Stacy and Blair Williams
David and Janet Fleck	Anthony and Donna Meyer	Paul and Sandy Wysocki

2019/20 DONORS

The following list represents organizations and individuals who have made a cumulative financial contribution to our Annual Operating Budget of \$100 or more from June 10, 2018 – August 10, 2019.

For a complete list of all our supporters, please visit www.MilwaukeeRep.com.

Corporation, Foundation and Government Giving

\$1 million +

United Performing Arts Fund (UPAF)

\$100,000 – \$999,999

The Lynde and Harry Bradley Foundation
Herzfeld Foundation
Shubert Foundation

\$50,000 – \$99,999

CAMPAC
Four-Four Foundation
Milwaukee Public Schools
Northwestern Mutual
Rockwell Automation
Wells Fargo

\$25,000 – \$49,999

Bader Philanthropies
Patty and Jay Baker Foundation
BMO
The Friends of The Rep
Greater Milwaukee Foundation
Husch Blackwell LLP
Johnson Controls
Kohl's Corporation
National Endowment for the Arts

\$10,000 – \$24,999

Associated Bank
Demmer Charitable Trust
Fiduciary Management
Godfrey & Kahn S. C.
Harley-Davidson Foundation
Frieda & William Hunt Memorial Trust
The Charles E. Kubly Foundation
The Marcus Corporation
PNC
Potawatomi Hotel & Casino
Rogers Behavioral Health
Studio Gear
We Energies Foundation
Wisconsin Arts Board

\$1,000 – \$9,999

ANON Charitable Trust
Baird
Burke Properties
CG Schmidt, Inc.
Chase Family Foundation
Cream City Foundation
Eppstein Uhen Architects
Ernst & Young, LLP
Ralph Evinrude Foundation
Foley & Lardner

The Gardner Foundation
William N. and Janice V. Godfrey Family Foundation
Greater Milwaukee Association of Realtors Youth
Foundation
Evan and Marion Helfaer Foundation
Dorothy Inbusch Foundation
KPMG
Camille A. Lonstorf Trust
Marquette Associates, Inc.
Michael Best
Milwaukee Arts Board
Charles D. Ortgiesen Foundation
Jane Bradley Pettit Foundation
Phoenix Investors
PricewaterhouseCoopers
Quarles & Brady LLP
Reinhart Boerner Van Deuren S.C.
Spano Pratt Executive Search
Townsend Foundation
The VanderBloemen Group LLC
West Bend Mutual Insurance Company

\$500-\$999

RSM US LLP

\$250 – \$499

Actors' Equity Foundation, Inc.
The Brookby Foundation

Participants in the Matching Gift Program

AmazonSmile
American Family Insurance Dreams Foundation
American Transmission Company LLC
Baird
Eaton Corporation
Edward Jones
ExxonMobil Foundation
GE Foundation
GE Healthcare
Greater Milwaukee Foundation
Bucyrus Foundation, Inc.
IBM Corporation
Illinois Tool Works Inc.
Johnson Controls Foundation
JPMorgan Chase Foundation
KPMG
Pfizer Foundation Matching Gifts Program
Reader's Digest Foundation
Rockwell International Corp. Trust Matching Gift
Program
Target
Verizon Foundation
We Energies Foundation
Wells Fargo

Milwaukee Rep welcomes gifts of securities and stocks. If you plan to make such a gift, please notify the Development Department at 414-290-0717 so we can properly credit and acknowledge your generosity.

2019/20 DONORS

Individual Giving

Luminary (\$100,000+)

Anonymous

Visionary (\$50,000-\$99,999)

Bladen and Julia Burns
Carol and Rob Manegold
Sally Manegold
Plunkett Family Foundation
Joel and Caran Quadracci
Christine Symchych and Jim McNulty
Julia and David Uihlein

Artistic Producer (\$25,000-\$49,999)

Anonymous (2)
Greg and Rhonda Oberland
Gina and Eric Peter
Catherine and Buddy Robinson
Gayle Rosemann and Paul McElwee
Craig and Mara Swan

Producer (\$10,000-\$24,999)

Anonymous (2)
Gretta Assaly
Michael Barber and Jacqueline Herd-Barber
Richard and Jo Ann Beightol
Mark and Karen Bitzan
Melanie and Steve Booth
Robert C. Burrell
Croen Foundation, Inc.
Tom and Molly Duffey
Suzy B. Ettinger Foundation
Judy Hansen
Keyes Family
Connie and John Kordsmeier
Phoebe Lewis
David and Madeleine Lubar
John and Linda Mellowes
Milan Racic
Ed Seaberg and Patrick Smith
Carlene and Andrew Ziegler

Director (\$5,000-\$9,999)

Anonymous
Adlon Partnership
Isabel Bader
Bob Balderson
Kellen and Matt Bartel
Ivor and Carol Benjamin
Wendy and Warren Blumenthal
Curt and Sue Culver
Thomas J. and Deborah W. Degnan
Margaret Dethloff and Terri Zeh
Dr. Eric A. Durant
Four-Four Foundation
Molly and David Fritz
Patrick D. Gallagher
Andres Gonzalez
Peter and Beth Gottsacker
Greater Milwaukee Foundation
Anthony and Andrea Bryant Family Fund
Norman and Lucy Cohn Family Fund
Judith A. Keyes Family Fund
Donna and Tony Meyer Fund
John and Sue Harris
Bryan and Rebecca House
John and Marci Hunzinger
Jewish Community Foundation
Stephen and Jane Chernof Donor
Advised Fund
Lynda Johnson
Judy and Gary Jorgensen
Ruth DeYoung Kohler
David and Camille Kundert
Joan Lubar and John Crouch

Kristine and Wayne Lueders
Robert and Susan Lueger
Kevin and Roseann Lyons Charitable Fund
Vince and Jan Martin
Abigail and David Nash
Drs. Mark and Jennifer Niedfeldt
Adam and Laura Peck
Jim Phillips
Joe and Katie Pickart
William and Linda Priebe
Paul and Patricia Purcell
Chris Rowland
Curtis and Deborah Tomczyk
David and Cheryl Walker
Teddy and Karin Werner
Stacy and Blair Williams

Designer (\$2,500-\$4,999)

Anonymous
Fran and Lowell Adams
Richard and Sara Aster
Gary and Mithra Ballesteros
Katharine Banzhaf
Chad Bauman and Justin Dunleavy
Donna and Donald Baumgartner
Warren Buliox
Elaine Burke
Timothy and Kathleen Carr
James Cauley and Brenda Andrews
Mark Clements and Kelley Faulkner
Guy and Kathy Crane
Sue D'Alessio
Jeff Drope and Victoria Teerlink
Kirt and Dixie Fiegel
James and Ellen Flesch
Don Fraker and Maja Jurisic
Karen and Gardner Friedlander
Rob Gardenier and Lori Morse
Franklyn and M. Anne Gimbel
Clark and Lauri Green
Richard Grunke and William Colseth
John J. Halechko and Marc Grassli
Leland Hansen
Carla H. Hay
Katie Heil
Peter and Linda Hotz
Henry and Margery Howard
Kenton and Janet Hovenstine
Jewish Community Foundation
Micaela Levine and Tom St. John Donor
Advised Fund
Mike and Marie Johnson
Richard and Tracey Klein Family Charitable
Trust
Mark and Jenny Kopetsky
Marina and Frank Krejci
David and Jean Lauer
Ray and Dawne Manista
Jeannie Mantz
Daniel J. and Constance P. McCarty
Merle and Sandra McDonald
Patti McKeithan
Robert and Susan Mikulay
Vivian Moller
Keith and Jane Nosbusch
Elaine N. Peterson
James and Morgan Phelps
Fred Pike and Cecilia Taylor
David and Roberta Remstad
Allen and Pat Rieselbach
Meredith and Thomas Scrivner
Sue and Bud Selig
John and Kristin Sheehan
Clark and Diane Slipher

Dr. Mark and Nancy Smuckler
Jud Snyder
Nita Soref
Brian Stark and Debra Altshul-Stark
Mike and Peg Uihlein
Judy Van Till
Kent and Marcia Velde
Wilfred Wollner
Joe and Mary Ann Zompa

Playwright (\$1,500-\$2,499)

Anonymous (2)
Helen Ambuel
Robert and Peggy Arfman
Amy Argall
Bob Barthel
Richard and Diana Barthel
Mark Biehl
William and Barbara Boles
Cheri and Tom Briscoe
Randal and Mary Lynn Brotherhood
Bruce and Marsha Camitta
Chris and Judi Collins
Jim and Marybeth Cottrill
Antony and Nikki D'Cruz
Sandy and George Dionisopoulos
Jim Ericson
Susan and Gee Esslinger
Jeff and Kelly Fitzsimmons
Peter Foote and Robin Wilson
Rick and Liz Gebhardt
Greater Milwaukee Foundation
Margaret Hemingway Wells Fund
Susan and Howard Hopwood Fund
JB Fund
Delphine Gurzynski
Laurie Hazzard
Dave and Judy Hecker
Patricia Herro
Steven and Karen Huser
Jason and Hannah Jahn
Maureen Kania Swokowski
Kristine Kile
Paul and Amy Kolo
Robert and Gail Korb
Christine Krause
Steven Liszewski
Dr. Brent and Susan Martin
Teresa and David May
Jim and Sally Mergener
Bob and Jan Montgomery
The Mosher Family Foundation
Chris and Nirveh Neuman
Dr. David Paris
Scott Patulski and Kristine Krause
Alan and Carol Pohl
Dr. and Mrs. Dean Pratt
Jonas and Sylvia Prising
Mrs. Susan B. Purtell
Jim and Lys Reiskytl
Susan Riedel
Paul and Lynn Rix
Richard and Karen Rodgers
John and Debbie Roesner
Patrick W. Schmidt and Dewey J. Caton
Richard and Mary Schnell
James and Elaine Sweet
Elizabeth Vaeth
Dr. and Mrs. Paul Weisman
Eric and Sarah Whyte

Stage Manager (\$1,000-\$1,499)

Anonymous (3)
Matteo Alioto

2019/20 DONORS

Joaquin Altoro and Claudia Villarreal
David and Carol Anderson
Astor Street Foundation
Brian and Rebekah Barsch
Jackie Behnke
Cristin and Jonathan Bock
Larry Bonney
Frank and Carl Briscoe
B. Lauren and Margaret Charous
Steve and Nancy Check
Beverly Colton
Russell and Sandra Dagon
Carol Z. Dolphin
Bob and Teri Duffy
Gary Fait
Feitler Family Fund
Thomas Fladeland
Thomas and Marcia Flanagan
Chris and Rory Foley
Jane M. Foster
Jack Gebhardt and Deborah McKeithan-
Gebhardt
Cecilia Gilbert
Jason and Diep Graham
Greater Milwaukee Foundation
Joan and Peter W. Bruce Fund
Bernadine and Stephen Graff Fund
Journal Foundation
Carmen Haberman
Glen and Claire Hackmann
Edward Hashek and John Jors
Ralph and Bonnie Hensel
David and Darcy Hinz
Ron Hofer and Kathleen Gray
Jewish Community Foundation
Pam Kriger Donor Advised Fund
Sherwood E. and Libby S. Temkin Donor
Advised Fund
Deb and Peter Johnson
Dr. Jack and Myrna Kaufman
John and Bronwen Knappenberger
Don and Barb Koehler
Lilane Koehn Mace
Anthony and Susan Krausen
Nancy and Arthur Laskin
Graham Lewis
Dr. Paul Loewenstein and Jody Kaufman
Loewenstein
Doug and Vicky McManus
Barbara McMath
Pamela Meyer
Lynn Minella
Don and Renee Mondano
John O'Hare
Alan and Kathleen Olsen
David Olson and Claire Fritsche
Joseph R. Pabst Charitable Fund
Larry and Teri Pavelec
Don Petersen and Corintha Van Orsdo
Carol Porth
Brian and Amber Regan
Ronald and Micky Sadoff
Wayne and Christine Sage
Pat Schlick
Jim and Andrea Schloemer
Richard and Jean Schmalfeld
Thomas and Lori Schuster
Paul and Christy Schwan
Linda L. Sell, MD
Dianne Spector
A.J. Star
Emily and Joseph Steiner
Kathy Thornton-Bias
Harry and Mary Beth Van Groll
Diane Kippenhan-Vollmer and James
Vollmer

Richard and Lynn Wesolek
Jay and Laura Wigdale

Principal Actor (\$500-\$999)

Anonymous (7)
Richard and Joan Abdo
Mike and Tia Abuls
Jim and Terri Alioto
Sharee Allain and David Schertz
Tom and Kathy Alpren
Dorothy Anderson
Keith and Paula Anderson
Michael and Rita Becker
Scott Beightol and Desiree Erickson
Beightol
Terry Bell
James and Andrea Bennett
Bill and Betsie Berrien
Geoffrey and Karen Bilda
Greg Bird
John Bjork, MD and Colleen Cornelius
Bob Blitzke and Jane Grogan
James Boerner
Robert and Sharon Brenner
Bradley Brin and Glenna Cose
James Brown and Ann Brophy
Bruce and Joan Butterfield
Daniel and Allison Byrne
Phil and Anne Callen
Bruce and Kathi Campbell
Carolyn Campion
Jose Carlino
Kathleen Cepelka
Susan Cerletty
Mark and Terri Chelmowski
Walt and Aleta Chossek
Joseph and Julie Chusid
Jay and Roxanne Ciatti
Adam and Jennifer Ciralsky
Bunny and Ron Cohen
Mary and James M. Connelly
David and Janice Cronin
Matt Cudney
Christine Culver
Danny and Jolinda Cunningham
Jeff Davis and Rachel Schneider
Susan Dawicke
Robert and Karen Dean
Mary Paula Dix
Doug Doers
Thomas and Mary Domer
John and John Donovan
Tom Dorney and Sylvia Pratt
Tom and Bette Drought
The Duback Family Charitable Fund
Michael and Janet Durham
William E. Eastham
Paul and Paula Eberle
Stewart Edwards and Joanne Danforth
Jan Effinger
Richard and Patricia Ehlert
Dale and Mary Erickson
Evelyn Ericson
Rick and Karen Esenberg
Robert and Kristin Fewel
Kenneth Finkel and Jane Delzer
Renaee and Christopher Flowers
Kari and Bill Foote
Kurt and Kay Frederick
Allan F. and Mary Ellen Froehlich
Richard S. and Ann L. Gallagher
Bill and Susanne Gay
Rod and Linda Gehrig
Tony and Mary Gentine
Bruzoe and Nancy Ghandhi
Jon and Nancy Gilmore

Adam and Carole Glass
Henry Goetzinger
Larry and Geli Golopol
Frank and Renee Gonzales
Dr. Burton E. Goodman and Harriet
Bocksenaum
Greater Milwaukee Foundation
Anonymous
Donald and Barbara Abert Fund
Bechtold Family Fund
Nancy E. Hack Fund
Hepburn "Bootstrap" Foundation
Schoonenberg Family Foundation Fund
Paul and Christine Grebe
James Green
Thomas and Mary Grossman
Honorable Michael and Barbara Guolee
Steve and Karen Guy
Charles and Elizabeth Haas
Paul and Gloria Halverson
Amy Harker-Murray
Dale and Sara Harmelink
Thomas Harty and Sharon Safford Harty
John Hayden and Grace McBain-Haydon
John Healy and Mary L. Tobin
Robert and Amy Heinrich
Erik Hekkers
Mary Beth Holloway
Kevin and Debra Hood
Dante and Jennifer Houston
Stephen and Roberta Isaacson
Valerie Jablonka
A. W. Janikowsky
Jewish Community Foundation
Eileen and Howard Dubner Donor
Advised Fund
Dorene and Phil Paley Donor Advised
Fund
Dan and Pat Johansen
Mary Johnson
John Jump
Evan and Paula Kaiser
Richard and Diane Kane
Tom Karakis and Colleen Lese
Debra Katz
Judith Katz
Allan Kauth
Raymond and Susan Kehm
Michael and Christy Kellman
Bing and Mary Lou Kennedy
Sang and Jiyeon Kim
John and Debbie Kissinger
Klassen Remodeling
Glenn Kleiman and Gisela Ternier
Margaret Knight
Robert and Naomi Knoll
Vincent and Cathy Kotnik
Henry Krokosky and Char Schall-Krokosky
Bruce Krueger and Margaret Herrick
Sandy Laedtke
Eric Larson and Susan Lewis
William and Judith Laste
Kaye and Prakash Laud
Perry Lieuallen and Darcy McManus
Dawn Lindsey
Richard and Roberta London
Franklin Loo and Sally Long
Robert and Mary Loots
Paul and Patty Lucca
James and Ann Maher
Linda and Greg Marcus
Lee Marquardt
Andy and Janet Martin
Joseph Masterson
Mateo Family Trust
Debesh and Linda Mazumdar

2019/20 DONORS

Maureen and Michael McCabe
Bernard and Susan McCartan
Tom and Renee McCutcheon
Dan and Jill McElroy
Jere McGaffey
Daryl and Rita Melzer
Steve and Ann Merkow
Howard and Sara Miller
Gregory and Susan Milleville
Claudia and Joseph Moll
Mark Molot and Jequitta Kain Molot
Gene and Linda Moore
William and Patricia Moren
Barbara and Charles Murphy
Jerry and Lori Murphy
Jim and Betty Jo Nelsen
The Nelson-Zirzow Fund
David and Jaclyn Ness
John and Jane Niebler
Paul and Kathrine Noran
Chandra and Chris Novoa
Chris and Anne Noyes
Andy Nunemaker
Sarah Oberhofer
Thomas and Elaine Pagedas
John and Carol Pauly
Matthew and Laurie Piette
Bruce and Candy Pindyck
Ronald Putzer
Edwin and Beverly Puzia
Phil and Lynell Raiche
Thomas Raimann and Mick Dwyer
Jim and Kris Rappé
Toby Recht
Robert and Pamela Reily
Donald Riegelman and Kathryn Rouse
Roger Ritzow
Daniel and Anna Robbins
Curt and Patty Robinson
Peter and Connie Roop
Darlene and Willie Rose
Rhoda Runzheimer
James Sanger and Mary Newton
Richard A. Sauts Jr. and Diane K. O'Connor
Eric Schluter
Dean and Diane Schmelzer
Judy and Tom Schmid
Bob and Carol Schmidt
Richard and Nicole Schmidt
Don and Laura Schmitt
Tom and Lois Schneider
James and Kathi Scholler
Ted Schulte
Robert Schweers
Allison Scrivner
Hallie Sebena
Scott and Dulcie Shoener
Joseph Silvers and Amy Rabideau Silvers
Patrick and Janet Sinks
Aileen M. Smith
Jon and Kris Sohn
Joan Spector
Alec Stapleton
Charles and Jennifer Stearns
Judith A. Steinke
Angela and Jayson Stemo
Robert Storm and Catherine Shaw
Gregory Strowig
Loring M. Talsky
Thomas Tang
James and Leigh Ann Tidey
Catherine Tikkanen
Sara Toenes
Gile and Linda Tojek
Renee and Joseph Tyson
Deanna Uradnick

Nicki Usinger
Richard Uspel
Sheryl Van Haren
Dave and Katy Vetta
Greg and Carla Von Roenn
Greg and Jodi Wait
Paul Wanat
Jack and Margaret Ward
Robert and Kathleen Warner
Ruth Way
Neal and Cathy Wegner
Sue Wells
Alan and Kathy Werth
Louisa Ann Wertzler
Alberta Whitaker
Susan Wiegner
Frank and Vera Wilson
Norm and Prati Wojtal
Robert L. Woodbury
Pete and Penny Woodcock
Scott and Jean Wrobbel
Mike and Nancy Yttre
Mark and Evonne Zaleski
Gertrude Zauner
Paul and Katherine Zavada
Eve Joan Zucker

Supporting Actor (\$250-\$499)

Anonymous (13)
Selmalyin Allison
Nancy Amacher
Val and Bonne Anderson
Bob and Kathleen Anger
Barbara Armstrong
Jeff Arp
Laurie Asbeck-Hickman
James and Kathleen Awe
Richard and Amy Balge
John and Carol Bannen
Paul and Elizabeth Bargren
Barbara Baron
Jim and Nora Barry
Martha Barry
Mike and Ellen Bartel
Carla and Burt Bartlett
Jane Batten
Doris Bauer
Charles and Nancy Bauer-King
Thomas Bauldry and Thomas Czisny
Kevin Baumgart
Paul and Lianne Becht
Nina Beck
Donald Becker
Natalie Beckwith
Monica Beitzel
Mary and Dan Benedum
Gerald and Sydell Bergtrom
Arthur and Carolee Beutler
David Beyer
Ralph Bielenberg
Big Art
Marsi Black
Barry Blackwell and Kathleen Eilers
Edward and Amy Blumenthal
Mike and Mary Bohren
Paul Bosanac
Scott and Sandy Botcher
Gene Braaksma and Rebecca Bardwell
John and Sandra Braun
Troy Brett
Liz and Larry Brewer
Carla Brockman
Carol Brown
Tom and Joanne Brown
Building Waters Inc.
Chris Burgener and Linda Loke

Shannon and Jennifer Burns
Susan Burns
Peter and Laurie Byrne
Lewis Charles Cadkin and Susan Elizabeth
Cadkin Living Trust
Trish Calvy
Sally Castle
Thomas and Gisela Chelimsky
John and Marilyn Christiansen
Patricia and Secily Clason
Jeffrey Coleman
Rochelle Connor
Rev. David E. Cooper
Marilyn Corlew
Donald and Suzanne Cornell
Constance Crooks
Diane Dalton
Mark and Julie Darnieder
Larry and Eileen Dean
Tom DeChant
Laura DeGolier
Shane and Kerj Delsman
Jane Dennis
Kurt Deprey and Michael Murray
Nancy Desjardins
Lloyd Dickinson and Kristin Bergstrom
Dennis Dirck
Candance Doerr-Stevens
Bridget Donahue
Henry Duffrin
Kathie and Bob Dye
Sally Edgett
Eugene and Jean Eisman
Nelson Ellis
Dr. Dennis and Cecile Engel
Christina Englund
Bradley and Abigail Engstrand
Paul and Karen Erickson
Emily Errthum
Bryan and Lyn Eskra
Nathan and Susan Fair
Lisa Feldmeier
Jeannie and Noah Fenceroy
Christine L. Fenner
Dr. Michael and Terry Fetherston
Alexis Fielek
Michael Fielek
Mary Lou Findley
Mary Teresa Flaherty
Janet and David Fleck
Eric and Bridget Fonstad
Bruce and Kathy Ford
Natalie Frankel
William and Joy Franson
Tim and Sue Frautschi
John and Jane Frederick
Robert Freiboth
Gerald and Patricia Freitas
George Frick
Stephen and Gail Froehlich
Thomas and Deborah Gannon
Ralph and Paula Garcia
Katherine M. Gehl
Tracy Geimer
Thomas Giese
Jeff Glock and Jane Reilly
Lawrence and Hannah Goodman
Michael Goodspeed and Gail Waring
Dale and Mary Graves
Greater Green Bay Community Foundation
Wiers Family Fund
Greater Milwaukee Foundation
Mary and Charles Kamps Fund
John and Tamecia Greene
Jim Gremminger
Dan and Sue Haislmaier

2019/20 DONORS

Tom and Deirdre Halat
Arlene Hansen
Dr. James and Mary Ann Hanson
Rebecca Harms
Cliff and Susan Hartmann
Jim and Marge Hartwig
Jill Heavenrich
Hilda Heglund
Thomas and Catherine Heinen
Richard and Jean Herman
Drs. Daniel and Nancy Herrell
Earl and Eugenie Hildebrandt
Alan and Jean Hilgeman
Donald Hill
Ruth and John Hoenick
Hugh and Robin Hoffman
Andrew and Paula Holman
Gary Holmes and Susan Holding
Hal Horneffer
Michael and Calley Hostad
Megann Hubbard
George and Valerie Huhnke
Richard and Esther Huiting
Peter and Ashley Hundt
Myra Huth
William and Karen Irwin
Michael Isaacson
Roy H. Jablonka
Edward and Barbara Jacob
Donald Jarchow
Jewish Community Foundation
Joan and Michael Friedman Donor
Advised Fund
Bill and Idy Goodman Family Donor
Advised Fund
Lois Malawsky Donor Advised Fund
Dorothy and Merton Rotter Donor
Advised Fund
Bryon and Gwen Johnson
David and Mel Johnson
Roy and Kathleen Johnson
Eric and Stacy Jossart
John and Coral Kaczynski
Marlene Kagen
Chuck Kahn and Patti Keating Kahn
Wendy Kamerling
Mark and Ginny Kannenberg
Jean Kapolnek
Timothy and Mary Keane
Tom and Judy Keenan
Ellen Kellen
Marilyn Kennedy
Robert and Judy Kettler
Valeria Key
Scott Kindness
Russell and Rose Marie Knoth
Martin Kohler
Kurt and Jean Kozma
Terry and Mary Krall
Lee and Bonita Kraus
John and Diane Kretsch
John and Susan Krezoski
Stanley Kritzik
Kevin Kruschke
Harvey Kurtz and Yvonne Larne
Barbara Kutchera
Janet LaBrie
Tom and Sally Ladky
Gary and Doris Langbruttig
William and Jeanne Lange
Dan and Kathy Larsen
Dennis and Jeanne Larsen
Steen and Janice Larsen
Jim and Teri Larson
Jason and Kristy Lavann
Eugene and Gwen Lavinn
Patrick Layden
Larry and Mary LeBlanc
John and LaVonne Leonard
Justine Leonard
Lloyd and Sheri Levin
Mark and Cindy Levy
Rita Lewenauer
Dr. James and Jacqueline Lichty
David and Mary Ann Lillich
Mary Lillydahl
Dennis and Theresa Lowder
Richard and Sherry Lundell
David Lundin and Agnes Lun
Scott and Joyce Lutzow
John and Audrey Makowski
Jack and Joan Malin
Benjamin and Ellen Mandelman
Louis and Edythe Manza
Jacqueline Margis
Robert Marold and Diane Boldt
Jewel Martin
Dan and Ada McAdams
Katherine McCombe
Alan and Nancy Meier
Dean Meier
Robert Meldman
Charles Mesech
Jill Meyers
Douglas and Annette Mickelson
Dennis and Judith Milbrath
Jay Miller and Donna Faw
Kenneth Miller and Margaret Blodgett
Robert and Jane Mitchell
Arthur Moats
Debra Moore
Bernie Mrazik and Jeanie Jerde
Emily Mueller
Andreas Mueller-Blecking
David Munoz
Jim and Mary Fran Murray
Jack and Lucia Murtaugh
Sue Nelsen
Karen Nelson
Vern and Kay Nelson
Joel and Donna Nettesheim
Jerry Niemiec
Paul and Carolyn Noelke
Bob and Julie Norman
Joe Nutt
Tonen O'Connor
Herbert and Karen Oechler
Marcia M. Olen
Ed Olson and Linda Caldart-Olson
Jim and Claire Olson
Steve and Heide Olson
Eric Oquist and Heather Deaton
Mark and Laurie Pasch
Barry and Trish Paul
Frank and Joanne Paulus
Mari Pavleje
Sandra Pendell
Debby Penzkover
Matthew Perta
Mark and Julie Petri
Marlyene Pfeiffer
Kristine Phillips
Jerry and Jill Polachek
Frank and Melanie Popa
Susan Porter
Earl Potter
Richard Poulson and Janet Bean
Les and Wendy Proctor
Donald and Judith Rafenstein
Donald and Mary Ellen Ralfs
Patrick and Noreen Regan
Suzann Reichley
Patrick and Peggy Remfrey
Dr. John and Theresa Ridley
William and Carol Roche
Joseph A. and Sarah Rock
Mary Roepeke
Brigid Rooney
Barry Rosenblatt
Daniel and Carolyn Roskom
Bob Rothacker and Connie Gavin
Donald and Edith Rouse
Gerard and Susan Ruedinger
Peter and Mary Runde
Catherine Rynkiewicz
Mark Sabin and Mary Moberg Sabin
Tom and Judy Saeger
Mark Sauter
Mike and Jan Schade
Ruth Schauer
The Wilbert and Genevieve Schauer
Foundation
Roger and Cindy Schaus
Elliott Schnackenberg
Nancy Schneiders
George Schroeder and Mary Arenberg
Barry Schulman and Cheryl Wolf-Schulman
Beverly Schwabe
Neal and Jeanne Seidler
Dr. Robert and Caryl Sewell
Barbara Shreves
Jason and Kristin Shuler
Mark and Bonnie Siegel
Sandi Siegel
Kim Sienko
Robert and Cindy Simon
David Simpson and Debbie Schmidt
Leslie and Marcia Singer
Gail Sklodowska
Jean Smith
Katherine Smith
Muriel Smith-Gross
Dr. Marilyn Smits
Margaret Sohm
Joyce and Albert Solochek
Barbra Kohl-Spiro and Hertzl Spiro
John and Mary Splude
James and Kathleen Springer
Lorand and Cindy Spyers-Duran
Carol Sroka
Steven Stall and Jenny Paris-Stall
Jerrel and Judith Stanley
Randel Steele and Margaret Gonzales
John Stern
Gillian Stewart
Michael and Linda Stolz
Bill and Judith Stone
George and Eileen Stone
Richard and Susan Strait
Dave and Kathy Sturgill
Marjorie Sutton
Geoffrey Swain
The Syburg Family
Barry and Sue Szymanski
Thomas and Katharine Tanty
Robert Taylor
John Teevan
William Thiemann
Dean and Kathy Thome
Lynn Tolcott
Mark and Christina Toth
Thomas and Patricia Towers
Charles Trainer and Anne Booth
Andrea Turke
Natalie Verette
Brendan Vierk
Bernadette Vitola
Vincent and Sarah Vogelsang

2019/20 DONORS

Richard Waak
Benjamin and Rachel Wagner
Dan and Heidi Walker
Nina Walker
Owen and Karen Walsh
Frank and Milena Walter
Sargit Warriner
Francis and Mary Wasielewski
Nancy Blanchard Watts
Mary Wegener
Lance Weinhardt
Marie Weiss
Mark and Anne Weitenbeck
Donald and Melody Weyer
Caroline Wieman
Jim and Libby Wigdale
Tom and Marlys Williams
Jinny and Les Wilson
Warren Windau and Mary Loeffel
William and Anne Wingate
Gene and Carmen Witt
Dianna Woelfle
Lee Wolcott
Zac Wolff and Sara Sackmaster
Dan and Chris Woods
Ross and Sandy Workman
Lori Wucherer
Richard and Nora Yanchar
James Zaiser
Joan M. Zeiger
Sharon Ziegler

Ensemble (\$100-\$249)
Anonymous (53)
Marlene Adland
Jim Adyniec
Eugenia Afinoguenova
Greg and Ann Akin
Drs. Robert Amssen and Jeanne Williams
Jill and Bruce Anderson
Julie Anding and Lisa Kornetsky
Steve and Joy Appel
Robert and Fran Aring
Sandra Arndt
Robert Ater
Charles and Marilyn Averbek
Lori Averbek
Jayne Ayers
Herb and Ginger Ayres
Marge Babcock
Jerry and Gail Baccetti
Tim Bachhuber and Geri Feucht
Joseph and Frances Bachman
Mark Backe
Jeff and Maureen Badding
Jean J. Baesemann
Jessica Bailey
Dennis and LuAnn Baker
Patricia Bakula
Phil Balcerowski
Mary Balducci
Peter and Karen Balistreri
Thomas Ballon
Jody Balzer
Peter Balzer
Elisabeth Banner
Michael Bannon
Anthony and Charlene Bareta
Bruce and Maggie Barr
Tom and Kristine Barrett
Richard and Gerene Bartol
Donna Bartolone
Joseph Bartz and Kathleen Reese
Elizabeth Bass
James and Sharol Bassett
Maureen Baumann

Charles Baumgardner and Susan Jans
Michael Bean
Dorothy Beck
Jack and Ruth Beck
Richard Becker
Diane Beckley
Craig and Elizabeth Beecher
James and Pam Behrend
Clark and Linda Beier
Darryl and Nancy Bell
Peter Bender
Michael and Susan Benes
David Benner and Dianne Benjamin
Richard Bergman
Eric and Sherrie Berndt
Clyde Bingman
David and Eva Bishop
Harriet Black
Robert and Ellen Bladorn
Mort and Nelda Blatt
Kenneth Blochowiak
Carol Block
David and Sherry Blumberg
Tom Bode
Michael Boehmer
Glendon and Susanne Bogdon
Julie Bohnhoff-Overby
Janet Boles
Georgia Bond
Jean Boray
Darold and Cheryl Borree
Marie Bosetti and Tom Ehlen
Dana and Heather Bott
Diane Bourquin
Joan Braun
Debra Brenegan
Andy and Lisa Bro
Anne Brower
John and Susan Brown
John and Caryl Brubaker
Matt and Tressa Bruggink
Paul and Monica Bryant
Daniel and Nancy Buhr
Anthony Burant
Mary Burke
Eric and Jayne Butlein
Gerardo and Cynthia Caballero
Christopher and Kristine Cameron
Eileen Campbell
Guy and DeAnn Campbell
Marie Campos
Barbara Cannell
Thomas and Rhonda Cardella
Mark and Linda Carlson
Susan Carneol
Darius Carr
Dr. Curtis and Jean Carter
Martha Carter
Sarah Carter
Ethan Cash
Kim and Judy Casper
Rosanna Casper
Bonnie Cass
Gregory Chandler
Ron Chandler and Cynthia Herrera
Lee Anne Chappelle
Mary Cherweznik
Darlene Chiappetta
Roger and Donna Choinsky
Greg Chrisafis
Daniel and Pamela Christensen
Thor and Joan Christensen
Marcia Christianson
Tom and Judy Christofferson
Rich Ciardo and Beth Dean
Debra Clark

James and Martha Clark
Robert and Kay Clausen
Sue Cleary-Koch
John and Karen Cliffe
Ronald Clohessy
John and Mary Jo Coffee
Peter Coffey and Kristine Cleary
Rick and Lana Colbo
David Collette and Ann Marie Pharris-
Collette
Joseph Collins
Gerald and Elizabeth Connolly
Robert and Christine Conroy
The Constable Family
Cindy Cooper
Carol Coppersmith
George and Violet Corliss
Carol Croegaert
Eugene Crossot
Arthur and Barbara Cupps
Janice Curnes
Kathleen Curran
Elmer Cwik and Mary Skaltitzky
Richard Czeszynski
Cathy Daly
Christopher Zibart and Catherine Daubard
Richard and Mary Davenport
Bruce Davidson
Richard and Martha Davis
William and Julia Davis
Hans and Bernadette Dawson
Douglas De Laurier
Lois Ellen Debbink
William and Joan Dehnel
Rod DeKruif and Valeria Rykowski
Barbara DeLaney
Christie Delong
Thomas and Shirley Depies
Frank and Karen Dethloff
Michael and Valarie Dethloff
Joseph and Barbara Devereaux
Mary DeVita
Thomas and Lynn Dewing
Lynda Di Piero
Gabriela Dieguez and Francisco Enriquez
Peter and Elizabeth Dietz
William Dietzler
Dan and Ann Diliberti
Michael Dill and Yvonne Lumsden-Dill
Mary Dillmann
Janet DiMarco
Roger and Regina Dirksen
H. Robert Dittmer
Kimberly Doheny
Linda Dohmen
Kenneth Doine
Sylvia Dolinski and Kristi Bakken
Ken and Barbara Donner
Art and Rhonda Downey
Diana Doyle
Patrick and Mary Duffy
John Dunn
Janet Dunst
Dianne Dziengel
Marsha Dzioba
Candace Eastern-Walz
Timothy and Cindy Eberhardy
Mark and Laurie Eder
Linda Edmondson
Rip and Marybeth Edmondson
Mark and Jennie Ehrmann
Rosemarie Eierman
Barbara Eisenberg
Wyatt Elder
Chris and Bonnie Ellerd
Don and Mary Ellingsen

2019/20 DONORS

Nancy Ellis
 Carl and Karen Engelhardt
 Diane Evans
 Dennis and Pat Faherty
 Tom and Peggy Fahl
 George and Jill Fahr
 Gretchen Farrar-Foley
 Patti Farrell and Randy Gschwind
 Bradley and Sharon Fedderly
 Sarah Fierek
 William Finlayson
 Joyce and Morris Firebaugh
 Richard and Barbara Fischer
 Timothy and Roberta Flatley
 Richard and Ingrid Foley
 Jacob Fons
 Thomas Foote
 Betsy Forrest
 Helen Forster
 Nick and Jenny Foshag
 Kimberlee Foster
 Stanley and Janet Fox
 Kris Franceschi
 Dana Francisco
 Lou and Jan Frank
 Richard Palchak and Marcia Frankiewicz
 Steven and Linda Franz
 Mary Liz Frenn
 Bonnie Freudingner
 Jerry and Joanne Friedman
 Linda Gaalaas
 Joan Gaeth
 Walter and Donna Gager
 Bridget A. Gallagher
 David Gapinski
 Claudia Garber
 Kristine Gauger
 Sheila and Don Geib
 David and Vel Geraldson
 Matthew and Karin Gerdisch
 Edward and Patricia Gibson
 Matt and Nancy Gibson
 Emmely Gideon
 Jon and Nancy Giencke
 Heiner and Nancy Giese
 Gary and Faye Giesemann
 J.L. Gilbert
 Georgette Gilpin
 Carol Glaser
 Nathan and Karen Glassman
 Kelly Glostott
 Karl and Diana Glunz
 Mark and Jacqueline Gold
 Stephen and Ellen Goldstein
 Virginia Goode
 Dan and Sharon Goodmann
 Jim Milner and Karen Gotszler
 Ralph and Jo Ann Gould
 Georgette Goundie
 Mark and Sandy Grady
 Greater Green Bay Community Foundation
 Charles P. and Kathleen T. Riley Fund
 Rosalie Greco
 Brent and Mary Sharon Gregory
 Christopher and Jeanne Grenda
 Michael and Mary Grennier
 Paul Johnson and Patricia Grieb
 Steve and Candice Griffith
 Barbara Griffiths
 Sylvia Grigg
 Robert and Barbara Gross
 Myrna Grossman
 Dennis Grzezinski and Jane Porath
 Denis and Helga Guequierre
 D. Michael and Carol Guerin
 Ralph Gugerty
 Laura Gulatz
 Bruce Gunderson
 Charmaine and Kurt Gunderson
 David and Libby Gutterman
 Carolyn Haack
 Joseph H. Haas
 Judith Haass
 Sally Habanek
 Warren and Denise Haeberle
 Douglas and Jane Hagerman
 James and Joan Hagner
 Paul and Patricia Haislmaier
 Halo Vino LLC
 Larry Hamlin
 Fred and Marsha Hammer
 Winifred Hammermeister
 Joe and Jami Hanreddy
 Linda Hansen
 Ernest and Diane Hanson
 Jeffery Harmon
 Gerry Harrison
 John and Judith Hartl
 Daniel and Helen Hartsman
 Richard and Shirley Harvey
 Carol Hase
 Karin Haug
 Helen Hawke
 Tim Hawks and Mary McCormick
 Karen Hebert
 Roger Hedding
 Dale and Carolee Heinen
 Thomas and Pamela Heinrich
 Jackie Heise
 Jeffery and Nancy Held
 Robert and Sally Henzl
 Patrick Hepp
 Thomas Herdeman and Peggy Chapman
 Mathew Herman
 Dean and Tammy Herro
 Susan Herro
 Jerold and Joyce Hershberger
 Karen Herz
 Beverly A. Hess
 David Hetzel
 Gordon and Diana Hetzel
 Dennis and Joyce Hibner
 E. Alexander and Barbara Hill
 John Hinnendael
 George and Michelle Hinton
 Steven and Catherine Hoelster
 Dale and Sandy Hofman
 Winston and Margaret Hollister
 Peavy Holmes
 Neil Hootkin
 Dan and Sue Horton
 R. Dennis Horvath
 John and Kathryn Housiaux
 Neil and Monica Houtler
 Wendel Hruska
 Barbara Hufschmidt
 Joanne Hulce
 Robert Hussinger and Karen Kindel
 Ted and Sharon Hutton
 James and Laura Hyland
 Kay Hyler
 Kenneth and Mary Ingles
 Sandra Ivers
 William and Katie Jackson
 Peter and Jean Jacobsohn
 Mary Beth Jacobson
 Bill and Mary Pat Jacoby
 Aimee Jahns
 Christine L. Jameson
 Sandra Jandegian
 Trina Jashinsky
 Michael Jassak
 Amanda Jannene
 Thomas and Pauline Jeffers
 Judge William Jennaro (Ret.) and Rita Jennaro
 Larry and Carol Jensen
 Nancy Jesse
 Jewish Community Foundation
 Naomi C. Arbit Donor Advised Fund
 Margery H. and Irvin M. Becker Donor Advised Fund
 Roberta and Sanford Fedderly Donor Advised Fund
 Jordan and Phyllis Fink Donor Advised Fund
 Alice and Jerome Jacobson Donor Advised Fund
 Sherry and Norm Malmon Donor Advised Fund
 Audrey A. Mann Donor Advised Fund
 Kim Temkin-Taylor and Richard Taylor Donor Advised Fund
 Paul and Diane Jock
 James and Angela Jodie
 Allen and Sharon Johnson
 Barent and Noreen Johnson
 Douglas Johnson
 Dwight Johnson
 Greg and Jackie Johnson
 Janet Johnson
 Joan and Raymond Johnson
 Steve Johnson
 Judy Jones
 Tommie and Monica Jones
 Jayne Jordan
 Scott and Jill Jorgensen
 Paul and Judy Joseph
 Caroline Joyce
 Robert and Kathleen Juday
 Steve and Barbara Kaainoa
 Dora Kabrich
 Ruth Kallio-Mielke
 James Kane and Hilarie Morrow-Kane
 Lin Kanitz
 Sandra Karkossa
 Steve and Carolyn Karl
 Dale and Susan Karpen
 Joe Karpfinger and Craig Thelen
 Mary Ellen Kasprovicz
 Ken and Jeanne Kassees
 Deborah Katz
 Michael and Cindy Katzoff
 Stephen and Diane Kavalasuskas
 Frances Kavenik
 William and Judy Kay
 David Keach
 Sally Kelling
 Dennis Kelly
 Edward F. Kelly
 Robert and Sarajane Kennedy
 The Kenwoods
 Jane Kerwin
 Alan Kesner
 Fredrick P. and Joan F. Kessler
 William Kettering
 Beverly Key
 Jack and Audrey Keyes
 Elynor Kimmel
 Charles and Sandra Kincaid
 Hans and Ellen Kirkegaard
 Ralph and Sharon Kirsch
 Richard and Rita Klick
 Don and Carol Klockow

2019/20 DONORS

Raymond and Anne Kloss
Dennis Klumb
Diane Knight
Gary and Julie Knippen
Mary Knudten
Kenneth and Margaret Konet
Jeanne Kornkven
Carolyn Korona
Don and Mary Korte
Sharon Kosick
Carolyn Kotchi-Aslaksen
Lou Ann Koval
Jerome Kowalski
Rosemary Kraemer
Sharon Kraklow
Bruce and Pamela Kraus
Bruce and Shirley Krenzke
Bruce and Jeanne Kress
Caroline Krider
Sharon Kruger
Anne Kumor
Dr. James and Elizabeth Kuplic
Nancy Labovitch
James and Suzanna Lacy
Thomas and Donna LaGuardia
Thomas and Patricia Landrum
Robert Lang
Peter and Kristin Langhoff
Norm and Judy Lasca
Gregory and Mary Laska
Michael Lattos
Charles and Estella Lauter
Mr. and Mrs. William Law
Robert and Carolyn Lawrence
Ann Lehman
Sam Leichtling and Lindsey Tauber
Richard Leinbarger
Frederick LeMere
Mary Fran Lepaska
Mike and Laura Leske
Gillian Lester-George and Manuel D. Montesinos
Sally Lewis
Roman and Leigh Anne Lichon
John and Jan Liebenstein
James and Barbara Lijewski
Kerri Lintott
Diane Lipman
Bill and Marlene Listwan
Daniel and Heather Littlejohn
Saskia Lodder
Jeffrey and Jodi Logan
Pat Lombardo
Julie Lori
Jacobo Lovo
Catherine Lower
Sheldon and Marianne Lubar
George and Elizabeth Lubeley
David and Carrie Lucke
Glenn and Nancy Luedtke
Jim Lukas
Mary Lukaszewicz
Ken Lukow
Glen and Sally Lunde
Alan Lunden and Daniel Gooding
Dona Rae Lundin
Johanna Lutterbie
Keith Lutz
LeRoy and Anne Lutz
Janet Lynch-Eisenhut
James Lyons and Margaret Barron
Steve Macek
Ellen MacFarland
Cynthia Madson
Maureen Majeski
Magdalena Major
John Makowski
Mary Beth Malm
Michael and Jane Malone
Thomas and Terri Malta
Allen and Sharon Marifke
Hon. Wayne and Judith Marik
Christopher and Maryann Marowski
Michele Marsh
Bob Marshall and Hedy Lukas
Margaret Marshall
Dean Martell
Anthony and Christine Martin
Donna Martin
Drs. Leslie Martin and Sabina Diehr
Andrew Martinez
Chris and Judy Martinez
Donna Martynski
Juanita Mast and Jeanne Durnford
Frank and Kathy Mattaino
Marsha Matte
Frank and Rose Mary Matusinec
Marc Mayerhoff
Don and Gerri Mayew
John and Suzanne McArdle
Dennis McBride and Karen Barry
Brian McBryde
Margaret McCarthy
Michael and Patricia McCauley
Victoria McCormick
William and Pauline McCown
Rita McDonald
Judith R. McGauran
Barbara McGinnis
Carol and Michael McIntyre
Paula McKean
Thomas and Cynthia McLinn
Joyce Meinicke
Heinz and Helen Melzl
Andrew Mendelson
Beth Meyer
George and Sallie Meyer
Mark Meyer
Lily Miceli
Jims Michael
Barbara J. Michaels
Paul and Molly Mikna
Charles and Regina Miller
Gary and Cheryl Miller
Jay and Bobby Miller
Jerry and Marge Miller
Theodore Minor
David Misorski
Connie Molbeck
Dan and Marlene Molter
George and Elaine Monis
Michelle Monnat
Martha Moore
William Moos and Joan Yahnke
William and Jennifer Morales
Michael Morgan
Mary Moritz
Dianne Morris
Lonnie and Cindy Morris
Samantha Morris
Christine Mortensen
Maelynn Morzinski
Jerry and Mary Mudlaff
Laura Mueller
Steve and Mary Mueller
Virginia and Frank Mueller
William and Rosemary Muentner
David Mullins and Steph O'Connor
Molly Mulroy
Frank and Kathy Mulvey
Judy Mundy
Andrea Munoz
Howard and Elaine Myers
Lynn Nackers
Catherine Narloch
Dr. Richard and Jill Neils
Kathy Nelson
Trina Nelson
Richard and Bonnie Nestor
James and Elizabeth Neubauer
The Neumann Family
Jay and Barbara Newell
Judith Newland
Mark Nielsen
Michelle Nielsen
Ronni Nivala
Patricia Nnadi
Gilbert and Katherine Nock
John Nook
Gregory Norman and Margaret Stratton
Jean A. Novy
Marilyn Nowak
Kenneth and Elizabeth Nowakowski
Paul Nowakowski
Terence and Fredrian Ochs
Jon and Barbara O'Connell
Ann O'Hara
Lois O'Keefe
Eric Oleson
Kaare Olsen
David Ondracek
Jennifer Ondrejka and Tom Rudy
Sandra Orcholski
Jim and Elizabeth Orth
Thomas and Cindy Oskey
Dennis and Anne Oulahan
Karen Owens
Richard Owens and Judy Edmonds Owens
Joyce L. Pace
Gerald and Marjorie Pagel
Josephine Paider Trask
Alice Palank
Marjorie Palleon
Kathleen Palmen
Patrick Paolo and Denise Doucette
Jim and Sandra Pape
Sandra Parish
Jason and Amy Parry
William and Elizabeth Parsons
Andy and Maria Patterson
Dale Pauls
Les and Patricia Paulson
John Payton
Shelia Payton
Thomas and Judith Pelt
Dennis and Rebecca Pelzek
David and Louise Petering
Bettie Petersen-Dicks
Mark and Juliet Peterson
Peter and Rosemary Petroll
Bill and Fe Petterson
Kim Pettiford and Martha Hood
Claire Pfleger
Andrew and Sara Pforr
Betty Philipps
Marjorie Piechowski
Jennifer and Joseph Pieper
Richard Pleister
James Polzin
Thomas Polzin
David and Diane Powell
Sarah J. Pratt, M.D.
Maurine Pravidzk
William and Nancy Preston
Wendy Pribbanow
Dr. Barbara Prindiville
Eric and April Printz
David and Janet Pritchard

2019/20 DONORS

Dan and Connie Pronley
Pat Prosser
James and Nancy Puechler
Rick Pues
Jennine Pufahl
Paula Puntenney
Edward and Pamela Quebbeman
Sharon Quinlan
Therese Quirk
Dr. Randall J. Raasch
Linda Radder
Robert Raffel
Stephen and Susan Ragatz
Dr. Thomas and Catherine Raspanti
Ben Ratka
Raymond and Holly Rausch
Michael and Barbara Rawling
Joe Rayman and Elmo Wendorf
Steve Raymonds
Jamie Reau
William and Bettyann Redetzke
Janice Reed
Mary Kay Reed
Bud Reinhold and Eileen Kehoe
Lisa Reinicke
Viola Rembert
Vera and Tania Remeniuk
John and Page Remmers
Ray and Mary Rentmeester
Richard Rezek
Werner and Carol Richheimer
Tim Riley and Robin Gerson
John and Laura Rinaldi
Paul Ritch
Charlene Ritchey
John and Rachel Roberts
Barbara Robinson
Joseph Rogge
Jake Rollefson
Richard Roloff
Jeff Romenesko
Terrance Ronsman
Gerv and Bev Rose
Allan Rosenwald and Mary Grau
Debbie Ross
Michael Ross and D.A. Leonard
George and Dotty Roth
Timothy and Cathy Rottmann
Amy Rovin
Michael Rupp
Matt Rusch
David and Elen Sarah
Mark Sain
Michael Salinas
Nita Salzman
Dominique Samari
Mark and Laurie Sanders
Gary and Linda Sarnier
Donald Sass
Deanna Savage
John Savas and Sara Jane Marlega
Michael and Roberta Schaalman
Karen Scharrer-Erickson
Steve Scheu
Ron Schimmelpfennig
Terry Schlenker
Lori Schlosser
Gary Schmid
Jean Schmidt
Kay Schmidt
Paul Schmidtko
Joseph and Sheri Schmit
Mary Schmitz
Mary Schnabel
Tom and Joanne Schoenecker
Mark and Sue Schoepel

Sheila Schrieber
Harold and Eleanor Schroeder
William and Judith Schuele
Philip Schultz and Melissa Mooney
David Schulz
Eleanor and Eugene Schulz
Lyman and Carol Schulz
Patrick Schumacher and Mary Henneman
Tom and Karen Schuppe
Carol Schwanz
Luz Scott
Barb Scotty
Bob and Bunny Scudder
Amy Sedlar
Rich and Becky Severson
Ronald and Judith Shapiro
Richard Felty and Nancy Shebuski
Philip and Joan Sherman
Drew Shields and Joy Peot-Shields
Vicki Shimi
Emily Shipman
Duncan Shroust and Eileen Olen
Robert and Diane Shumaker
Daniel and Megan Shvartsman
Kirsten Simanonok
Mary Simkin
Allan Simsic
Dianne Sinnwell
Gordon and Mary Skare
Mary Ann and Craig Skold
Brad Skondcki
Warren and Patrice Skonieczny
Ralph and Kathy Skudlarczyk
Paul and Kathy Slesar
David and Nancy Slinde
Jonathan and Shirley Slomowitz
Dale and Catherine Smagliik
Daliska Smith
Duane and Carlotta Smith
Elizabeth Smith
Mark and Minna Smith
Stephen and Mary Smith
Kenneth and Sally Smits
Shirley Smukowski-Sobczak
Sally Soderberg
Sharon Sohner
Joseph and Rose Spang
Jim and Carol Spangler
Dean Sperry
Teresa Spigel
Catherine Spyres
Alex Squitieri
Charles and JoAnn Stabenfeldt
Jo Ann Stade
Donna and Donald Steffens
Kimberly Stahn
Philip Starr
Andrew Stavish
Tony Stavish
Jeffery and Marjorie Stearns
Bonnie Steindorf
Michael and Sarah Steinle
Jason and Julie Stephens
Cathy Sterkin
Steve Stern and Florencia Mallon
Douglas and Jean Stewart
Ronald and Patricia Stifter
Kathleen Stiilin
Ed Stone
George and Deborah Stone
Hattie Stone
Steven Stone and Julie Banzhaf-Stone
David and Cynthia Stott
The Streich Family Foundation
Angela Strelka
Robert and Kimberly Suhr

Karen Sundelius
Kristine Surek
Jack Eichorst and Madden Swan
Ann Swenson
Benjamin and Anne Swoboda
Dennis and Telva Szymorski
Roberta Tacke
Miriam Tangle
Denisha Tate-McAlister
Terence Taylor
Phyllis Teets
Margaret Tennessen
Marcia Theusch
Gary and Tracy Thiel
John and Anne Thomas
Alice and Scott Thomson
Frederick and Harriet Thomson
Steven Tietz and Catherine Markwiese
Robert Tittle and Sharon Riley
Jeanne Tomaro
Nancy Torphy
Louis Toutant
Joy Towell
Anne Tremel
Triangle Enterprises, Inc.
Janet and Glen Trigg
David and Geraldine Tschopp
Douglas Turner
Cynthia Tuszkiewicz
Larry Upton
Richard and Ruth Urdahl
Elizabeth Urpanil
Judy Valentino
Pamela Van Doren
Peggy Van Horn
Julia Van Norwick
Kaye Vance
Jack and Wendy Venske
Christopher and Melinda Vernon
Dena Vette
Donna and Norman Vincent
Linda Vincent
Anthony and Jean Vodnik
Nancy Vose
Cynthia Wagner
Dennis and Janice Waisman
Jon Waite
Patti Walker
Jon and Carol Wall
Jerry and Donna Walsh
Roger and Maricolette Walsh
Ruth Lynne Walsh
Dr. Gary Walters
Jessica Ward
Pete Washington
Susan Watson
Shelley and Geoff Watters
Milton and Janet Weaver
Daryl and Julie Webb
Thomas Weber
McArthur Weddle
Andrew and Ayano Weisensel
Russell and Alyce Weiss
Mark Weissgerber
Robert Welch
Ronald and Agnes Wells
David and Cindy Werner
Barbara Wesener
Nathan and Stephanie Wesselowski
John and Judith Wettengel
Corbin and Libby Weyer
Theresa and Mark Weyker
Betty White
Darrel and Dianne White
William and Mary Whitney
Kary Wiesler

2019/20 DONORS

Ron Wildasin
John and Karleen Wilde
Andre and Jennifer Williams
Jullian Williams
Michael and Joyce Williams
Penny Williams
Kilby and Amy Williamson
David and Beth Wilmoth
John and Sue Wing
Michael and Joyce Winghart
Richard and Margaret Winz
Karon Winzenz

Jessica R. Wirth
Samuel Wisotzkey and Margo Kirchner
JoAnne Wojciechowski
Sharon Wolf
Jean Woller
Diana Wood
Davida Woods
Derril and Laurie Wright
Mark and Sandra Wyss
Bruce and Beth Yeko
Mike Yost and Lisa Schuldt
Dennis Zacher

Barbara Zagorski
Barbara Zall
Scott and Meg Zamzow
Mark Zellmer
Howard and Connie Zemlicka
David Zepecki and Diane Diel
Ralph Zick
Thomas Zigan and Scott Jones
H. Russell and Georgianne Zimmermann
Mary Lou Zuege
Thomas Zuleger

IN KIND GIFTS

Patrice Bartelme
Robert and Denise Bartlett
Jennifer Cregar
Betty Cronan
Chris and Jane Flieller
InSinkEratrator Division of Emerson Electric Co.
Kohler Co.
Tony Krausen

Carol Ross
J. Richard and Karen Sendik
Bonnie and Bill Stafford
Louise Stein
John and Megan Susko
Nancy Weiss-McQuide
Barbara Wrolstad

MEMORIAL GIFTS

In Memory of Thomas Altenburg

Lou and Jan Frank

In Memory of Jean Apple

Deb and Peter Johnson

In Memory of Gloria Bergman

Richard Bergman

In Memory of Gerry Bieh

Diane Dalton
Janet and Bill Hume
Maureen Kania
Ritz Holman LLP
Catherine Rynkiewicz

In Memory of Michael Bolger

Richard and Sara Aster
Bechthold Family Fund
John and Caryl Brubaker
Roger and Regina Dirksen
Ken and Barbara Donner
Connie and John Kordsmeier
Sheldon and Marianne Lubar
Michael and Patricia McCauley
Jere McGaffey

Andrew Mendelson
Tony and Donna Meyer
Bob and Janet Montgomery
Patrick and Noreen Regan
Brigid Rooney

Dick and Fran Rubinstein

In Memory of Eddie DeBrue

Alison Riedi

In Memory of James Allen Dix

Mary Paula Dix

In Memory of Anne Dow

Book Club
Denise Bricker and Ken Crowley
Robert and Karen Dean
Eileen and Howard Dubner
Timothy and Roberta Flatley
Kris Franceschi
Norm and Judy Lasca
David and Kris Reichner

In Memory of Edward M. Dowling

Diane Dalton

In Memory of Patricia Ericson

JoAnn Keulks

In Memory of Byron T. and Suzanne S. Foster

Foster Family Foundation
Elizabeth Vaeth

In Memory of Carolee Goetzinger

Mike and Karen Bell
Judy Berka
Daniel and Joan Boyce
George and Della Carrie
Don Chapman
Craig and Lori Chicks
Robert and Charlotte Christensen
Eloise Cliff
David and Tracy De Angelis
Zoe Erickson
EXCEL Group
Nicole Fermanian
Henry Goetzinger
Roy and Shirleen Harkins
Kerry Johannsen
Martha Kehoe
John Klopp
Robert and Katherine Kobza
Nancy and Betty Kwiecinski

Alice and Duane Misiewicz
Gerald and Marjorie Pagel
Robert and Roseline Paprocki
Gail Pintaroz
William and Bettyann Redetzke
Bud Reinhold and Eileen Kehoe
Jack and Mary Ellen Schickowski
Linda Schierenbeck
Gail Schmidt
Bernhard and Nancy Schreiber
Theo and Shirley Sheedy
Walter and Nancy Sievert
David Smith
Ingrid and Roy Smith
Andrew Stavish
Tony Stavish
Joseph and Patricia Steigerwald
Don Steinke
Maria Valentin
Anthony and Jean Vodnik
Pat and Susie Walczak
Frank and June Weber
Victoria Ann Wenke

In Memory of Bob Holmes

Jan Effinger

In Memory of Janice

Milo and Betty Collins

In Memory of Dewonda K. Johnyakin

Diane Dalton

In Memory of Carl Lutterbie

Johanna Lutterbie

In Memory of Irena Macek

Steve Macek

In Memory of Patty McCallum

Thomas and Mary Domer
Thomas and Marcia Flanagan
Timothy and Mary Keaveny
Bruce and Jeanne Kress
Scott and Julie Miller
Mary Simkin
Joan Turner

In Memory of Jack McKeithan

Connie and John Kordsmeier

In Memory of Jo McReynolds

Blochowiak

Kenneth Blochowiak

In Memory of Isadore Perlmutter

Jane and Stephen Chernof

In Memory of Tracey Priestly

Marilyn Corlew

In Memory of Eleanor Repinski

Gillian Lester-George and Manuel Montesinos

In Memory of Peggy Rose

Katharine Banzhaf
Diane Dalton

In Memory of Kathleen Schaefer

Rich Ciardo and Beth Dean
Thomas Herdeman and Peggy Chapman
Allan and Mary Grau Rosenwald
Jo Ann Stade

In Memory of Kristine Schmidt

Kathryn Bloomberg

In Memory of Diane C. Treptow

Ron Treptow

In Memory of Jean Walker

Janet Dunst

In Memory of Edwin S. Watts, M.D.

Nancy Blanchard Watts

HONORING GIFTS

In Honor of Dr. Mary Arenberg and Dr.

George Schroeder

Julie Bohnhoff-Overby

In Honor of Patsy Aster

Joan Hardy

In Honor and Appreciation of Patty and Jay Baker

James and Elaine Sweet

In Honor of Jay Baker's Birthday

Jack and Ruth Beck

In Honor of Katharine Banzhaf

Alfred Buettner

Steven Stone and Julie Banzhaf-Stone

In Honor of Matt and Kellen Bartel

Tommie and Monica Jones

In Honor of Matt and Kellen Bartel's Wedding

Andrew Nunemaker

In Honor of Leigh Birmingham

Andy and Amy Ardis

In Honor of Tom and Judy Christofferson

Rick and Sue Strait

In Honor of Bob and Karen Dean

Thomas and Suzanne McKale

In Honor of Alex and Haley Gerding

Anonymous

In Honor of Jason Graham

RSM US LLP

In Honor of Joe Hanreddy

Charles and Estella Lauter

In Honor of Deb Johnson's Birthday

Anonymous

Dale and Carolee Heinen

Lee Kingston

Donna Kultz

Phyllis Lardinois

Susan Psaris

David and Nancy Wareham

In Honor of Marina and Frank Krejci's 35th Anniversary

Peter Coffey and Kristine Cleary

In Honor of David and Camille Kundert's 50th Anniversary

Jim and Marge Hartwig

Mary Sorrentino

In Honor of Carol Lowey

Kim and Judy Casper

In Honor of Rob and Carol Manegold

Julie and Mark Petri

In Honor of Patti McKeithan

Jack Gebhardt and Deborah McKeithan-

Gebhardt

In Honor of Sally and Jim Mergener's 50th Anniversary

Julie Church

Jinny and Les Wilson

In Honor of Greg Oberland

Doug and Jane Hagerman

Peavy Holmes

Meredith and Thomas Scrivner

In Honor of Susan Robertson

Louis and Edythe Manza

In Honor of Chuck Rozewicz

Morgen Clarey

Amy Dorman

Alli Engelsma-Mosser

Meghan Roesner

In Honor of Ann F. Shepherd

Rebecca Harms



At Milwaukee Catholic Home, we believe that an engaged life is a full life. And the more aspects of your life that you engage, the healthier you age. **A Life Engaged** brings exceptional programming that engages the whole person, encouraging you to be your best self at every age.

Visit alifeengaged.org to learn more and register for unique events open to the public!



A LIFE ENGAGED

on to your next adventure

A Milwaukee Catholic Home Program

2462 N. Prospect Avenue, Milwaukee, WI 53211

A STANDING OVATION FOR YOUR HOME?



You have a dream... let's build on it.
getstarted@klassenremodeling.com
262.754.3770

KLASSEN
Remodeling
&
Design

Ask about
Preplanning.

Consultations
are free.

414-964-3111



Goodman·Bensman

WHITEFISH BAY | FUNERAL HOME

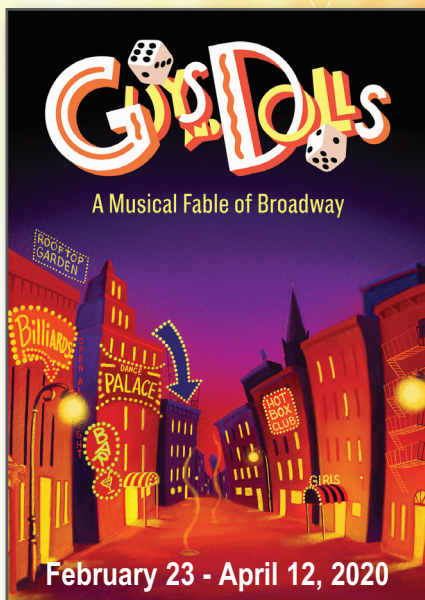
Earth-friendly. Dignified. Respectful.

Traditional burial and cremation services are also available.

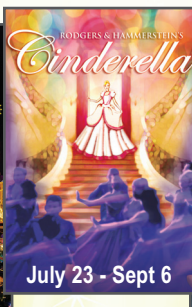
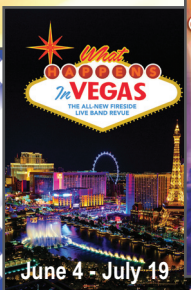
4750 North Santa Monica Blvd., Whitefish Bay | goodmanbensman.com

Debra Marcus Watton, President | Terry Kleinman, Preneed Consultant

EXPERIENCE OUR 2020 SEASON OF MUSICAL FAVORITES!



Dinner Theatre Packages \$73.95. Youth Packages \$47.95.



The Fireside

Dinner Theatre

www.firesidetheatre.com

1131 Janesville Ave, Fort Atkinson, WI 53538 | 800-477-9505

Superb Musicals | Memorable Dining | Spectacular Shops | Fabulous Service