

# A CHRISTMAS CAROL

BY **Charles Dickens**

ADAPTED AND DIRECTED BY **Mark Clements**

# *Elaine's Hope*

LUTHERAN HOME MEMORY CARE

OPENING DECEMBER 2019



The Lutheran Home is proud to present Elaine's Hope, our new memory care community.  
Learn more about this new community and all our senior care options.

Contact us today! 414-326-3398

[www.thelutheranhome.org](http://www.thelutheranhome.org)



Upgrade your home with beautiful styles.



## Get ready for the new year with Pella® windows and doors.

Your local Pella branch has all the styles, finishes and hardware to give your home a new look with upgraded energy efficiency. Whether you're interested in wood, fiberglass or vinyl, Pella has the windows and doors to enhance your home, inside and out.

Come see us and discover  
what's waiting at our locations  
in Brookfield, Green Bay,  
Madison, and Appleton.

888-984-1344 | [PellaWI.com](http://PellaWI.com)



**Gina Della**  
General Manager



Pella Windows & Doors  
of Wisconsin

### Visit [PellaWI.com](http://PellaWI.com) for our latest offers.

Plus, mention this ad when you schedule your no-obligation, in-home consultation and at your appointment, receive a **free \$50 gift card\*** for the new luxury SilverSpot Cinemas at the Corners of Brookfield!

\*Limit one per household, while quantities last.







*Milwaukee*  
19-20 SEASON

VOLUME 30 | ISSUE #2

PRESIDENT + PUBLISHER **Steve Marcus**

VICE PRESIDENT **Matt Thiele**

DIRECTOR OF OPERATIONS **Greg Widener**

ART DIRECTOR **Sarah Sallmann**

VENUE RELATIONS // MILWAUKEE & MADISON **Ryan Albrechtson**

VENUE RELATIONS // CHICAGO **Alicia Senior-Saywell**

EDITORS/Writers **Ryan Albrechtson | Amanda Finn**

CONTRIBUTING WRITERS **Jonathan Abarbanel**

COMPANY COMPTROLLER **Karin Marcus**

ACCOUNTING MANAGER **Lisa Cunningham**

PRODUCTION SUPERVISOR **Kyle Jewell**

ADVERTISING SALES // CHICAGO **Will M. McAuliffe | Dave DeGraff**

ADVERTISING SALES // MADISON **James Boylan | Courtney Neckar**

ADVERTISING SALES // MILWAUKEE **Jacqueline Jaske | Barbara Kluth | Daryl Skardzinski**

SALES SUPPORT **Natasha Goeller**



**mp** **MARCUS PROMOTIONS, INC.**

CHICAGO // MADISON // MILWAUKEE

Milwaukee: 262.782.9751 | Chicago 773.938.6681 | Madison: 608.257.4560

[www.footlights.com](http://www.footlights.com)

Footlights is published by Marcus Promotions, Inc. The content of any article in this publication is based solely on the opinion of its writer and does not necessarily reflect the opinion of Marcus Promotions, Inc., Footlights, or its staff. The center program content is at the sole discretion of the performing arts group. Any errors, omissions, or inconsistencies are their responsibility. Inquiries or comments should be directed accordingly.





Over 8,000 Wines  
3,500 Liquors & 1,500 Beers

HIGH END LABELS AT EVERYDAY LOW PRICES

*Award winning reputation*

**Named one of the 50 best wine stores in America**

**Voted #1 Best Liquor Store, Service, Selection and Price  
by Milwaukee Magazine**

**Voted "Best Wine, Beer and Liquor Store"  
2001-2018 by Shepherd Express Readers**

**Voted Top Choice Award Beer Wine Liquor Store  
2019 by Milwaukee Journal Sentinel**



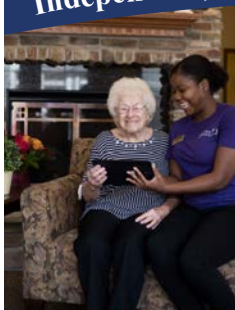
*Locally Family Owned & Operated Since 1960*

Milwaukee | 5031 W Oklahoma Ave. | 414.545.2175  
Waukesha | 919 N Barstow Ave. | 262.547.7525

Visit us on Facebook, Twitter, Instagram    [www.discountliquorinc.com](http://www.discountliquorinc.com)

WE CAN HELP YOU  
WITH THE *next step.*

**Independent, Assisted Living and Memory Care Communities**



**Premier Amenities • Personalized Care Plans • Luxury Lifestyle**

**HERITAGE**  
SENIOR LIVING

Greenfield • New Berlin  
West Allis • Elm Grove  
Waukesha • Menomonee Falls  
Hartland • Muskego  
[heritagesenior.com](http://heritagesenior.com)

Schedule your  
tour today!

**844-658-4475**

# AT YOUR SERVICE. AT YOUR SIDE.



**Mark Krause, Owner**

For over 80 years, we have helped the families of Milwaukee and New Berlin honor their loved ones. Being a family owned funeral home, we understand the importance of family values. That's why we take pride in fulfilling your wishes with kindness, compassion and respect. We devote ourselves to the complete care of you and your family, guiding you every step of the way through one of life's most difficult times. When you need us most, we'll be right there by your side. That's our promise.

*"Stop by anytime and see everything we have to offer."*

**Milwaukee**  
**414-354-9400**

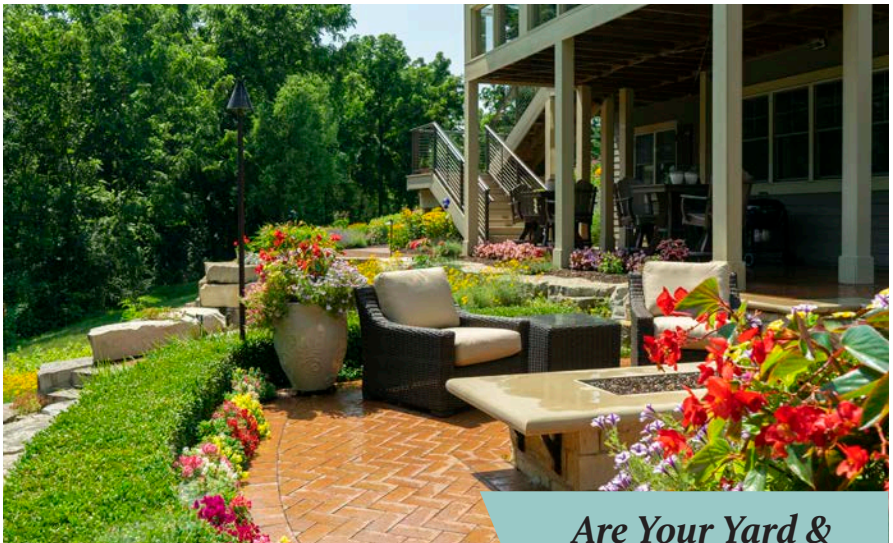
**Brookfield**  
**262-432-8300**

**Milwaukee**  
**414-464-4640**

**New Berlin**  
**262-786-8009**



FUNERAL HOMES & CREMATION SERVICE, INC.



**David J. Frank**  
**Landscape Contracting**

***Are Your Yard &  
Home in Harmony?***

*Request a quote today!*  
**davidjfrank.com**



# Don't Be A Scrooge!

## Give Back To Your Favorite Performing Arts Groups This Holiday Season

The holiday season is traditionally a time for giving. We give to our friends and family, to those less fortunate than us, to organizations and causes we care about. We take pride in not being “Scrooges” or “Grinches” as we come together to spread joy.

The performing arts, especially here in the Greater Milwaukee Area, are always giving. They give us entertainment, memories, laughter, and inspiration. The performing arts are such a vital part of this community. Here at Footlights, we're honored to work alongside so many of the incredibly talented artists and organizations that call this community home.

That's why this holiday season, Footlights has decided to dedicate this issue to giving back to the amazing groups we work with. This is a call to action to all of you, the patrons reading this sitting in the house. Maybe the show is just about to begin, or maybe you are excitedly reading more about the artists you just saw during intermission. We challenge you to help us give back to the many performing arts organizations in our community.

We've asked the groups we work with to send us lists of items that would help them this holiday season. Some of the items are listed right here in this article! All throughout this holiday season, we'll continue to add and update even more items and organization's wishlists on [Footlights.com](http://Footlights.com) - so make sure to keep checking back.

And if you don't have the resources to give some of these items - that's okay! David Cecsarini, Artistic Director of Next Act Theatre, reminds that there are many other ways to give to these wonderful organizations. “My wishlist only contains one item: audience,” says Cecsarini. “The best thing patrons can bring, send, and give to Next Act and all our performing groups is more audience.”

Here are “a few of our favorite things” that performing arts groups shared with us from their wishlists. Make sure to check out [Footlights.com](http://Footlights.com) for more items and more organizations!

Interested in helping check some of these items off of their lists?  
Reach out to Footlights Editor Ryan Albrechtson at 262-439-5750 or [ralbrechtson@footlights.com](mailto:ralbrechtson@footlights.com) and he'll get you in touch!





## Milwaukee Chamber Theatre

Dinner supplies (Such as paper plates, bowls, napkins, plastic cups, and cutlery!)

## Wisconsin Philharmonic

A new conference table and chairs.  
(To seat twelve people at our office!)

## Falls Patio Players

A man's wool top hat, or \$75 to purchase one. (For our upcoming production of Christmas Carol!)

## Waukesha Civic Theatre

Curtains for the Mirrors in the Studio (Our mirrored wall is great for dance classes and choreography rehearsal, but can be distracting for kids in other classes and audiences during performances. Long curtains would allow us to use the space to its fullest potential!)

## Concordia University

New Couches and Chairs (For students to use in our green room!)

## Milwaukee Repertory Theater

A projector (For use in the Quadracci Powerhouse!)



## SummerStage of Delafield

Professional grade, countertop popcorn machine. (Popcorn is our most popular concession item and our current machine is barely keeping up with demand!)

## Chant Claire Chamber Choir

New Folders (As our choir grows we need more!)

## Feast of Crispian

Elizabethan Period Costumes (We're not picky about this - think Ren Faire items! Tending toward larger sizes.)

## Cardinal Stritch University

A Compound Mitre Saw (We are very much in need of replacing an old and increasingly dangerous radial arm saw in our shop with a versatile new tool, most importantly to keep our student carpenters safe!)

## Skylight Music Theatre

Two high quality/high volume bluetooth speakers. (For use by our Education Department!)

## Sunset Playhouse

Home Depot Gift Cards (To help us purchase set building supplies!)



## Milwaukee Opera Theatre

A home printer/copier/scanner for our Company Manager (So he doesn't always have to run to DigiCopy!)

Make sure to check out Footlights.com for more wishlist items and more performing arts groups. Happy giving!



## Black Arts MKE Gives Artists of Color Incredible Opportunities... And Some Holiday Spirit

It's not a secret that there's a lack of opportunities for performing artists of color at all levels. In the, in 2016-2017 Broadway season, less than 19% of all roles were played by African American performers. This trickles down into theatre across the nation - from regional theatres, community theatres, and everything in between.

Here in Milwaukee, while we are lucky to have many organizations taking initiatives to bring more artists of color to the stage, we are equally in need of a movement to push even further forward. The leader of that movement, whose whole mission is to increase the availability and quality of African American arts, is Black Arts MKE.

"Black Arts MKE is uniquely positioned as a catalyst for advancing racial equity and inclusion in Milwaukee," says Barbara Wanzo, Executive Director of the organization. "Our programming advances racial equity for local artists of color by providing professional growth opportunities. This programming provides visibility and access to mainstream arts sector and has resulted in actual career advancement throughout the local performing arts venues and arts education sectors."

In 2015, Black Arts MKE started producing Langston Hughes' *Black Nativity* in collaboration with the Marcus Center. "We were searching for a wonderful holiday inspired piece by a renowned playwright that would attract the entire community but especially the African American community families, young adults, etc," says Wanzo. "There was a phenomenal community response to the musical. We heard many comments like, 'It's about time Milwaukee had something like this (i.e. represents the African American culture.)' The first year's play was instrumental in bringing together the community including many church congregations."

The production received such a great response, they decided to remount it the following year. Since, they've put a lot of effort into making this production accessible - such as offering student matinees to at-risk youth in neighboring elementary schools.

"Many at-risk youth and their families had not been inside a theater, much less be able to see a professional dynamic, engaging play onstage with people who look like them and who were from our community. Honestly, it





was both heartwarming and heartbreaking," says Wanzo.

During the last three years, director Malkia Stampley wanted to inspire social change through acknowledgement of a current community issue through performance prologue and post-performance audience engagement. "I allow a social issue that affects Milwaukee and the national community to be a guide as I stage the production. I like to think of it as a backdrop, a seed that will grow on its own once you leave the stage" says Stampley. "Our production takes place today, in a city like Milwaukee, so I also ask myself every year 'is this relevant?' In 2016, I was struck by the unrest in Sherman

Park. In 2017, the killing of unarmed Black men still dominated my heart as well as the controversy of Colin Kaepernick's kneeling and dismissal from the professional game of football. There are so many issues that touch my heart on a daily basis so it's not always an easy task."

This year, a new director takes on this production as Black Arts MKE presents the show for the 5th time. The show will be presented once again at the Marcus Performing Arts Center, and will run December 5-15. Tickets, and additional information, can be found at [MarcusCenter.org](http://MarcusCenter.org)



LIMITED-TIME  
**SPECIAL  
OFFER!**



DECORATING  
SOLUTIONS  
BY STEINHAFELS

We can help you create  
the home of your dreams.  
We offer 3 packages to  
suit your individual needs.

BUY A  
**6, 9, or 12**  
HOUR PACKAGE

**SAVE 40%**

- PLUS -

**SAVE 40%**

ON ALL SPECIAL  
ORDER MERCHANDISE

- PLUS -

**SAVE 40%**

ON ALL IN-STOCK  
MERCHANDISE

See additional photos of this design project, and many more at  
**[steinhafels.com/decorating-solutions](http://steinhafels.com/decorating-solutions)**

## A must see for adults 55+!



### ST. RITA SQUARE

A CAPRI COMMUNITY

Yoga Studio • Multiple Dining Venues  
Outdoor Piazza • Granite Countertops  
In-Unit Laundry • Pet Friendly • Much More

★★★★

**OPENING SPRING 2020**

(414) 588-0039 | Milwaukee  
StRitaSquare.com



### GRACE COMMONS

A CAPRI COMMUNITY

Walking Paths • Multiple Dining Venues  
Courtyard with Game Area & Fireplace  
Exercise Room • Pet Friendly • Much More

★★★★

**OPENING SPRING 2020**

(262) 305-7646 | Menomonee Falls  
GraceCommonsLiving.com

Rated M for Mature



Buy \$100, get \$20 for Free

GIVE THEM  
**DINNER**  
WITHOUT  
**DISHES**



**BARTOLOTTAS.COM**



***“My heart stopped 78 times. This is where my team worked together to save my life.”***

***– Nicole, Patient, Nurse  
at Froedtert Hospital***



**Seamless Care. When a  
health network ... networks.**

When Nicole collapsed from an undetected genetic heart condition, our team rallied around her. To save her life, surgeons had to amputate her legs because of her compromised blood flow. Nicole's team guided her through recovery until, with the help of prosthetics, she walked again. Nicole now cares for patients at Froedtert Hospital.

**Froedtert**



**What Is Possible** Learn more about  
Nicole's journey from patient to nurse at  
[froedtert.com/possible](http://froedtert.com/possible)

# MILWAUKEE REPERTORY THEATER



Milwaukee Rep is the largest performing arts organization in Wisconsin in terms of audiences served and one of the largest professional theaters in the country. For over 65 years, Milwaukee Rep has gained a national reputation as an incubator of new work, an agent of community change and a forward-thinking provider of vital arts education programs.

Each year, Milwaukee Rep welcomes up to 275,000 people at nearly 700 performances of 15 productions ranging from compelling dramas, powerful classics, new plays and full-scale musicals in its three unique performance venues — the Quadracci Powerhouse (720 seats), Stiemke Studio (205 seats) and Stackner Cabaret (186 seats).

Under the leadership of **Artistic Director Mark Clements** and **Executive Director Chad Bauman**, Milwaukee Rep ignites positive change in the cultural, social, and economic vitality of its community by creating world-class theater experiences that entertain, provoke, and inspire meaningful dialogue among an audience representative of Milwaukee's rich diversity.



**Mark Clements**  
*Artistic Director*



**Chad Bauman**  
*Executive Director*

## MILWAUKEE REP | PATRON SERVICES

---

### Contact Info

#### ***Ticket Office***

Phone Number: 414-224-9490

Fax Number: 414-225-5490

Mailing Address: Milwaukee Repertory Theater  
Patty & Jay Baker Theater Complex  
108 E. Wells Street; Milwaukee, WI 53202

E-mail: tickets@MilwaukeeRep.com

Hours of Operation:

Monday – Sunday Noon to 6 pm

On days with performances, the Ticket Office will remain open until show time.

#### ***Administrative Office***

Phone Number: 414-224-1761

Fax Number: 414-224-9097

Mailing Address: Milwaukee Repertory Theater  
Patty & Jay Baker Theater Complex  
108 E. Wells Street; Milwaukee, WI 53202

Hours of Operation:

Monday – Friday 8:30 am to 5:30 pm

#### ***Emergency Phone Number***

If you anticipate the need to be reached during a performance, leave your name and seat location with your contact information, along with instructions, to direct emergency phone calls to the House Manager at **414-290-5379** or **414-224-1761, ext. 379**.

### ***Cellular Phones/Electronic Paging Devices***

Please remember to turn off your cell phones and electronic paging devices.

In case of an emergency, these items may be left with the House Manager.

Also, as a courtesy to your fellow theatergoers and the actors on stage, please refrain from text messaging during the performance. Thank you!

## YOUR MILWAUKEE REP EXPERIENCE

---

#### ***Concessions***

Enjoy a drink or dessert in the Quadracci Powerhouse or Stiemke Studio lobby prior to the performance or at intermission. Please remember that food and drink (except bottled water and Rep sippy cups), are not allowed in the theater.

#### ***Gift Shop***

Located in the Quadracci Powerhouse is The Rep's Gift Shop, which offers show-specific merchandise and Rep logo products, as well as books and scripts of current and past productions. You can also purchase parking passes.

#### ***Rep-in-Depth***

Get an insider's look at the play from a member of the cast or artistic team with a discussion that begins approximately 45 minutes prior to every performance in the Quadracci Powerhouse and Stiemke Studio.

#### ***Rep TalkBacks***

After select performances, engage in a deeper conversation with members of the cast, artistic team and occasional special guests. Get TalkBack schedules by calling the Ticket Office at **414-224-9490**, online at [www.MilwaukeeRep.com](http://www.MilwaukeeRep.com).



## MILWAUKEE REP SERVICES

### Access



**Deaf or Hard of Hearing Services:** The Quadracci Powerhouse (QP) and the Stiemke Studio are equipped with an **infrared listening system** which ensures clarity of sound from any seat in the house. Performances are offered in **American Sign Language** for a Thursday evening of all QP productions and one Sunday matinee for all Stiemke Studio productions. We also offer a **Captioned Theater** performance during the second to last Sunday matinee performance of all QP productions. Please call The Rep Ticket Office at **414-224-9490** for more information. **Script synopses** are available upon request for QP and Stiemke Studio productions by calling **414-224-1761**.

**Blind or Low Vision Services:** Large print programs are available in the Quadracci Powerhouse and Stiemke Studio from any usher. Every Rep production has one **audio-described performance**. Using an earpiece attached to a small hand-held receiver, patrons hear a live, real-time description of the action on stage. Call the Ticket Office for more information.

**Wheelchairs** All Rep stages are fully accessible. Please contact the Ticket Office at **414-224-9490**.

### Late Arrivals

Out of courtesy to the actors and audience, patrons arriving after the performance has started will be seated at the discretion of House Management.

### Parking

Milwaukee Center offers onsite parking with indoor access to The Rep operated by InterPark. Enter from Kilbourn Avenue or Water Street.

### Policy on Children

Children under age seven are not admitted in the theater.

### Recording Equipment and Cameras

The use of recording equipment and cameras in the theater is strictly forbidden.

## MILWAUKEE REPERTORY THEATER

#DestinyOfDesireMKE @milwrep

**APRIL 21 - MAY 17, 2020 | QUADRACCI POWERHOUSE**

*Telenovela of **Passion and Deception**  
with Lively **Music and Dance!***

# DESTINY of Desire

*"Simply fabulous  
and riotously funny..."*  
**HIGHLY  
ENTERTAINING"**  
— Chicago Tribune

By Karen Zacarías  
Directed by José Luis Valenzuela



Sponsored by



**Rockwell  
Automation**

Executive Producers Rhonda & Greg Oberland

**www.MilwaukeeRep.com | 414-224-9490**

Photo by Tony Arrasmith/Arrasmith and Associates featuring Courtney Arango and Stephanie Gómez

# WE HAVE YOU COVERED: PRE-SHOW DINING TO POST-SHOW DRINKS



An all-day café serving American cuisine made simply, with great ingredients. Like your mom's cooking, but better.

## ARIA



A fast-casual Neapolitan style pizza joint that balances old-world character and modern design.



Have a laugh at Milwaukee's only  
champagne bar



## GIGGLY

**SAINT KATE — THE ARTS HOTEL**

139 EAST KILBOURN AVENUE — DOWNTOWN MILWAUKEE — [SAINTKATEARTS.COM](http://SAINTKATEARTS.COM)

**Mark Clements**  
Artistic Director



**Chad Bauman**  
Executive Director

**Jay Franke & David Herro Present**

# A CHRISTMAS CAROL

By **Charles Dickens**  
Adapted and Directed by **Mark Clements♦**

*Music Director*  
**Dan Kazemi ±**

*Scenic Designer*  
**Todd Edward Ivins ±**

*Costume Designer*  
**Alexander B. Tecoma**

*Lighting Designer*  
**Jeff Nellis ±**

*Sound Designer*  
**Barry G. Funderburg**

*Original Music Score*  
**John Tanner ±**

*Stage Movement Director*  
**Michael Pink**

*Dialect Coach*  
**Jayne Pink**

*Associate Director*  
**Leda Hoffmann**

*Casting Director*  
**Frank Honts**

*Make-up/Hair/Wig Designer*  
**Lara Leigh Dalbey**

*Stage Manager*  
**Rebecca Lindsey\***

November 26 – December 24, 2019  
Pabst Theater

Generously Sponsored by



Associate Producers  
**Gretta Assaly**  
**Molly & Tom Duffey**

Media Sponsor



Equipment Sponsor



Sponsored in Part By



♦ A member of Stage Directors and Choreographers Society, an independent national labor union.

± Milwaukee Repertory Theater Associate Artists.

\*Member of Actors' Equity Association, the Union of Professional Actors and Stage Managers in the United States.

## CAST

Charles Dickens, Ebenezer Scrooge.....	<b>Jonathan Wainwright*</b>
Alice.....	<b>Isabella Abel-Suarez</b>
Caroline.....	<b>Carly Christensen</b>
Ghost of Marley, Gentleman, Old Joe .....	<b>Mark Corkins*</b>
Belle, Ellen's Sister.....	<b>Arya Daire*</b>
Ghost of Christmas Present, Thomas' Father .....	<b>Todd Denning*</b>
Nanny .....	<b>Lauryn Glenn</b>
Fred, Gentleman .....	<b>DiMonte Henning*</b>
Mrs. Fezziwig, Assistant to Dickens, Charitable Worker, Mrs. Dilber .....	<b>Angela Iannone ±*</b>
Ellen, Cook .....	<b>Brooke Johnson</b>
Bob Cratchit.....	<b>Reese Madigan ±*</b>
Young Scrooge, Assistant to Dickens, Topper, Caroline's Husband .....	<b>Christopher Peltier*</b>
Mr. Fezziwig, Charitable Worker, Gentleman.....	<b>James Pickering ±*</b>
Dick Wilkins, Ghost of Christmas Future .....	<b>Joshua Ponce</b>
Mrs. Cratchit, Thomas' Mother .....	<b>Rána Roman*</b>
Belle's Husband .....	<b>Gilberto Saenz</b>
Ghost of Christmas Past, Ellen's Sister .....	<b>Tami Workentin*</b>
Ensemble.....	<b>Alexander Hatcher, Austin Winter</b>

## YOUNG PERFORMERS

Ignorance .....	<b>Coco Archuleta</b>
Martha Cratchit .....	<b>Isabel Bastardo</b>
Thomas.....	<b>Zachary Church</b>
Tiny Tim .....	<b>Cecelia Golbuff</b>
Peter Cratchit .....	<b>Jakobie Jackson</b>
Teen Scrooge .....	<b>Liam Jeninga</b>
Belinda Cratchit.....	<b>Zion Lavoe</b>
Emily Cratchit.....	<b>Ziva Lavoe</b>
Fan .....	<b>Maya O'Day-Biddle</b>
Turkey Boy.....	<b>Lina Singh</b>
Mathew Cratchit .....	<b>Cole Sison</b>
Want.....	<b>Quinn Sison</b>
Sniffer.....	<b>Jack Trettin</b>
Boy Scrooge .....	<b>Casey Westphal</b>
Ensemble.....	<b>Teddy Anagnostopoulos, Amalia Cecsarini, Phinlee Clarkin, Zachery Lavoe, Cody Sims</b>

Members of the cast also appear as Party Guests, Fezziwig Workers, Carolers, Belle's Children, Caroline's Children and other citizens of 19th century England.

## UNDERSTUDIES:

For Jonathan Wainwright – **Reese Madigan\***; Carly Christensen, Lauryn Glenn, Brooke Johnson and Tami Workentin – **Isabella Abel-Suarez**; Angela Iannone and Brooke Johnson – **Carly Christensen**; Arya Daire and Rána Roman – **Lauryn Glenn**; Mark Corkins, DiMonte Henning, Joshua Ponce and Gilberto Saenz – **Alexander Hatcher**; Isabella Abel-Suarez and Arya Daire – **Brooke Johnson**; Christopher Peltier – **Joshua Ponce**; Todd Denning and James Pickering – **Gilberto Saenz**; Reese Madigan, Alexander Hatcher and Joshua Ponce – **Austin Winter**

Understudies never substituted for listed players unless a specific announcement is made prior to the performance.

***A Christmas Carol will be performed with one intermission.***

The videotaping or other video or audio recording of this production is strictly prohibited.

± Milwaukee Repertory Theater Associate Artists.

\* Member of Actors' Equity Association, the Union of Professional Actors and Stage Managers in the United States.



# We make learning fun!



Bring your family for a day of fun and learning! Explore hands-on exhibits, our aquarium featuring fresh and saltwater tanks, DIY projects in the Kohl's Design It! Lab, and more!



**DISCOVERY WORLD**  
science + technology center

500 N. Harbor Drive | Milwaukee, WI 53202  
[discoveryworld.org](http://discoveryworld.org)



**Our Auberge communities support, engage, and encourage the whole individual who is living with a memory impairing disease.**

We are an all inclusive memory care living community that provides:

- **24 Hour Nursing - On Site**
- **Purpose Driven, Life Enriching Programs**
- **Restaurant Style, Quality Dining**
- **Pet Friendly Environment**

***Walk In Tours Are Always Welcome!***

**The Auberge at Oak Village**

W128N6900 Northfield Dr  
Menomonee Falls | 262 532-0800

**[aubergeoakvillage.com](http://aubergeoakvillage.com)**

**The Auberge at Brookfield**

1105 Davidson Rd  
Brookfield | 262 641-9020

**[aubergebrookfield.com](http://aubergebrookfield.com)**

## PRODUCTION SUPPORT

---

Assistant Stage Manager .....	<b>Kimberly Carolus*</b>
Stage Management Fellow .....	<b>Josh Hart</b>
Young Performer's Stage Manager .....	<b>Krista Kanderski</b>
Assistant Director .....	<b>Kelsey Robins</b>
Dance Captain .....	<b>Rána Roman</b>
Orchestrations .....	<b>Larry Moore</b>
Associate Lighting Designer.....	<b>Jason Fassl</b>
Assistant Sound Designer .....	<b>Michael J. Patrick</b>

## SPECIAL THANKS

---

To the staff of The Pabst Theater.

**The cast of *A Christmas Carol* would like to dedicate  
the run of the show to Lara Leigh Dalbey.**

## PRODUCTION STAFF

---

Director of Production.....	<b>Jared Clarkin</b>
Associate Production Manager .....	<b>Kaitlyn Anderson</b>
Co-Technical Director .....	<b>John Houtler-McCoy</b>
Co-Technical Director.....	<b>Sean Walters</b>
Properties Director.....	<b>Jim Guy</b>
Charge Scenic Artist .....	<b>Jim Medved</b>
Costume Director .....	<b>Nicholas Hartman</b>
Lighting & Video Director .....	<b>Aaron Lichamer</b>
Sound Director .....	<b>J Jumbelic</b>
Production Stage Manager .....	<b>Kimberly Carolus*</b>
Line Producer .....	<b>Frank Honts</b>

Milwaukee Repertory Theater operates under an agreement between the League of Resident Theatres and Actors' Equity Association, the Union of Professional Actors and Stage Managers in the United States. The scenic, costume, lighting and sound designers in LORT Theatres are represented by United Scenic Artists, Local USA-829 of the IATSE and our stagehands and carpenters are members of Milwaukee Theatrical Stage Employees' Union IATSE Local 18. The Rep is an equal opportunity employer. Milwaukee Rep is proud to be a member of The United Performing Arts Fund (UPAF), which provides major annual financial support.



# The art of performance draws our eyes to the stage



Our community's commitment to arts and culture says a lot about where we live. Theater brings us together from the moment the lights go down and the curtains come up.

**A Christmas Carol cast, we applaud your performance.**

**wellsfargo.com**

© 2018 Wells Fargo Bank, N.A.  
All rights reserved. IHA-21836

**Together we'll go far**





## A NOTE FROM THE ARTISTIC DIRECTOR

---

Milwaukee Rep's numerous productions of *A Christmas Carol* have gone on quite a journey. Starting in the 1976/77 Season, adaptations of this brilliant, and still most necessary, Charles Dickens novella, have graced the Pabst Theater every year since. Including this adaptation, which I wrote as part of the *John (Jack) D. Lewis New Play Development Program*, that premiered in the 2016/17 Season.

This makes our telling of *A Christmas Carol* the second-longest, continuous running professional production of the show in the USA – quite a feat! To say that *A Christmas Carol* is a Milwaukee tradition is an understatement: going into our 44th production, it has now become engrained as a premiere, festive, family entertainment in our city. The idea of it not being here every year is almost as inconceivable as not celebrating the holiday season itself, so we thank you all wholeheartedly for being here today and helping to continue and support this wonderful tradition.

Though “Christmas” is in the title of the piece, I don’t believe Dickens fully intended this story to be specifically religious, but rather a moral and social tale with warnings. Its central themes of being present, living in the moment, putting the love of family and friends over material gain, and striving for goodness and generosity every day of the year, transcend seasons, eras, denominations, and cultures. The lessons learned through Scrooge’s perilous journey, and close brushes with the nature of mortality, are ones intended to help inform us of how we might best live our lives on a day-to-day basis, thus making it a perennial tale of relevance.

These messages have also strongly resonated with our company most recently, with the sad loss of **Lara Leigh Dalbey**, a much-loved member of our Rep family, and Wig Master and Makeup Supervisor for over 20 years. Lara’s impact on both our theater and the lives of the people who came through Milwaukee Rep’s doors is immeasurable. She especially had an enormous artistic influence on *A Christmas Carol* serving as the Makeup/Hair/Wig Designer. Although we mourn the loss of such a talented artist and friend, taken from us far too young, we are warmed and overwhelmed by the outpouring of love from all those that knew her and will now miss her so greatly. As a small tribute, we dedicate this year’s production of *A Christmas Carol* to Lara, her family, and theater family in Milwaukee, Wisconsin, and beyond.

Even in the darkest times, there is light. It is always a bright spot in our year to assemble the *A Christmas Carol* team who bring so much enthusiasm and energy to the production. The show is not only a tradition for our audiences, but for our artists as well, many of whom are reprising their roles from previous seasons. The show also features our largest young performer ensemble, and we are thrilled to watch year-to-year as these young actors grow in their craft - some joining our *Professional Training Institute* or *Emerging Professional Residency Program*, some taking on principle parts in this show and other Rep productions, some even going on to have successful professional acting careers around the country. From our audiences to our artists, *A Christmas Carol* truly enjoys a great legacy.

Whether you’re continuing a tradition tonight, or starting a new one, we hope you find as much joy in watching *A Christmas Carol* as we had in making it.

Wishing you and yours all the very best for the festive season and a Happy New Year.

Mark Clements  
Artistic Director

# Journal Sentinel subscribers get more!



## All subscriptions include unlimited access to:

- **JSOnline.com:** Wisconsin's #1 website for late-breaking news, in-depth coverage, blogs, photo galleries and more
- **Journal Sentinel e-Edition:** Online replica of the printed newspaper to view today's edition or previous issues
- **Smartphone and Tablet Apps:** View news and special features while on the move

If you haven't activated your account yet, it's fast and easy! Visit [jsonline.com/activate](http://jsonline.com/activate) today!

**journal sentinel**  
PART OF THE USA TODAY NETWORK

Not a subscriber yet? Visit [jsonline.com/offers](http://jsonline.com/offers)

# Mpact Tickets

December 2019

## Dear Friends,

Once again all of us at Milwaukee Rep are delighted to thank the **Patty and Jay Baker Foundation** for their generosity and commitment to the children of our community. Milwaukee Rep's annual production of Charles Dickens' *A Christmas Carol* has brought joy to thousands of children and adults every holiday season. In addition, **Kathleen Seidel** has joined the **Baker Foundation** in supporting our efforts which enables Milwaukee Rep to provide over 2,500 tickets to youth and families through the Mpact Ticket program.

Our warm thanks to the Bakers and to Kathleen Seidel for their generous holiday gift to our community.

Happy Holidays!

**Chad Bauman**

*Executive Director*



Jonathan Wainwright.  
Photo by Michael Brosilow.

Through the support of the Patty and Jay Baker Foundation and Kathleen Seidel, Milwaukee Rep is able to provide tickets to a host of organizations including those listed below. Additional organizations were still being finalized at the time of printing this program.

### Adult & Teen Challenge

AFS-USA

Big Brothers Big Sisters

Boys and Girls Club of Greater Milwaukee

Children's Hospital of Wisconsin

CR-Social Development Commission

Dominican Center

Escuela Verde

Feast of Crispian

Gerald L. Ignace Indian Health Center

Independence First

### La Causa, Inc

Layton Boulevard Gardens

Near West Side Partners

Safe & Sound

Tamarack Waldorf School

UMOS, inc

United Community Center

USO Wisconsin

UW-Extension Waukesha

UW-Waukesha Pre College



**THE PERFECT GIFT FOR  
ANYONE ON YOUR LIST!**

# *Rep Gift Certificates!*

## ***Easy and Affordable!***

It's easy to check off the loved ones on your holiday list when you give the gift of live theater. Buy gift certificates or flex passes (vouchers which can be redeemed for most Rep performances\*) in any amount.

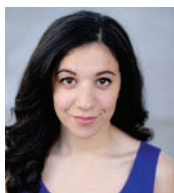


**www.MilwaukeeRep.com | 414-224-9490**

\*Not valid for performances of *A Christmas Carol*. Other season specific restrictions apply.



## BIOGRAPHIES



**Isabella Abel-Suarez,**  
*Alice*

Isabella recently graduated from Southern Utah University with her BFA in theatre and a minor in dance performance. At SUU, she played Alexi Darling in (and was dance captain for) *Rent*, various roles in *The Laramie Project*, Bielke in *Fiddler on the Roof*, Veronica Sawyer in *Heathers* and Charles Guiteau in *Assassins*. She spent an amazing summer at the Utah Shakespeare Festival where she was in the ensemble of *The Greenshow* and Lancelot Gobbo in an acclaimed production of *The Merchant of Venice*. Isabella also works as Executive Assistant for StateraArts, an organization dedicated to bringing women+ into full and equal participation in the arts. She most recently played Consuela in The Rep's production of *West Side Story*.

**Residency sponsored by Connie and John Kordsmeier.**



**Teddy Anagnostopoulos,**  
*Ensemble*

Teddy is overjoyed to be joining the cast of *A Christmas Carol* for his fifth consecutive year in the production. He is a junior at Menomonee Falls High School where he runs cross country and is involved in the theater program. He would like to thank his family and friends for their continuous love and support.



**Coco Archuleta,**  
*Ignorance*

Coco is thrilled to again be part of *A Christmas Carol* for a second season! She recently performed in *Shrek The Musical JR.* at Maple Dale School as well as

in their choir. This year Coco was selected to perform at the Maestro Makers recital at the Cedarburg Cultural Center singing "Castle on a Cloud." She is ten years old and in the fifth grade. Coco also enjoys her hedgehog Pickles, painting and acting. Coco wants to thank the directors and crew for the opportunity to be a part of this production.



**Isabel Bastardo,**  
*Martha Cratchit*

Isabel Bastardo is a junior at Golda Meir High School and is so excited to be back for her second year in *A Christmas Carol* as Martha Cratchit! She was last in Milwaukee Rep's *West Side Story* (ensemble) and the PTI production of *Everybody* (Cousin/ Somebody). Other recent productions include *Tinker Bell* (Pirate) at First Stage Children's Theater and *As You Like It* (Sir Oliver Martext/First Lord) with First Stage's Young Company. When not acting, Isabel loves to dance. She is grateful for the support of her family, friends and mentors.



**Amalia Cecesarini,**  
*Ensemble*

Amalia is thrilled to participate in *A Christmas Carol* for the fourth time! She has performed in many shows such as *The Best Christmas Pageant Ever* and *Schoolhouse Rock*. Amalia also enjoys soccer and has been dedicated to gymnastics for seven years. She is 12 years old and attends Whitefish Bay Middle School. Amalia hopes that you enjoy the show and have a great 2020!



**Carly Christensen,**  
*Caroline*

Carly is an actor, fitness enthusiast and aspiring intimacy choreographer. Recently equipped with an MFA, select

university credits include Diana in *Next to Normal*, Miss Casewell in *The Mousetrap*, Mrs. Kate Sullen in *The Beaux' Stratagem* and Bev/Kathy in *Clybourne Park*. Past roles also include assistant violence designer, intimacy coordinator and fight captain. Carly is an alumna of Purdue and Willamette Universities. Find her online: IG @carlyychristensen, carlychristensen.com



**Zachary Church,**  
*Thomas*

Zach is grateful to be back as Thomas again this year! He is a 13-year-old eighth-grader. He's previously

performed with Milwaukee Repertory Theater in *Our Town* and *A Christmas Carol*. He has also performed with First Stage Children's Theater and Spotlight Productions. He most recently played the Telegram Boy in *Young Frankenstein*. Other roles include: Aladdin in *Aladdin Jr.*, Charlie Brown in *A Charlie Brown Christmas* and Les in *Newsies*. Zach has also had the opportunity to appear as a host on the television show "Into the Outdoors."



**Phinlee Clarkin,**  
*Ensemble*

Phinlee is a sixth-grader at Golda Meir where she just closed a school show, *Orphie and the Book of Heroes*. She is

overjoyed to return to *A Christmas Carol* again, where she played Belinda Cratchit and Turkey Boy last year. Other credits include: *Our Town* at Milwaukee Repertory Theater, *Tinker Bell* and *Ella Enchanted* at First Stage, *Annie* at Skylight Music Theatre and *The Nutcracker* at Milwaukee Ballet. She loves everything about singing, acting and dancing but when Phin is not on the stage, she enjoys playing tennis and violin, and swimming! Genießen sie diese wunderbare Produktion.



**Mark Corkins,**  
*Ghost of Marley*

Mark is happy to be returning to The Pabst for Milwaukee Rep's annual production of *A Christmas Carol*.

Other favorite Rep productions include: *Holmes & Watson*, *Cherry Orchard*, *King Lear*, *True West* and *Endgame*. Local audiences will recognize him from his work with: American Players Theatre, Milwaukee Opera Theatre, First Stage, In Tandem, Milwaukee Chamber Theatre, Next Act, Optimist Theatre and Collaborative Performance. Nationally Mark has appeared with the Utah and Illinois Shakespeare Festivals, Arena Stage, Berkeley Rep and SIT Company. This past summer Mark had the pleasure of playing Sir John Falstaff in *The Merry Wives of Windsor* with Door Shakespeare.



**Arya Daire,**  
*Belle*

Arya Daire is thrilled to return to the beautiful Milwaukee Rep! TV credits: "A Christmas Carol - The Concert"

(PBS), "Chicago Fire" (NBC). Theatrical credits: *An Enemy of the People* (Goodman Theatre), *Miranda* (Indiana Repertory), *A Disappearing Number* (TimeLine), *Julius Caesar* (Writers Theatre), *Suburbia* (U of Chicago), *Inana* (TimeLine), *Samsara* (Victory Gardens), *Principal Principle* (Stage Left), *Much Ado About Nothing* (Rasaka), *Big Lake*, *Big City* (Lookingglass), *Disconnect* (Victory Gardens) and *The 25th Annual Putnam County Spelling Bee* (Beverly Arts Center). Love to my mom and dad, friends (shout-out Pickles, Mande, Catfish, Lolo!) and to my beloved MM. Warmest thanks to Mark Clements, Leda Hoffmann and the brilliant, hard-working cast & crew of this show. Arya attended Northwestern University and is represented by Stewart Talent. [www.aryadaire.com](http://www.aryadaire.com)



**Todd Denning,**  
*Ghost of Christmas Present*

Todd is joyous and thankful to return to Milwaukee Rep for the holidays after

spending his sixth season with the Utah Shakespeare Festival, where he played Richard Burbage/Ben Jonson in *The Book of Will*, Sir Toby Belch in *Twelfth Night* and Banquo in *Macbeth*. Last season at The Rep, he appeared as Corrigan Wiley/Union Leader/Curt in *Junk*. Other credits include Milwaukee Chamber Theatre, Next Act Theatre, Skylight Music Theatre, Door Shakespeare, South Coast Repertory, Illinois Shakespeare, Willamette Rep, Milwaukee Shakespeare, Tennessee Rep, Georgia Shakespeare, In Tandem, Optimist Theatre and First Stage. For Mom.



**Lauryn Glenn,**  
*Nanny*

Lauryn is an actress, foodie and bookworm from Cleveland, Ohio. She has recently completed her BFA

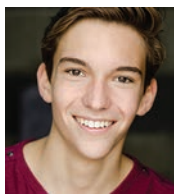
in Performance at Ohio University's College of Fine Arts. She is ecstatic to be joining Milwaukee Rep for their 2019/20 Season! During her academic career at Ohio University, Lauryn played Holly in *Holly Down in Heaven*, #11 in *The Wolves*, Anita/Rita/Reporter #1 in *La Mujer Barbuda* (World Premiere) and Win/Waitress in *Top Girls*. Lauryn completed a summer internship with Tantrum Theater, during which she understudied Jen in *The Cake*. Lauryn thanks her family, friends and mentors for their endless love and continuous support!



**Cecelia Golbuff,**  
*Tiny Tim*

Cecelia is thrilled to be participating in *A Christmas Carol*. While this is her first time on stage, Cecelia has

been singing, dancing and performing for friends and family since she was old enough to talk. Cecelia is seven years old and is a second-grader in Shorewood, WI. In her free time she likes to play with friends, ride her bike, make slime and play soccer. Cecelia would like to thank her mom and dad for letting her be a part of the production.



**Alexander Hatcher,**  
*Ensemble*

Alex recently graduated from Boston University's College of Fine Arts with a B.F.A. in Acting and concentrations

in Dance and Musical Theater. He also studied classical acting for one semester at the London Academy for Music and Dramatic Arts. Some of his recent stage credits include Baby John in Milwaukee Rep's *West Side Story*, 1776 (Lyman Hall), *Mr. Burns: A Post-Electric Play* (Gibson/Homer) and *Hamlet* (Hamlet). Originally from Wisconsin, Alex is very excited to return to the Midwest as an Emerging Professional Resident with Milwaukee Rep. He used to perform on many different stages in his beautiful home state as a featured dancer and singer of the "Kids from Wisconsin" touring troupe and as a young performer with First Stage and Skylight Music Theatre in Milwaukee. In his free time, he enjoys hiking, canoeing, traveling and sampling as many different foods on a stick as the Wisconsin State Fair has to offer. [AlexanderHatcher.com](http://AlexanderHatcher.com).

**Residency sponsored by Catherine and Buddy Robinson.**

MILWAUKEE REPERTORY THEATER

#GeorgiaMcBrideMKE @milwrep

JANUARY 14 - FEBRUARY 9, 2020

From  
"The King"  
to an all-out  
**Queen!**

The Legend Of  
**GEORGIA  
McBRIDE**

By Matthew Lopez | Directed by Meredith McDonough

"STITCH-IN-YOUR-SIDE  
**FUNNY!**

Full of sass and  
good spirits."

— The New York Times

SPONSORED BY  
 Associated Bank



EXECUTIVE PRODUCERS  
Melanie and Steve Booth

ASSOCIATE PRODUCER  
Robert Burrell

Sponsored in part by:  
  
UNITED WE CAN DO GREAT THINGS

[www.MilwaukeeRep.com](http://www.MilwaukeeRep.com) | 414-224-9490





**DiMonte Henning,**  
*Fred*

A native of Milwaukee, WI, DiMonte received his formal theatre training from UW-Milwaukee with additional training from Milwaukee Repertory Theater's Emerging Professional Residency. DiMonte serves as Producing Artistic Director of performing arts organization, Lights! Camera! Soul! His recent credits include: First Stage's productions of *Big River: The Adventures of Huckleberry Finn* and *The Wiz*. Milwaukee Repertory Theater's productions of *Junk*, *Our Town* and *Dreamgirls*. *Skeleton Crew* (Forward Theater Company), *Black Nativity* (Black Arts MKE), *Deathtrap* (Milwaukee Chamber Theatre) and *A Midsummer Night's Dream* (Theatre LILA). TV credits include: NBC's "Chicago PD" (Seasons 4 & 6), UBER, Disney's "Encore!," Cousins Subs and Harley-Davidson. Next up: *Stick Fly* at Writers Theatre in Glencoe, IL.



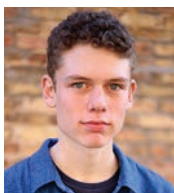
**Angela Iannone,**  
*Mrs. Fezziwig*

Angela Iannone returns to Milwaukee Rep, where she has been seen as Marie Lombardi in *Lombardi* and Louise in *Always, Patsy Cline*. Recent roles include Mattie Fae in *August*, *Osage County* for Delaware Resident Ensemble Players and Alexandra in *Velocity of Autumn* for In Tandem Theatre. Ms. Iannone is a Folger Shakespeare Library Research Fellow/Artist in Residence, a Lunt-Fontanne Fellow, a Hampden/Booth Library Researcher, an American Theatre and Drama Society Research Grant recipient and a Hendrix/Murphy Directing Fellow. Her plays, *This Prison Where I Live* and *The Seeds of Banquo*, have been produced at Titan Theatre, NYC and Theater RED, Milwaukee.



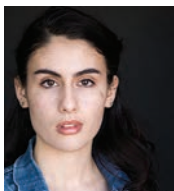
**Jakobie Jackson,**  
*Peter Cratchit*

Jakobie Jackson is so excited to be in the cast of *A Christmas Carol* for the third year. He is a junior at Golda Meir High School and he is a very great kid. He has a very high level of energy and hopes to be in *A Christmas Carol* for a long time. His biggest dream is to be on Broadway for Barack Obama and Michelle Obama and to continue theater at Juilliard.



**Liam Jeninga,**  
*Teen Scrooge*

Liam, a sophomore at Delavan-Darien High School, is so happy to be back for his third year in *A Christmas Carol*. Recently, he performed as the Dog in the opera *Brundibar* with RUACH, as Benedick in *Much Ado About Nothing* with First Stage's Company Class and as Ralph Herdman in *The Best Christmas Pageant Ever: The Musical* at First Stage. He also enjoys his role as treasurer for Milwaukee Rep's Teen Council and hopes to use the experience he gains there to support great theater in Milwaukee in the future.



**Brooke Johnson,**  
*Ellen/Cook*

Brooke is excited to be making her debut with Milwaukee Rep this 2019/20 Season. She originally hails from the sunny central coast of California and is a recent alum of The Pacific Conservatory Theatre's Professional Actor training program. Her most recent roles include: Estella in *West Side Story* (Milwaukee Rep), #11 in *The Wolves*, Woman #2/ Lady Eugenia in *A Gentleman's Guide to Love and Murder*, Brave Girl/Mrs. Darling (u/s) in *Peter Pan*, Ancestor/Swing in *The*

## BIOGRAPHIES CONT.

*Addams Family*, Programmer in *The (curious case of the) Watson Intelligence* (PCPA). **Residency sponsored by David and Madeleine Lubar.**



**Zachery Lavoe,**  
*Ensemble*

Zachery is thrilled to be in *A Christmas Carol*! This is his first theater production and he is excited to be part of

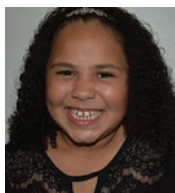
the ACC family! Zachery loves athletics and spends time playing football for Journey House and basketball with Fernwood Montessori. He even helped his soccer team win a shoot-out tie breaker in Ghana, West Africa! He's involved in Chess Club and Boy Scouts. Zachery volunteers preparing meals for our homeless community through Larry Under the Bridge. He is thankful for Milwaukee Rep for introducing him to his love for theater and his family for their support!



**Zion Lavoe,**  
*Belinda Cratchit*

Zion is honored to have this opportunity to be a part of *A Christmas Carol*. She previously played an ensemble role

in the First Stage Foundry presentation *On the Wings of a Mariposa*. Zion is very active in basketball, soccer, volleyball, archery, Chess Club, Girl Scouts and Lego Robotics. She volunteers regularly for Larry Under the Bridge providing meals for homeless community members. She aspires to be an anesthesiologist in the future! Zion would like to thank Milwaukee Rep for this opportunity and her family for supporting her interests!



**Ziva Lavoe,**  
*Emily Cratchit*

Ziva is excited to join the *A Christmas Carol* family and is grateful to Milwaukee Rep for the opportunity! She is an

artistic soul who likes to create, sing, dance and perform her way through the day! She loves to help others and volunteers to feed members of our homeless community through Larry Under the Bridge. Chess Club, Girls Scouts, reading and traveling the world are her hobbies. She hopes to be a veterinarian or pop star in the future! Ziva would like to thank her family and can't wait for them to see her perform!



**Reese Madigan,**  
*Bob Cratchit*

Reese is a proud Rep Associate Artist. Alongside Bob Cratchit, some favorite Rep roles include Brick, *Cat on*

*a Hot Tin Roof*; Biff, *Death of a Salesman*; Hornung, *Lombardi*; Edmund, *King Lear*; Cassio, *Othello*; Thomas, *Venus in Fur*. He has appeared in *Born Yesterday* at APT, *Silent Sky* and *Lombardi* at Next Act, *Russian Transport* and *Amelia* at Renaissance and in *Life Sucks* at Forward. He has played on and Off Broadway from Lincoln Center to the Public to Manhattan Theatre Club; and at fifteen different regional theatres, some several times over. Thanks again, Mark. This one's for my mom.



**Maya O'Day-Biddle,**  
*Fan*

Maya is humbled to return to Milwaukee Rep to spread holiday cheer in *A Christmas Carol*! A seventh-

grader at Whitnall Middle School, Maya is charismatic and outgoing and loves to perform. Recent shows include: *Hairspray*,



# CHRISTMAS

ISN'T JUST A  
HOLIDAY. IT'S A  
FEELING. AN  
EXPERIENCE. IT'S  
SOMETHING YOU  
SHARE WITH  
OTHERS, BUT FEEL  
DEEPLY WITHIN  
YOURSELF.

THERE'S A PLACE  
WHERE CHRISTMAS  
COMES ALIVE,  
WHERE THE  
STREETS ARE  
ADORNED WITH  
TWINKLING LIGHTS  
AND THE STORE  
WINDOWS ARE  
ARTFULLY  
DECORATED WITH  
HOLIDAY CHARM.

WHERE WARM  
SHOPS AND COZY  
RESTAURANTS  
LURE YOU IN FROM  
THE SNOWY  
SIDEWALKS.

STEP BACK IN TIME.  
REKINDLE YOUR  
HOLIDAY SPIRIT.  
SPEND SOME TIME  
THIS HOLIDAY  
SEASON IN  
CEDARBURG.



## CEDARBURG

WISCONSIN

FALL IN LOVE

*with Christmas*

FOR A COMPLETE SCHEDULE OF HOLIDAY EVENTS, SHOWS  
AND ACTIVITIES, VISIT [CEDARBURGCHRISTMAS.COM](http://CEDARBURGCHRISTMAS.COM)





## COUNTRY *Christmas*

OVERNIGHT GETAWAY PACKAGES

Starting At:

**\$184**

- Overnight accommodations in a Premier Guest Room
- 4 Water Park passes
- One carload admission to Country Christmas
- 1 large one-topping pizza, 1 order of garlic bread and 4 soft drinks
- 4 cookies and 4 cups of hot chocolate inside Christmas Village at Country Christmas



THE  
INGLESIDE  
HOTEL

*COUNTRY*  
*Christmas*

2810 Golf Road, Pewaukee, WI 53072 | 262.547.0201

[theinglesidehotel.com](http://theinglesidehotel.com)



## Safe, Organic and Natural Products for your Baby!

We have toys for all ages, baby carriers, cloth diapers,  
and so much more - GREAT HOLIDAY GIFTS!



**Save 20%**

on one reg. priced item  
purchased in-store  
with code ACC20

Exp. 1/31/20. Not valid w. other offers.

**Save 5%**

on your in-store or  
online purchase  
with code ACC5

Exp. 1/31/20. Not valid w. other offers.

**BEST TOY STORE IN SOUTHEAST WISCONSIN!**

**430 Main St. | Racine | 262-898-1305 | [rgnaturalbabies.com](http://rgnaturalbabies.com)**



## BIOGRAPHIES CONT.

Annie, Skylight Music Theatre; *The Wiz*, First Stage; *Fences*, *A Christmas Carol*, *The Color Purple*, Milwaukee Rep; and many others at First Stage and in the community. The most generous gift one can both give and receive this holiday season is kindness. Enjoy the show!



**Christopher Peltier,**  
*Young Scrooge*

Christopher is elated to be returning to Milwaukee Rep! Recent credits include Laertes in *Hamlet* and

Malcolm in *Macbeth* (Utah Shakespeare Festival), Freddie in *Noises Off* (Montana Shakespeare in the Parks), Will Shakespeare in *Shakespeare in Love* and Bertram in *All's Well That Ends Well* (Great River Shakespeare Festival). Regional credits include American Players Theatre, Illinois Shakespeare Festival, Door Shakespeare, Raven Theatre, The Gift Theatre, Riverside Theatre and six tours with Montana Shakespeare in the Parks and Schools. He attended the University of Minnesota/Guthrie Theater BFA Actor Training Program. Love, always, to his inspiring wife, Eliza Stoughton.



**James Pickering,**  
*Mr. Fezziwig*

Jim returns to Milwaukee Rep's *A Christmas Carol* for his twenty-eighth appearance. He originated the role of

*Bob Cratchit* in 1976, the inaugural year of the annual Yuletide treat. He has portrayed numerous characters in the ghost story, some of whom no longer exist, as Mark Clements' adaptation is the fifth version of the classic to be presented here in the historic Pabst Theater. He is very happy to be joined in this production by his wife, Tami Workentin, who will not only delight you as the Ghost of Christmas Past, but will manage, in spite of a frenetic

holiday schedule, to whip up a wonderful gourmet Christmas dinner at home in Bay View for Jim and their two young men, Jonah and Edan. *In memoriam* Lara Dalbey – dear friend and virtuoso.



**Joshua Ponce,**  
*Dick Wilkins/Ghost of Christmas Future*

Joshua is stoked to be making his Milwaukee Rep debut in this exciting season! He is

fresh off the plane from California, where he spent the last two years with PCPA Theaterfest training and appearing in *Freaky Friday the Musical* (Ensemble), *A Gentleman's Guide to Love and Murder* (Ensemble), *Peter Pan* (Twin 1), *The Theory of Relativity* (Curtis) and *The Addams Family* (Matador Ancestor). Endless Thank Yous to God, my family and friends for their love and support. [www.joshuaponce.com](http://www.joshuaponce.com)



**Rána Roman,**  
*Mrs. Cratchit*

Rána is a Milwaukee native and proud graduate of Milwaukee High School of the Arts. She is so grateful to be

returning to Milwaukee Rep alongside her Cratchit family. Most recently, Rána was seen in *In the Heights* (ensemble) and *Our Town* (Mrs. Webb) at Milwaukee Rep. Other credits include *On the Wings of a Mariposa* (Mámi) at First Stage, *Kiss Me Kate* (Lilli/Kate) and *Hot Mikado* (Yum-Yum) at Skylight Music Theatre, *Life Sucks* (Ella) and *Exit Strategy* (Janina) at Forward Theater of Madison, *Vanya and Sonia and Masha and Spike* (Cassandra) at Milwaukee Chamber Theatre and *Agnes of God* (Agnes) at Renaissance Theaterworks. This spring, Rána will be playing Eva Perón in *Evita* at Skylight Music Theatre. "Family not only need to consist of merely those with whom we share blood, but also for those whom we'd give blood." – Charles Dickens



drive. give. serve.™

# IT'S EASY TO GET INVOLVED

## DRIVE

*Become a Volunteer Driver Today!*

No matter where you live or work, seniors need help getting around town. Many seniors can't drive anymore and don't have someone local to help them.

## GIVE

*Contribute Gas Cards, Financial Support, & More!*

Your support helps us provide gas cards to volunteer drivers, recruit more volunteers, and, most importantly, make sure that seniors have a caring person to talk to each time they need help.

## SERVE

*Unable to Drive but Want to Help?*

There are still plenty of ways you can help reduce the need for transportation like simply picking up and delivering groceries to someone's home.



SENIORS IN MILWAUKEE COUNTY AND  
WAUKESHA COUNTY NEED YOUR HELP!



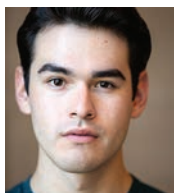
**Eras**

SENIOR NETWORK

engage. relate. advocate. support.

Visit [DriveGiveServe.org](http://DriveGiveServe.org)  
or call (262) 549-3348  
to learn more

[ErasWi.org](http://ErasWi.org)



**Gilberto Saenz,**  
*Belle's Husband*

Gilberto is thrilled to be making his debut at Milwaukee Rep! Originally from Donna, Texas, Gilberto graduated

with a B.A. in Theater Studies from Yale University. Previous credits include Chuck Biggs in *She Kills Monsters* (Yale DRAMAT/Yale Rep); Prior Walter in *Angels in America*, Archie Nunn in *So, I Killed A Few People...* and Miguel de Cervantes/Don Quixote in *Man of La Mancha*. Gilberto is an alumnus of the National Theatre Institute at the Eugene O'Neill Theater Center (Theatermakers Ensemble, 2018). He is so thankful to continue telling stories—this time in Wisconsin!



**Cody Sims,**  
*Ensemble*

Cody is thrilled to be returning to Milwaukee Rep for *A Christmas Carol*. Cody is a junior at Rufus King International

Baccalaureate High School. He is an only child, residing with his mother in Milwaukee. Recent high school credits include *Parents Just Don't Understand*, *Legally Blonde* and *The Jungle Book*. Cody has also been a part of the PTI (Professional Training Institute) at Milwaukee Repertory Theater. Cody has competed in the National Speech & Debate Association (NSDA) at both the middle school and high school level; his chosen categories were Impromptu Speaking, Poetry and Serious Solo Acting. He has won several awards at local and city competitions. In 2018, Cody placed 8 out of 112 participants competing in the category of Poetry at the State of Wisconsin High School competition. He was the only freshman to compete in the semi-final round for Poetry. Cody's future goals include winning the NSDA competition and completing college level courses in acting and literature while in high school.



**Lina Singh,**  
*Turkey Boy*

Lina, age 11, is thrilled to be making her Milwaukee Rep debut! Lina is a sixth-grader at Bayside Middle School

and has been in several First Stage productions: *Lilly's Purple Plastic Purse*, *Junie B. Jones Is Not a Crook*, *Judy Moody*, *The Best Christmas Pageant Ever* and most recently, *Elephant and Piggie*. When Lina isn't acting, she is likely reading, watching cheesy movies with her friends or singing. Lina would like to thank Kristen DiNinno, her FS academy teachers, Bayside Middle School, her friends and family, especially her brother Oscar and her dog Nancie, for their awesome support. Enjoy the show!



**Cole Sison,**  
*Mathew Cratchit*

Cole is very excited for his debut at Milwaukee Rep in the 2019 production of *A Christmas Carol*. His previous productions

with First Stage include *Mockingbird* as Michael, *A Charlie Brown Christmas* as Ensemble, *Nate the Great* as Harry and *The Foundry: A Girl of the Limberlost* as Billy. He would like to show appreciation to his family and friends for all their love and support. Big thanks to Milwaukee Rep for this exciting opportunity. Enjoy the show.



**Quinn Sison,**  
*Want*

Quinn is very grateful for this opportunity to be in *A Christmas Carol*. She is nine years old and is in fourth grade. She has

been in *The Best Christmas Pageant Ever* as the role of Ensemble Sheep at First Stage and *Everybody* as the roles of Girl and Time at Milwaukee Rep. Thank you to her family and friends for support and thank you to Milwaukee Rep for the opportunity.



**Jack Trettin,**  
*Sniffer*

Jack, a freshman at Whitefish Bay High School, is pleased to return for his seventh *A Christmas Carol* here at Milwaukee Rep. Previous theater credits include Joe/Si Crowell in *Our Town* (Milwaukee Rep) as well as Jeremy Potts in *Chitty Chitty Bang Bang* and Rudolph in *Rudolph the Red-Nosed Reindeer* at First Stage Children's Theater. When he is not on stage, Jack enjoys playing baseball. Jack would like to thank everyone at Milwaukee Repertory Theater for another magical holiday season.



**Jonathan Wainwright,**  
*Ebenezer Scrooge*

Jonathan is thrilled to see the *Carol* family again, to bring this story to the wonderful city of Milwaukee. In his fourth year playing Ebenezer, he feels the need in this world for positive redemption and reclamation is at an all-time high. The timeless sentiments in *A Christmas Carol*, told in the gorgeous warmth of the Pabst, is an event that can bring us all together for an evening and he is honored to be a part of it again this year. Merry Christmas, everyone. Bless us all.



**Casey Westphal,**  
*Boy Scrooge*

Casey is excited to be back for *A Christmas Carol* this year! Last seen in *Tinker Bell* and *Legally Blonde* at First Stage and the opera *Brundibar* with RUACH. Next stop, *A Wrinkle in Time* at First Stage. Casey's been blessed to have so many people who believe in him on his acting journey – on stage/TV/movies. He'd like to thank his voice teacher Adam Qutaishat, acting teachers Jeff Frank and Jeff Schaetzke, The

Rep team Frank Honts, Leda Hoffmann, Dan Kazemi, Jayne Pink, Mark Clements, the cast and crew for this incredible opportunity! And his "drivers" Amber, Jan, Chris, Shields, Granager and Sharon!



**Austin Winter,**  
*Ensemble*

Austin is happy to join Milwaukee Rep this season. Past credits include *Matilda*, *Romeo and Juliet* and *A Midnight Cry* (First Stage); *The Wiz*, *Godspell* (Hope Summer Repertory Theater); *Chicago* (Broadway Theater Project); and *Seussical* (Carthage China Tour). Austin has originated roles in *A Seat at the Table* (by Regina Taylor); *The Breath of Stars* (by Caridad Svich) and *Wherever You've Been* (by Caitlin DiGiacomo). Austin is a proud graduate of Carthage College and The Open Jar Residency in New York. Off the stage, he is a costume designer and a multimedia studio artist. Love and thanks to mom and dad. [www.austinwinter.com](http://www.austinwinter.com) @austwintermint 1Jn4:18. **Residency sponsored by Four Four Foundation.**



**Tami Workentin,**  
*Ghost of Christmas Past*

Tami celebrates 38 years as a working actress and is delighted to be involved in this year's telling of *A Christmas Carol*. She had the great pleasure of performing in the Yuletide favorite once before, as Mrs. Cratchit/Cook in 2002. Additional Milwaukee Rep credits include Louise in *Always...Patsy Cline*, Jean in *Good People* and Barbara DeMarco in *Shear Madness*. Additional Milwaukee credits include *Luna Gale* at Renaissance Theaterworks, *A Secret Mask* (alongside her husband Jim Pickering) at Next Act Theatre and various productions at Milwaukee Chamber Theatre, First Stage Children's Theater, Milwaukee Shakespeare and the Marcus



*Merry Christmas and Happy New Year!*



*Sicilian Pasta & Wood Fired Pizza*  
Southern Italian Restaurant

Serving Southern  
Italian Cuisine

Wood Fired Pizzas

Holiday parties of any size  
up to 100 people

3468 N. Oakland Ave | (414) 963-9623

See our website [atouchofsicily.com](http://atouchofsicily.com) for our hours and menu



Kevin A. Harry, O.D.

*Signature*  
EYE CARE

15300 WATERTOWN PLANK RD.  
ELM GROVE, WI  
(262) 786-9630

# Something New Is On The Horizon

- Spectacular apartment homes still available -



**Expansion Opens  
January 2020**



## The best in retirement living includes...

- A culturally respectful and intellectually stimulating community
- LifeStreams - our holistic person-centered approach to wellness
- A 67,000 sq ft Town Center

**Call 414-831-7300 today!**

LOOKING  
BACK ON  
**150**  
YEARS  
OF LOOKING  
FORWARD

---

**SAINT JOHN'S**  
ON THE LAKE

---

**[www.SaintJohnsMilw.org](http://www.SaintJohnsMilw.org) 414-831-7300**  
1840 North Prospect Avenue, Milwaukee

# Taking better care of yourself starts with finding the best doctors *to take care of you.*

INTERNAL MEDICINE



Kathleen Baugrud, M.D. John Betz, M.D. Matthew Connolly, M.D. Kevin DiNapoli, M.D. Deidre Faust, M.D. Maria Ignacio Vitug, M.D. Scott Jorgensen, M.D. Unchu Ko, M.D.



David Lucke, M.D. Rachel Oosterbaan, M.D. John Sandidas, M.D. Abraham Varghese, M.D. James Volberding, M.D.

SURGERY



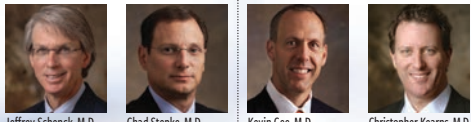
Daniel Butz, M.D. Richard Cattey, M.D. Jasna Coralic, M.D.

GASTROENTEROLOGY



Alyandra Lal, M.D. Joseph Regan, M.D. Craig Siverhus, M.D. Vincents Dindzas, M.D. Drew Elgin, M.D. Vijay Khiani, M.D. Venelin Kounuev, M.D. Srihari Ramanujam, M.D.

UROLOGY



Jeffrey Schenck, M.D. Chad Stepke, M.D. Kevin Gee, M.D. Christopher Kearns, M.D.

PULMONARY

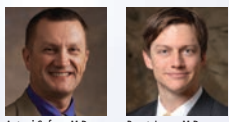


Dima Adl, M.D. Jay Balachandran, M.D. Burak Gurses, M.D.

ENDOCRINOLOGY



Amy DeGueme, M.D. Elaine Drobny, M.D.



Antoni Gofron, M.D. Brent Jones, M.D.



Kawaljeet Kaur, M.D., M.S.

MOHS SURGERY



Carmen Balding, M.D. Manish Gharia, M.D. Camile Hessel, M.D.



#### DERMATOLOGY



Amanda Cooper, M.D.



Tracy Donahue, M.D.



Valerie Lyon, M.D.



Jack Maloney, M.D.



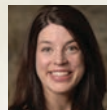
Jason Rosenberg, M.D.



Debra Scarlett, M.D.



Thorstein Skulason, M.D.



Heather Wells, M.D.

#### COMPREHENSIVE EYE CARE



Lisa Bennett, M.D.



Thomas Bloom, M.D.



Kenneth Fabric, M.D.



James Ivanoski, O.D.



Martha Jay, M.D.



Fred Shafir, M.D.



Anne Lent, M.D.



Kristin Schroeder, M.D.

#### ALLERGY & IMMUNOLOGY

**Finding the perfect practice can make all the difference in the world.**

When it comes to healthcare, you shouldn't settle for anything less than the perfect fit. You need physicians who are engaged. Who listen. Who spend time with you. We want to make a difference in your life, and the lives of your family. And it's one of the reasons why we are one of Milwaukee's most respected practices.

#### OBSTETRICS & GYNECOLOGY



Jonathan Berkoff, M.D.



Patricia Dollun, M.D.



Katya Frantskevich, M.D.



Jennifer Moralez, M.D.



**MADISON MEDICAL**  
MILWAUKEE · MEQUON

MadisonMedical.com | 414.272.8950





*Happy  
Holidays!*

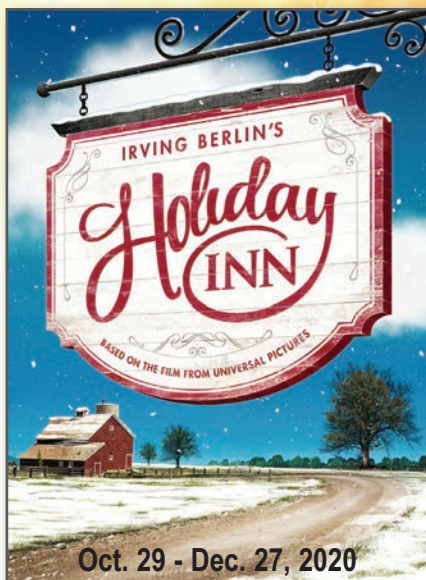
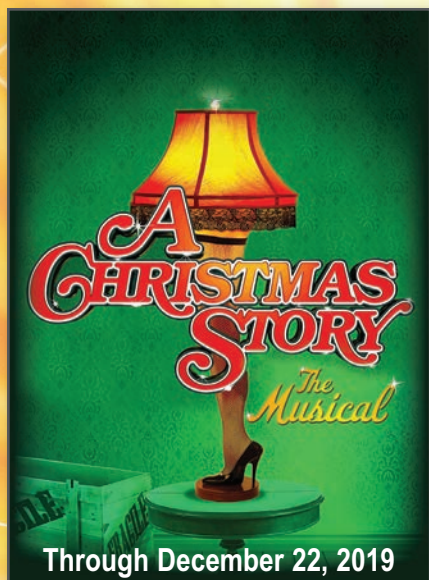
**+** *St. Camillus*

A Life Plan Community

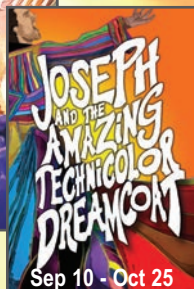
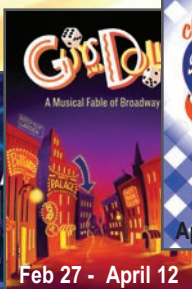
**Call to schedule your visit today.**

**414.259.6310**

# CHRISTMAS FUN FOR THE WHOLE FAMILY!



And a whole lot more fun all year long!



## The FireSide

Dinner Theatre

[www.firesidetheatre.com](http://www.firesidetheatre.com)

1131 Janesville Ave, Fort Atkinson, WI 53538 | 800-477-9505

Superb Musicals | Memorable Dining | Spectacular Shops | Fabulous Service

Center. Regional credits include Goodman Theatre, Court Theatre, Organic Theater, Bailiwick Repertory Theatre, Orlando Shakespeare Festival, Shakespeare-in-the-Park Fort Worth and Taproot Theatre.

### CREATIVE TEAM



**Mark Clements,**  
*Director*

Mark is an award-winning international theater director whose work has appeared in over 100 major theaters

throughout Europe and the United States. He began his tenure as Artistic Director with the 2010/11 Season by bringing musicals to the mainstage, starting a tradition that is now the highlight of every season, including *Cabaret*, *Next To Normal*, *Assassins*, *Ragtime*, *Dreamgirls*, *The Color Purple*, *Man of La Mancha*, *Guys and Dolls*, *In the Heights* and *West Side Story*. Milwaukee Rep directing credits include the world premieres of *One House Over*, his own adaptation of the current *A Christmas Carol*, *Five Presidents* and *American Song*. Also directed for Milwaukee Rep: *Things I Know To Be True* (American Premiere), *Junk*, *The Glass Menagerie*, *Of Mice and Men*, *Othello*, *Death of a Salesman*, *The History of Invulnerability*, *End of the Rainbow*, *Clybourne Park* and *Bombshells*. Some of his New York and international work includes *Speaking in Tongues*, *The Milliner* and *Blunt Speaking*, in addition to creating and directing the West End and UK National Tour of *Soul Train*. Prior to joining The Rep, Mark served as an Associate Artistic Director for several UK theater companies, most notably, Artistic Director for the award-winning Derby Playhouse in the UK from 1992 - 2002, where he directed over 40 productions. He has been nominated for an Olivier Award and several UK Theatre Awards, and has won three Barrymore

Awards from his time at Walnut Street Theatre in Philadelphia. He currently serves on the National Advisory Board for the Lunt-Fontanne Fellowship Program at Ten Chimneys. Mark is currently working with Ayad Akhtar on adapting his critically acclaimed novel *American Dervish* for the stage to make its world premiere at Milwaukee Rep in an upcoming season.

**Dan Kazemi,**  
*Music Director*

Dan is a New York-based composer, actor, director, orchestrator and music director. He is an Associate Artist at The Rep and *A Christmas Carol* is his 30th production here! He most recently directed *Ring of Fire: The Music of Johnny Cash* at The Rep's Stackner Cabaret and Actors Theatre of Louisville. His recent musical direction credits for Milwaukee Rep include *Nunsense*, *West Side Story*, *In the Heights*, *The All Night Strut!*, *Murder for Two*, *Guys and Dolls*, *Man of La Mancha* and *Dreamgirls*. In Philadelphia, Dan recently musically directed *Lizzie* (Barrymore Award), *Herringbone* (Barrymore Nom) and orchestrated and musically directed the world premiere musicals *Field Hockey Hot* (Barrymore Nom) and *Tulipomania*. Dan's music has been performed at SDC's Mr. Abbott Awards, Le Cirque de Demain in Paris, Ballet Fleming and in the 213 collective's collaborations *Untitled Project #213* and *Your Attention Please!*. Dan is also the composer of a new musical, *The Tapioca Miracle*.

**Todd Edward Ivins,**  
*Scenic Designer*

Todd's passion is telling stories through design. Milwaukee Rep scenic designs: *West Side Story*, *Junk*, *Of Mice and Men*, *Dreamgirls*, *Five Presidents*, *The Color Purple*, *The History of Invulnerability*, *Ragtime*, *Clybourne Park*, *Assassins*, *Next to Normal*. Scenic and costume designs include *Cabaret* & *Othello* (Milwaukee Rep) and *Dorian Gray* & *Mirror Mirror* (Milwaukee Ballet). Other Milwaukee credits include

## BIOGRAPHIES CONT.

---

Michael Pink's *Beauty and the Beast* (Milwaukee Ballet). Favorites include *The Illusionists: Turn of the Century* (Broadway, National & International Tour), *Circus 1903* (International Tour & Las Vegas residency at the Paris Casino). Todd designs dance, plays, musicals, television & corporate events, ranging from intimate events to arenas. Radiant love to my muses, daughter Agatha & wife Abigail. Visit Todd's online portfolio at [www.ivinsart.com](http://www.ivinsart.com).

### **Alexander B. Tecoma,** *Costume Designer*

Alex has been a Draper in Milwaukee Rep's costume shop for the past 23 seasons. *A Christmas Carol* is his 38th production at the Rep as costume designer. He was Rep Company Member of the Year for the 2004/2005 Season. Past designs at The Rep include *West Side Story*, *Ring of Fire*, *Songs for Nobodies*, *Guys and Dolls*, *Man of La Mancha*, *Dreamgirls*, *Liberace!* and *Ragtime*. Alex has designed costumes for Milwaukee Chamber Theatre, Renaissance Theaterworks, First Stage and Harley Davidson's 100th Anniversary Tour. Other professional credits include American Players Theatre, Great Lakes Theater Festival, Colorado Shakespeare Festival and Santa Fe Opera. He received his M.F.A. in Costume Design and Technology from University of Illinois. Alex is most proud of being part of the team that helped create "Stitching History from the Holocaust," an exhibit produced by the Jewish Museum of Milwaukee. <http://stitchinghistory.org/>

### **Jeff Nellis,** *Lighting Designer*

Jeff's Milwaukee Rep designs include *Ragtime*, *Assassins*, *Othello*, *Next to Normal*, *Death of a Salesman*, *Bombshells* and *Cabaret*. New York designs include Broadway's *Prymate*, Off-Broadway's *Tryst* (New York Outer Critics Circle Award nomination), *The Milliner*, *Zanna Don't!*, *The It Girl* and numerous others. He has worked around the country at theaters

including Center Stage Theater, Alley Theatre, Actors Theatre of Louisville, Cleveland Play House, Bay Street Theater, Walnut Street Theatre, Hartford Stage, Williamstown Theatre Festival, Westport Country Playhouse, Repertory Theatre of St. Louis, North Shore Music Theatre, Los Angeles Opera, Trinity Repertory Company, George Street Playhouse and others.

### **Barry G. Funderburg,** *Sound Designer*

Barry returns for his 22nd *A Christmas Carol* and his 80th Rep production. Memorable productions include *Our Town*, *Dreamgirls*, *Othello*, *The Seafarer*, *Pride and Prejudice*, *Mary Stuart* and *Angels in America*. Off-Broadway: *Wittenberg* at the Pearl Theatre Company. Regional theatre: Steppenwolf Theatre, Utah Shakespeare Festival, Alley Theatre, Kansas City Rep, Repertory Theatre of St. Louis, Arizona Theatre Company, Actors Theatre of Louisville, Baltimore Center Stage, Great Lakes Theater, Idaho Shakespeare Festival, Peninsula Players, American Players Theatre and Indiana Rep. Barry has received two Chicago Equity Jeff Awards, a St. Louis Theater Circle Award and an MFA in sound design from Purdue University.

### **John Tanner,** *Original Music Score*

John, a Milwaukee Rep Associate Artist, is a composer and sound designer. His experience covers a broad range of work in scoring, arranging and music composition for television, documentaries, radio, industrial video and theater. His original music has won numerous awards, including Golden Reel Awards, Telly Awards, national, regional and local American Advertising Federation Awards, Silver Microphone Awards. John has garnered Gold and Platinum sales certifications for his album engineering work. Projects include scores for NBC, ABC, Lionsgate, PBS and numerous theatrical productions





TRANSFER  
PIZZERIA • CAFÉ



# HALF OFF LG PIZZA

Show your theater ticket or Footlights program.

Offer Valid Until 1/12/20. Dine in only. Limit One.  
Not combined with any other offer.

101 W MITCHELL ST, MILWAUKEE, WI 53204



*Your wife needs jewelry!*



# STEIN'S JEWELRY

*has a huge section of antique and estate jewelry.*

We can make that custom piece of jewelry she has been dreaming of at a price that will make you happy!

*She wants you to trade in her smaller pair...*



**Stein's Jewelry and Loan**

715 W. Wisconsin

(7th and Wisconsin Downtown)

Since 1933 • 414-272-2356

*Call for hours.*

*Let us know you saw this ad. We want to know if this advertising is working.*

## BIOGRAPHIES CONT.

---

around the country. Recent work includes the Milwaukee Public Museum and the Milwaukee Symphony Orchestra. Email: johnt@tannermonagle.com

### **Larry Moore,** *Orchestrations*

Larry, a composer, arranger and producer from the Milwaukee area, is most widely known for his extensive catalog of arrangements for orchestra, published and distributed through the Hal Leonard Corporation. His commissions have been performed by orchestras in Milwaukee, Phoenix, Chautauqua and Indianapolis. In addition, his published works have been performed throughout the United States as well as worldwide, including orchestras in Belfast, Bremen, Milan, Prague and Slovenia. He has composed orchestra scores for television shows such as "ER," "Fear Factor," "The Gilmore Girls" and "Nightline." He is also a studio musician and has produced and played on dozens of projects, including numerous CD's for Hal Leonard. In live performance Larry has worked with such notable figures as Bob Hope and Cab Calloway. He also currently performs with his own jazz ensemble.

### **Michael Pink,** *Stage Movement Director*

Michael Pink is the Artistic Director of the Milwaukee Ballet. He is a prominent member of the Milwaukee arts community, demonstrating his commitment to the future of dance through new work, education and collaboration. His work has been presented in Europe, Asia, America and Canada. PBS broadcast his production of *Peter Pan* nationally in 2014. His production of *Romeo & Juliet* was also filmed by MPBS. He trained at The Royal Ballet and worked with English National Ballet, The Paris Opera and La Scala, Milan. His credits with Milwaukee Rep include *A Christmas Carol*, *Assassins*, *Cabaret* and *Next to Normal*.

### **Jayne Pink,** *Dialect Coach*

Jayne is delighted to join the team and wonderful cast once more! She has previously coached on *The Norman Conquests* and *Happy Now?* for Milwaukee Rep. She has recently enjoyed choreographing the productions *Chitty Chitty Bang Bang*, *Matilda*, *Elephant and Piggie* and *Urinetown* for First Stage Children's Theater. Born in London, Jayne has spent much of her professional life as a dancer. She is best known for her created roles and close collaboration with Christopher Gable and Michael Pink. She has since acted as répétiteur and coach for Milwaukee Ballet, Boston Ballet, Royal New Zealand Ballet, Norwegian National Ballet and Colorado Ballet Company. She is also the director of the Pilates program for Milwaukee Ballet.

### **Leda Hoffmann,** *Associate Director*

This is Leda's sixth *A Christmas Carol*, having directed last season, associate directed in 2017, 2016 and 2014 and assistant directed in 2010. Other Milwaukee Rep directing credits include *Black Pearl Sings*, *Lady Day at Emerson's Bar and Grill* and *The Amish Project*. Leda has also directed at Illinois Shakespeare Festival, Luminous Theatre, Milwaukee Chamber Theatre, Renaissance Theaterworks, Texas Shakespeare Festival, Mudlark Theater, Door Shakespeare and Alchemist Theatre. Leda is the Artistic Director of Strawdog Theatre Company in Chicago, a proud graduate of Grinnell College, a former Milwaukee Rep Directing Intern, SDCF Observer and a member of Lincoln Center Theater Directors Lab. Upcoming: *Welcome to Keene, New Hampshire* (Strawdog). [www.ledahoffmann.com](http://www.ledahoffmann.com)

### **Frank Honts,**

*Casting Director, Line Producer*

Frank is Director of Artistic Personnel at Milwaukee Rep. Prior to joining The Rep staff in 2016, Frank worked at a number of regional theaters including Utah Shakespeare Festival, Renaissance Theaterworks, The Goodman, California Shakespeare Theater, A Contemporary Theatre (Seattle), and Paramount Theatre. He has worked extensively as both a director and dramaturg, and was honored to be a directing resident at Milwaukee Rep in the 2013/14 Season. Frank spent two seasons as Artistic Associate at Forward Theater Company in Madison, and he was the inaugural recipient of the Michael Flachmann Fellowship at Utah Shakespeare Festival. He is a graduate of Brown University in Providence, Rhode Island. Frank would like to thank Casting Assistants Thaddeus Kaszuba, Dylan Sladky and Sara Zientek, whose dedicated efforts have helped make this season possible.

### **Lara Leigh Dalbey,**

*Make-up/Hair/Wig Designer*

Lara was a Milwaukee Rep artisan for more than 20 years. Her wigs and make-up design grace the stage of the Pabst Theater for the 21st time in *A Christmas Carol*. Her work has also been seen at Arizona Opera, Skylight Music Theatre, Opera in the Ozarks, American Players Theatre and Writers Theatre. Lara passed away unexpectedly in late October. Her friends at Milwaukee Rep and in the Greater Milwaukee community miss her dearly.

### **Rebecca Lindsey,**

*Stage Manager*

This is Becca's seventh holiday season working on *A Christmas Carol*! Having started off her career as a Milwaukee Rep intern in 2005/06, she has enjoyed working on a variety of projects with The Rep in the years since, with highlights including *Things I Know To Be True* and *An Iliad*. In addition, Becca has spent 13

seasons with American Players Theatre as a Stage Manager and Core Tech company member. Recent favorite SM credits there include *A Doll's House* and *A View from the Bridge*. Thanks to this group of humans for being such a JOY to work alongside!

### **Kimberly Carolus,**

*Assistant Stage Manager*

Kimberly is delighted to be returning to the *A Christmas Carol* stage management team for her seventh holiday season in Milwaukee! Some favorites from her seven seasons at The Rep include *West Side Story*, *In the Heights*, *The Chinese Lady*, *An Iliad* and *after all the terrible things I do*. Kimberly has also worked at Great River Shakespeare Festival, First Stage, Fulton Theatre, Riverside Theatre in the Park (Iowa City, IA) and Walt Disney World. She would like to thank her family and S for their endless love and support.

### **Josh Hart,**

*Stage Management Fellow*

Josh is delighted to return to Milwaukee Rep as the Stage Management Fellow this season. Last season as a Stage Management Resident he worked on a variety of shows, including *In the Heights*, *A Christmas Carol*, *The Chinese Lady* and *Rep Lab*. Before coming to Milwaukee, he attended the University of Chicago, where he stage managed such shows as *Peter and the Starcatcher*, *For Colored Girls Who Have Considered Suicide When the Rainbow Is Enuf* and a burlesque-inspired circus showcase.

### **Krista Kanderski,**

*Young Performers' Stage Manager*

Krista is delighted to join Milwaukee Rep as an Emerging Professional Resident this season. She is a recent graduate of Marquette University with a B.A. in Sociology and minors in Theatre Arts, Biology, and Culture, Health, & Illness. Born and raised in Milwaukee, she has worked with several companies in the



IT'S NOT A **PARTY** IF YOU DON'T INVITE MA!

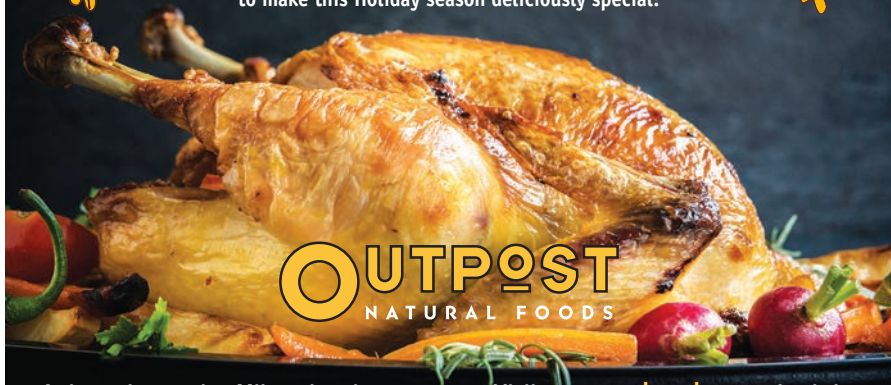


[WWW.MABAENSCH.COM](http://WWW.MABAENSCH.COM)

## Holidays with Outpost!

When it comes to celebrating the Holidays no one does it better than Outpost!

We know you're busy that's why we have all your holiday side dishes and desserts covered with made-from-scratch items from our prepared foods department. Outpost has whatever you need to make this Holiday season deliciously special!



4 stores in greater Milwaukee to serve you. Visit [www.outpost.coop](http://www.outpost.coop) for info.



**Mac's  
PET DEPOT  
BARKERY**

2197 S. Kinnickinnic Ave. | 414.294.3929  
[macspetdepotbarkery.com](http://macspetdepotbarkery.com)

"When all Americans are treated as equal,  
no matter who they are or whom they love,  
we are all more free." —Barack Obama

**MKE LGBT**  
COMMUNITY CENTER  
Be yourself

The Center delivers educational, health promotion and community-building services that meet the needs of LGBT youth, adults and their allies in the Greater Milwaukee area.

1110 North Market Street,  
Second Floor, Milwaukee,  
414.271.2656 | [mkeLGBT.Org](http://mkeLGBT.Org)

MILWAUKEE REPERTORY THEATER  
COMING SOON TO THE STACKNER CABARET!

**Celebrate  
the Blues**

*in this exploration of the  
inspiring story of Grafton,  
WI's Paramount Records.*

**JAN.17 to  
MAR.22,  
2020**

SPONSORED BY:

**HUSCH  
BLACKWELL**

CHASIN' DEM  
**BLUES**

UNTOLD STORY OF **PARAMOUNT RECORDS**

Written and Directed by **Kevin Ramsey**

**"VIBRANT!"**

— *Shepherd Express*

EXECUTIVE PRODUCERS: **Amy and Fred Croen,  
David and Cheryl Walker, Stacy and Blair Williams**

ASSOCIATE PRODUCER: **Jennifer and Mark Niedfeldt**



A **JOHN (JACK) D. LEWIS** NEW PLAY DEVELOPMENT PROGRAM PRODUCTION

**Hootenanny:**  
THE MUSICAL

By **David M. Lutken** | Directed by **Sherry Lutken**

**"AN AMERICAN  
ORIGINAL"**

— *The New  
York Times*

**MAR.27 to  
MAY 24, 2020**

EXECUTIVE PRODUCERS: **Adlon Partnership  
Chris and Judi Collins, Cheryl and Bill Guc**

ASSOCIATE PRODUCER: **Dr. Eric Durant**

**World Premiere Event**



THE CAMILLE & DAVID KUNDERT STACKNER SEASON

**www.MilwaukeeRep.com | 414-224-9490**

area including Milwaukee Chamber Theatre, the Sharon Lynne Wilson Center for the Arts, The Constructivists and Voices Found Repertory. Recent stage management credits include *truth: The Testimonial of Sojourner Truth*, *Shakespeare in Love* and *Murder for Two* (Hope Summer Repertory Theatre). [www.kristakanderski.com](http://www.kristakanderski.com)

**Kelsey Robins,**  
*Assistant Director*

Kelsey Robins is a recent graduate of Northwestern University, where she majored in Theatre and Legal Studies and minored in Comparative Literature. Directing highlights included *Cabaret*, *Ghost Quartet* and an all-female production of *1776*. She also served as the Executive Director of Northwestern's classic and classically inspired theatre group, Lovers & Madmen. As an Assistant Director, Kelsey has worked on *King Lear*, *All's Well That Ends Well* (Hip to Hip); *A Chorus Line*, *Vinegar Tom* (Northwestern University); and as Assistant to the Director on *The Music Man* (Goodman Theatre, dir. Mary Zimmerman).



**Chad Bauman,**  
*Executive Director*

Appointed in 2013, Chad is now in his seventh Season at Milwaukee Rep. Under his guidance, the theater has grown

significantly from a \$9M organization to a \$13M organization. He's completed two capital campaigns, one to remodel and expand the Stackner Cabaret and the other to build the endowment, launch the John (Jack) D. Lewis New Play Development Program, create a new *A Christmas Carol* and deepen the theater's community engagement programs. Through his efforts, the theater has been awarded UPAF's Good Steward Award four out of the last six years and became the only performing arts organization in Wisconsin with a 4 star rating from Charity

Navigator. Before moving to Milwaukee, he was the Associate Executive Director at Arena Stage in Washington, DC, where he was instrumental in opening the Mead Center for American Theater, a 200,000 square feet, three theater performing arts complex dedicated to American voices and playwrights. While at Arena Stage, he worked on the Broadway transfers of *Next to Normal* (Pulitzer Prize; Tony Award), *Who's Afraid of Virginia Woolf?* (Tony Award), *Wishful Drinking* starring Carrie Fisher, *Looped* starring Valerie Harper, and John Grisham's *A Time to Kill* in addition to the world premieres of Marcus Gardley's *Every Tongue Confess* starring Phylicia Rashad and *Red Hot Patriot* starring Kathleen Turner. He has been named to Milwaukee Business Journal's Top 40 under 40 and a "Friend of the Hispanic Community" by the United Community Center. He currently serves as the President of the Milwaukee Arts Partners, Vice President of the Board of Pathways High School, Chair of the Finance Committee of ImagineMKE, and Coordinator for Equity, Diversity & Inclusion for AFS Student Exchange Programs. Bauman is a graduate of Harvard Business School's Strategic Perspectives in Non-Profit Management program and has a Master of Fine Arts in producing from the CalArts. He and his husband Justin live in Whitefish Bay and have been host parents to AFS Exchange Students from Norway and Germany.



*Festive  
Foods  
For All!*

**OUTPOST**  
NATURAL FOODS

70th & State Street in Wauwatosa  
[www.outpost.coop](http://www.outpost.coop)

# GET SOCIAL

INSTAGRAM:  
JOSBLUESOMBRERO  
WAUWATOSA

FACEBOOK:  
@JOSBLUESOMBRERO  
WAUWATOSAVILLAGE



*Jose's Blue*  
**SOMBRERO**

HIP CHEAP & NO SLEEP

In the Heart Of The Village  
414.453.2300

## MAGPIE JEWELRY & METALS STUDIO LLC.



7613 HARWOOD AVE.  
WAUWATOSA WI 53213  
414-771-8021  
[MAGPIEJEWELRY.COM](http://MAGPIEJEWELRY.COM)



Mention this ad in store and receive

**\$3 OFF any cake**  
(minimum \$15 purchase)

1417 Wauwatosa Ave.  
Wauwatosa, WI 53213  
(414) 453-0330

Open 7 days a week  
11 am - 10 pm





# Happy Holidays

wauwatosavillage.org



Bring in this ad to receive

**ONE FREE  
MARGARITA**

with the purchase  
of a Dinner Entree.

Not good with any other offers. Expires 1/31/20

7118 West State Street | Wauwatosa, WI  
414-258-5600

[www.HECTORS.com](http://www.HECTORS.com)

Luxury Apartments  
in the heart of The Village

**h** **Harmonee**  
SQUARE

We'll pay for your rent  
the remainder of 2019  
on our limited 1 & 2  
bedroom apartments.

To find out more, call  
**414-651-3786**

Pet Friendly • Private Parking  
Premium Upgrades • Luxe Living

1501 Underwood Avenue, Wauwatosa  
[harmoneesquare@horizondbm.com](mailto:harmoneesquare@horizondbm.com)  
[www.harmoneesquare.com](http://www.harmoneesquare.com)



**BE MERRY!**

7208 W. STATE STREET  
[WWW.LEFFS.COM](http://WWW.LEFFS.COM)



Artisan Plates & Craft Cocktails  
Skyline Lounge Open Late  
Private Event Space Available



414.431.1444  
7754 Harwood Ave, Wauwatosa, WI  
[www.fireflytosa.com](http://www.fireflytosa.com)

MILWAUKEE REPERTORY THEATER STAFF

Mark Clements  
ARTISTIC DIRECTOR

Chad Bauman  
EXECUTIVE DIRECTOR

ADMINISTRATION

Managing Director.....Melissa Vartanian-Mikaelian  
General Manager..... Jennifer Smith  
HR Manager.....Emily Hill  
Company Manager..... Josh Segal  
Administrative Assistant..... Zachary Maynard  
Management Assistant.....Amaris Bates  
Receptionists.....Michael Evans,  
Claudine Jackson, Thaddeus Kaszuba,  
Campbell Martinez, Mary Muehleisen,  
Andrea Roades-Bruss, Amelia Strahan

ARTISTIC

Associate Artistic Director.....May Adrales  
Artistic Producer..... Laura Braza  
Director of Artistic Personnel..... Frank Honts  
Literary Manager..... Deanie Vallone  
Manager of Artistic Training..... Lina Chambers  
Artistic Administrator.....Dylan K. Sladky  
Casting Resident.....Thaddeus Kaszuba

ASSOCIATE ARTISTS

Ayad Akhtar (Playwright), Lee E. Ernst (Actor), Laura Gordon (Actor/Director), Angela Iannone (Actor), Todd Edward Ivins (Scenic and Costume Designer), Dan Kazemi (Composer/Musician), Marc Kudisch (Actor), Reese Madigan (Actor), Jeff Nellis (Lighting Designer), James Pickering (Actor), Aaron Posner (Director), Todd Rosenthal (Scenic Designer), Eric Simonson (Director/Playwright), Lindsay Smiling (Actor), Deborah Staples (Actor), Nathaniel Stampley (Actor), John Tanner (Composer/Musician)

COMMUNITY ENGAGEMENT

Director of Community Engagement .....Leah Harris  
Manager of Community Engagement.....Erick Ledesma  
Public Allies AmeriCorps Apprentice ..... Yeyliz Martinez

DEVELOPMENT

Chief Development Officer..... Chuck Rozewicz  
Director of Development.....Amy Dorman  
Major Gifts Officer.....Alli Engelsma-Mosser  
Associate Director of Development,  
Events & Stewardship .....Morgen Clarey  
Associate Director of Development,  
Institutional Giving .....Cassidy Skoriya  
Donor Database Manager.....Stephan Thomas

EDUCATION

Director of Education..... Jenny Toutant  
Education Manager .....Jeffrey Mosser  
Education Administrator ..... Auburn Matson  
Schools Program Coordinator ..... Joshua Pohja  
Education Resident.....Denzel Taylor

Teaching Artists..... Amira Adams, Danielle Adisi,  
Thomas Adisi, Maura Atwood,  
Allen Edge, Tessa Goulais,  
Kate Henderson, Van Johnson III,  
Ashley Jordan, Morgan Jo Karl,  
Josh Krause, Becca Marten,  
Ken Miller, Hope Parow,  
Abbey Pitchford, Brandi Reed,  
Tony Roman, Dontrell Williams

FINANCE

Chief Financial Officer..... Mark Wyss  
Senior Accountant ..... Derrik Dickinson  
Accounting Associate .....James Kaplan  
Accounting Associate .....Cristina Hughes

MAINTENANCE

Chief Building Engineer ..... Rob Lininger  
Engineers..... Todd Ross, Maurice Goodwin  
Part-Time Engineers .....Yuselff Dismukes,  
Ray Herrera, A.J. King



Studio Gear is honored to partner  
with the Milwaukee Repertory  
Theater and shine light on the arts.

Studio  
Gear

Making stories shine through  
video, audio and lighting

414-225-3777 • [studiogear.net](http://studiogear.net)

# MILWAUKEE REPERTORY THEATER STAFF CONT.

## MARKETING & STACKNER CABARET

Chief Marketing Officer ..... Lisa Fulton  
 Director of Marketing ..... Cara McMullin  
 Marketing Manager ..... Eliana Reed  
 Graphic Designers ..... Marty Baragiola,  
 Benton Melbourne, Eric Reda  
 Photographer ..... Michael Brosilow  
 Marketing Intern ..... Terese Radke

## Sales & Audience Services

Director of Sales ..... Jeremy Scott  
 Associate Director of Sales ..... Jaime Lacy  
 Group Sales Manager ..... Joyce Hanin  
 Group Sales Manager ..... Jess Shake  
 Audience Services Manager ..... Rachel Poston  
 Assistant Audience Services Manager ..... Joni Pierce  
 Audience Services Representatives ..... Bobby Boada,  
 Samantha Gill, Daniel Hanley,  
 Colleen Hayes, Savion Kirk,  
 Zachary Dean Lachowicz,  
 Emily Lange, Jenna Lassila,  
 Katie Maas, Johnell Major-Wesley,  
 Elisabeth Markman, Olivia Mauseth,  
 Julie Meadows, Alexis Moore,  
 Jackie Stengel, Lexi Such, Brittany Vinz

## Media

Director of Media Relations ..... Frances White  
 PR Assistant ..... Laura Ellingen  
 Video Producer ..... Kevin Viol

## House Operations

Front of House Operations Manager ..... Jamie Ziolkowski  
 Senior House Manager ..... Aaron Suggs  
 House Managers ..... Alysette Balboa,  
 Maranda Moton-Weston,  
 Zach Ursem, Max Wilson  
 Stackner House Managers ..... Bailey Kissack,  
 Jacob Whalen  
 Concierge/Gift Shop Associates ..... Becky Demler,  
 Cionna Dorsey-Satchell, Adrienne Essex,  
 Sara Hagen, Maranda Moton-Weston

## Stackner Cabaret Restaurant

Executive Chef ..... Chris Feldmann  
 Operations Manager ..... Donald Parsons  
 Inventory & Events Manager ..... Claire Rydzik  
 Assistant Manager ..... Darian Emerson  
 Bar Manager ..... James Passow  
 Cabaret Staff ..... Jacob Abrams, Aaron Ausberry,  
 Kathleen Borchardt, Shannon Corcoran,  
 Mariah Custalow, Dylan Damkoehler,  
 Roger Deschler, Kevin Diaz, Allison Frey,  
 Madison Geszvain, Tanya Hayes, Kelly Heimann,  
 Nicholas Jemison, Hannah Johnson, Troy Key,  
 Regina Laberge, Frenisha Lathan,  
 Angela Livermore, Sara Longley,  
 James Muehleisen, Mary Muehleisen,  
 Olivia Passow, Maribel Rodriguez,  
 Amber Rydzik, Kristin Rydzik,  
 Mia Schultz, Ty Scott, Mary Sibilski,  
 Daniel Soto, Crystal Thompson,  
 Boa Vang-Hawkins, Princessa Valdez,  
 Lucy Vang, Charles Wallace, Odell White

## PRODUCTION

Director of Production ..... Jared Clarkin  
 Associate Production Manager ..... Kaitlyn Anderson  
 Assistant Production Manager ..... Maram Samaha

## Costumes

Costume Director ..... Nicholas Hartman  
 Assistant Costume Director ..... Katharine Engelen  
 Costume Shop Design Assistant ..... Madeline Corson  
 Senior Draper ..... Alexander B. Tecoma  
 Tailor ..... Jef Ouwens  
 First Hand ..... Jessica H. Jaeger  
 First Hand ..... Leslie Vaglica  
 Costume Crafts Artisan ..... Haley Jaeger  
 Stitchers ..... Annie DeYoung, Katie Leonard,  
 Carol Ross, Emily Strohmer  
 Costume Construction Resident ..... Veronica Vicksas  
 Wig Master & Makeup Supervisor ..... Lara Leigh Dalbey  
 Wig Master ..... Emily Christofferson  
 Wig and Makeup Assistant ..... Logan Bayuk  
 Stylist ..... Kevin McElroy, Robert Laurence Studio  
 Wardrobe Supervisor ..... Robert T. Sharon  
 Wardrobe Resident ..... Elizabeth Gerwick  
 Wardrobe ..... Logan Bayuk, Annie DeYoung,  
 Alyssa Janco, Kathleen Rock,  
 Amelia Strahan, Veronica Vickers

## Lighting & Video

Lighting and Video Director ..... Aaron Lichamer  
 Assistant Lighting Design Resident ..... Olivia DeLuca  
 Electrician Resident ..... Sage Weber-Shirk

## Sound

Sound Director ..... J Jumbelic

## Props

Properties Director ..... Jim Guy  
 Props Crafts Artisan ..... Carly Anders, Tayler Varney  
 Soft Props Artisan ..... Jennifer M. Higgins  
 Props Carpenter/Artisan ..... Erik Lindquist  
 Prop Graphics Artist ..... Mindy Knoll

## Scenic

Co-Technical Director ..... John Houtler-McCoy  
 Co-Technical Director ..... Sean Walters  
 Asst. Technical Director ..... Danny Halminiak  
 TD Apprentice ..... Joseph Fry  
 Charge Scenic Artist ..... Jim Medved  
 Lead Scenic Artist ..... Shannon Mann  
 Scenic Artist ..... Chrissy Piontek  
 Assistant Stagehand ..... Caleb Woodring

## Stage Management

Production Stage Manager ..... Kimberly Carolus  
 Stage Managers ..... Richelle Harrington Calin,  
 David Hartig, Martie Barthel, Tara Kelly,  
 Rebecca Lindsey, Kira Neighbors, Kate Ocker,  
 Brooke Redler, Sara Sheets, Emily Wright  
 Stage Management Fellow ..... Josh Hart  
 Stage Management Residents ..... Abbi Hess,  
 Krista Kanderski

## Resident Stagehands & Carpenters

Bill Burgardt, Erin Collopy, Steve Gillingham,  
 Rick Grilli, Aaron Siegmann,  
 Robert Schultz, Andrew Sours, Jim Zinky

## MILWAUKEE REPERTORY THEATER BOARD OF TRUSTEES

---

### *President*

**Gregory C. Oberland**

### *Vice President, Development*

**Gina Peter**

### *Vice President, Trustees and President-Elect*

**Catherine Robinson**

### *Secretary*

**Bladen Burns**

### *Treasurer*

**James Phillips**

### *At Large*

**Warren Buliox**

### *At Large*

**Judy Hansen**

### *At Large*

**Robert H. Manegold**

### *At Large*

**Linda Marcus**

### **TRUSTEES**

Ayad Akhtar

Matt Bartel

Ivor Benjamin

Wendy W. Blumenthal

Melanie Booth

Michael Carter

Jane Chernof

Marybeth Cottrill

Amy Croen

Robert H. Duffy

Molly Kubly Fritz

Andres Gonzalez

William Guc

John Halechko

Bryan House

John Hunzinger, P.E.

Tom Irgens

Lynda Johnson

Bradley J. Kalschauer

David Kundert

Phoebe Lewis

Joan Lubar

Kristine Lueders

Mark Niedfeldt, M.D.

Adam Peck

James Phelps

Joe Pickart

Karen Plunkett

Caran Quadracci

Christopher Rowland

Craig Swan

Deborah Tomczyk

Nicholas Wahl

## FRIENDS OF THE REP BOARD

---

### *President*

**Steph O'Connor**

### *Immediate Past President*

**Aileen Smith**

### *VP External Affairs*

**Melita Biese**

### *VP Fundraising*

**Terry Sutter**

### *VP Internal Services*

**Susan Herro**

### *Secretary*

**Erin Burgess**

### *Treasurer*

**Jim Mergener**

### *Members*

**Terry Bell**

**Cathy Jakicic**

**Jaclyn Jecha**

**Janet Kaldhusdal**

**Drew Martin**

**Emily McKeown**

**Vic Passante**

**Suzanne Powell**

**Craig Warnecke**

**Karen Weinberg**

**Les Wilson**



## SUSTAINING TRUSTEES

These former Rep Trustees continue their engagement through performance attendance, a minimum annual contribution of \$250, and/or potential membership in the Limelight Legacy Society.

Richard Abdoo	Anne Gimbel	Abigail J. Nash
Joaquin Altoro	Kathleen Gray	Tonen (Sara) O'Connor
Patsy Aster	Edward T. Hashek	Elaine N. Peterson
Jay Baker	Jill Heavenrich	Anthony Petullo
Katharine Banzhaf	Jacqueline Herd-Barber	Gwen Plunkett
James E. Braza	Peter Hotz	Elizabeth Quadracci-Harned
Joyce G. Broan	Janet Hume	Kristine Rappé
John Crichton	Stephen Isaacson	Dr. John E. Ridley
Danny Cunningham	Judy Jorgensen	Allen N. Rieselbach
Karen Dean	J. Patrick Keyes	Joseph A. Rock
Mark J. Diliberti	John Kordsmeier	Darlene Rose
George A. Dionisopoulos	Frank Krejci	Micky Sadoff
Robert Dye	Arthur J. Laskin	Joseph Schlidt
Norman Dyer	James LaVelle	James Schloemer
Stephen Einhorn	David J. Lubar	Thomas Scrivner
James D. Ericson	Marianne Lubar	Edward Seaberg
Susan Esslinger	Susan Lueger	Brenda Skelton
Robert Feitler	Audrey A. Mann	Patrick Smith
David Fleck	Vince Martin	Robert Taylor
Timothy C. Frautschi	Patti Brash McKeithan	Renee Tyson
Ann Gallagher	Venora McKinney	Stephen VanderBloemen
Patrick Gallagher	Sandra McSweeney	W. Kent Velde
Connie Gavin	Richard Meeusen	Karin Werner
Katherine M. Gehl	Donna Meyer	Stacy Williams
Lloyd A. Gerlach	Douglas Mickelson	Andrew Ziegler
Cecilia Gilbert	Dwight L. Morgan	

## PRESIDENTS' COUNCIL

James Braza	Larry Jost	Patricia Brash McKeithan
Joyce Broan	John L. Kordsmeier	Donna Meyer
Lloyd A. Gerlach	Frank Krejci	Gregory C. Oberland
Judy Hansen	Susan A. Lueger	Edward Seaberg
Jacqueline Herd-Barber	Robert H. Manegold	W. Kent Velde
	Vincent L. Martin	

## LIMELIGHT LEGACY SOCIETY MEMBERS

The Limelight Legacy Society is a group of visionary donors who support Milwaukee Rep through a planned gift.

**New members as of May 1, 2019 are in bold.**

If you want to learn more about membership opportunities and benefits, please contact Alii Engelsma-Mosser at 414-290-5366 or [Aengelsma-mosser@milwaukeeerep.com](mailto:Aengelsma-mosser@milwaukeeerep.com).

George R. Affeldt, Jr.	<b>James and Ellen Flesch</b>	<b>Vivian Moller</b>
Sharee Allain and David Schertz	Deborah Fugenschuh and Mark Hinchey	Bob and Jan Montgomery
Gerald and Gail Baccetti	Bill and Susanne Gay	Charles and Barbara Murphy
Bob Balderson	Jeff Glock and Jane Reilly	Greg and Rhonda Oberland
John and Carol Bannen	Sara L. Grotenrath and James Pech	Karen Ellen Owens
Katharine Banzhaf	Delphine Gurzynski	Elaine N. Peterson
<b>Brian and Rebekah Barsch</b>	Richard and Susan Hackl	Gwen Plunkett
Adam and Megan Bauman	Sybil Hamilton	Ronald and Barbara Poe
Chad Bauman and Justin Dunleavy	Arlene Hansen	Milan Racic
Mark and Victoria Benskin	Judy Hansen	David and Pat Riersson
Mark Biehl	Leland Hansen	Sara Risley
Ralph Bielenberg	Edward Hashek and John Jors	Gayle Rosemann and Paul McElwee
Melita Biese	Dr. Lawrence Howards	Ed Seaberg and Patrick Smith
Joyce G. Broan	Janet Kellogg Hume	Roger and Margery Senn
<b>Mark E. Carstensen and Mary M. Horton</b>	<b>Cathy Jakicic</b>	Brenda Skelton and Jim Bendtsen
Jane and Stephen Chernof	Deb and Peter Johnson	Aileen M. Smith
Mark Clements and Kelley Faulkner	Bradley J. Kalscheur	Terry R. Sutter
Chris and Judi Collins	Richard and Diane Kane	Harry and Kine Torinus
Diane Dalton	Margaret Knitter	Harry and Mary Beth Van Groll
Randall Daut and Patricia Ryan	Christine Krause	Judy Van Till
Susan and Bill Dawicke	David and Camille Kundert	Paul Vandeveld
Robert and Karen Dean	Sandra L. Laedtke	Kent and Marcia Velde
Carol Z. Dolphin	James and Mary LaVelle	Greg and Jodi Wait
Rosemarie Eierman	Mr. and Mrs. Llewellyn E. Licht	David and Cheryl Walker
Roma Eiseman	Robert and Susan Lueger	Barbara Wesener
Don Ellingsen	Carol and Rob Manegold	Stacy and Blair Williams
Susan and Gee Esslinger	Jim and Sally Mergener	Paul and Sandy Wysocki
David and Janet Fleck	Anthony and Donna Meyer	

# A Tribute to *A Christmas Carol's* First Music Director

Edmund Assaly was the first musical director for Milwaukee Rep's production of *A Christmas Carol*, and he continued in this role until his death in 1983.

Born in Rosetown, Canada in 1920, he began playing the piano at eight and, when his family moved to Saskatoon in the early 1930s, he studied piano and composition. He was the organist at Saint James Church and played on CBC radio in Canada. During World War II he took part in entertainment tours for the troops and began his career in composition.

Edmund received the licentiate degree of music from the Royal College of London and went on to compose and conduct for radio and television for CBC, eventually settling down in Montreal. While there, he enjoyed a successful career as a composer, creating works like *Carrefour*, the award-winning work of the Montreal Ballet Festival (1950), and other works for ballets throughout the 1950s and 60s. He undertook the musical direction of the national tour of *You're A Good Man, Charlie Brown!* for more than a year and even performed at the White House.



He moved to Milwaukee in 1970 with his wife, Gretta, to teach orchestration, arranging, and harmony at UW-Milwaukee. While in Milwaukee, he worked with many arts groups in Milwaukee including the Milwaukee Symphony, the Milwaukee Ballet, and the Milwaukee Opera. One of his crowning achievements was the creation of the musical *All Together Now* in 1973 with former Milwaukee Rep Artistic Director Nagle Jackson and former Resident Acting Company member Jeffrey Tambor.

**Milwaukee Rep owes Edmund and Gretta Assaly a huge debt of gratitude for their contributions in making *A Christmas Carol* one of Milwaukee's most beloved holiday traditions!**



To make a gift to The Rep, call **414-290-5376**, or visit **[www.MilwaukeeRep.com](http://www.MilwaukeeRep.com)**

## 2019/20 DONORS

The following list represents organizations and individuals who have made a cumulative contribution of \$250 or more to the Annual Fund, Curtain Call Ball Paddle Appeal donations and Corporate Sponsorships, Created in Milwaukee Campaign, and Stackner Campaign between **August 28, 2018 – October 28, 2019**. For a complete list of all our supporters, please visit [www.milwaukeekeerep.com](http://www.milwaukeekeerep.com).

### Corporation, Foundation and Government Giving

#### \$1 million +

United Performing Arts Fund (UPAF)

#### \$100,000 – \$999,999

The Lynde and Harry Bradley Foundation  
Herzfeld Foundation  
Shubert Foundation

#### \$50,000 – \$99,999

CAMPAC  
Four-Four Foundation  
Milwaukee Public Schools  
Northwestern Mutual  
Rockwell Automation  
Wells Fargo

#### \$25,000 – \$49,999

Bader Philanthropies  
Patty and Jay Baker Foundation  
BMO  
The Friends of The Rep  
Greater Milwaukee Foundation  
Husch Blackwell LLP  
Johnson Controls  
Kohl's Corporation  
National Endowment for the Arts  
We Energies Foundation

#### \$10,000 – \$24,999

Associated Bank  
Chase Family Foundation  
Demmer Charitable Trust  
Fiduciary Management  
Godfrey & Kahn S. C.  
Frieda & William Hunt Memorial Trust  
KPMG  
The Charles E. Kubly Foundation  
The Marcus Corporation  
Jane Bradley Pettit Foundation  
PNC  
Potawatomi Hotel & Casino  
Reinhart Boerner Van Deuren S.C.  
Rogers Behavioral Health  
Studio Gear  
Wisconsin Arts Board

#### \$1,000 – \$9,999

ANON Charitable Trust  
Baird  
Burke Properties  
CG Schmidt, Inc.  
Cream City Foundation  
Deloitte  
Eppstein Uhen Architects  
Ernst & Young, LLP  
Ralph Evinrude Foundation  
Foley & Lardner

Froedtert Health

The Gardner Foundation  
William N. and Janice V. Godfrey Family Foundation  
GRAEF  
Greater Milwaukee Association of Realtors Youth Foundation  
Harley-Davidson Foundation  
Evan and Marion Helfaer Foundation  
Dorothy Inbusch Foundation  
Camille A. Lonstorf Trust  
ManpowerGroup  
Marquette Associates, Inc.  
Michael Best  
Milwaukee Arts Board  
Charles D. Ortgiesen Foundation  
Phoenix Investors  
PricewaterhouseCoopers  
Quarles & Brady LLP  
Reinhart Boerner Van Deuren S.C.  
Spano Pratt Executive Search  
Spear Arts Education Fund  
Townsend Foundation  
The VanderBloemen Group LLC  
West Bend Mutual Insurance Company

#### \$500-\$999

RSM US LLP

#### \$250 – \$499

Actors' Equity Foundation, Inc.  
The Brookby Foundation  
Urich Lock Co

#### Participants in the Matching Gift Program

AmazonSmile  
American Family Insurance Dreams Foundation  
American Transmission Company LLC  
Baird  
Eaton Corporation  
Edward Jones  
ExxonMobil Foundation  
GE Foundation  
Greater Milwaukee Foundation  
Bucyrus Foundation, Inc.  
IBM Corporation  
Illinois Tool Works Inc.  
Johnson Controls Foundation  
JPMorgan Chase Foundation  
KPMG  
Pfizer Foundation Matching Gifts Program  
Reader's Digest Foundation  
Rockwell International Corp. Trust Matching Gift Program  
Target  
Verizon Foundation  
We Energies Foundation  
Wells Fargo

Milwaukee Rep welcomes gifts of securities and stocks. If you plan to make such a gift, please notify the Development Department at 414-290-0717 so we can properly credit and acknowledge your generosity.



**UNITEDPERFORMINGARTSFUND**

**INVEST IN INSPIRATION**

When you donate to the United Performing Arts Fund, you support more than a show. Your gift is an investment in our local community, helping to enrich our culture, the economy and arts education for the children in our area. Let that be your cue to act.

**DONATE TODAY AT [UPAF.ORG/DONATE](http://UPAF.ORG/DONATE).**

**Milwaukee Ballet, *The Nutcracker*, 2017, Marize Fumero, Photo by Mark Frohna;  
First Stage, *The Wiz*, DiMonte Henning, Darrington Clark and Reese Parish, Photo by Paul Ruffolo;  
Milwaukee Youth Symphony Orchestra, Photo by Ron Oshima**



## Individual Giving

### Luminary (\$100,000+)

Anonymous  
Billie Kubly  
Joel and Caran Quadracci

### Visionary (\$50,000-\$99,999)

Bladen and Julia Burns  
Four-Four Foundation  
David and Camille Kundert  
Lubar Family Foundation  
Marianne and Sheldon Lubar  
Madeleine and David Lubar  
Susan Lubar Solvang  
Joan Lubar and John Crouch  
Plunkett Family Foundation  
Craig and Mara Swan  
Julia and David Uihlein

### Artistic Producer (\$25,000-\$49,999)

Anonymous (2)  
Melanie and Steve Booth  
Greg and Rhonda Oberland  
Gina and Eric Peter  
Tom and Susan Quadracci  
Christine Symchych and Jim McNulty  
Ed Seaberg and Patrick Smith

### Producer (\$10,000-\$24,999)

Anonymous (4)  
Gretta Assaly  
Michael Barber and Jacqueline Herd-Barber  
Kellen and Matt Bartel  
Richard and Jo Ann Beightol  
Mark and Karen Bitzan  
Bill and Priscilla Boelter  
Robert C. Burrell  
Croen Foundation, Inc.  
Curt and Sue Culver  
Margaret Dethloff and Terri Zeh  
Tom and Molly Duffey  
Suzy B. Ettinger Foundation  
Molly and David Fritz  
The Lloyd Gerlach Family  
Peter and Beth Gottsacker  
Greater Milwaukee Foundation  
Norman and Lucy Cohn Family Fund  
Judith A. Keyes Family Fund  
Donna and Tony Meyer Fund  
John J. Halechko and Marc Colletti  
Judy Hansen  
John and Susan Harrits  
Carla H. Hay  
Christy and Aaron Jagdfeld  
Judy and Gary Jorgensen  
Ted and Mary Kellner  
Keyes Family  
Connie and John Kordsmeier  
Phoebe Lewis  
Linda and Greg Marcus  
John and Linda Mellows  
Adam and Laura Peck  
Jim Phillips  
Joe and Katie Pickart  
Bill and Linda Priebe  
Paul and Patricia Purcell  
Milan Racic  
Catherine and Buddy Robinson  
Gayle Rosemann and Paul McElwee  
Kathleen H. Seidel  
Stacy and Blair Williams  
Carlene and Andrew Ziegler

### Director (\$5,000-\$9,999)

Anonymous (2)  
Adlon Partnership  
Isabel Bader  
Bob Balderson  
Ivor and Carol Benjamin  
Wendy and Warren Blumenthal  
James E. and Mary K. Braza  
Randal and Mary Lynn Brotherhood  
Elaine Burke  
Chris and Judi Collins

Thomas J. and Deborah W. Degnan  
Dr. Eric A. Durant  
Four-Four Foundation  
Don Fraker and Maja Jurisic  
Andres Gonzalez  
Greater Milwaukee Foundation  
Anthony and Andrea Bryant Family Fund  
Susan and Howard Hopwood Fund  
Bryan and Rebecca House  
John and Marci Hunzinger  
Jewish Community Foundation  
Stephen and Jane Chernoff Donor Advised Fund  
Lynda Johnson  
Mike and Marie Johnson  
Ruth DeYoung Kohler  
Kristine and Wayne Lueders  
Robert and Susan Lueger  
Dawne and Ray Manista  
Vince and Jan Martin  
Patti McKeithan  
Dwight and Marleen Morgan  
Abigail and David Nash  
Drs. Mark and Jennifer Niedfeldt  
Dr. David Paris  
Chris Rowland  
Meredith and Thomas Scrivner  
Sue and Bud Selig  
Clark and Diane Slipper  
Dr. Mark and Nancy Smuckler  
Curtis and Deborah Tomczyk  
Harry and Mary Beth Van Groll  
Nic and Sally Wahl  
David and Cheryl Walker  
Teddy and Karin Werner

### Designer (\$2,500-\$4,999)

Anonymous (2)  
Fran and Lowell Adams  
Robert and Peggy Arfman  
Richard and Sara Aster  
Gary and Connie Bakker  
Katharine Banzhaf  
Richard and Diana Barthel  
Chad Bauman and Justin Dunleavy  
Donna and Donald Baumgartner  
Warren Buliox  
Timothy and Kathleen Carr  
Mark Clements and Kelley Faulkner  
Guy and Kathy Crane  
Sue D'Alessio  
Jeff Drope and Victoria Teerlink  
Bob and Teri Duffy  
Susan and Gee Esslinger  
Kirt and Dixie Fiegel  
James and Ellen Flesch  
Karen and Gardner Friedlander  
Rob Gardenier and Lori Morse  
Franklyn and M. Anne Gimbel  
Greater Milwaukee Foundation  
Margaret Heminway Wells Fund  
JB Fund  
Clark and Lauri Green  
Richard Grunke and William Grasc  
Leland Hansen  
Katie Heil  
Peter and Linda Hotz  
Henry and Margery Howard  
Kenton and Janet Howenstine  
Stephen and Roberta Isaacson  
Jewish Community Foundation  
Dr. Burton E. Goodman and Harriet Bocksbaum  
Micaela Levine and Tom St. John Donor Advised Fund  
Richard and Tracey Klein Family Charitable Trust  
Mark and Jenny Kopetsky  
Marina and Frank Krejci  
David and Jean Lauer  
Kevin and Roseann Lyons Charitable Fund  
Jeannie Mantz  
Terri and Dave May

Daniel J. and Constance P. McCarty  
Merle and Sandra McDonald  
Robert and Susan Mikulay  
Keith and Jane Nosbusch  
Kathy and Alan Olsen  
Elaine N. Peterson  
Anthony Petullo Foundation  
James and Morgan Phelps  
Fred Pike and Cecilia Taylor  
David and Roberta Remstad  
Cornelia and John Riedl  
David and Pat Riersen  
Allen and Pat Rieselbach  
Richard and Karen Rodgers  
Micky and Ron Sadoff  
Jay and Anne Schamberg  
Patrick W. Schmidt and Dewey J. Caton  
Richard and Mary Schnell  
John and Kristin Sheehan  
Jud Snyder and Amy Stillman  
Nita Soref  
Marlen Stark and Debra Altshtark-Stark  
Laura Strain  
Mike and Peg Uihlein  
Judy Van Till  
Kent and Marcia Velde  
Raymond and Kelly Wilson  
Wilfred Wollner  
Joe and Mary Ann Zompa

### Playwright (\$1,500-\$2,499)

Anonymous  
Helen Ambuel  
Amy Argall  
Bob Barthel  
Mark Biehl  
William and Barbara Boles  
Larry Bonney  
Cheri and Tom Briscoe  
Bruce and Marsha Camitta  
Thomas and Gisela Chelimsky  
Jim and Marybeth Cottrill  
Antony and Nikki D'Cruz  
Amy and Mark Diliberti  
Sandy and George Dionisopoulos  
Carol Z. Dolphin  
Tom Dorney and Sylvia Pratt  
Jim Ericson  
Jeff and Kelly Fitzsimmons  
Peter Foote and Robin Wilson  
Rick and Liz Gebhardt  
Mr. Stephen and Dr. Valerie Gigot  
Greater Milwaukee Foundation  
Donald and Barbara Abert Fund  
Bernadine and Stephen Graff Fund  
Schoonenberg Family Foundation Fund  
Delphine Gurzynski  
Edward Hashek and John Jors  
Laurie Hazzard  
Dave and Judy Hecker  
Ralph and Bonnie Hensel  
Patricia Herro  
Steven and Karen Huser  
Tom Irgens and Christine Culver  
Jason and Hannah Jahn  
Jewish Community Foundation  
Pam Kriger Donor Advised Fund  
Maureen Kania Swokowski  
Kristine Kile  
Paul and Amy Kolo  
Robert and Gail Korb  
Christine Krause  
Perry Lieuallen and Darcy McManus  
Steven Liszewski  
Richard and Roberta London  
Dr. Brent and Susan Martin  
Tom and Renee McCutcheon  
Jim and Sally Mergener  
Vivian Moller  
Bob and Jan Montgomery  
The Mosher Family Foundation  
David Mullins and Steph O'Connor  
Chris and Ninveh Neuman

## 2019/20 DONORS

Scott Patulski and Kristine Krause  
 Alan and Carol Pohl  
 Earl Potter and Lani Williams  
 Jonas and Sylvia Prising  
 Mrs. Susan B. Purtell  
 Jim and Lys Reiskyt  
 Susan Riedel  
 Paul and Lynn Rix  
 John and Debbie Roesner  
 Wayne and Christine Sage  
 Richard and Jean Schmalfeld  
 A.J. Star  
 Anne and Fred Stratton  
 James and Elaine Sweet  
 Elizabeth Vaeth  
 Christine M. and Stephen C. VanderBloemen  
 Diane Kippenhan-Vollmer and James Vollmer  
 Greg and Jodi Wait  
 Dr. and Mrs. Paul Weisman  
 Eric and Sarah Whyte  
 Robert L. Woodbury

### Stage Manager (\$1,000-\$1,499)

Anonymous (7)  
 Matteo Alioto  
 Joaquin Altoro and Claudia Villarreal  
 David and Carol Anderson  
 Astor Street Foundation  
 Brian and Rebekah Barsch  
 Jackie Behnke  
 John Bjork, MD and Colleen Cornelius  
 Cristin and Jonathan Bock  
 Frank and Caryl Briscoe  
 B. Lauren and Margaret Charous  
 Steve and Nancy Check  
 Bunny and Ron Cohen  
 Beverly Colton  
 Russell and Sandra Dagon  
 The Duback Family Charitable Fund  
 Michael and Janet Durham  
 Gary Fait  
 Feitler Family Fund  
 Thomas Fladeland  
 Thomas and Marcia Flanagan  
 Chris and Rory Foley  
 Jane M. Foster  
 Patrick D. Gallagher  
 Richard S. and Ann L. Gallagher  
 Jack Gebhardt and Deborah McKeithan-Gebhardt  
 Jon and Nancy Gilmore  
 Jason and Diep Graham  
 Greater Milwaukee Foundation  
 Bechthold Family Fund  
 Joan and Peter W. Bruce Fund  
 Journal Foundation  
 Carmen Haberman  
 Glen and Claire Hackmann  
 John Healy and Mary L. Tobin  
 Jill Heavenrich  
 David and Darcy Hinz  
 Ron Hofer and Kathleen Gray  
 Mary Beth Holloway  
 Pam Hoover  
 Jewish Community Foundation  
 Sherwood E. and Libby S. Temkin Donor  
 Advised Fund  
 Deb and Peter Johnson  
 Judith Katz  
 Dr. Jack and Myrna Kaufman  
 John and Bronwen Knappenberger  
 Don and Barb Koehler  
 Lilane Koehn Mace  
 Anthony and Susan Krausen  
 Eric Larson and Susan Lewis  
 Nancy and Arthur Laskin  
 Graham Lewis  
 Dr. Paul Loewenstein and Jody Kaufman  
 Loewenstein  
 Paul and Patty Lucca  
 Maureen and Michael McCabe  
 Doug and Vicky McManus  
 Barbara McMath  
 Anne and Tom Metcalfe  
 Pamela Meyer

Gregory and Susan Milleville  
 Lynn Minella  
 Don and Renee Mondano  
 Chris and Anne Noyes  
 John O'Hare  
 David Olson and Claire Fritsche  
 Joseph R. Pabst Charitable Fund  
 Larry and Teri Pavelec  
 Don Petersen and Corinthia Van Orsdel  
 Bruce and Candy Pindyck  
 Carol Porth  
 Ronald and Anne Putzer  
 Dr. Thomas Raimann and Mick Dwyer  
 Jim and Kris Rappé  
 Brian and Amber Regan  
 Daniel and Anna Robbins  
 Joseph A. and Sarah Rock  
 Rhoda Runzheimer  
 Pat Schlick  
 Jim and Andrea Schloemer  
 Dr. and Mrs. Thomas Schneider  
 Thomas and Lori Schuster  
 Paul and Christy Schwan  
 Linda L. Sell, MD  
 Joseph and Amy Silvers  
 Patrick and Janet Sinks  
 Dianne Spector  
 Emily and Joseph Steiner  
 Kathy Thornton-Bias  
 Renee and Joseph Tyson  
 Richard and Lynn Wesolek  
 Jay and Laura Wigdale  
 Gertrude Zauner

### Principal Actor (\$500-\$999)

Anonymous (7)  
 Richard and Joan Abdo  
 Mike and Tia Abuls  
 Jim and Terri Alioto  
 Sharee Allain and David Schertz  
 Tom and Kathy Alpren  
 Dorothy Anderson  
 Keith and Paula Anderson  
 James and Kathleen Awe  
 Richard and Amy Balge  
 George Banda  
 Nina Beck  
 Michael and Rita Becker  
 Scott Beightol and Desiree Erickson Beightol  
 Terry Bell  
 James and Andrea Bennett  
 Suzan Ben-Poorat  
 Bill and Betsie Berrien  
 Geoffrey and Karen Bilda  
 Greg Bird  
 Bob Blitzke and Jane Grogan  
 James Boerner  
 Robert and Sharon Brenner  
 Bradley Brin and Glenna Cose  
 Carla Brockman  
 James Brown and Ann Brophy  
 Bruce and Joan Butterfield  
 Daniel and Allison Byrne  
 Phil and Anne Callen  
 Trish Calvy  
 Bruce and Kathi Campbell  
 Carolyn Campion  
 José Carlino  
 James Cauley and Brenda Andrews  
 Kathleen Cepelka  
 Susan Cerletty  
 Mark and Terri Chelowski  
 Walt and Aleta Chossek  
 Joseph and Julie Chusid  
 Jay and Roxanne Ciatti  
 Adam and Jennifer Ciralsky  
 Mary and James M. Connelly  
 Rochelle Connor  
 Rev. David E. Cooper  
 Marilyn Corlew  
 David and Janice Cronin  
 Matt Cudney  
 Danny and Jolinda Cunningham  
 Mark and Julie Darnieder  
 Jeff Davis and Rachel Schneider

Susan Dawicke  
 Larry and Eileen Dean  
 Robert and Karen Dean  
 Mary Paula Dix  
 Doug Doers  
 Thomas and Mary Domer  
 John and Jean Donovan  
 Tom and Bette Drought  
 Marie Dupuis and Peter Westergard  
 Kathie and Bob Dye  
 William E. Eastham  
 Paul and Paula Eberle  
 Stewart Edwards and Joanne Danforth  
 Jan Effinger  
 Richard and Patricia Ehler  
 Dale and Mary Erickson  
 Evelyn Ericson  
 Rick and Karen Esenberg  
 Nathan and Susan Fair  
 Robert and Kristin Fewel  
 Kenneth Finkel and Jane Delzer  
 David and Janet Fleck  
 Karl and Bill Foote  
 Bruce and Kathy Ford  
 Kurt and Kay Frederick  
 Allan F. and Mary Ellen Froehlich  
 Bill and Susanne Gay  
 Rod and Linda Gehrig  
 Tony and Mary Gentine  
 Burzoe and Nancy Ghandhi  
 Cecilia Gilbert  
 Adam and Carole Glass  
 Jeff Glock and Jane Reilly  
 Henry Goetzinger  
 Larry and Geli Golopol  
 Frank and Renee Gonzales  
 Greater Milwaukee Foundation  
 Bechthold Family Fund  
 Nancy E. Hack Fund  
 Hepburn "Bootstrap" Foundation  
 Paul and Christine Grebe  
 James Green  
 Thomas and Mary Grossman  
 Honorable Michael and Barbara Guolee  
 Steve and Karen Guy  
 Charles and Elizabeth Haas  
 Paul and Gloria Halverson  
 Amy Harker-Murray  
 Dale and Sara Harmelink  
 Thomas Harty and Sharon Safford Harty  
 John Haydon and Grace McBain-Haydon  
 Hilda Heglund  
 Robert and Amy Heinrich  
 Erik Hekkers  
 Richard and Jean Herman  
 Hugh and Robin Hoffman  
 Kevin and Debra Hood  
 Roy H. Jablonka  
 Valerie Jablonka  
 A. W. Janikowsky  
 Jewish Community Foundation  
 Eileen and Howard Dubner Donor Advised  
 Fund  
 Sherry and Norm Malmon Donor Advised  
 Fund  
 Dorene and Phil Paley Donor Advised Fund  
 Dorothy and Merton Rotter Donor Advised  
 Fund  
 Dan and Pat Johansen  
 Bryon and Gwen Johnson  
 David and Mel Johnson  
 Mary Johnson  
 Eric and Stacy Jossart  
 John Jump  
 Evan and Paula Kaiser  
 Richard and Diane Kane  
 Tom Karakis and Colleen Lese  
 Debra Katz  
 Allan Kauth  
 Raymond and Susan Kehm  
 Michael and Christy Kellman  
 Brian and Mary Lou Kennedy  
 Robert and Judy Kettler  
 Sang and Jiyeon Kim  
 John and Debbie Kissinger

# GREAT NORTHERN DISTILLING



**GIVE A HOLIDAY SPIRIT FROM THE HEART OF WISCONSIN**

PLEASE ENJOY RESPONSIBLY | [greatnortherndistilling.com](http://greatnortherndistilling.com) | Plover, WI | [/GreatNorthernDistilling](https://www.facebook.com/GreatNorthernDistilling) | [@GreatDistilling](https://twitter.com/GreatDistilling)

Ask about  
**Preplanning.**

Consultations  
are free.

414.964.3111



**Goodman • Bensman**

WHITEFISH BAY | FUNERAL HOME

**Earth-friendly. Dignified. Respectful.**

**Traditional burial and cremation services are also available.**

4750 North Santa Monica Blvd., Whitefish Bay | [goodmanbensman.com](http://goodmanbensman.com)

Debra Marcus Watton, President | Terry Kleinman, Preneed Consultant



At Milwaukee Catholic Home, we believe that an engaged life is a full life. And the more aspects of your life that you engage, the healthier you age.

**A Life Engaged** brings exceptional programming that engages the whole person, encouraging you to be your best self at every age.

**Visit [alifeengaged.org](http://alifeengaged.org) to learn more and register for unique events open to the public!**



**A LIFE ENGAGED**  
on to your next adventure

**A Milwaukee Catholic Home Program**

2462 N. Prospect Avenue, Milwaukee, WI 53211 • [alifeengaged.org](http://alifeengaged.org)



## 2019/20 DONORS

Klassen Remodeling  
Glenn Kleiman and Gisela Turner  
Margaret Knight  
Robert and Naomi Knoll  
Vincent and Cathy Kotnik  
John and Susan Krezoski  
Henry Krokosky and Char Schall-Krokosky  
Bruce Kruger and Margaret Herrick  
Sandy Laedtker  
Dan and Kathy Larsen  
Steen and Janice Larsen  
William and Judith Laste  
Kaye and Prakash Laud  
David and Mary Ann Lillich  
Dawn Lindsey  
Franklin Loo and Sally Long  
Robert and Mary Loots  
Dennis and Theresa Lowder  
Jack Haensel and Stephanie Lyons  
James and Ann Maher  
John and Audrey Makowski  
Jack and Joan Malin  
Lee Marquardt  
Andy and Janet Martin  
Joseph Masterson  
Mateo Family Trust  
Debesh and Linda Mazumdar  
Bernard and Susan McCartan  
Dan and Jill McElroy  
Jere McGaffey  
Daryl and Rita Melzer  
Steve and Ann Merkow  
Jill Meyers  
Howard and Sara Miller  
Robert and Jane Mitchell  
Claudia and Joseph Moll  
Gene and Linda Moore  
William and Patricia Moren  
Bernie Mrazik and Jeanie Jerde  
Barbara and Charles Murphy  
Jerry and Lori Murphy  
Jim and Betty Jo Nelsen  
Vern and Kay Nelson  
The Nelson-Zirzow Fund  
David and Jaclyn Ness  
John and Jane Niebler  
Paul and Kathrine Noran  
Chandra and Chris Novoa  
Sarah Oberhofer  
Dr. Thomas and Elaine Pagedas  
John and Carol Pauly  
Sandra Pendell  
Matthew Perta  
Matthew and Laurie Piette  
Susan Porter  
Les and Wendy Proctor  
Edwin and Beverly Puzia  
Donald and Mary Ellen Ralfs  
Toby Recht  
Robert and Pamela Reily  
Patrick and Peggy Remfrey  
Donald Riegelman and Kathryn Rouse  
Roger Ritzow  
Curt and Patty Robinson  
Mary Roepeke  
Peter and Connie Roop  
Darlene and Willie Rose  
Mason and Julie Ross  
Gerard and Susan Ruedinger  
Tom and Judy Saeger  
James Sanger and Mary Newton  
Richard A. Sauts Jr. and Diane K. O'Connor  
Eric Schluter  
Dean and Diane Schmelzer  
Judy and Tom Schmid  
Bob and Carol Schmidt  
Richard and Nicole Schmidt  
Don and Laura Schmitt  
James and Kathi Scholler  
Ted Schulte  
Allison Scrivner  
Hallie Sebens  
Dr. Robert and Caryl Sewell  
Scott and Dulcie Shoener  
Aileen M. Smith

Margaret Sohm  
Jon and Kris Sohn  
Joan Spector  
Barbra Kohl-Spiro and Hertzl Spiro  
John and Mary Splude  
Jerrel and Judith Stanley  
Alec Stapleton  
Charles and Jennifer Stearns  
Judith A. Steinke  
Angela and Jayson Stemo  
John Stern  
Gillian Stewart  
Robert Storm and Catherine Shaw  
Gregory Strowig  
Barry and Sue Szymanski  
Loring M. Talsky  
Thomas Tang  
James and Leigh Ann Tidey  
Catherine Tikkanen  
Sara Toenes  
Gile and Linda Tojek  
Triangle Enterprises, Inc.  
Deanna Uradnicek  
Nicki Usinger  
Richard Uspel  
Sheryl Van Haren  
Dave and Katy Vetta  
Greg and Carla Von Roenn  
Benjamin and Rachel Wagner  
Dan and Heidi Walker  
Nina Walker  
Paul Wanat  
Jack and Margaret Ward  
Robert and Kathleen Warner  
Mary and Fran Wasielewski  
Ruth Way  
Mary M. Wegener  
Neal and Cathy Wegner  
Sue Wells  
Alan and Kathy Werth  
Louisa Ann Wertzler  
Alberta Whitaker  
Susan Wiegner  
Frank and Vera Wilson  
Richard and Margaret Winz  
Norm and Prati Wojtal  
Lee Wolcott  
Pete and Penny Woodcock  
Scott and Jean Wrobbel  
Mike and Nancy Yttre  
Mark and Evonne Zalewski  
Paul and Katherine Zavada  
Joan M. Zeiger  
Eve Joan Zucker

### Supporting Actor (\$250-\$499)

Anonymous (18)  
Marlene Adland  
Selmaly Allison  
Nancy Amacher  
Val and Bonne Anderson  
Bob and Kathleen Anger  
Barbara Armstrong  
Jeff Arp  
Laurie and Keith Hickman  
John and Jenny Augustine  
John and Carol Bannen  
Paul and Elizabeth Barghen  
Barbara Baron  
Jim and Nora Barry  
Martha Barry  
Mike and Ellen Bartel  
Carla and Burt Bartlett  
Jane Batten  
Doris Bauer  
Charles and Nancy Bauer-King  
Thomas Bauldry and Thomas Czisny  
Maureen Baumann  
Kevin Baumgart  
Melissa and James Baxter  
Paul and Lianne Becht  
Donald Becker  
Natalie Beckwith  
Monica Beitzel  
Mary and Dan Benedum

Gerald and Sydel Bergtrom  
Arthur and Carolee Beutler  
David Beyer  
Ralph Bielenberg  
Big Art  
Marsi Black  
Barry Blackwell and Kathleen Eilers  
Carol Block  
David and Sherry Blumberg  
Edward and Amy Blumenthal  
Mike and Mary Bohren  
Raymond Booth  
Darold and Cheryl Borree  
Paul Bosanac  
Scott and Sandy Botcher  
Diane Bourquin  
Gene Braaksma and Rebecca Bardwell  
John and Sandra Braun  
Troy Brett  
Liz and Larry Brewer  
Dan Brinzac  
Andy and Lisa Bro  
Carol Brown  
Tom and Joanne Brown  
Bill and Lorraine Buehler  
Mr. and Mrs. Peter Buening  
Building Waters Inc.  
Chris Burgener and Linda Loke  
Shannon and Jennifer Burns  
Susan Burns  
Peter and Laurie Byrne  
Lewis Charles Cadkin and Susan Elizabeth  
Cadkin Living Trust  
John and Kathleen Cantieri  
Bonnie Cass  
Sally Castle  
Roger and Donna Choinsky  
John and Marilyn Christiansen  
Patricia and Secily Clason  
Robert and Kay Clausen  
Jeffrey Coleman  
Robert and Christine Conroy  
Donald and Suzanne Cornell  
Constance Crooks  
Diane Dalton  
Barbara Davis  
Tom DeChant  
Laura DeGoller  
Shane and Kerl Delsman  
Jane Dennis  
Kurt Deprey and Michael Murray  
Nancy Desjardins  
Mary DeVita  
Christina Diaz  
Lloyd Dickinson and Kristin Bergstrom  
Gabriela Dieguez and Francisco Enriquez  
Dennis Dirx  
Nina Dmitrieva  
Candance Doerr-Stevens  
Bridget Donahue  
Diana Doyle  
Henry Duffrin  
Sally Edgett  
Rosemarie Eierman  
Eugene and Jean Eisman  
Nelson Ellis  
Dr. Dennis and Cecile Engel  
Carl and Karen Engelhardt  
Christina England  
Bradley and Abigail Engstrand  
Paul and Karen Erickson  
Emily Errthum  
Bryan and Lyn Eskra  
Lisa Feldmeier  
Jeannie and Noah Fenceroy  
Christine L. Fenner  
Dr. Michael and Terry Fetherston  
Alexis Fielek  
Michael Fielek  
Mary Lou Findley  
Mary Teresa Flaherty  
Renae and Christopher Flowers  
Eric and Bridget Fonstad  
Helen Forster  
Kimberlee Foster

## 2019/20 DONORS

Natalie Frankel  
William and Joy Franson  
Tim and Sue Frautschi  
John and Jane Frederick  
Robert Freiboth  
Gerald and Patricia Freitag  
George Frick  
Stephen and Gail Froehlich  
Thomas and Deborah Gannon  
Ralph and Paula Garcia  
Katherine M. Gehl  
Tracy Geimer  
James and Sharon Gierahn  
Thomas Giese  
Lawrence and Hannah Goodman  
Michael Goodspeed and Gail Waring  
Dale and Mary Graves  
Greater Green Bay Community Foundation  
Wiers Family Fund  
Greater Milwaukee Foundation  
Mary and Charles Kamps Fund  
James Green  
John and Tameica Greene  
Jim Gremminger  
David and Dana Griffith  
Robert and Barbara Gross  
Ralph Gugerty  
Bruce Gunderson  
Dan and Sue Haislmaier  
Tom and Deirdre Halat  
Colin Halfwassen  
Arlene Hansen  
Rebecca Harms  
Cliff and Susan Hartmann  
Jim and Marge Hartwig  
Carol Hase  
Tim Hawks and Mary McCormick  
Naomi Hawthorne  
Thomas and Catherine Heinen  
Drs. Daniel and Nancy Herrell  
Joyce W. Hibner  
Earl and Eugenie Hildebrandt  
Alan and Jean Hilgeman  
Donald Hill  
Ruth and John Hoenick  
Andrew and Paula Holman  
Gary Holmes and Susan Holding  
Hal Horneffer  
Dante and Jennifer Houston  
Megann Hubbard  
George and Valerie Huhnke  
Richard and Esther Huiting  
Peter and Ashley Hundt  
Myra Huth  
Kenneth and Mary Ingles  
William and Karen Irwin  
Michael Isaacson  
Edward and Barbara Jacob  
Donald Jarchow  
Jewish Community Foundation  
Joan and Michael Friedman Donor Advised Fund  
Bill and Idy Goodman Family Donor Advised Fund  
Lois Malawsky Donor Advised Fund  
Roy and Kathleen Johnson  
John and Coral Kaczynski  
Marlene Kagen  
Chuck Kahn and Patti Keating Kahn  
Janine Kalowski  
Wendy Kamerling  
Mark and Ginny Kannenberg  
Jean Kapolnek  
Timothy and Mary Kean  
Tom and Judy Keenan  
Ellen Kellen  
Marilyn Kennedy  
Deonte Key  
Valeria Key  
Scott Kindness  
Don and Carol Klockow  
Russell and Rose Marie Knoch  
Martin Kohler  
Kurt and Jean Kozma  
Terry and Mary Krall

Lee and Bonita Kraus  
John and Diane Kretsck  
Stanley Kritzik  
Sharon Kruger  
Kevin Kruschke  
Harvey Kurtz and Yvonne Larme  
Brenda Kuske  
Barbara Kutchera  
Catherine La Fleur  
Janet LaBrie  
Tom and Sally Ladky  
Gary and Doris Langbruttig  
William and Jeanne Lange  
Dennis and Jeanne Larsen  
Jim and Teri Larson  
Jason and Kristy Lavann  
Eugene and Gwen Lavin  
Patrick Layden  
Larry and Mary LeBlanc  
Sam Leichting and Lindsey Tauber  
John and LaVonne Leonard  
Justine Leonard  
Lloyd and Sheri Levin  
Mark and Cindy Levy  
Rita Lewenauer  
Dr. James and Jacqueline Lichty  
Mary Lillydahl  
Nancy Lindenberg  
Rose Lopez  
Richard and Sherry Lundell  
David Lundin and Agnes Lun  
Scott and Joyce Lutzow  
Benjamin and Ellen Mandelman  
Brian and Susan Manthey  
Louis and Edythe Manza  
Jacqueline Margis  
Robert Marold and Diane Boldt  
Christopher and Maryann Marowski  
Jewel Martin  
Marc Mayerhoff  
Dan and Ada McAdams  
Katherine McCombe  
Victoria S. McCormick  
Alan and Nancy Meier  
Dean Meier  
Joyce Meinicke  
Robert Meldman  
Charles Mescic  
Douglas and Annette Mickelson  
Dennis and Judith Milbrath  
Jay Miller and Donna Faw  
Kenneth Miller and Margaret Blodgett  
Mark Molot and Jequitta Kain Molot  
Debra Moore  
Mary Moritz  
Emily Mueller  
Andreas Mueller-Blecking  
David Munoz  
Terry and Debbie Murphy  
Jim and Mary Fran Murray  
Jack and Lucia Murtaugh  
Sue Nelsen  
Karen Nelson  
Joel and Donna Nettesheim  
Jerry Niemiec  
Paul and Carolyn Noelke  
Bob and Julie Norman  
Joe Nutt  
Tonen O'Connor  
Herbert and Karen Oechler  
Marcia M. Olen  
Ed Olson and Linda Caldart-Olson  
Jim and Claire Olson  
Steve and Heide Olson  
Karen E. Owens  
Eric Oquist and Heather Deaton  
Jason and Amy Parry  
Mark and Laurie Pasch  
Barry and Trish Paul  
Frank and Joanne Paulus  
Mary Pavleje  
Debby Penzkover  
Mark and Julie Petri  
Marylene Pfeiffer  
Andrew and Sara Pforr

Kristine Phillips  
Jerry and Jill Polacheck  
James Polzin  
Frank and Melanie Popa  
Richard Poulson and Janet Bean  
Dr. Barbara Prindiville  
Donald and Judith Rafenstein  
Stephen and Susan Ragatz  
Phil and Lynell Raiche  
Patrick and Noreen Regan  
Suzann Reichley  
Dr. John and Theresa Ridley  
William and Carol Roche  
Brigid Rooney  
Barry Rosenblatt  
Daniel and Carolyn Roskom  
George and Dotty Roth  
Bob Rothacker and Connie Gavin  
Donald and Edith Rouse  
Chuck Rozewicz and Maureen Fitzgerald  
Peter and Mary Runde  
Catherine Rynkiewicz  
Mark Sabin and Mary Moberg Sabin  
Guadalupe Salinas  
Nita Salzman  
Barry and Kathy Sammons  
Steven Sass  
Matt and Betsy Sauer  
Mark Sauter  
Mike and Jan Schade  
The Wilbert and Genevieve Schauer Foundation  
Roger and Cindy Schaus  
Kay Schmidt  
Elliott Schnackenberg  
Nancy Schneiders  
George Schroeder and Mary Arenberg  
Barry Schulman and Cheryl Wolf-Schulman  
Lyman and Carol Schulz  
Beverly Schwabe  
Neal and Jeanne Seidler  
Barbara Shreves  
Jason and Kristin Shuler  
Mark and Bonnie Siegel  
Sandi Siegel  
Kim Sienko  
Kirsten Simanonok  
Robert and Cindy Simon  
David Simpson and Debbie Schmidt  
Leslie and Marcia Singer  
Gail Sklodowska  
Mary Ann and Craig Skold  
Jean Smith  
Katherine Smith  
Mark and Minna Smith  
Muriel Smith-Gross  
Dr. Marilyn Smits  
Joyce and Albert Solocheck  
James and Kathleen Springer  
Lorand and Cindy Spyers-Duran  
Carol Sroka  
Steven Stall and Jenny Paris-Stall  
Randel Steele and Margaret Gonzales  
Michael and Linda Stolz  
Bill and Judith Stone  
George and Eileen Stone  
Richard and Susan Strait  
Dave and Kathy Sturgill  
Marjorie Sutton  
Geoffrey Swain  
The Syburg Family  
Thomas and Katharine Tanty  
Paul and Donna Tanzer  
Robert Taylor  
Phyllis Teets  
John Teevan  
William Thiemann  
Dean and Kathy Thome  
Lynn Tolcott  
Mark and Christina Toth  
Thomas and Patricia Towers  
Charles Trainer and Anne Booth  
Anne Tremel  
Andrea Turke  
Natalie Verette



Fundraisers ■ Group Events ■ Open Jump ■ Fitness Classes ■ GLOW

(262) 696-1600 || W229 N 1420 Westwood Dr • Waukesha  
[www.skyzone.com/milwaukee](http://www.skyzone.com/milwaukee)

## STOP LOSING CUSTOMERS (GET BETTER ONES)

I can help you improve your brand awareness, lead generation and customer engagement with better tools & a healthier digital marketing strategy.



**JAMES PELLIZZI**  
 STRATEGIC DIGITAL MARKETING  
 & TECHNICAL CONSULTATION

[www.strategicdigitalmktg.com](http://www.strategicdigitalmktg.com)

James.Pellizzi@strategicdigitalmktg.com | 262-309-1223



**GET YOUR FREE AUDIT  
OR STRATEGY SESSION**

My team and I align the right people, processes & technologies you need to be successful.

2019/20 DONORS

Dena Vette Brendan Vierk Donna and Norman Vincent Bernadette Vitola Vincent and Sarah Vogelsang Richard Waak Owen and Karen Walsh Frank and Milena Walter Jeff Waring Sargit Warriner Nancy Blanchard Watts Lance Weinhardt Marie Weiss	Mark and Anne Weitenbeck Robert Welch Ben and Julia Westphal Donald and Melody Weyer Caroline Wieman Jim and Libby Wigdale Jullian Williams Penny Williams Tom and Marlys Williams Jinny and Les Wilson Warren Windau and Mary Loeffel William and Anne Wingate Gene and Carmen Witt	Dianna Woelfle Zac Wolff and Sara Sackmaster Jean Woller Diana Wood Dan and Chris Woods Ross and Sandy Workman Lori Wucherer Richard and Nora Yanchar James Zaiser Ralph Zick Sharon Ziegler Thomas Zigan and Scott Jones
---	--	--

IN KIND GIFTS

Robert and Denise Bartlett Betty Cronan James and Chris Duca InSinkErator Division of Emerson Electric Co. Kohler Co. Tony Krausen Bill and Gayle Roddick Carol Ross J. Richard and Karen Sendik	Bonnie and Bill Stafford Stacie Stark Louise Stein Richard Sternkopf and Kathleen Barry John and Megan Susko Nancy Weiss-McQuide Judy Wick Barbara Wrolstad
--	--

MEMORIAL GIFTS

<b>In Memory of Thomas Altenburg</b> Lou and Jan Frank <b>In Memory of Jean Apple</b> Deb and Peter Johnson <b>In Memory of Gloria Bergman</b> Richard Bergman <b>In Memory of Gerry Biehl</b> Diane Dalton Janet and Bill Hume Maureen Kania Swokowski Ritz Holman LLP Catherine Rynkiewicz <b>In Memory of Michael Bolger</b> Richard and Sara Aster Bechthold Family Fund Book Club John and Caryl Brubaker Roger and Regina Dirksen Ken and Barbara Donner Connie and John Kordsmeier Sheldon and Marianne Lubar Michael and Patricia McCauley Jere McGaffey Andrew Mendelson Tony and Donna Meyer Bob and Janet Montgomery Patrick and Noreen Regan Brigid Rooney Dick and Fran Rubinstein <b>In Memory of Lara Leigh Dalbey</b> Scott Daiss Susan and Gee Esslinger <b>In Memory of Edie DeBrue</b> Alison Riedi <b>In Memory of James Allen Dix</b> Mary Paula Dix <b>In Memory of Anne Dow</b> Book Club Norm and Judy Lasca <b>In Memory of Edward M. Dowling</b> Diane Dalton <b>In Memory of Patricia Ericson</b> JoAnn Keulks <b>In Memory of Byron T. and Suzanne S. Foster</b> Foster Family Foundation Elizabeth Vaeth	<b>In Memory of Carolee Goetzinger</b> Mike and Karen Bell Judy Berka Daniel and Joan Boyce George and Della Carrie Don Chapman Craig and Lori Chicks Robert and Charlotte Christensen Eloise Cliff David and Tracy De Angelis Zoe Erickson EXCEL Group Henry Goetzinger Roy and Shirleen Harkins Kerry Johannsen Martha Kehoe John Klopp Robert and Katherine Kobza Nancy and Betty Kwiecinski Alice and Duane Misiewicz Gerald and Marjorie Pagel Robert and Roseline Paprocki Gail Pintarro William and Bettyann Redetzke Bud Reinhold and Eileen Kehoe Jack and Mary Ellen Schickowski Linda Schlierenbeck Gail Schmidt Bernhard and Nancy Schreib Theo and Shirley Sheedy Walter and Nancy Sievert David Smith Ingrid and Roy Smith Andrew Stavish Tony Stavish Joseph and Patricia Steigerwald Don Steinke Maria Valentin Anthony and Jean Vodnik Pat and Susie Walczak Frank and June Weber Victoria Ann Wenke <b>In Memory of Bob Holmes</b> Jan Effinger <b>In Memory of Richard Ippolito</b> Bill Dosemagen and Robin Ahrens <b>In Memory of Janice</b> Milo and Betty Collins	<b>In Memory of Dewonda K. Johnyakin</b> Diane Dalton <b>In Memory of Carl Lutterbie</b> Johanna Lutterbie <b>In Memory of Irena Macek</b> Steve Macek <b>In Memory of Patty McCallum</b> Thomas and Mary Domer Thomas and Marcia Flanagan Bruce and Jeanne Kress Scott and Julie Miller Mary Simkin Joan Turner <b>In Memory of Jack McKeithan</b> Connie and John Kordsmeier <b>In Memory of Jo McReynolds Blochowiak</b> Kenneth Blochowiak <b>In Memory of Isadore Perlmutter</b> Jane and Stephen Chernof <b>In Memory of Tracy Priestly</b> Marilyn Corlew <b>In Memory of Eleanor Repinski</b> Gillian Lester-George and Manuel Montesinos <b>In Memory of Susan Robertson</b> Louis and Edythe Manza <b>In Memory of Peggy Rose</b> Katharine Banzhaf Diane Dalton <b>In Memory of Vasumati Sabnis</b> Suman Sabnis <b>In Memory of Kathleen Schaefer</b> Rich Ciardo and Beth Dean Thomas Herdeman and Peggy Chapman Allan and Mary Grau Rosenwald Jo Ann Stade <b>In Memory of Kristine Schmidt</b> Kathryn Bloomberg <b>In Memory of Diane C. Treptow</b> Ron Treptow <b>In Memory of Jean Walker</b> Janet Dunst <b>In Memory of Edwin S. Watts, M.D.</b> Nancy Blanchard Watts <b>In Memory of Sandra Weber</b> AJ Star
--	---	---



## HONORING GIFTS

### In Honor of Dr. Mary Arenberg and Dr. George Schroeder

Julie Bohnhoff-Overby

### In Honor of Patsy Aster

Joan Hardy

### In Honor and Appreciation of Patty and Jay Baker

James and Elaine Sweet

### In Honor of Jay Baker's Birthday

Jack and Ruth Beck

### In Honor of Katharine Banzhaf

Alfred Buettner

Steven Stone and Julie Banzhaf-Stone

### In Honor of Matt and Kellen Bartel

Tommie and Monica Jones

### In Honor of Leigh Birmingham

Andy and Amy Ardis

### In Honor of Mark Clements and Chad Bauman

Micky and Ron Sadoff

### In Honor of Bob and Karen Dean

Thomas and Suzanne McKale

### In Honor of Alex and Haley Gerding

Anonymous

### In Honor of Jason Graham

RSM US LLP

### In Honor of F. William Haberman

Rose Sadlon

### In Honor of Brent and Kate Halfwassen's Wedding Anniversary

Colin and Karen Halfwassen

### In Honor of Joe Hanreddy

Charles and Estella Lauter

### In Honor of Deb Johnson's Birthday

Anonymous

Dale and Carolee Heinen

Lee Kingston

Donna Kuhtz

Phyllis Lardinois

Susan Psaris

David and Nancy Wareham

### In Honor of Marina and Frank Krejci's 35th Anniversary

Peter Coffey and Kristine Cleary

### In Honor of David and Camille Kundert's 50th Anniversary

Jim and Marge Hartwig

Mary Sorrentino

### In Honor of Carol Lowey

Kim and Judy Casper

### In Honor of Rob and Carol Manegold

Julie and Mark Petri

### In Honor of Patti McKeithan

Jack Gebhardt and Deborah

McKeithan-Gebhardt

### In Honor of Sally and Jim Mergener's 50th Anniversary

Jinny and Les Wilson

### In Honor of Greg Oberland

Doug and Jane Hagerman

Meredith and Thomas Scrivner

### In Honor of Susan Robertson

Louis and Edythe Manza

### In Honor of Chuck Rozewicz

Morgen Clarey

Amy Dorman

Alli Engelsma-Mosser

Meghan Roesner

### In Honor of Ann F. Shepherd

Rebecca Harms

## Discover Ovation Communities...

Welcome to Ovation Communities, where faith, purpose and care come together for lives filled with joy. At Ovation, you receive all of the comfort, attention, entertainment, and independence you need to live life to the fullest.

*We welcome you for a personal tour*  
**414-276-2627 • [ovation.org](http://ovation.org)**



**ovation**  
COMMUNITIES

*Senior Living with a continuum of care.*

**Jewish Home**  
Milwaukee

**Chai Point**  
Milwaukee

**Sarah Chudnow**  
Mequon





# Holiday Word Search

HAPPY HOLIDAYS FROM YOUR FRIENDS AT FOOTLIGHTS!

Y S E U O U U N N U T C R A C K E R E A T D  
Y E L I A B E G R O E G R B U D D Y L S H I  
E C V O U D K C V F C D Q U H I E J F A E F  
I T S A W O N D E R F U L L I F E E E M C U  
T H E M E S S I A H H F I N L Y F T B T H P  
C O B L O R A C S A M T S I R H C A O S R T  
Z N I M Y N C E L N S Y L L O H B T B I I Y  
T T N A J M C L O Z G C E Y F T T E C R S N  
C X W D U T E H U U E E R S X J I R R H T T  
O R F E U L C P M N S S C O P K Y G A C M T  
N E I H U A O A D K E I I F O M T Q T E A S  
U R P J A R A L C U C E E D Y G P B C T S I  
S E A V S U S N V A L I O E O A E P H I S E  
N H U Z A K A C A R O L S R M N E E I H C D  
O Z C Y R I A F M U L P R A G U S U T W H C  
W I M L G S D A U V I P Y Y I A E S A E O S  
R O Y M X I H B O B W A L L A C E F P E O O  
S Z F C C Z O Y B N V E N E K Y F H M U N T  
A M S I M W N T U G J X U T Q R C G O F E F  
H E E O S T Z O T K Q I E D D T E S N P R Y

A CHRISTMAS CAROL  
BOB CRATCHIT  
BOB WALLACE  
BUDDY  
CAROLS  
CLARA  
ELF  
GEORGE BAILEY  
HOLLY

HALLELUJAH  
IT'S A WONDERFUL LIFE  
NUTCRACKER  
SCROOGE  
SNOW  
SUGAR PLUM FAIRY  
THE CHRISTMAS SCHOONER  
THE MESSIAH  
WHITE CHRISTMAS



# Season of Performance Event



The Acura Season of Performance Event is going on now. We could use this ad to tell you all about our 272-hp turbocharged RDX with available Super Handling All-Wheel Drive™, but we'd rather have you come into Acura of Brookfield to see for yourself. Hurry in today. You'll be glad you did. The Acura Season of Performance Event ends January 2, 2020.

## **Acura of Brookfield**

19180 W Bluemound Rd  
Brookfield, WI 53045

262-565-6501

[www.AcuraBrookfield.com](http://www.AcuraBrookfield.com)

abcd<sup>®</sup>  
after  
breast cancer  
diagnosis  
20th ANNIVERSARY  
1999-2019

I called  
ABCD because:

I NEEDED ADVICE ON  
HOW TO SUPPORT MY  
MOM DURING CHEMO.

**ABCD: After Breast Cancer  
Diagnosis** provides *free* emotional  
support to anyone impacted by  
breast cancer – patients, families  
and friends. We'll match you with  
someone who shares similar life  
experiences, someone to talk to,  
someone who's been through it.

We're here when  
you need us.

**414.977.1780**

[abcdbreastcancersupport.org](http://abcdbreastcancersupport.org)  
*All services are free.*

**DONATE TODAY**  
& your gift will be matched!



## YOUR FULL SERVICE MECHANICAL CONTRACTOR

Dedicated to delivering the highest quality HVAC/R  
services for industrial and commercial customers  
throughout southeastern Wisconsin

**(262) 650-0770**

[www.dillettmechanical.com](http://www.dillettmechanical.com)



**DILLETT**  
MECHANICAL

COMMERCIAL / INDUSTRIAL / HVAC/R

[centuryhouseinc.com](http://centuryhouseinc.com)

**art**  
is everywhere



**THE CENTURY HOUSE**

Modern | Scandinavian Interiors

3029 university ave, madison





Dinner  
AND A Show



Arts calendar paired with local restaurants

# Dinner AND A Show



## AMERICAN PORTRAITS

Waukesha Choral Union

The Waukesha Choral Union will paint various scenes of America, its people, their journeys and artistry through beautifully composed pieces of music.

November 1  
Oakwood Church  
(262) 238-3454



## FANTASMAGORIQUE

Wisconsin Philharmonic

This concert features favorite Halloween classics including music from Batman, Edward Scissorhands, and Phantom of the Opera.

November 2  
Sharon Lynne Wilson  
Center for the Arts  
(262) 547-1858



## FOUNDERS CONCERT

Milwaukee Youth Symphony Orchestra

Performance showcases MYSO's flagship orchestra, the Senior Symphony, and features MSO violinist Yuka Kadota as guest soloist.

November 3  
Sharon Lynne Wilson  
Center for the Arts  
(414) 267-2950



## MEET ME IN ST. LOUIS

Concordia University Theatre

Meet Me in St. Louis is a 1989 musical based on the 1944 film of the same title, about a family living in St. Louis, Missouri on the eve of the 1904 World's Fair.

November 7 – 10  
Todd Wehr Auditorium  
(262) 243-4444

106 W SEEBOTH MILWAUKEE, WI 53204  
414 763 1637 • [WWW.SCREAMINGTUNA.COM](http://WWW.SCREAMINGTUNA.COM)

Artisan Plates & Craft Cocktails • Skylight Lounge Open Late  
Private Event Space Available

7754 Harwood Ave, Wauwatosa, WI • 414.431.1444  
[www.fireflytosa.com](http://www.fireflytosa.com)

741 N Milwaukee St | Milwaukee, WI 53202  
(414) 225-0000 | [zarletti.net](http://zarletti.net)

• Weddings/Events  
• Patio!  
• 16 Tap Beers

MON - THURS 11A • FRI - SAT 11A • SUN 10:30A  
920.699.7777 • [www.hi-wayharrys.com](http://www.hi-wayharrys.com)  
710 Glover Lane • Johnson Creek, WI

# Dinner AND A Show



## A VIOLIN'S LIFE, VOL. 3

Frankly Music

Another musical deep dive into the fascinating legacy of a storied community treasure!

November 11

St. Paul's Episcopal Church  
franklymusic.org



## CRUMBS FROM THE TABLE OF JOY

Marquette Theatre

In 1950, a widowed father transplants his two young daughters out of the deep South to Brooklyn, New York in his search for salvation.

November 8-17

Helpaer Theatre  
(414) 288-7504



## NUNSENSE

Milwaukee Repertory Theater

The nuns pull out all the stops in a fundraising variety show featuring tap dancing, habit humor, and a special appearance by convent cook, Sister Julia, Child of God.

November 8 –

January 12

Stackner Cabaret  
(414) 224-9490



## TALES AND IMPRESSIONS

Festival City Symphony

The mysterious, provocative, and beautiful music of Claude Debussy and Maurice Ravel uses all the colors of the orchestra to depict stories and myths.

November 10

Pabst Theater  
(414) 286-3205



Bring in this ad to receive

**ONE FREE MARGARITA**

with the purchase of a Dinner Entree.

Not good with any other offers. Expires 3/31/20.

7118 West State Street | Wauwatosa, WI  
414-258-5600  
[www.HECKTORS.com](http://www.HECKTORS.com)



**PIER 106** 106 W Wells St | Milwaukee, WI 53203  
seafood tavern [www.pier106seafoodtavern.com](http://www.pier106seafoodtavern.com)

— Milwaukee's Local Choice for Seafood —



**JACKSON'S**

**BLUE RIBBON PUB**

IN THE  
HISTORIC BREWERY  
NEIGHBORHOOD

**GOOD PEOPLE.  
GREAT FOOD.  
COLD BEER.**

1203 N 10TH STREET, MILWAUKEE, WI 53205  
[jacksonsmke.com](http://jacksonsmke.com)





French  
Pastries,  
Breads,  
Coffee and  
Cafe Menu

4401 North Oakland Ave | 414.963.2153  
[www.northshoreboulangerie.com](http://www.northshoreboulangerie.com)



# Dinner AND A Show



## THE NERD

Milwaukee Repertory Theater

When Willum has an unexpected party guest, who turns into an unwanted houseguest, he executes an elaborate plan to rid himself of the wacky nuisance.

November 12 –

December 15

Quadracci Powerhouse  
(414) 224-9490



## STREET CORNER SYMPHONY

Cedarburg Performing Arts Center

A contemporary a cappella group based out of Nashville, Tennessee, founded in 2010 to compete in NBC's all-vocal competition, The Sing-Off.

November 15

Cedarburg Performing

Arts Center

(262) 376-6161



## DISNEY'S NEWSIES

Skylight Music Theatre

Based on the rousing true story of newsboys who strike against unfair conditions in turn-of-the century New York City, this Disney film became a Broadway hit.

November 15 –

December 22

Cabot Theatre

(414) 291-7800



## LAUGHTER ON THE 23RD FLOOR

Next Act Theatre

While Lucas and his colleagues try to top each other's gags, Max contends with the NBC brass who are threatening to pull their groundbreaking show off the air.

November 21 –

December 15

Next Act Theatre

(414) 278-0765

WEISSGERBER'S  
**GOLDEN MAST INN**  
on Okauchee Lake

*Lakeside Dining*

W349 N5293 Lacy's Lane | Okauchee, WI  
262-567-7047 | [www.goldenmastinn.com](http://www.goldenmastinn.com)

CRAFTING COMMUNITY SINCE 1997

**ROCK BOTTOM**  
RESTAURANT & BREWERY

740 N. PLANKINTON AVE.  
(414) 276-3030 | [WWW.ROCKBOTTOM.COM](http://WWW.ROCKBOTTOM.COM)

**ELSA'S MARTINI**

*Our kitchen cooks until 1 a.m.  
Our bar shakes & stirs until 2 a.m.*

ELSA'S ON JEFFERSON 833

Fresh, Healthy, Modern

**huvé**

Vietnamese Inspired Cuisine

BAY VIEW 2691 S. Kinnickinnic Ave 414-294-0483

WAUWATOSA 6519 W. North Ave 414-585-0577

[www.huerestaurants.com](http://www.huerestaurants.com)








# MODERN VINTAGE

## OUR NEW TAKE ON STEAK

Entirely new for 2019. More than a dash of class makes this the go-to place for acclaimed steaks, seafood & more. **Go on, indulge.**

# DREAM DANCE STEAKHOUSE™

-POTAWATOMI HOTEL & CASINO-

Explore the menu: [paysbig.com/dining](https://paysbig.com/dining)   

# Dinner AND A Show



## JEEVES AT SEA

Milwaukee Chamber Theatre

Bertie Wooster and Jeeves return for a new adventure on the high seas - or, at least, off the coast of Monte Carlo.

November 22 –  
December 22

Studio Theatre at  
Broadway Theatre Center  
(414) 291-7800



## A CHRISTMAS CAROL

Milwaukee Repertory Theater

The Rep's hit adaptation is a tale of love, hope and redemption with just the right blend of beautiful music, stunning sets and eye-popping special effects.

November 26 –  
December 24

Pabst Theater  
(414) 224-9490



## A CHRISTMAS CAROL

Lake Country Playhouse

Scrooge, a prosperous curmudgeon, is forced to face his selfish ways when three ghosts on Christmas Eve lead him through his Past, Present, & Future.

December 5 – 15

Lake Country  
Playhouse  
(262) 367-4697



## ELF THE MUSICAL

Waukesha Civic Theatre

Join Buddy on the holiday adventure of a lifetime, traveling to New York City to find his family, himself, and the true meaning of Christmas.

December 5 - 22

Waukesha Civic  
Theatre  
(262) 547-0708



BAYOU CLASSICS | BURGERS & SANDWICHES | SOUTHERN COMFORTS

9427 W. GREENFIELD AVENUE, WEST ALLIS  
414.778.2228 | WWW.CRAWDADDYSSCB.COM



GOOD STEAK. GREAT VEGETABLES.

222 E Erie St, Milwaukee | 414.885.2611 | Chardmke.com



RUSTIC ITALIAN CUISINE

808 E CENTER ST | 414 455 3751  
CENTROCAFERIVERWEST.COM

## FREE DRINK

with purchase of another drink.

## Y NOT II

708 E. Lyon St. • 347-9972

Please bring your theatre ticket stub or this ad to receive a free drink of equal or lesser value with the purchase of another drink.  
One free drink per person per visit.  
Expires 12/31/19.

# Dinner AND A Show



## THE GAMES AFOOT: HOLMES FOR THE HOLIDAYS

Sunset Playhouse

When one of the party guests is stabbed to death, the festivities quickly turn dangerous.

December 5 – 22  
Furlan Auditorium  
(262) 782-4430



## CHRISTMAS CAROL

Falls Patio Players

Falls Patio Players performs the beloved version of Charles Dickens' "A Christmas Carol" written by two of our very own members, Carol Klose and Jack Strawbridge.

December 6 – 8  
North Middle School  
Auditorium  
(262) 255-8372



## CHRISTMAS AT FIRST CHURCH

4 O'clocks Free Concert Series

The First Church Choir and Jubilation Ringers, the Junior and Cherub Choirs, and Rhonda Kwicien at the 41 rank Möller organ bring joy to the season.

December 8  
First Congregational  
Church of Wauwatosa  
(414) 258-7375



## FIRST NOEL

Wisconsin Philharmonic

Celebrate the holiday season featuring a multitude of local high school choirs performing some of your seasonal favorites.

December 8  
Shattuck Auditorium  
(262) 547-1858



vintage  
38  
wine bar + merchant

5690 Broad Street  
Greendale, WI



[www.vintage38greendale.com](http://www.vintage38greendale.com)

**FXTR**  
PIZZA PUB

623 S 2ND STREET | MILWAUKEE  
414-736-8709  
[WWW.FIXTUREPIZZA.COM](http://WWW.FIXTUREPIZZA.COM)

**PREVIEW**  
»THE PLAYBILL«

FOOTLIGHTS.COM

**Skylight**  
present  
**INTO THE WOODS**  
Musical by Stephen Sondheim  
Book by James Lapine  
Lyrics by Stephen Sondheim  
Directed by Michael Mayer

**MILWAUKEE**  
**SAIL LOFT**  
EST. 2011

**Minutes Away,  
Miles from Ordinary.**

414.223.0100  
649 East Erie Street Milwaukee

Chef driven cuisine, comfortable for all occasions

**HAPPY HOUR MONDAY-FRIDAY 3PM-7PM**

**HOURS: Monday 4-cls • Tuesday-Sunday, 11-cls**  
[www.milwaukeesailloft.com](http://www.milwaukeesailloft.com)



# Dinner AND A Show

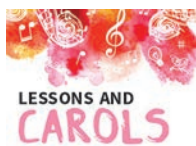


## DAILEY & VINCENT: THE JOYS OF CHRISTMAS

Cedarburg Performing Arts Center

This duo shares their blend of bluegrass, traditional country and gospel with audiences across the globe.

December 13  
Cedarburg Performing Arts Center  
(262) 376-6161



## LESSONS AND CAROLS

Waukesha Choral Union

Prepare for the holiday season with two opportunities to hear the Waukesha Choral Union sing traditional favorites to put you in the spirit of the season.

December 13 – 15  
Various Locations  
(262) 238-3454



## WIZARD OF OZ

Racine Theatre Guild

When a twister sweeps Dorothy away over the rainbow to the magical land of Oz, she begins a journey down the Yellow Brick Road to get back home.

December 13 – 22  
Racine Theatre Guild  
(262) 633-4218



## Miracle on 34th Street

Forte Theatre

Join us for this heartwarming holiday classic retold in the tradition of a live 1940's era radio broadcast.

December 13 - 22  
Martin Luther High School  
(414) 366-3634



## LET ALL MORTAL FLESH KEEP SILENCE

Chant Claire Chamber Choir

Please join Chant Claire for our winter concert which explores the themes of eucharist and incarnation through classical choral works.

December 14  
Church of the Gesu  
Chantclaire.org



## HOME FOR THE HOLIDAYS

Pius XI Performing Arts

There's no place like Home for the Holidays! Pius XI choirs, bands, orchestra, and dancers come together for a celebration of the Christmas season.

December 14 – 15  
Wendy Joy Lindsey Theatre  
(414) 290-0204



## THAT HOLIDAY FEELING

Oconomowoc Arts Center

Get into the spirit with renditions of famous holiday songs, as well as sing a-longs, audience participation, and classic tunes that are near and dear to our hearts.

December 14  
Oconomowoc Arts Center  
(262) 560-3172



## THE STORY OF THE NUTCRACKER

The Studio of Classical Dance Arts

This beautiful production fills the stage with life size dancing dolls, swirling Snowflakes, waltzing flowers and the Sugar Plum Fairy and her Cavalier.

December 14 – 15  
UW Parkside  
(262) 633-4450



Authentic • Abundant • Affordable




**Rodizio's** unique dining experience features endless sizzling grilled meats carved tableside complemented by unlimited sides and award-winning gourmet salads plus signature juices, cocktails and homemade desserts.

Group dining & private event spaces for holiday parties.

Parking validation and Weekend Valet

777 North Water St. | (414)431.3106 | [rodizio.com](http://rodizio.com)

A photograph of two women embracing outdoors. The woman on the left is wearing glasses and a plaid shirt, and the woman on the right is wearing a denim shirt and a straw hat. They are both smiling and looking at each other.

We lost the little girl we knew.  
Now we've found her again.  
We will

Rise  
above

If someone you love is struggling with mental health or addiction, you don't have to suffer alone. At Rogers Behavioral Health, together we can not only face your challenges, we can rise above them.

**ROGERS**  
Behavioral Health

[rogersbh.org](http://rogersbh.org) | 800-767-4411

A photograph of a woman with dark hair and a parrot perched on her head. The woman is looking directly at the camera with a serious expression. The background is dark and out of focus.

#CAN  
YOU  
HEAR  
MEMKE

  
**ETHEREAL  
HYPNOTIC  
EXPERIMENTAL  
KENDRA AMALIE**

MILWAUKEE MUSICIAN  
FULL INTERVIEW AT [RADIOMILWAUKEE.ORG](http://RADIOMILWAUKEE.ORG)



## Trust Clement Manor for a Continuum of Care

- Adult Day Services
- Independent and Assisted Living
- Transitional Care • Long-Term Care
- Clare Suites Memory Care Assisted Living
- Center for Enrichment

CALL US TODAY TO SCHEDULE A VISIT!

3939 S. 92nd St., Greenfield, WI  
(414) 546-7000 | [clementmanor.com](http://clementmanor.com)

Clement  
Manor

Sponsored by the School  
Sisters of St. Francis



# Cheers to 35 Years



Join us in celebrating 35 years with our  
**November Anniversary Sale & December Holiday Sale!**

EAST • TOWNE • JEWELER  
CUSTOM DESIGN SPECIALIST  
Inc.

THE SHOPS AT EAST TOWNE SQUARE  
1515 WEST MEQUON RD., MEQUON  
262.241.8007

[www.easttownejewelers.com](http://www.easttownejewelers.com)



  
**FOOTLIGHTS**  
greeting cards

GREETING CARDS  
FOR THEATRE PEOPLE

# act like you care.

ACTLikeYouCare  
on [Etsy.com](https://www.etsy.com) 

# Giving in small ways can make a **big difference.**

We all have gifts to give and they each can make a big difference. Tune in to Milwaukee's Philanthropic Community on Sundays at 10am on WISN AM1130 or listen on demand to learn how you can make an impact in our community.

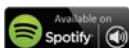


The Heart of Milwaukee Philanthropy™



*Milwaukee's Philanthropic Community is brought to you by Ellenbecker Investment Group.*

Listen on demand at **[ellenbecker.com/radio](http://ellenbecker.com/radio)** or on the following:



*Exceptional Planning. Extraordinary Service.®*

Advisory services offered through Ellenbecker Investment Group, Inc. (EIG), a Registered Investment Advisor. Registration does not imply a certain level of skill or training.