

MILWAUKEE
REP

**LITTLE WOMEN
SOCIAL
NARRATIVE**



I am going to see a play at
Milwaukee Repertory Theater!

Little Women



The play is called *Little Women*
by Kate Hamill.

This play will be in the Quadracci Powerhouse. This is one of Milwaukee Rep's three theaters. It is located inside the Associated Bank River Center at 108 E Wells St, Milwaukee, WI 53202.



If I can't find the theater, I can call (414) 224-1761 for help.



When I get to the theater, I might have to wait in the lobby for a few minutes before I go to my seat and before the play starts. I will see other people there.

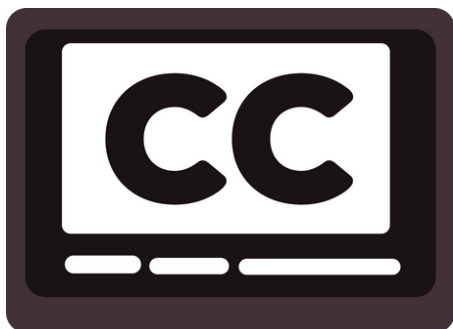
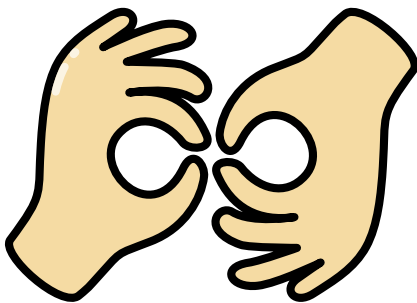
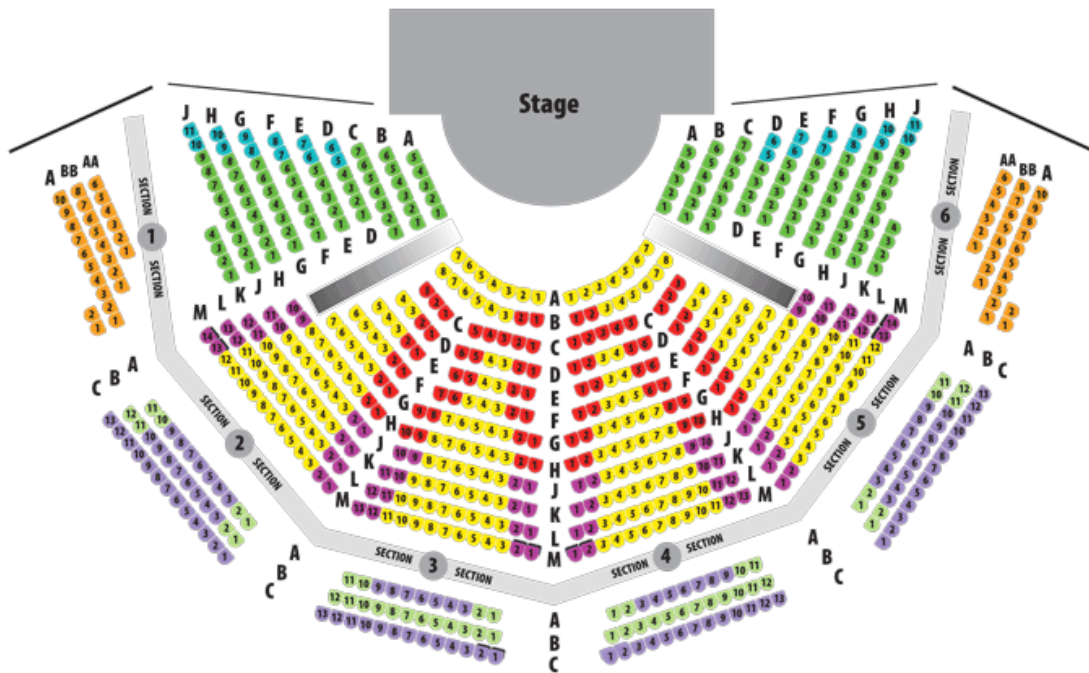
In the lobby, I can check out a sensory kit or listening device, buy a drink or snack, explore the touch table, and get help from Milwaukee Rep staff.



There are bathrooms in the lobby that I can use when I am at the play.

An usher will show us into the theater. I can sit wherever I want.

QUADRACCI POWERHOUSE THEATER



There will be ASL interpreters and captions during the play to help people understand what is being said on stage.



When I am waiting for the show to start, I can...

- Talk to others
- Look at the set
- Use my device
- Sit and wait



Before the play starts, the lights will dim. There may be an announcement over the loudspeakers or from someone on stage.

The play will begin when the characters start talking on stage.



Watching a play is like watching TV
or a movie, except the actors will
perform live in front of us.

The actors can see and hear me too!
I can't turn the volume up or down.

During the show I can:

- Watch and listen to the actors
- Hold things in my hand that make me feel comfortable
- Follow along with my visual agenda



- Applaud and laugh if I like something
- Get up and move if I need to



If the sounds onstage
get too loud, I can
wear headphones
or cover my ears.





If I need a break, I can leave or come back into the theater at any time.

There are quiet spaces in the lobby I can use if I need a break.



There are many things to watch
during the play:

- Lights
- Costumes
- Sets

Partway through the show, there will be a 10 minute break. This is called “intermission.” The actors will leave the stage and the lights will come back on.



During intermission I can:

- Talk to others
- Get up and walk around the theater or lobby
- Go to the bathroom
- Use my device





When the play is over, I can use ASL applause to let the actors, director, stage crew, and ushers know I enjoyed the show.



After the actors leave the stage and the lights come back up it will be time to leave.

When I go home, I can talk to my family and friends about the play.

If I have any questions about the play that weren't answered, I can email rkybee@milwaukeeep.com or katie@pinkumbrellatheater.org.

We can't wait to see you here at
Milwaukee Rep!

