

MILWAUKEE
REP

MARCH 3 — MARCH 29
QUADRACCI POWERHOUSE

ECLIPSED



By **Danai Gurira**
Directed by **May Adrales**

 **FOOTLIGHTS.COM[®]**



Let us create a space that's
Uniquely you.

At Warren Barnett, we are proud to create one-of-a-kind interiors that are infused with your sense of style. Our award-winning Interior Designers hand pick high-quality furniture and accessories to craft a living space that's uniquely you.

Stop by the showroom to get started.

WARREN BARNETT
INTERIORS

262.790.1111

14755 West Capitol Drive | Brookfield, WI
warrenbarnett.com

Stickley : Lillian August : Century : Hickory White : Thayer Coggin : Hancock and Moore : Warren Barnett Boutique

Elaine's Hope

LUTHERAN HOME MEMORY CARE

NOW OPEN



The Lutheran Home is proud to present Elaine's Hope, our new memory care community. Learn more about this new community and all our senior care options.

Contact us today! 414-326-3398

www.thelutheranhome.org



19-20 SEASON

VOLUME 30 | ISSUE #3

SALES SUPPORT **Natasha Goeller**



MARCUS PROMOTIONS, INC.

CHICAGO // MADISON // MILWAUKEE

Milwaukee: 262.782.9751 | Chicago 773.938.6681 | Madison: 608.257.4560

www.footlights.com

Footlights is published by Marcus Promotions, Inc. The content of any article in this publication is based solely on the opinion of its writer and does not necessarily reflect the opinion of Marcus Promotions, Inc., Footlights, or its staff. The center program content is at the sole discretion of the performing arts group. Any errors, omissions, or inconsistencies are their responsibility. Inquiries or comments should be directed accordingly.



Over 8,000 Wines
3,500 Liquors & 1,500 Beers

HIGH END LABELS AT EVERYDAY LOW PRICES

Award winning reputation

Named one of the 50 best wine stores in America

Voted #1 Best Liquor Store, Service, Selection and Price
by Milwaukee Magazine

Voted "Best Wine, Beer and Liquor Store"
2001-2019 by Shepherd Express Readers

Voted Top Choice Award Beer Wine Liquor Store
2019 by Milwaukee Journal Sentinel

Discount
LIQUOR
INC.

Locally Family Owned & Operated Since 1960

Milwaukee | 5031 W Oklahoma Ave. | 414.545.2175

Waukesha | 919 N Barstow Ave. | 262.547.7525

Visit us on Facebook, Twitter, Instagram or at www.discountliquor.com



WE CAN HELP YOU
WITH THE *next step.*

Independent, Assisted Living and Memory Care Communities



Premier Amenities • Personalized Care Plans • Luxury Lifestyle

HERITAGE
SENIOR LIVING



Greenfield • New Berlin
West Allis • Elm Grove
Waukesha • Menomonee Falls
Hartland • Muskego
heritagesenior.com

**Schedule your
tour today!**

844-658-4475

AT YOUR SERVICE. AT YOUR SIDE.



Mark Krause, Owner

For over 80 years, we have helped the families of Milwaukee and New Berlin honor their loved ones. Being a family owned funeral home, we understand the importance of family values. That's why we take pride in fulfilling your wishes with kindness, compassion and respect. We devote ourselves to the complete care of you and your family, guiding you every step of the way through one of life's most difficult times. When you need us most, we'll be right there by your side. That's our promise.

"Stop by anytime and see everything we have to offer."

Milwaukee
414-354-9400

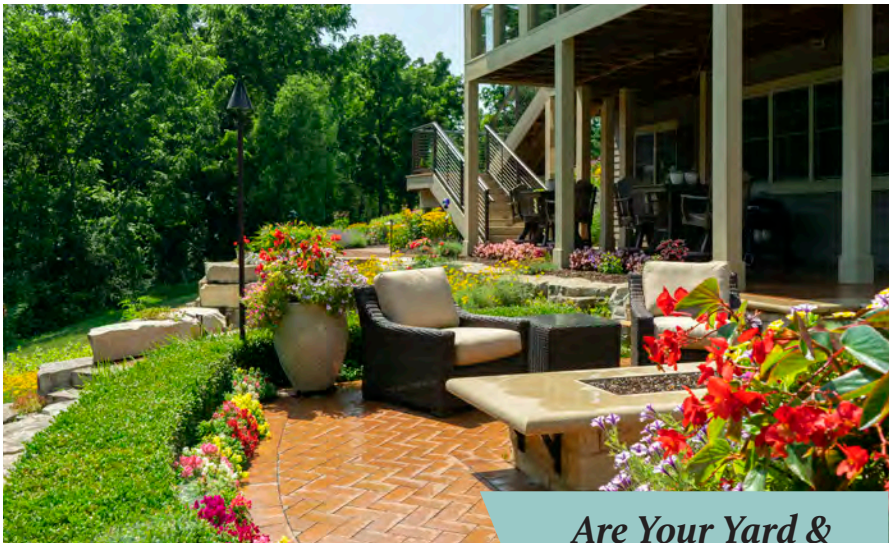
Brookfield
262-432-8300

Milwaukee
414-464-4640

New Berlin
262-786-8009



FUNERAL HOMES & CREMATION SERVICE, INC.



David J. Frank
Landscape Contracting

***Are Your Yard &
Home in Harmony?***

Request a quote today!
davidjfrank.com

FROM THE HEART: THE LOVE STORIES OF MILWAUKEE THEATRE

By Ryan Albrechtson

There's no business like show business. For many artists, their love of the arts consumes their lives... sometimes even including their love lives! We sat down with some of our favorite local artist couples to talk about what it really takes to keep the romance alive while both building a career in the performing arts.

Jane + Chris FUELLER



"Chris and I met when I moved to Milwaukee from Detroit following my graduation from Wayne State University with a degree in Stage Management," said Jane. "He had just gotten back from a summer at the Utah Shakespeare Festival... I worked as a stage manager for a company called Theatre Tesseract. Rehearsals started two weeks after I moved here, and Chris was in the cast. We began dating before the show closed and we've been inseparable ever since."

Jane and Chris's love of this artform led to the birth of what would become a large staple in the Milwaukee theatre community: In Tandem Theatre. "We realized that we wanted to work together in our chosen industry, and that the only way to do so was to form our own company - hence, In Tandem Theatre was born," said Jane, who ran the company with her husband for over two decades. And while the dynamic duo decided to take a step back after 21 seasons, they've found that the freed up nights and weekends have given them more down time to spend together.

Brenda + Randall DODGE



"It was a showmance!" said Brenda. "We met onstage in a 2005 production of *The Pirates of Penzance* at the Moonlight Amphitheatre in Southern California."

Brenda and Randall opened Forte Theatre, a professional company based in Franklin. Their inaugural production, *Miracle on 34th Street*, ran this past December.

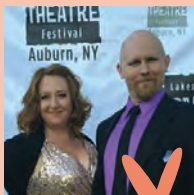
"The advantage of creating a theatre company together is that we wake up every day working side by side towards the same goal. The challenge is that we wake up every day working side by side towards the same goal," said Brenda. "All kidding aside, it's pretty incredible to share the same vision and be in the trenches every day with your partner, colleague and best friend."

The couple, and their new company, are quite the ambitious force. Currently, they are campaigning to purchase and renovate a historic hardware store in Franklin to turn into a new theatre space.

"The advantages of being a theatre couple are that you have someone who truly understands what it is like..."

- MARCEE DOHERTY-ELST -

MARCEE DOHERTY-ELST + CHRISTOPHER ELST



"We actually met doing a show," said Marcee, who met Christopher in 2008. "We were both in *You're A Good Man, Charlie Brown*. Christopher played Charlie Brown and I played Lucy!" Although they developed a friendship during the process, it wasn't until after the show had closed that they began to date.

Their passion for theatre went to the next level in 2013, when the couple opened their own theatre company: Theater RED. And while they've worked together on many shows with the company, and with other groups, being in the arts means that their schedules don't always align. "Being a theatre couple mostly means not seeing each other all that often," said Christopher. "The good news is we both understand a theatre schedule, so we're not as put out as the average person might be when a production bites a month or two out of the standard social schedule."

"The advantages of being a theatre couple are that you have someone who truly understands what it is like to audition, rehearse, perform and all the nerves, ups, and downs that go along with it," said Marcee. "Christopher knows what it is like for me to go into an audition, nerves aplenty, and either walk out feeling great or walk out wanting to bury my head in the sand. Christopher knows the stress, exhaustion, and joy of tech week. Christopher knows the joy of getting a role you really want and the disappointment of not."

SUSAN + ANDREW VARELA



"We met on the National tour of the show *Evita*," said Susan. We became friends right away, but didn't start dating until the tour ended."

Susan and Andrew, after establishing themselves in New York, decided to make Milwaukee their new home. Both have performed with many local groups, and they've had the chance to work together on several projects, including *Sweeney Todd* and *Les Miserables* at Skylight Music Theatre.

"It can be challenging when a gig takes us away for weeks, or months," said Susan. "But we have a 'three week rule' - we can't go longer than that without seeing each other, no matter what. Even if it's only for 24 hours!"

That commitment to their art, and to each other, has helped them find a successful work/life balance. "We feel grateful to be in the same business, because we understand the requirements, schedule and commitment inherent in this life," said Susan.



"We met 36 years ago in San Francisco, while I was touring with *"MASTER HAROLD" ... and the boys,*" said Michael. "Ray was in the audience on our opening night there and we met at this very fancy dinner afterward."

Both Michael and Ray have had impressive performing careers, as well as taking on the hats of Artistic Directors. Ray served as Artistic Director of Skylight Music Theatre until last season, and Michael is currently in his last season as Artistic Director of Milwaukee Chamber Theatre.

"One of the greatest advantages is that we both understand the crazy highs and lows of a life in the theatre," said Michael. "There can certainly be a lot of joy and fulfillment, but there can also be a lot of instability and stress. It's a regular roller coaster. The greatest challenge is trying to find enough quality time together while we're both dealing with the long days and erratic hours."

With retirement on the horizon, the two look ahead to what other projects may arise. "It would be fun to act in something together. We haven't done that since *Guys and Dolls* at Skylight back in 1997," said Michael. "How about a gay *Odd Couple*?"

*"It would be fun to act in something together...
...How about a gay Odd Couple?"*

- C. MICHAEL WRIGHT -

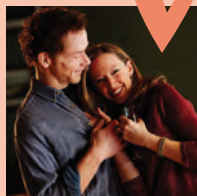


We met as performers in *Malt Shop Memories*, a jukebox musical written by a local artist," said Jes. Since then, the pair have worked on a variety of shows and projects together. Their creative personalities led them to founding the Sudbrink Performance Academy in 2015, a Waukesha based organization that offers classes and produces shows for youth performers.

The couple also run the Main Street Song and Dance Troupe, another youth arts organization. With all of these intertwined artistic endeavours, they've found there can be good and bad moments. "It makes planning a show much easier. We can have more discussion about vision and other things more often to keep the creative team on the same page," said Jacob. "Challenges come from being able to meet more often - especially if vision or ideas don't align. If you're not careful, that disagreement can carry into other parts of life."

"Working on a show together has advantages because we can stay up late at night in front of the fireplace, planning in the comfort of our home," added Jes. "We are often able to discuss a lot of the vision and intentions in the evenings and mornings, so we can arrive on the same page to meetings and rehearsals."

Laura GRAY + Jonathan WAINWRIGHT



"We met in 1999 during a Ten Minute Play Festival produced by Playwrights Studio Theatre at the Miramar Theater," said Laura. "It was my first show in Milwaukee after interning at Milwaukee Rep, and Jonathan was already working regularly with many local companies. Although we weren't in any of the same plays, there was an immediate connection and interest in each other."

Both Laura and Jonathan have built solid careers in the Milwaukee theatre community. And while their work spreads wide across a variety of companies, some of their favorite projects are when they get to work together.

"On occasion, we get to act opposite each other," said Laura. "As well as providing a chance to spend more time together, many of these moments acting with each other have been personal and professional highlights. Also, you have someone who you can come home to who understands the job. A partner you can spitball ideas with, work through a challenge, speak the same language. An ally who knows the ins and outs of the process and the highs and lows of the profession."

Tami WORKENTIN + Jim PICKERING




"Jim and I met when we worked on *Exonerated*, the inaugural production of Next Act's new space," said Tami. "Jim played a cop who interrogated my character, Sunny, who's husband was wrongly accused and placed on death row."

"Prior to the start of rehearsals I reached out to Jim via email to tell him how nice it will be to work together. He responded back with a list of rules of when I was allowed to speak to him, which was not before noon, and a number of other star requirements. I had no idea he was pulling my leg!"

The two of them have a long list of theatrical roles under their belts, many of which have been shared together. Most recently, the duo was seen in Milwaukee Rep's *A Christmas Carol*. "It's nice to have a shared experience especially during the hustle and bustle of the holidays," said Tami. "It feels like we truly experience the fullness of the season as we prance around in our Dickensian costumes like moving Christmas cards. I look across the rehearsal hall and see him kicking up his heels in the Fezziwig dance, then getting really frustrated with himself and his momentary two left feet, and it makes me giggle."

"He responded back with a list of rules of when I was allowed to speak to him, which was not before noon..."

- TAMI WORKENTIN -



We lost the child we knew.
Now we've found her again.
We will

Rise
above

If someone you love is struggling with mental health or addiction, you don't have to suffer alone. At Rogers Behavioral Health, together we can not only face your challenges, we can rise above them.

ROGERS
Behavioral Health

rogersbh.org | 800-767-4411

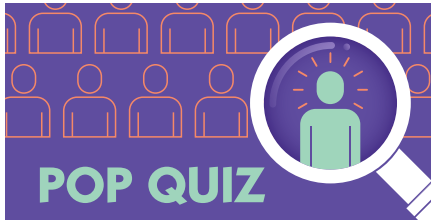
**#CAN YOU
HEAR MEMKE**

88.9 FM



**ELEVATING
ELECTRIC
HYPERDIMENSIONAL**

IMMORTAL GIRLFRIEND
MILWAUKEE BROTHER DUO
FULL ARTICLE AT RADIOMILWAUKEE.ORG




POP QUIZ

ARE YOU...
an extrovert?
good at connecting w/ others?
genuine and honest?
a good communicator?

DO YOU...
smile and laugh easily?
love the arts?
wish for a job w/ benefits and flexibility?

Did you or would someone you know answer yes to all of these questions? Footlights is growing and is seeking additional **Sales Executives**.

To apply, please contact our Director of Sales at mtthiele@footlights.com.

For more information & job opportunities visit:
 **FOOTLIGHTS.COM**

centuryhouseinc.com

art is everywhere



THE CENTURY HOUSE

Modern | Scandinavian Interiors

3029 university ave, madison




Treetops Landscape Design, Inc.

Landscape Architecture, Contracting & Property Management

(262) 375-0050 WWW.TREETOPSINC.COM

Announcing the 2020 *Footlights People's Choice Awards*

For the 4th year in a row, Footlights is proud to announce the 2020 Footlights People's Choice Awards. The event, which first began in 2017, is a celebration of all of the artists and arts organization in the Greater Milwaukee Area.

"We're so grateful for this opportunity to bring so many local artists together each year," said Ryan Albrechtson, the Footlights People's Choice Awards Chair. "Seeing all of the excitement, celebrating, and connecting on Awards night is one of the best parts of my job."

This 2020 Footlights People's Choice Awards will be held on Thursday, June 18th at the Broadway Theatre Center, sponsored by Skylight Music Theatre.

"We look forward to welcoming the arts community to our beautiful home, the Cabot Theatre," said Jack R. Lemmon, the Executive Director for Skylight Music Theatre. "As Skylight celebrates its 60th anniversary season this year, we are delighted to also celebrate our vibrant, local arts scene as sponsor of the 2020 Footlights People's Choice Awards."

In a change from the previous years, the 2020 Awards will have two co-hosts, who will follow in the footsteps of past hosts John McGivern and Matt Kemple. The first of the co-hosts is the incredible Rána Roman, a local performer who you've surely seen up on stage at Skylight Music Theatre, Milwaukee Repertory Theater, Renaissance Theaterworks, and many others. Stay tuned for our announcement of the second co-host.

Nominations for the 2020 Footlights People's Choice Awards will open on Thursday, January 2nd at 10:00am CST, and will remain open until Tuesday, March 31st at 11:59pm CST. Voting will begin on Monday, April 6th at 10:00am CST, and close Friday, April 24th at 11:59pm CST. Roman and her soon-to-be announced co-host will announce the finalists at a Finalist Happy Hour event on Thursday, May 7th at the Broadway Theatre Center.

As always, there will be a flurry of activity on the big day including the VIP Party, Red Carpet Hour, the Ceremony, and After Party. Make sure to keep your eye on Footlights.com, and follow us on social media, to be the first to know the details - from presenters, performers, and other special surprises!



Skylight
music theatre





***“I traveled
from Chicago
because this
is where
I found the
right cardiac
expertise.”***

– Dr. Boxer
Heart Patient

**Unmatched expertise.
Offering innovative heart
and vascular options.**

Soon after Dr. Robert Boxer, a retired physician, started having shortness of breath, he was diagnosed with congestive heart failure. Our expert team knew the MitraClip, a minimally invasive procedure, was the best course of action to stop the leaking in his heart valve. Dr. Boxer traveled to Milwaukee for surgery on Thursday and went home to his family in Chicago on Friday. For any heart or vascular issue, choose the team that delivers what is possible.



What Is Possible

Learn more about Dr. Boxer's story
at froedtert.com/possible

MILWAUKEE
REP

#WeRepMilwaukee

Milwaukee Rep is the largest performing arts organization in Wisconsin welcoming 300,000 people at 700 performances of 15 productions a season at the Patty & Jay Baker Theater Complex featuring three unique performance venues – the Quadracci Powerhouse (720 seats), Stiemke Studio (205 seats) and Stackner Cabaret (186 seats). For over six decades, Milwaukee Rep has been a centerpiece of Milwaukee's vibrant arts and cultural scene with productions ranging from Broadway musicals to Shakespeare to American Classics and New Works that are entertaining, inclusive and impactful.

Under the leadership of **Artistic Director Mark Clements** and **Executive Director Chad Bauman**, Milwaukee Rep creates world-class theater experiences for our audiences and uses education and civil engagement to bring diverse people together for healthy and respectful dialogue around important issues facing us today.

Just like Milwaukee, we're not what people usually expect. We're more diverse. More impactful. More modern. From the stage to the streets, the things we do, we do to bring out the best in our region. Our work is representative of Milwaukee's rich diversity as we aim to be a theater that is welcoming and inspiration to all.



Photos by Michael Brosilow – Top center: Michael J. Wu (center) and members of the 2018/19 Emerging Professional Residents in *Reb Lab* 2019.

Bottom: *West Side Story* – L-R: Isabel Bastardo, Brooke Johnson, Reese Parish, Terynn Erby-Walker, Courtney Arango, Isabella Abel-Suarez and Gina dePool. All other photos by Rep staff.

www.MilwaukeeRep.com | 414-224-9490

MILWAUKEE REP | PATRON SERVICES

Contact Info

Ticket Office

Phone Number: 414-224-9490

Fax Number: 414-225-5490

Mailing Address: Milwaukee Repertory Theater
Patty & Jay Baker Theater Complex
108 E. Wells Street; Milwaukee, WI 53202

E-mail: tickets@MilwaukeeRep.com

Hours of Operation:

Monday – Sunday Noon to 6 pm

On days with performances, the Ticket Office will remain open until show time.

Administrative Office

Phone Number: 414-224-1761

Fax Number: 414-224-9097

Mailing Address: Milwaukee Repertory Theater
Patty & Jay Baker Theater Complex
108 E. Wells Street; Milwaukee, WI 53202

Hours of Operation:

Monday – Friday 8:30 am to 5:30 pm

Emergency Phone Number

If you anticipate the need to be reached during a performance, leave your name and seat location with your contact information, along with instructions, to direct emergency phone calls to the House Manager at **414-290-5379** or **414-224-1761, ext. 379**.

Cellular Phones/Electronic Paging Devices

Please remember to turn off your cell phones and electronic paging devices.

In case of an emergency, these items may be left with the House Manager.

Also, as a courtesy to your fellow theatergoers and the actors on stage, please refrain from text messaging during the performance. Thank you!

YOUR MILWAUKEE REP EXPERIENCE

Concessions

Enjoy a drink or dessert in the Quadracci Powerhouse or Stiemke Studio lobby prior to the performance or at intermission. Please remember that food and drink (except bottled water and Rep sippy cups), are not allowed in the theater.

Gift Shop

Located in the Quadracci Powerhouse is The Rep's Gift Shop, which offers show-specific merchandise and Rep logo products, as well as books and scripts of current and past productions. You can also purchase parking passes.

Rep-in-Depth

Get an insider's look at the play from a member of the cast or artistic team with a discussion that begins approximately 45 minutes prior to every performance in the Quadracci Powerhouse and Stiemke Studio.

Rep TalkBacks

After select performances, engage in a deeper conversation with members of the cast, artistic team and occasional special guests. Get TalkBack schedules by calling the Ticket Office at **414-224-9490**, online at www.MilwaukeeRep.com.

MILWAUKEE REP SERVICES

Access



Deaf or Hard of Hearing Services: The Quadracci Powerhouse (QP) and the Stiemke Studio are equipped with an **infrared listening system** which ensures clarity of sound from any seat in the house. Performances are offered in **American Sign Language** for a Thursday evening of all QP productions and one Sunday matinee for all Stiemke Studio productions. We also offer a **Captioned Theater** performance during the second to last Sunday matinee performance of all QP productions. Please call The Rep Ticket Office at **414-224-9490** for more information. **Script synopses** are available upon request for QP and Stiemke Studio productions by calling **414-224-1761**.

Blind or Low Vision Services: Large print programs are available in the Quadracci Powerhouse and Stiemke Studio from any usher. Every Rep production has one **audio-described performance**. Using an earpiece attached to a small hand-held receiver, patrons hear a live, real-time description of the action on stage. Call the Ticket Office for more information.

Wheelchairs All Rep stages are fully accessible. Please contact the Ticket Office at **414-224-9490**.

Late Arrivals

Out of courtesy to the actors and audience, patrons arriving after the performance has started will be seated at the discretion of House Management.

Parking

Milwaukee Center offers onsite parking with indoor access to The Rep operated by InterPark. Enter from Kilbourn Avenue or Water Street.

Policy on Children

Children under age seven are not admitted in the theater.

Recording Equipment and Cameras

The use of recording equipment and cameras in the theater is strictly forbidden.

MILWAUKEE REPERTORY THEATER

#DestinyOfDesireMKE @milwrep

APRIL 21 - MAY 17, 2020 | QUADRACCI POWERHOUSE

*Telenovela of **Passion and Deception**
with Lively **Music and Dance!***

DESTINY of Desire

*"Simply fabulous
and riotously funny...
HIGHLY ENTERTAINING"
— Chicago Tribune*

By **Karen Zacarias**
Directed by **José Luis Valenzuela**

**MILWAUKEE
REP**

Sponsored by



**Rockwell
Automation**

Executive Producers **Rhonda & Greg Oberland**
Associate Producers **Molly and David Fritz**

www.MilwaukeeRep.com | 414-224-9490

Photo by Tony Arrasmith/Arrasmith and Associates featuring Courtney Arango and Stephanie Gómez

Creating **brighter futures**

We Energies is proud to support
Milwaukee Repertory Theater in bringing
arts and culture to southeast Wisconsin.
Together we are creating a brighter future for
the communities we serve.

we-energies.com



Mark Clements
Artistic Director



Chad Bauman
Executive Director

Milwaukee Repertory Theater presents

ECLIPSED

By **Danai Gurira**

Directed by **May Adrales ♦**

Scenic Designer
Collette Pollard

Costume Designer
Kara Harmon

Lighting Designer
Annie Wiegand

Sound Designer
Fan Zhang

Voice & Text Director
Judith Moreland

Production Dramaturg
Deanie Vallone

Casting Director
Frank Honts

Stage Manager
Kimberly Carolus*

March 3 – 29, 2020
Quadracci Powerhouse

Sponsored by



Executive Producers

Jackie Herd-Barber and Michael Barber
Judy Hansen

Associate Producer

Catherine and Buddy Robinson

Sponsored in part by



Eclipsed is presented by special arrangement with Dramatists Play Service, Inc., New York.

Eclipsed was originally produced in August 2009
by Woolly Mammoth Theatre Company, Washington D.C.,
(Howard Shalwitz, Artistic Director; Jeffrey Herrmann, Managing Director).

Eclipsed was developed with the support of McCarter Theater,
Princeton, NJ (Emily Mann, Artistic Director) and developed by
the Ojai Playwrights Conference (Robert Egan, Artistic Director).

♦ A member of Stage Directors and Choreographers Society, an independent national labor union.

*Member of Actors' Equity Association, the Union of Professional Actors and Stage Managers in the United States.

RAISE A GLASS AT

* GIGGLY *



Milwaukee's Only Champagne Bar

2nd floor of Saint Kate - The Arts Hotel
SaintKateArts.com/Dining/Giggly

CAST

Wife #1	Jacqueline Nwabueze*
Wife #2	Ashleigh Awusie*
Wife #3	Sola Thompson*
Wife #4	Matty Sangare*
Rita/Radio Voices	Nancy Moricette*

UNDERSTUDIES:

For Ashleigh Awusie, Nancy Moricette and Jacqueline Nwabueze – **Lauryn Glenn**;
Matty Sangare and Sola Thompson – **Nadja Simmonds**

Understudies never substituted for listed players unless a specific announcement is made prior to the performance.

PRODUCTION SUPPORT

Fight Director	Samantha Kaufman
Assistant Stage Manager	Rebecca Lindsey*
Stage Management Resident.....	Abbi Hess
Assistant Director	Kelsey Robins
Production ASL Interpreters.....	Pamela Sue Conine, Cara Schwartz

Eclipsed will be performed with a 20 minute intermission.

The videotaping or other video or audio recording of this production is strictly prohibited.

* Member of Actors' Equity Association, the Union of Professional Actors and Stage Managers in the United States.

SPECIAL THANKS

Hoppe Tree Service

PRODUCTION STAFF

Director of Production.....	Jared Clarkin
Associate Production Manager	Kaitlyn Anderson
Co-Technical Director	John Houtler-McCoy
Co-Technical Director.....	Sean Walters
Properties Director.....	Jim Guy
Charge Scenic Artist	Jim Medved
Costume Director	Nicholas Hartman
Lighting & Video Director	Aaron Lichamer
Sound Director	J Jumbelic
Production Stage Manager	Kimberly Carolus*

Milwaukee Repertory Theater operates under an agreement between the League of Resident Theatres and Actors' Equity Association, the Union of Professional Actors and Stage Managers in the United States. The scenic, costume, lighting and sound designers in LORT Theatres are represented by United Scenic Artists, Local USA-829 of the IATSE and our stagehands and carpenters are members of Milwaukee Theatrical Stage Employees' Union IATSE Local 18. The Rep is an equal opportunity employer. Milwaukee Rep is proud to be a member of The United Performing Arts Fund (UPAF), which provides major annual financial support.





SEE YOUR GIFT INSPIRE



UNITEDPERFORMINGARTSFUND

INVEST IN INSPIRATION

When you donate to the United Performing Arts Fund, you support more than a show. Your gift is an investment in our local community, helping to enrich our culture, the economy and arts education for the children in our area. Let that be your cue to act.

DONATE TODAY AT UPAF.ORG/DONATE.

Milwaukee Ballet, *The Nutcracker*, 2017, Marize Fumero, Photo by Mark Frohna;
First Stage, *The Wiz*, DiMonte Henning, Darrington Clark and Reese Parish, Photo by Paul Ruffolo;
Milwaukee Youth Symphony Orchestra, Photo by Ron Oshima

DIRECTOR'S NOTES



Liberia is over 5,000 miles away from the United States; a massive ocean separates us. Yet, the history of the United States and Liberia are inextricably intertwined. When planning out the 2019/20 Season, our entire team was drawn to this piece



both for its powerfully moving portrayal of fortitude and sisterhood in the face of violence, but also for the way it redefines what we consider the “American story.” Liberia was founded by emancipated slaves and even after its independence, the United States has been a presence in Liberia’s history. From exploiting Liberia’s resource of rubber to utilizing the country during the Cold War to turning a blind eye to the Liberian Civil Wars, for better or worse, Liberia’s story is America’s story too. Being able to tell this story through the eyes of some of its most oppressed yet most impactful players was an opportunity I felt privileged to accept.

In our creative process, we spoke much about the title of the play and the significance of the word “eclipse.” The young women in this story were eclipsed by the horrific violence surrounding them. Traumatized and fearful, they must obscure their own personal history, desires and ambitions, and even their own names. This play allows the light and truth of these courageous women to shine through one of the darkest periods of modern history.

The resilience of these women is a story that Gurira—and Milwaukee Rep—felt needed to be told. I’m grateful for the opportunity to bring their story to Milwaukee audiences, and to be joined by a supremely generous and talented all-female cast and creative team. Working on this play has made us laugh, made us cry, and made us more deeply empathize with those outside of our city, our state, our country. We hope in seeing this story and witnessing the enduring strength of these women, you find the same renewed sense of hope as we did while making it.

May Adrales

Director, *Eclipsed*

Rep Associate Artistic Director

POP QUIZ

ARE YOU...

an extrovert?
good at connecting with others?
genuine and honest?
a good communicator?

DO YOU...

smile and laugh easily?
love the arts?
wish for a job with benefits?
wish for a job with flexibility?

Did you or would someone you know answer yes to all of these questions?
Footlights is growing and seeking additional **Sales Executives**.

To apply, please contact our Director of Sales
at mthiele@footlights.com.



For more information & job opportunities visit:

FOOTLIGHTS.COM

BIOGRAPHIES



Jacqueline Nwabueze,
Wife #1

Classically and contemporaneously trained, Jacqueline has played representative roles from Chekhov and Shakespeare to Lynn Nottage and Danaï Gurira at Columbia University where she received her MFA. She hails from Brooklyn, NY (Shoutout to Flatbush!). She graduated with a BS in mechanical engineering from Columbia University School of Engineering and Applied Science. Jacqueline is highly optimistic and hardworking and looks forward to acting in any “Black Panther” spinoff. Off-Broadway: *Measure for Measure* (The Public).



Ashleigh Awusie,
Wife #2

Ashleigh Awusie is an actress from NYC and recent graduate of the Royal Welsh College of Music & Drama. UK credits include: *Kasimir and Karoline* at the Gate Theatre in London, *Machinal* at the Richard Burton Theatre and the solo play, *Anansi*, at the Caird Studio Theatre in Wales. Other credits include: *Dreamprints: A Conversation with Harriet Tubman* at Syracuse Stage, *Ain't Never Been Easy* at Castillo Theatre and Shakespeare in the Boroughs with the Public Theater. Film: the Netflix indie feature, “Naz & Maalik” and upcoming short, “Hush.” “Be great! Create on purpose.”



Sola Thompson,
Wife #3

Sola Thompson makes her Milwaukee Rep debut. She is a proud Nigerian-born, Milwaukee-raised actor and teaching artist. Theatre credits include *La La La Strada* (Proboscis Theatre), *Eclipsed* (Pegasus Theatre), *Hearts Like Fists*, *Harry*

and the Thief (Know Theatre of Cincinnati), *Suddenly Last Summer* (Uprooted Theatre), *The Mountaintop*, *Around the World in 80 Days* (Ensemble Theatre Cincinnati). Awards: Black Theatre Alliance nomination for Most Promising Actress, Jeff Award nomination for Best Ensemble (*Eclipsed*). She holds a B.A. from University of Wisconsin-Milwaukee and an M.F.A. from The Theatre School at DePaul University. She is represented by Grossman and Jack Talent. Love to Dillon.



Matty Sangare,
Wife #4

Matty Sangare is excited to be making her debut at Milwaukee Repertory Theater. Matty is a first-generation West African actor based in NYC. She is currently writing a play and has most recently starred in a short film that she directed and co-wrote. She is a recent grad from Brooklyn College where she received her BFA in Acting. She's super excited to be a part of *Eclipsed* and wants to thank everyone in her life especially her mom and little sister.



Nancy Moricette,
Rita/Radio Voices

Nancy Moricette is a Haitian American actor/vist who performed at the Public Theater, Lookingglass Theatre, Goodman Theatre, Steppenwolf Theatre, Chicago Dramatists, Writers Theatre, Chicago Shakespeare Theatre, Wilma Theater, Woolly Mammoth Theatre, The Williams Project and most recently as Abasiama in Mfoniso Udofia's *In Old Age* at the Magic Theatre. You might have seen her in commercials for Credit Karma, Booking.com or Sonos. She is represented by Reign Talent Agency in L.A. and About Artists Talent in N.Y. For more information about Nancy visit one of her nifty websites. www.asepowerconsult.com. nmoricette.wixsite.com/nancymoricette

Danai Gurira,
Playwright

Danai Gurira is an award-winning playwright and actor. Gurira was recently seen in Marvel's blockbuster phenomenon "Black Panther" as General Okoye and reprised the role in the film and reprised the role in the films "Avengers: Infinity War" and "Avengers: Endgame." Gurira currently stars as Michonne on AMC's "The Walking Dead" (NAACP Image Award nomination). Other select acting credits include the films "All Eyez on Me" (NAACP Image Award nomination), "The Visitor," "Mother of George" and the NYS&F's "Measure for Measure" (Equity Callaway Award). Gurira is currently adapting Chimamanda Ngozi Adichie's book *Americanah* into a miniseries. As a playwright, her works include *In the Continuum* (OBIE Award, Outer Critics Award, Helen Hayes Award), *Eclipsed* (Tony Award Nomination: Best Play; NAACP Award; Helen Hayes Award: Best New Play; Connecticut Critics Circle Award: Outstanding Production of a Play) and *The Convert* (six Ovation Awards, Los Angeles Outer Critics Award). *Eclipsed* was developed at the Woolly Mammoth Theatre Company where it premiered in September 2009. It was produced Off-Broadway at The Public Theater, then transferred to Broadway in 2016 where it was nominated for six Tony Awards, including Best Play. It became the first play with an all-black and female creative cast and team to premiere on Broadway. She is a recipient of the Sam Norkin Award at the 2016 Drama Desk Awards, a Whiting Award, a Hodder Fellow and has been commissioned by Yale Rep, Center Theatre Group, Playwrights Horizons and the Royal Court. Born in the US to Zimbabwean parents and raised in Zimbabwe, she holds an M.F.A. from Tisch, NYU and serves as an ambassador for Bono's ONE campaign. She is also the founder of LOGpledge.org (Love Our Girls), an awareness-building campaign focused on the plights of women and girls around the globe; and the

co-founder of Almasi Arts, which works to give access and opportunity to the African Dramatic Artist.

**May Adrales,**
Director

May is thrilled to direct *Eclipsed*. Previous Milwaukee Rep credits include *Yellowman*, *The Mountaintop*, *after all the terrible things I do*, *The Who & The What*, *Animal Farm*, *In the Heights* and *The Chinese Lady*. She has worked nationally, primarily directing new plays including Qui Nguyen's award-winning *Vietgone* (Manhattan Theatre Club, South Coast Rep, Oregon Shakespeare Festival and Seattle Rep). Her work has been seen at Lincoln Center Theater, the Public Theater, Signature Theatre, Second Stage Theater, Old Globe, Hudson Valley Shakespeare, Actors Theatre of Louisville, Goodman Theatre, Two River Theater, Portland Center Stage, Cleveland Play House and Syracuse Stage. She proudly serves as an Associate Artistic Director at Milwaukee Rep. She is a former Director of On-Site Programs at the Lark Play Development Center and Artistic Associate at the Public Theater. She received the Alan Schneider Director Award, TCG New Generations Grant, Denham Fellowship and Drama League Fellowship. She has taught on faculty at Brown and Yale and been a guest teacher/director at Juilliard, ACT, ART/Harvard and NYU. MFA, Yale School of Drama. www.mayadrales.net

Collette Pollard,
Scenic Designer

Collette Pollard returns to Milwaukee Rep where credits include *The Legend of Georgia McBride*, *The Chinese Lady* and *Low Down Dirty Blues*. Recent Chicago credits include: *Roe*, *The Wolves* and *The Happiest Song Plays Last* (Goodman Theatre), *Lindiwe*, *HIR*, *The Fundamentals* and *Between Riverside and Crazy* (Steppenwolf Theatre Company), *Miracle* (Miracle Productions), *Smart People*

(Writers Theatre), *The Nutcracker* (The House Theatre, where she is a company member) and *A Shayna Maidel* (TimeLine Theatre, where she is an artistic associate). Recent and upcoming regional credits include *The Legend of Georgia McBride* (Milwaukee Repertory Theater and Arizona Theatre Company), *A Doll's House, Part 2* (Cleveland Play House), *My Father's War* (TheatreSquared) and *The Cake* (Asolo Repertory Theatre). Collette is the recipient of several Jeff Awards and is an Associate Professor of Design at the School of Theatre and Music at UIC. Many thanks to the endless support from her family.

Kara Harmon,
Costume Designer

Off Broadway credits include: *Dot* (Vineyard Theatre) and *Lockdown* (Rattlestick). Select Regional credits include: *Steel Magnolias* and *Guys and Dolls* (Guthrie Theater), *The Wiz!* – Helen Hayes Costume Design Award (Ford's Theatre), *The Purists*, *The Niceties* and *A Guide for the Homesick* (Huntington Theatre), *Nina Simone: Four Women* (Arena Stage), *The Color Purple* (Portland Center Stage), *Barbecue* – NAACP Outstanding Costume Design Award (Geffen Playhouse), *Much Ado About Nothing* and *The Comedy of Errors* (OSF) and world premieres: *Goodnight, Tyler and Angry... Gorgeous* (Alliance Theatre). Her assistant costume design credits for television include "The Marvelous Mrs. Maisel" (Amazon), "Daredevil" (Netflix) and "Boardwalk Empire" (HBO). karaharmondesign.com.

Annie Wiegand,
Lighting Designer

Annie Wiegand is a professional lighting designer who happens to be deaf. Off-Broadway: *I Was Most Alive With You* (Playwrights Horizons). Select Regional: *Steel Magnolias*, *Into the Breeches* (Alabama Shakespeare Festival); *Steel Magnolias* (Dallas Theater Center); *The Who and The What* (Huntington Theatre Company); *The Children*, *Matt and Ben* and *Brahman/I*

(Kitchen Theatre Company); *Small Mouth Sounds*, *The Bridges of Madison County* (IRNE Nominee for Best Lighting Design) and *Tribes* (Speakeasy Stage Company). Assistant Professor, Theatre Arts Program, Gallaudet University, Washington, DC. www.anniewiegand.com

Fan Zhang,
Sound Designer

Fan Zhang, sound designer, composer. Her recent Off-Broadway credits include: *Paris* (Atlantic Theater), *Our Dear Dead Drug Lord* (Second Stage & Women's Project), *Pumpgirl* (Irish Rep), *Suicide Forest* (Ma-Yi & A.R.T.), *Molly Sweeney* (Theatre Row), *Round Table* (59E59), *Behind the Sheet* (Ensemble Studio), *The Trail of the Catonsville Nine* (Transport Group), *Scissoring* (INTAR), *Beautiful Day Without You* (West End), *three girls never learnt the way home* (Cherry Lane), *Tania in the Getaway Van* (The Flea). Selected regional: *Pipeline* (Studio Theatre, D.C.), *The Chinese Lady* (Long Wharf), *Yasmina's Necklace* (Premiere Stages), *Seven Guitars* (Yale Rep), *Redeem* (Cincinnati Ballet), *Revolutionist* (Pittsburgh City Theatre), *Red Maple* (Capital Rep). Training: MFA, Yale School of Drama.

Judith Moreland,
Voice & Text Director

Judith Moreland previously worked with May Adrales as a voice and dialect coach on *Little Black Shadows* and *Poor Yella Rednecks*, both at South Coast Repertory. Acting film and television credits include "Aftermath," "Eagle Eye," "Blackish," "Grey's Anatomy," "Parks and Recreation," "The Big Bang Theory" and "Bosch." She's performed and coached with many theater companies including the New York Shakespeare Festival, Playwrights Horizons, Shakespeare Center of Los Angeles and American Conservatory Theater. Directing credits include Capital Stage Company, The Road Theatre, The Blank Theatre, Inkwell and UCLA School of Theater, Film and Television where she is a faculty member.

Deanie Vallone,
Production Dramaturg

Deanie is in her third season at Milwaukee Rep, now as Literary Manager. Select Milwaukee Rep dramaturgical credits include *The Chinese Lady*, *Junk*, *Songs for Nobodies*, *Lost Girl* and numerous new play development workshops. She has previously worked at Baltimore Center Stage and Asolo Repertory Theatre and was a former Milwaukee Rep Education Intern (2014/15 Season). Outside of theater, she is a lecturer with Osher Lifelong Learning Institute through UWM and trains birds of prey with the Schlitz Audubon Nature Center. She received her MA in English from St. John's College, University of Cambridge.

Frank Honts,
Casting Director

Frank is Director of Artistic Personnel at Milwaukee Rep. Prior to joining the Rep staff in 2016, Frank worked at a number of regional theaters, including Utah Shakespeare Festival, Renaissance Theaterworks, The Goodman, California Shakespeare Theater, A Contemporary Theatre (Seattle), and Paramount Theatre. He has worked extensively as both a director and dramaturg, and was honored to be a directing resident at Milwaukee Rep in the 2013/14 Season. Frank spent two seasons as Artistic Associate at Forward Theater Company in Madison, and he was the inaugural recipient of the Michael Flachmann Fellowship at Utah Shakespeare Festival. He is a graduate of Brown University in Providence, Rhode Island. Frank would like to thank Casting Assistants Thaddeus Kaszuba, Dylan Sladky and Sara Zientek, whose dedicated efforts have helped make this season possible.

Kimberly Carolus,
Stage Manager

Kimberly is delighted to be in her seventh season with Milwaukee Rep. Some favorites from her time here include *West Side Story*, *In the Heights*, *The Chinese Lady*, *An Iliad*, after all the terrible things I do and seven seasons of *A Christmas Carol*. Kimberly has also worked at Great River Shakespeare Festival, First Stage, Fulton Theatre, Riverside Theatre in the Park (Iowa City, IA) and Walt Disney World. She would like to thank her family and S for their endless love and support.

Rebecca Lindsey,
Assistant Stage Manager

Becca is thrilled to continue her twelfth season as a member of the stage management team at Milwaukee Rep. Favorite credits from the past decade include *Good People*, *An Iliad*, *Things I Know to be True* and of course several years of *A Christmas Carol*. She spends her time away from Milwaukee as a Stage Manager and Core Tech Company member at American Players Theatre, where she has enjoyed 13 seasons working on pieces such as *A Midsummer Night's Dream*, *A View from the Bridge* and *A Doll's House*.

Abbi Hess,
Stage Management Resident

Abbi is a graduate of Carroll University's Theatre Arts and History departments. A Waukesha native, she has spent the last 5 years working with theatres in the area, especially with Outskirts Theatre Co. Her favorite past stage management credits include: *Bare* and *Wonderland* (Outskirts Theatre Co.), *Next to Normal* and *Hamlet: A Cover* (Carroll University) and *Mary Poppins* (Sunset Playhouse). She is very excited and honored to be working at Milwaukee Rep! Her thanks and love goes out to her supportive family and friends for giving her the confidence to be here.

BIOGRAPHIES CONT.

Kelsey Robins, *Assistant Director*

Kelsey is a recent graduate of Northwestern University, where she majored in Theatre and Legal Studies and minored in Comparative Literature. Directing highlights included *Cabaret*, *Ghost Quartet* and an all-female production of *1776*. She also served as the Executive Director of Northwestern's classic and classically inspired theatre group, *Lovers & Madmen*. As an Assistant Director, Kelsey has worked on *Hedwig and the Angry Inch*, *A Christmas Carol*, *Nunsense*, *The Niceties*, *2 Pianos 4 Hands* (Milwaukee Rep); *King Lear*, *All's Well That Ends Well* (Hip to Hip); *A Chorus Line*, *Vinegar Tom* (Northwestern University); and as Assistant to the Director on *The Music Man* (Goodman Theatre, dir. Mary Zimmerman). You can check out her work at kelseyrobins.com



Mark Clements, *Artistic Director*

Mark is an award-winning international theater director whose work has appeared in over 100 major theaters throughout Europe and the United States. He began his tenure as Artistic Director with the 2010/11 Season by bringing musicals to the mainstage, starting a tradition that is now the highlight of every season, including *Cabaret*, *Next To Normal*, *Assassins*, *Ragtime*, *Dreamgirls*, *The Color Purple*, *Man of La Mancha*, *Guys and Dolls*, *In the Heights* and *West Side Story*. Milwaukee Rep directing credits include the world premieres of *One House Over*, his own adaptation of the current *A Christmas Carol*, *Five Presidents* and *American Song*. Also directed for Milwaukee Rep: *Hedwig and the Angry Inch*, *Things I Know To Be True* (American Premiere), *Junk*, *The Glass*



Have your next event on *Broadway!*

On stage or off, your event will be unforgettable at the Broadway Theatre Center.

Take full advantage of our extraordinary theatre and event spaces
and evoke the style and grace of a fabulous bygone era.

Cabot Theatre • Studio Theatre • Dorothea C. Mayer Salon • Skylight Bar & Bistro • Lobby areas

Rental space available for all occasions • Weddings, parties, showers, meetings and more!

Accommodations for groups of all sizes, from 10 to 450.

Exquisite catering by our preferred caterer. Indulge Wine Room, with personalized menus to fit all needs and budgets.

158 N. Broadway
in the Historic Third Ward

Contact
events@skylightmusictheatre.org

Call Today:
(414) 299-4957

Something New Is On The Horizon

- Spectacular apartment homes still available -



The best in retirement living includes...

- A culturally respectful and intellectually stimulating community
- LifeStreams - our holistic person-centered approach to wellness
- A 67,000 sq ft Town Center

Call 414-831-7300 today!

LOOKING
BACK ON
150
YEARS
OF LOOKING
FORWARD

SAINT JOHN'S
ON THE LAKE

www.SaintJohnsMilw.org 414-831-7300
1840 North Prospect Avenue, Milwaukee

Taking better care of yourself starts with finding the best doctors *to take care of you.*

INTERNAL MEDICINE



Kathleen Baugrud, M.D.



John Betz, M.D.



Matthew Connolly, M.D.



Kevin DiNapoli, M.D.



Deidre Faust, M.D.



Maria Ignacio Vitug, M.D.



Scott Jorgensen, M.D.



Unchu Ko, M.D.



David Lucke, M.D.



Rachel Oosterbaan, M.D.



John Sandidas, M.D.



Abraham Varghese, M.D.



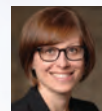
James Volberding, M.D.



Daniel Butz, M.D.



Richard Cattey, M.D.



Jasna Coralic, M.D.

SURGERY

GASTROENTEROLOGY



Alyandra Lal, M.D.



Joseph Regan, M.D.



Craig Siverhus, M.D.



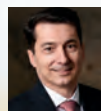
Vincents Dindzans, M.D.



Drew Elgin, M.D.



Vijay Khiani, M.D.



Venelin Kounnev, M.D.



Srihari Ramanujam, M.D.

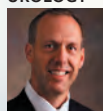
UROLOGY



Jeffrey Schenck, M.D.



Chad Stepke, M.D.



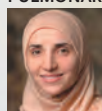
Kevin Gee, M.D.



Christopher Kearns, M.D.



Peter Slocum, M.D.



Dima Adl, M.D.



Jay Balachandran, M.D.



Burak Gurses, M.D.

ENDOCRINOLOGY



Amy DeGueme, M.D.



Elaine Drobny, M.D.



Antoni Gofron, M.D.



Brent Jones, M.D.



Kawaljeet Kaur, M.D., M.S.



Carmen Balding, M.D.



Manish Gharia, M.D.



Camille Hessel, M.D.

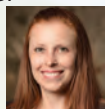
MOHS SURGERY



DERMATOLOGY



Amanda Cooper, M.D.



Tracy Donahue, M.D.



Valerie Lyon, M.D.



Jack Maloney, M.D.



Jason Rosenberg, M.D.



Debra Scarlett, M.D.



Thorstein Skulason, M.D.



Heather Wells, M.D.

COMPREHENSIVE EYE CARE



Lisa Bennett, M.D.



Thomas Bloom, M.D.



Kenneth Fabric, M.D.



James Ivanoski, O.D.



Martha Jay, M.D.



Fred Shalfrin, M.D.



Anne Lent, M.D.



Kristin Schroeder, M.D.

ALLERGY & IMMUNOLOGY

When it comes to healthcare, you shouldn't settle for anything less than the perfect fit.

You need physicians who are engaged. Who listen. Who spend time with you. We want to make a difference in your life, and the lives of your family.

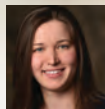
OBSTETRICS & GYNECOLOGY



Jonathan Berkoff, M.D.



Patricia Dolhun, M.D.



Katya Frantskevich, M.D.



Shireen Jayne, D.O.



Jennifer Morales, M.D.



MADISON MEDICAL
MILWAUKEE • MEQUON

MadisonMedical.com | 414.272.8950

EAST RESIDENCE INDEPENDENT LIVING



Our new distinctive East Residence
Independent Living is selling out fast!
Call us to explore the vibrant lifestyle possibilities at
St. Camillus and to reserve your apartment.

CONSTRUCTION HAS STARTED!



A Life Plan Community

414.259.6310

10200 W. Bluemound Rd. • Wauwatosa, WI 53226

Menagerie, Of Mice and Men, Othello, Death of a Salesman, The History of Involuntability, End of the Rainbow, Clybourne Park and Bombshells. Some of his New York and international work includes *Speaking in Tongues, The Milliner* and *Blunt Speaking*, in addition to creating and directing the West End and UK National Tour of *Soul Train*. Prior to joining The Rep, Mark served as an Associate Artistic Director for several UK theater companies, most notably, Artistic Director for the award-winning Derby Playhouse in the UK from 1992 - 2002, where he directed over 40 productions. He has been nominated for an Olivier Award and several UK Theatre Awards, and has won three Barrymore Awards from his time at Walnut Street Theatre in Philadelphia. He currently serves on the National Advisory Board for the Lunt-Fontanne Fellowship Program at Ten Chimneys. Mark is currently working with Ayad Akhtar on adapting his critically acclaimed novel *American Dervish* for the stage to make its world premiere at Milwaukee Rep in an upcoming season.



Chad Bauman,
Executive Director

Appointed in 2013, Chad is now in his seventh Season at Milwaukee Rep. Under his guidance, the theater has grown

significantly from a \$9M organization to a \$13M organization. He's completed two capital campaigns, one to remodel and expand the Stackner Cabaret and the other to build the endowment, launch the John (Jack) D. Lewis New Play Development Program, create a new *A Christmas Carol* and deepen the theater's community engagement programs. Through his efforts, the theater has been awarded UPAF's Good Steward Award four out of the last six years and became the only performing arts organization in Wisconsin with a 4 star rating from Charity Navigator. Before moving to Milwaukee, he was the Associate Executive Director

at Arena Stage in Washington, DC, where he was instrumental in opening the Mead Center for American Theater, a 200,000 square feet, three theater performing arts complex dedicated to American voices and playwrights. While at Arena Stage, he worked on the Broadway transfers of *Next to Normal* (Pulitzer Prize; Tony Award), *Who's Afraid of Virginia Woolf?* (Tony Award), *Wishful Drinking* starring Carrie Fisher, *Looped* starring Valerie Harper, and John Grisham's *A Time to Kill* in addition to the world premieres of Marcus Gardley's *Every Tongue Confess* starring Phylicia Rashad and *Red Hot Patriot* starring Kathleen Turner. He has been named to Milwaukee Business Journal's Top 40 under 40 and a "Friend of the Hispanic Community" by the United Community Center. He currently serves as the President of the Milwaukee Arts Partners, Vice President of the Board of Pathways High School, Chair of the Finance Committee of ImagineMKE, and Coordinator for Equity, Diversity & Inclusion for AFS Student Exchange Programs. Bauman is a graduate of Harvard Business School's Strategic Perspectives in Non-Profit Management program and has a Master of Fine Arts in producing from the CalArts. He and his husband Justin live in Whitefish Bay and have been host parents to AFS Exchange Students from Norway and Germany.

MILWAUKEE REPERTORY THEATER STAFF

Mark Clements
ARTISTIC DIRECTOR

Chad Bauman
EXECUTIVE DIRECTOR

ADMINISTRATION

Managing Director.....Melissa Vartanian-Mikaelian
General Manager.....Jennifer Smith
HR Manager.....Emily Hill
Company Manager.....Josh Segal
Executive Assistant.....Kelli Lopina
Management Assistant.....Amaris Bates
Receptionists.....Michael Evans,
Claudine Jackson, Campbell Martinez,
Mary Muehleisen, Andrea Roades-Bruss,
Amelia Strahan

ARTISTIC

Associate Artistic Director.....May Adrales
Artistic Producer.....Laura Braza
Director of Artistic Personnel.....Frank Honts
Literary Manager.....Deanie Vallone
Manager of Artistic Training.....Lina Chambers
Artistic Administrator.....Dylan K. Sladky

ASSOCIATE ARTISTS

Ayad Akhtar (Playwright), Lee E. Ernst (Actor), Laura Gordon (Actor/Director), Angela Iannone (Actor), Todd Edward Ivins (Scenic and Costume Designer), Dan Kazemi (Composer/Musician), Marc Kudisch (Actor), Reese Madigan (Actor), Jeff Nellis (Lighting Designer), James Pickering (Actor), Aaron Posner (Director), Todd Rosenthal (Scenic Designer), Eric Simonson (Director/Playwright), Lindsay Smiling (Actor), Deborah Staples (Actor), Nathaniel Stampley (Actor), John Tanner (Composer/Musician)

COMMUNITY ENGAGEMENT

Director of Community Engagement.....Leah Harris
Manager of Community Engagement.....Erick Ledesma
Public Allies AmeriCorps Apprentice.....Yeyliz Martinez

DEVELOPMENT

Chief Development Officer.....Chuck Rozewicz
Director of Development.....Amy Dorman
Major Gifts Officer.....Alli Engelsma-Mosser
Associate Director of Development,
Events & Stewardship.....Morgen Clarey
Associate Director of Development,
Institutional Giving.....Cassidy Skorija
Development Database Manager.....Stephan Thomas

EDUCATION

Director of Education.....Jenny Toutant
Education Manager.....Jeffrey Mosser
Education Administrator.....Auburn Matson
Schools Program Coordinator.....Joshua Pohja
Education Resident.....Denzel Taylor

Teaching Artists.....Amira Adams, Danielle Adisi,
Thomas Adisi, Maura Atwood,
Leatanya Dunn, Allen Edge,
Tessa Goulías, Luther Hall,
Kate Henderson, Van Johnson III,
Ashley Jordan, Morgan Jo Karl,
Josh Krause, Becca Marten,
Ken Miller, Malaina Moore,
Hope Parow, Abbey Pitchford,
Brandi Reed, Tony Roman

FINANCE

Chief Financial Officer.....Mark Wyss
Senior Accountant.....Derrick Dickinson
Accounting Associate.....James Kaplan
Accounting Associate.....Cristina Hughes

MAINTENANCE

Chief Building Engineer.....Rob Liningor
Engineers.....Todd Ross, Maurice Goodwin
Part-Time Engineers.....Yuselff Dismukes,
Ray Herrera, A.J. King



Keep up with what's happening
in the arts and get special offers!

Footlights is where you are - like us on Facebook

MILWAUKEE REPERTORY THEATER BOARD OF TRUSTEES

President
Gregory C. Oberland

Vice President, Development
Gina Peter

Vice President, Trustees and President-Elect
Catherine Robinson

Secretary
Bladen Burns

Treasurer
James Phillips

At Large
Warren Buliox

At Large
Judy Hansen

At Large
Robert H. Manegold

At Large
Linda Marcus

TRUSTEES

Ayad Akhtar
Matt Bartel
Ivor Benjamin
Wendy W. Blumenthal
Melanie Booth
Michael Carter
Jane Chernof
Marybeth Cottrill
Amy Croen
Robert H. Duffy
Molly Kubly Fritz
Andres Gonzalez
William Guc
John Halechko
Bryan House
John Hunzinger, P.E.
Tom Irgens
Lynda Johnson
Bradley J. Kalscheur
David Kundert
Phoebe Lewis
Joan Lubar
Kristine Lueders
Mark Niedfeldt, M.D.
Adam Peck
James Phelps
Joe Pickart
Karen Plunkett
Caran Quadracci
Christopher Rowland
Craig Swan
Deborah Tomczyk
Nicholas Wahl

FRIENDS OF MILWAUKEE REP BOARD

President
Steph O'Connor

Immediate Past President
Aileen Smith

VP External Affairs
Melita Biese

VP Fundraising
Terry Sutter

VP Internal Services
Susan Herro

Secretary
Erin Burgess

Treasurer
Jim Mergener

Members

Terry Bell
Cathy Jakicic
Jaclyn Jecha
Janet Kaldhusdal
Drew Martin
Emily McKeown
Vic Passante
Suzanne Powell
Craig Warnecke
Karen Weinberg
Les Wilson

SUSTAINING TRUSTEES

These former Milwaukee Rep Trustees continue their engagement through performance attendance, a minimum annual contribution of \$250, and/or potential membership in the Limelight Legacy Society.

Richard Abdo	Anne Gimbel	Dwight L. Morgan
Joaquin Altoro	Kathleen Gray	Abigail J. Nash
Sara Aster	Edward T. Hashek	Tonen (Sara) O'Connor
Jay Baker	Jill Heavenrich	Anthony Petullo
Katharine Banzhaf	Jacqueline Herd-Barber	Gwen Plunkett
James E. Braza	Peter Hotz	Elizabeth Quadracci-Harned
Joyce G. Broan	Janet Hume	Kristine Rappé
John Crichton	Stephen Isaacson	Dr. John E. Ridley
Danny Cunningham	Judy Jorgensen	Allen N. Rieselbach
Karen Dean	J. Patrick Keyes	Joseph A. Rock
Mark J. Diliberti	John Kordsmeier	Darlene Rose
George A. Dionisopoulos	Frank Krejci	Micky Sadoff
Robert Dye	Arthur J. Laskin	Joseph Schlidt
Norman Dyer	James LaVelle	James Schloemer
Stephen Einhorn	David J. Lubar	Thomas Scrivner
James D. Ericson	Marianne Lubar	Edward Seaberg
Susan Esslinger	Susan Lueger	Brenda Skelton
Robert Feitler	Audrey A. Mann	Patrick Smith
David Fleck	Vince Martin	Robert Taylor
Timothy C. Frautschi	Patti Brash McKeithan	Renee Tyson
Ann Gallagher	Venora McKinney	Stephen VanderBloemen
Patrick Gallagher	Sandra McSweeney	W. Kent Velde
Connie Gavin	Richard Meeusen	Karin Werner
Katherine M. Gehl	Donna Meyer	Stacy Williams
Cecilia Gilbert	Douglas Mickelson	Andrew Ziegler

PRESIDENTS' COUNCIL

James Braza	John L. Kordsmeier	Patricia Brash McKeithan
Joyce Broan	Frank Krejci	Donna Meyer
Judy Hansen	Susan A. Lueger	Gregory C. Oberland
Jacqueline Herd-Barber	Robert H. Manegold	Edward Seaberg
Larry Jost	Vincent L. Martin	W. Kent Velde

LIMELIGHT LEGACY SOCIETY MEMBERS

The Limelight Legacy Society is a group of visionary donors who support Milwaukee Rep through a planned gift.

New members as of May 1, 2019 are in bold.

If you want to learn more about membership opportunities and benefits, please contact Allie Engelsma-Mosser at 414-290-5366 or Aengelsma-mosser@milwaukeekeerep.com.

George R. Affeldt, Jr.	James and Ellen Flesch	Vivian Moller
Sharee Allain and David Schertz	Deborah Fugenschuh and Mark Hinchey	Bob and Jan Montgomery
Gerald and Gail Baccetti	Bill and Susanne Gay	Charles and Barbara Murphy
Bob Balderson	Jeff Glock and Jane Reilly	Greg and Rhonda Oberland
John and Carol Bannen	Sara L. Grotenrath and James Pech	Karen Ellen Owens
Katharine Banzhaf	Delphine Gurzynski	Marlyene Pfeiffer
Brian and Rebekah Barsch	Richard and Susan Hackl	Gwen Plunkett
Adam and Megan Bauman	Sybil Hamilton	Ronald and Barbara Poe
Chad Bauman and Justin Dunleavy	Arlene Hansen	Milan Racic
Mark and Victoria Benskin	Judy Hansen	David and Pat Riersen
Mark Biehl	Leland Hansen	Sara Risley
Ralph Bielenberg	Edward Hashek and John Jors	Gayle Rosemann and Paul McElwee
Melita Biese	Dr. Lawrence Howards	Ed Seaberg and Patrick Smith
Joyce G. Broan	Janet Kellogg Hume	Roger and Margery Senn
Mark E. Carstensen and Mary M. Horton	Cathy Jakicic	Brenda Skelton and Jim Bendtsen
Jane and Stephen Chernof	Deb and Peter Johnson	Aileen M. Smith
Mark Clements and Kelley Faulkner	Bradley J. Kalscheur	Terry R. Sutter
Chris and Judi Collins	Richard and Diane Kane	John and Kine Torinus
Diane Dalton	Margaret Knitter	Harry and Mary Beth Van Groll
Randall Daut and Patricia Ryan	Christine Krause	Judy Van Till
Susan and Bill Dawicke	David and Camille Kundert	Paul Vandeveld
Robert and Karen Dean	Sandra L. Laedtke	Kent and Marcia Velde
Carol Z. Dolphin	James and Mary LaVelle	Greg and Jodi Wait
Rosemarie Eierman	Mr. and Mrs. Llewellyn E. Licht	David and Cheryl Walker
Roma Eiseman	Robert and Susan Lueger	Barbara Wesener
Don Ellingsen	Carol and Rob Manegold	Stacy and Blair Williams
Susan and Gee Esslinger	Jim and Sally Mergener	Paul and Sandy Wysocki
David and Janet Fleck	Anthony and Donna Meyer	

BEING A DONOR HAS ITS PERKS!



Donors to Milwaukee Rep get even more benefits than just warm fuzzy feelings. When you give beyond your ticket purchase or Subscription, you receive exclusive insider opportunities based on your total giving over the past 14 months.

\$25

Receive our donor newsletter **Drama Ink** and be the first to know what's happening at Milwaukee Rep.

\$100

Experience a **Backstage Tour** of all three theater spaces and production shops.

\$250

Listen to a presentation by a Rep artist from our production shops.

\$500

Attend a portion of a working technical rehearsal and learn the secrets behind the magic.

\$1,000

Join our **Play Reading Club** and discuss an upcoming production with Artistic Staff.

\$1,500

Sit in on the first read-through of an upcoming **Quadracci Powerhouse** production.

Additionally, you receive all of the benefits of the prior levels. Gifts can be made with your ticket purchase, online, or through our monthly giving program **Reprise**.

**MILWAUKEE
REP**

For more ways to give and a full list of donor benefits, go online at

www.MilwaukeeRep.com

2019/20 DONORS

The following list represents organizations and individuals who have made a cumulative contribution of \$250 or more to the Annual Fund, Curtain Call Ball Paddle Appeal and Corporate Sponsorships, Created in Milwaukee Campaign, and Stackner Campaign between **November 28, 2018 – January 28, 2020**. For a complete list of all our supporters, please visit www.MilwaukeeRep.com.

Corporation, Foundation and Government Giving

\$1 million +

United Performing Arts Fund (UPAF)

\$100,000 – \$999,999

The Lynde and Harry Bradley Foundation
Herzfeld Foundation
Shubert Foundation

\$50,000 – \$99,999

CAMPAC
Four-Four Foundation
Greater Milwaukee Foundation
Northwestern Mutual
Rockwell Automation
We Energies Foundation
Wells Fargo

\$25,000 – \$49,999

Bader Philanthropies
Patty and Jay Baker Foundation
BMO
Demmer Charitable Trust
Friends of Milwaukee Repertory Theater
Harley-Davidson Foundation
Husch Blackwell
Johnson Controls
Milwaukee Public Schools
National Endowment for the Arts

\$10,000 – \$24,999

Associated Bank
Baird
Deloitte
Einhorn Family Foundation
Fiduciary Management
Foley & Lardner
Godfrey & Kahn S.C.
William N. and Janice V. Godfrey Family Foundation
Frieda & William Hunt Memorial Trust
Kohl's
KPMG
The Charles E. Kubly Foundation
ManpowerGroup
The Marcus Corporation
PNC
Potawatomi Hotel & Casino
Quarles & Brady
Reinhart Boerner Van Deuren S.C.
Studio Gear
West Bend Mutual Insurance
Wisconsin Arts Board

\$1,000 – \$9,999

ANON Charitable Trust
Burke Properties
CG Schmidt, Inc.
Chase Family Foundation

Cream City Foundation
Eppstein Uhen Architects
Ernst & Young, LLP
Ralph Evinrude Foundation
Froedtert Health
The Gardner Foundation
GRAEF
Evan and Marion Helfaer Foundation
Dorothy Inbusch Foundation
Camille A. Lonstorf Trust
Mandel Group
Marquette Associates, Inc.
Michael Best
Milwaukee Arts Board
Charles D. Ortgiesen Foundation
Jane Bradley Pettit Foundation
Phoenix Investors
PricewaterhouseCoopers
Rexnord
Spano Pratt Executive Search
Spear Arts Education Fund
Townsend Foundation
The VanderBloemen Group LLC

\$500-\$999

The Brookby Foundation
Greater Milwaukee Association of Realtors Youth
Foundation
RSM US LLP

\$250 – \$499

Actors' Equity Foundation, Inc.
Urich Lock Co

Participants in the Matching Gift Program

AmazonSmile
American Family Insurance Dreams Foundation
American Transmission Company LLC
Eaton Corporation
ExxonMobil Foundation
GE Foundation
Great-West Financial
Greater Milwaukee Foundation
Bucyrus Foundation, Inc.
IBM Corporation
Illinois Tool Works Inc.
Johnson Controls Foundation
JPMorgan Chase Foundation
KPMG
Pfizer Foundation Matching Gifts Program
Reader's Digest Foundation
Rockwell International Corp. Trust Matching Gift
Program
Target
Verizon Foundation
We Energies Foundation
Wells Fargo

Milwaukee Rep welcomes gifts of securities and stocks. If you plan to make such a gift, please notify the Development Department at 414-290-0717 so we can properly credit and acknowledge your generosity.

Individual Giving

Luminary (\$100,000+)

Anonymous
Billie Kubly
Joel and Caran Quadracci

Visionary (\$50,000-\$99,999)

Bladen and Julia Burns
Four-Four Foundation
David and Camille Kundert
Lubar Family Foundation
Marianne and Sheldon Lubar
Madeleine and David Lubar
Susan Lubar Solvang
Joan Lubar and John Crouch
Plunkett Family Foundation
Ed Seaberg and Patrick Smith
Craig and Mara Swan
Julia and David Uihlein

Artistic Producer (\$25,000-\$49,999)

Anonymous (3)
Melanie and Steve Booth
Christopher Harned and Elizabeth
Quadracci-Harned
Ted and Mary Kellner
Kristine and Wayne Lueders
Greg and Rhonda Oberland
Adam and Laura Peck
Gina and Eric Peter
Christine Synchronch and Jim McNulty

Producer (\$10,000-\$24,999)

Anonymous (3)
Gretta Assaly
Michael Barber and Jacqueline Herd-Barber
Richard and Jo Ann Beightol
Mark and Karen Bitzan
Bill and Priscilla Boelter
Robert C. Burrell
Croen Foundation, Inc.
Thomas J. and Deborah W. Degnan
Margaret Dethloff and Terri Zeh
Tom and Molly Duffey
Suzy B. Ettinger Foundation
The Molly and David Fritz Family
Peter and Beth Gottsacker
Greater Milwaukee Foundation
Anthony and Andrea Bryant Family Fund
Donna and Tony Meyer Fund
Bill and Sandy Haack
John J. Halechko and Marc Colletti
Judy Hansen
Christy and Aaron Jagdfeld
Keyes Family
Ruth DeYoung Kohler
Connie and John Kordsmeier
Phoebe Lewis
Linda and Greg Marcus
John and Linda Mellowes
Jim Phillips
Bill and Linda Priebe
Tom and Susan Quadracci
Milan Racic
Catherine and Buddy Robinson
Gayle Rosemann and Paul McElwee
Kathleen H. Seidel
David and Cheryl Walker
Teddy and Karin Werner
Stacy and Blair Williams
Carlene and Andrew Ziegler

Director (\$5,000-\$9,999)

Anonymous (2)
Fran and Lowell Adams
Adlon Partnership
Richard and Sara Aster
Isabel Bader
Bob Balderson
Kellen and Matt Bartel
Donna and Donald Baumgartner
Ivor and Carol Benjamin
Wendy and Warren Blumenthal
James E. and Mary K. Braza

Randal and Mary Lynn Brotherhood
Elaine Burke
Timothy and Kathleen Carr
Chris and Judi Collins
Nancy Desjardins
Bob and Teri Duffy
Dr. Eric A. Durant
Don Fraker and Maja Jurisic
Rob Gardenier and Lori Morse
Andres Gonzalez
Greater Milwaukee Foundation
Norman and Lucy Cohn Family Fund
Susan and Howard Hopwood Fund
Judith A. Keyes Family Fund
Clark and Lauri Green
John and Susan Harrits
Carla H. Hay
Katie Heil
Peter and Linda Hotz
Bryan and Rebecca House
John and Marci Hunzinger
Stephen and Roberta Isaacson
Jewish Community Foundation
Stephen and Jane Chernof
Donor Advised Fund
Micaela Levine and Tom St.
John Donor Advised Fund
Lynda Johnson
Judy and Gary Jorgensen
Mark and Jenny Kopetsky
David and Jean Lauer
Robert and Susan Lueger
Kevin and Roseann Lyons Charitable Fund
Dawne and Ray Manista
Vince and Jan Martin
Merle and Sandra McDonald
Patti McKeithan
Vivian Moller
Dwight and Marleen Morgan
Abigail and David Nash
Drs. Mark and Jennifer Niedfeldt
Dr. David Paris
Joe and Katie Picart
Allen and Pat Rieselbach
Chris Rowland
Curtis and Deborah Tomczyk
Harry and Mary Beth Van Groll
Nic and Sally Wahl

Designer (\$2,500-\$4,999)

Anonymous (2)
Helen Ambuel
Robert and Peggy Arfman
Amy Argall
Gary and Connie Bakker
Katharine Banzhaf
Richard and Diana Barthel
Chad Bauman and Justin Dunleavy
Jackie Behnke
Ginny Bolger
Warren Buliox
Mark Clements and Kelley Faulkner
Guy and Kathy Crane
Curt and Sue Culver
Sue D'Alessio
Jeff Drope and Victoria Teerlink
Bob and Teri Duffy
James and Ellen Flesch
Patrick D. Gallagher
Franklyn and M. Anne Gimbel
Rich Grunke and Bill Grash
Leland Hansen
Thomas Harty and Sharon Safford Harty
Henry and Margery Howard
Kuznetsov and Janet Howenstine
Suzanne and Michael Hupy
Steve and Karen Huser
Jewish Community Foundation
Dr. Burton E. Goodman and
Harriet Bocksbaum
Mike and Marie Johnson
Maureen Kania Swokowski
Kristine Kile

John and Bronwen Knappenberger
Tim Kraetsch and Mike Wavra
Christine Krause
Kristine Krause and Scott Patulski
Marina and Frank Krejci
Terri and Dave May
Daniel J. and Constance P. McCarty
Robert and Susan Mikulay
Bob and Jan Montgomery
Anthony Petullo Foundation
James and Morgan Phelps
Fred Pike and Cecilia Taylor
Alan and Carol Pohl
Paul and Patricia Purcell
Susan B. Purtell
David and Pat Rierson
Paul and Lynn Rix
Richard and Karen Rodgers
Micky and Ron Sadoff
Jay and Anne Schamberg
Patrick W. Schmidt and Dewey J. Caton
Meredith and Thomas Scrivner
Sue and Bud Selig
John and Kristin Sheehan
Clark and Diane Slipher
Dr. Mark and Nancy Smuckler
Jud Snyder and Amy Stillman
Nita Soref
Laura Strain
Fred Stratton
Mike and Peg Uihlein
Judy Van Till
Kent and Marcia Velde
Connie Wilson and Mike Krueger
Raymond and Kelly Wilson
Wilfred Wollner
Joe and Mary Ann Zompa

Playwright (\$1,500-\$2,499)

Sharee Allain and David Schertz
Bob Barthel
Mark Biehl
William and Barbara Boles
Larry Bonney
Robert and Sharon Brenner
Bruce and Marsha Camitta
James Cauley and Brenda Andrews
Thomas and Gisela Chelmsky
Jim and Marybeth Cottrell
Antony and Nikki D'Cruz
Russell and Sandra Dagon
Sandy and George Dionisopoulos
Thomas and Mary Dorn
Tom Dorner and Sylvia Pratt
Jan Effinger
Dale and Mary Erickson
Jim Ericson
Rick and Karen Esenberg
Susan and Gee Esslinger
Jeff and Kelly Fitzsimmons
Peter Foote and Robin Wilson
Jane M. Foster
Rick and Liz Gebhardt
Mr. Stephen and Dr. Valerie Gigot
Greater Milwaukee Foundation
Joan and Peter W. Bruce Fund
Margaret Heminway Wells Fund
JB Fund
Schoonenberg Family Foundation Fund
Delphine Gurzynski
Paul and Gloria Halverson
Dave and Judy Hecker
Kathleen Gray and Ron Hofer
Tom Irgens and Christine Culver
Stephen and Roberta Isaacson
A. W. Janikowsky
Jewish Community Foundation
Pam Kriger Donor Advised Fund
Deb and Peter Johnson
Don and Barb Koehler
Lilane Koehn Mace
Paul and Amy Kolo
Robert and Gail Korb

2019/20 DONORS

Bruce Kruger and Margaret Herrick
Sandy Laedtke
Kaye and Prakash Laud
Perry Lieuallen and Darcy McManus
Steven Liszewski
Richard and Roberta London
Jeannie Mantz
Dr. Brent and Susan Martin
Debesh and Linda Mazumdar
Tom and Renee McCutcheon
Julie and David Meier
Jim and Sally Mergener
Claudia and Joseph Moll
The Mosher Family Foundation
David Mullins and Steph O'Connor
Chris and Ninveh Neuman
Joseph R. Parbst Charitable Fund
Don Petersen and Corintha Van Orsdel
Earl Potter and Lari Williams
Jim and Lys Reiskyl
David and Roberta Remstad
Susan Riedel
Cornelia and John Riedl
Jim and Andrea Schloemer
Richard and Mary Schnell
Howard Schoenfeld
Marty and Elaine Schreiber
Paul and Christy Schwan
Aileen M. Smith
James and Elaine Sweet
Susan and Jim Taylor
Gile and Linda Tojek
Elizabeth Vaeth
Christine M. and Stephen C. VanderBloemen
Waukesha Community Foundation
Thomas X. Herro Memorial Fund
Neal and Cathy Wegner
Dr. and Mrs. Paul Weisman
Eric and Sarah Whyte

Stage Manager (\$1,000-\$1,499)

Matteo Alioto
Anonymous (4)
Jim and Terri Alioto
Tom and Kathy Alpren
Joaquin Altoro and Claudia Villarreal
Astor Street Foundation
Carla and Burt Bartlett
Cristin and Jonathan Bock
Bradley Impact Fund
Jason and Diep Graham Charitable Fund
Bradley and Glenna Brin
Cheri and Tom Briscoe
Frank and Caryl Briscoe
Kathleen Cepelka
Susan Cerletty
B. Lauren and Margaret Charous
Thomas and Mary Belle Chatton
Steve and Nancy Check
Beverly Colton
Dave and Jan Cronin
Matt Cudney
Robert and Karen Dean
Lloyd Dickinson and Kristin Bergstrom
Amy and Mark Diliberti
Mary Paula Dix
Carol Z. Dolphin
The Duback Family Charitable Fund
Michael and Janet Durham
Stewart Edwards and Joanne Danforth
Richard and Patricia Ehler
Evelyn Ericson
Feitler Family Fund
Robert and Kristin Fewel
Mary Lou M. Findley
Thomas Fladeland
Thomas and Marcia Flanagan
Chris and Rory Foley
Kari and Bill Foote
Bill and Susanne Gay
Jack Gebhardt and Deborah
McKeithan-Gebhardt
Jon and Nancy Gilmore
Adam and Carole Glass
Frank and Renee Gonzales

Greater Milwaukee Foundation
Donald and Barbara Abert Fund
Bechtold Family Fund
Bernadine and Stephen Graff Fund
Hepburn "Bootstrap" Foundation
Journal Foundation
Thomas and Mary Grossman
Carmen Haberman
Glen and Claire Hackmann
Edward Hashek and John Jors
Jill Heavenrich
Ralph and Bonnie Hensel
David and Darcy Hinz
Pam Hoover
Jewish Community Foundation
Mark and Cheryl Brickman
Donor Advised Fund
Dorene and Phil Paley Donor Advised Fund
Dr. Jack and Myrna Kaufman
Brian and Mary Lou Kennedy
Vincent and Cathy Kotnik
Anthony and Susan Krausen
Nancy and Arthur Laskin
Graham Lewis
Dr. Paul Loewenstein and Jody
Kaufman Loewenstein
Thomas Mackenzie
Anne and Tom Metcalfe
Pamela Meyer
Judith Miller
Lynn Minella
Don and Renee Mondano
John and Jane Niebler
Chris and Anne Noyes
Sarah Oberhofer
John O'Hare
Kathy and Alan Olsen
David Olson and Claire Fritzsche
Larry and Teri Pavelec
Bruce and Candy Pindyck
Carol Porth
Jonas and Sylvia Prising
Edwin and Beverly Puzia
Jim and Kris Rappé
Brian and Amber Regan
Joseph A. and Sarah Rock
Wayne and Christine Sage
James Sanger and Mary Newton
Pat Schlick
Richard and Jean Schmalfeld
Judy and Tom Schmid
Bob and Carol Schmidt
James and Kathi Scholler
Thomas and Lori Schuster
Linda L. Sell, MD
Dennis Sheahan
Scott and Dulcie Shoener
William and Sarah Slaughter
Dianne Spector
A.J. Star
Judith A. Steinke
Robert Storm and Catherine Shaw
Kathy Thornton-Bias
Diane Kippenhan-Vollmer and James Vollmer
Jeff and Jodi Wait
Paul Wanat
Rolf and Karen Wegenke
Alan and Kathy Werth
Susan Wiegner
Jay and Laura Wigdale
Prati and Norm Wojtal
Gertrude Zauner

Principal Actor (\$500-\$999)

Anonymous (12)
Richard and Joan Abdo
Mike and Tia Abuls
Mary and John Almasi
Dorothy Anderson
Keith and Paula Anderson
Richard and Amy Balge
George Banda
Martha Barry
Brian and Rebekah Barsch
Mike and Ellen Bartel

Doris Bauer
Jack and Virginia Beatty
Nina Beck
Phil and Liz Behling
Monica Beitzel
Terry Bell
Suzan Ben-Poorat
Gerald and Sydel Bergtrom
Bill and Betsie Berrien
Arthur and Carolee Beutler
Big Art
Greg Bird
John Bjork, MD and Colleen Cornelius
Bob Blitzke and Jane Grogan
James Boerner
Troy Bretl
D'Araun Brown
James Brown and Ann Brophy
Chris Burgener and Linda Loke
Bruce and Joan Butterfield
Daniel and Allison Byrne
Phil and Anne Callen
Trish Calvy
Bruce and Kathi Campbell
Carolyn Campion
José Carlino
Brian Casey
Sally Castle
Mark and Terri Chelmoski
Jay and Roxanne Ciatti
Adam and Jennifer Ciralysky
Kelly and Kathryn Clark
Patricia and Secily Clason
Bunny and Ron Cohen
Mary and James M. Connelly
Rev. David E. Cooper
Danny and Jolinda Cunningham
Mark and Julie Darnieder
Jeff Davis and Rachel Schneider
Susan Dawicke
Jane Dennis
John and Jean Donovan
Walter Dragan and Gloria Smiley
Bette Drought
Marie Dupuis and Peter Westergard
Mike and Kathy Dwyer
Sally Edgett
Emily Erthum
Bryan and Lyn Eskra
Nathan and Susan Fair
Gary Fait
Christine L. Fenner
Kenneth Finkel and Jane Delzer
David and Janet Fleck
William and Joy Franson
Tim and Sue Frautschi
Allan F. and Mary Ellen Froehlich
Stephen and Gail Froehlich
Richard S. and Ann L. Gallagher
Ralph and Paula Garcia
Rod and Linda Gehrig
Drs. Mark and Virginia Gennis
Burzoe and Nancy Ghandhi
Cecilia Gilbert
Jeff Glock and Jane Reilly
Larry and Geli Golopol
Michael Goodspeed and Gail Waring
Dale and Mary Graves
Paul and Christine Grebe
Honorable Michael and Barbara Guolee
Steve and Karen Guy
Charles and Elizabeth Haas
Amy Harker-Murray
Dale and Sara Harmelink
Jim and Marge Hartwig
John Haydon and Grace McBain-Haydon
John Healy and Mary L. Tobin
Thomas and Catherine Heinen
Laurie and Keith Hickman
Hugh and Robin Hoffman
Mary Beth Holloway
Andrew and Paula Holman
Gary Holmes and Susan Holding
Kevin and Debra Hood
Hal Horneffer

2019/20 DONORS

Megann Hubbard
Janet and Bill Hume
Sandra A. Ivers
Roy H. Jablonka
Valerie Jablonka
Jason and Hannah Jahn
Donald Jarchow
Jewish Community Foundation
Eileen and Howard Dubner
Donor Advised Fund
Joan and Michael Friedman
Donor Advised Fund
Lois Malawsky Donor Advised Fund
Sherwood E. and Libby S. Temkin
Donor Advised Fund
Dan and Pat Johansen
Bryon and Gwen Johnson
Greg and Jackie Johnson
Eric and Stacy Jossart
John Jump
Marlene Kagen
Chuck Kahn and Patti Keating Kahn
Evan and Paula Kaiser
Wendy Kamerling
Richard and Diane Kane
Debra Katz
Judith Katz
Allan Kauth
Raymond and Susan Kehm
Michael and Christy Kellman
Sang and Jiyoon Kim
John and Debbie Kissinger
Klassen Remodeling
Glenn Kleiman and Gisela Turner
Robert and Naomi Knoll
Kurt and Jean Kozma
John and Susan Krezoski
Stanley Kritzik
Henry Krokosky and Char Schall-Krokosky
Harvey Kurtz and Yvonne Larme
Janet LaBrie
Tom and Sally Ladky
Dan and Kathy Larsen
Eric Larson and Susan Lewis
William and Judith Laste
Larry and Mary LeBlanc
Lloyd and Sheri Levin
David and Mary Ann Lillich
Dawn Lindsey
Franklin Loo and Sally Long
Robert and Mary Loots
Peter Lovance
Paul and Patty Lucca
David Lundin and Agnes Lun
Jack Haensel and Stephanie Lyons
James and Ann Maher
John and Audrey Makowski
Brian and Susan Manthey
Lee Marquardt
Andy and Janet Martin
Mateo Family Trust
Maureen and Michael McCabe
Bernard and Susan McCartan
Katherine McCombe
Dan and Jill McElroy
Jere McGaffey
Barbara McMath
Daryl and Rita Melzer
Steve and Ann Merkow
Charles Mesec
Jill Meyers
Howard and Sara Miller
Gregory and Susan Milleville
Robert and Jane Mitchell
Mark Molot and Jequitta Kain Molot
William and Patricia Moren
Robin Mosleth
Bernie Mrazik and Jeanie Jerde
Barbara and Charles Murphy
Jerry and Lori Murphy
Jim and Mary Fran Murray
Jim and Betty Jo Nelsen
Sue Nelsen
The Nelson-Zirzow Fund
David and Jaclyn Ness

Joel and Donna Nettesheim
Jerry Niemiec
Paul and Kathrine Noran
Chandra and Chris Novoa
Marcia M. Olen
Dr. Thomas and Elaine Pagedas
Frank and Joanne Paulus
John and Carol Pauly
Matthew Perta
Kristine Phillips
Melanie and Frank Popa
Ronald and Anne Putzer
Dr. Thomas Raimann and Mick Dwyer
Toby Recht
Suzann Reichley
Robert and Pamela Reily
Dr. John and Theresa Ridley
Roger Ritzow
Daniel and Anna Robbins
Curt and Patty Robinson
Mary Roeppke
Peter and Connie Roop
Barry Rosenblatt
Mason and Julie Ross
Rhoda Runzheimer
Tom and Judy Saeger
Linda Sampson
Richard A. Sauts Jr. and Diane K. O'Connor
Eric Schluter
Dean and Diane Schmelzer
Richard and Nicole Schmidt
Don and Laura Schmitt
Dr. and Mrs. Thomas Schneider
Nancy Schneiders
George Schroeder and Mary Arenberg
Barry Schulman and Cheri Wolf-Schulman
Clyde and Marge Schweitzer
Allison Scrivner
Hallie Sebens
Leslie and Marcia Singer
Patrick and Janet Sinks
Brenda Skelton and Jim Bendtsen
Guy and Nancy Smith
Katherine Smith
John and Mary Splude
Lorand and Cindy Spyers-Duran
Charles and Jennifer Stearns
John Stern
Gillian Stewart
Michael and Linda Stolz
Bill and Judith Stone
Gregory Strowig
Loring M. Talsky
Thomas and Patricia Towers
Renee and Joseph Tyson
Deanna Uradnicek
Nicki Usinger
Sheryl Van Haren
Brendan Vierk
Greg and Carla Von Roenn
Jack and Margaret Ward
Robert and Kathleen Warner
Sargit Warriner
Ruth Way
Mary M. Wegener
Sue Wells
Jim and Libby Wigdale
Richard and Margaret Winz
Gene and Carmen Witt
Lee Wolcott
Robert L. Woodbury
Pete and Penny Woodcock
Ross and Sandy Workman
Scott and Jean Wrobbel
Lori Wucherer
Mike and Nancy Yttre
Mark and Evonne Zalewski
Paul and Katherine Zavada
Eve Joan Zucker

Supporting Actor (\$250-\$499)
Anonymous (20)
7Summits LLC
Marlene Adland
Eugenia Afinoguenova

Val and Bonne Anderson
Daniel Andrus
Barbara Armstrong
Jeff Arp
Robert W. Ater and Gregory W. Baer
John and Jenny Augustine
James and Kathleen Awe
Peter Balzer
Cheryl Banks
John and Carol Bannen
Elisabeth Banner
Paul and Elizabeth Bargren
Barbara Baron
Jim and Nora Barry
Donna Bartolone
James and Sharol Bassett
Tom and Sally Basting
Jane Batten
Doris Bauer
Thomas Bauldry and Thomas Czinysy
Charles Baumgardner and Susan Jans
Kevin Baumgart
Melissa and James Baxter
Paul and Lianne Becht
Donald Becker
Michael and Rita Becker
Natalie Beckwith
David Beyer
Ralph Bielenberg
Geoffrey and Karen Bilda
Clyde Bingman
David and Eva Bishop
Marsi Black
Barry Blackwell and Kathleen Eilers
Carol Block
Richard Blomquist
David and Sherry Blumberg
Edward and Amy Blumenthal
Mike and Mary Bohren
Raymond Booth
Darold and Corrie Borree
Paul Bosanac
Scott and Sandy Botcher
John and Sandra Braun
Liz and Larry Brewer
Rick and Mardi Bridich
Dan Brinzac
Andy and Lisa Bro
Carla Brockman
Carol Brown
Tom and Joanne Brown
Mr. and Mrs. Peter Buening
Building Waters Inc.
Jack and Carrie Buri
Mary Burke
Shannon and Jennifer Burns
Susan Burns
Peter and Laurie Byrne
Lewis Charles Cadkin and Susan
Elizabeth Cadkin Living Trust
John and Kathleen Cantieri
Kim and Judy Casper
Richard and Katherine Cattey
Gregory Chandler
Ron Chandler and Cynthia Herrera
Mary Cherwezniak
Darlene Chiappetta
John and Marilyn Christiansen
Marcia Christianson
Joseph and Julie Chusid
James and Martha Clark
A.L. and Mary Ann Cleek
Lana and Rick Colbo
Jeffrey Coleman
Samuel and Sandra Colon
Rochelle Connor
Carol Coppersmith
Marilyn Corlew
Donald and Suzanne Cornell
Constance Crooks
Mark and Julie Darnieder
Barbara Davis
Diana Davis
Larry and Eileen Dean
Tom DeChant

2019/20 DONORS

Laura DeGoller
Shane and Keri Delsman
Kurt Deprey and Michael Murray
Christina Diaz
Gabriela Dieguez and Francisco Enriquez
Mary and Todd Dillmann
Roger and Regina Dirksen
Dennis Dirx
Nina Dmitrieva
Candance Doerr-Stevens
Doug Doers
Kim and Ted Doheny
Bridget Donahue
Kathie and Bob Dye
Mary and Norm Dyer
Linda Edmondson
Mark and Jennie Ehrmann
Tina Eickermann
Rosemarie Eierman
Eugene and Jean Eisman
Ramona Elmer
Dr. Dennis and Cecile Engel
Christina Englund
Paul and Karen Erickson
Suzanne Ettl
Tom and Peggy Fahl
Lisa Feldmeier
Jeannie and Noah Fenceroy
Dr. Michael and Terry Fetherston
Alexis Fielek
Michael Fielek
Rena and Christopher Flowers
Eric and Bridget Fonstad
Bruce and Kathy Ford
James and DeDe Forester
Helen Forster
Kimberlee Foster
Janet and Stanley Fox
Natalie Frankel
John and Jane Frederick
Gerald and Patricia Freitag
Thomas and Deborah Gannon
Katherine M. Gehl
Tracy Geimer
David and Mary Gibeau
Matthew and Nancy Gibson
Emmely Gideon
James and Sharon Gierahn
Thomas Giese
Gary and Faye Giesemann
Greater Milwaukee Foundation
Mary and Charles Kamps Fund
James and Mary LaVelle Fund
James Green
James M. Green
John and Tameica Greene
Paul Johnson and Patti Grieb
David and Dana Griffith
Barbara Griffiths
Robert and Barbara Gross
Ralph Gugerty
Bruce Gunderson
Carol Gustafson
Tom and Annette Heileman
Dan and Sue Haislmaier
Deirdre and Tom Halat
Colin Halfwassen
Sybille Hamilton
Arlene Hansen
Dr. James and Mary Ann Hanson
Rebecca Harms
Cliff and Susan Hartmann
Helen Hawke
Tim Hawks and Mary McCormick
Naomi Hawthorne
Karen Hebert
Joslyn Hegelmeyer
Hilda Heglund
Richard and Jean Herman
Drs. Daniel and Nancy Herrell
Jerold Hershberger
Earl and Eugenie Hildebrandt
Alan and Jean Hilgeman
Dante and Jennifer Houston
Neil and Monica Houtler

Chris Hutchinson and Laura DeLain
William and Karen Irwin
Michael Isaacson
Edward and Barbara Jacob
Dr. Peter H. and Jean Jacobsohn
Jewish Community Foundation
Bill and Idy Goodman Family
Donor Advised Fund
Avrum and Dannette Lank
Donor Advised Fund
Sherry and Norm Malmon
Donor Advised Fund
Dorothy and Merton Rotter
Donor Advised Fund
James and Angela Jodie
Marilyn A. John
Allen and Sharon Johnson
David and Mel Johnson
Mary Johnson
Renee Johnson
Roy and Kathleen Johnson
Caroline Joyce
Larry and Holly Jurs
John and Coral Kaczynski
Ruth Kallio-Mielke
Janine Kalowski
Mark and Ginny Kannenberg
Tom Karakis and Colleen Lese
Timothy and Mary Keane
Ellen Kellen
Edward F. Kelly
Marilyn Kennedy
Fredrick P. and Joan F. Kessler
Robert and Judy Kettler
Deonte Key
Jack and Audrey Keyes
Joseph Kmoch
Mary Knudten
Martin Kohler
Dennis and Carolyn Kois
Terry and Mary Krall
Lee and Bonita Kraus
John and Diane Kretsch
Sharon Kruger
Kevin Kruschke
Peter Kuenzi
Anne Kumor
Dr. James and Elizabeth Kuplic
Brenda Kuske
Catherine La Fleur
Robert Lang
Gary and Doris Langbruttig
William and Jeanne Lange
Dennis and Jeanne Larsen
Steen and Janice Larsen
Jim and Teri Larson
Jason and Kristy Lavann
Eugene and Gwen Lavin
Kathleen Layden
John and LaVonne Leonard
Gillian Lester-George and
Manuel D. Montesinos
Mark and Cindy Levy
Rita Lewenauer
John E. and Karen M. Lewis
Dr. James and Jacqueline Lichty
Nancy Lindenberg
Rose Lopez
Dennis and Theresa Lowder
Ronald Luskin
Scott and Joyce Lutzow
Ellen MacFarlane
Jack and Joan Malin
Benjamin and Ellen Mandelman
Jacqueline Servi Margis
Robert Marold and Diane Boldt
Jewel Martin
Frank and Rose Mary Matusinec
Don and Gerri Mayew
Victoria S. McCormick
Judith R. McGauran
Barbara McGinnis
Jim and Colleen Mcguigan
Thomas and Cynthia McLinn
Alan and Nancy Meier

Dean Meier and Sally Nantell
Joyce Meinicke
Douglas and Annette Mickelson
Dennis and Judith Milbrath
Jay Miller and Donna Faw
Kenneth Miller and Margaret Blodgett
Debra Moore
Mary Moritz
Christine Mortensen
Emily Mueller
Richard and Isabel Muirhead
Peggy and Bill Mulligan
David Munoz
Terry and Debbie Murphy
Jack and Lucia Murtaugh
Howard and Elaine Myers
Vern and Kay Nelson
James and Elizabeth Neubauer
Paul and Carolyn Noelke
Bob and Julie Norman
Michael Nottoli and Kerry Esser
Kenneth and Elizabeth Nowakowski
Tonen O'Connor
Ed Olson and Linda Caldwell-Olson
Jim and Claire Olson
Steve and Heide Olson
Sandra Orcholski
Dennis and Anne Oulahan
Karen E. Owens
Eric Oquist and Heather Deaton
Sandra Parish
Jason and Amy Parry
Mark and Laurie Pasch
Barry and Trish Paul
Sandra Pendell
Debby Penzkover
Joan Peterson
Mark and Julie Petri
Peter and Rosemary Petroll
Marylene Pfeiffer
Andrew and Sara Pforr
Richard Pleister
Susan Porter
Sarah Pratt, M.D.
William and Nancy Preston
Dr. Barbara Prindville
Les and Wendy Proctor
Anthony and Anne Proite
Therese Quirk
Donald and Judith Rafenstein
Stephen and Susan Ragatz
Phil and Lynell Raiche
Donald and Mary Ellen Ralfs
Patrick and Noreen Reagan
Patrick and Peggy Remfrey
Ray and Mary Rentmeester
Richard Rezek
Werner and Carol Richheimer
William and Carol Roche
Daniel Rooney
Bridget and Carolyn Roskom
Pearl and James Ross
George and Dotty Roth
Bob Rothacker and Connie Gavin
Chuck Rozewicz and Maureen Fitzgerald
Gerard and Susan Ruedinger
Peter and Mary Runde
Mark Sabin and Mary Moberg Sabin
Guadalupe Salinas
Barry and Kathy Sammons
Steven Sass
Matt and Betsy Sauer
Mark Sauter
Mike and Jan Schade
The Wilbert and Genevieve
Schauer Foundation
Steve Scheu
Paul Schmidtke
Richard Schmitt
Elliott Schnackenberg
Eleanore and Eugene Schulz
Lyman and Carol Schulz
Beverly Schwabe
Neal and Jeanne Seidler
Patrick Seraphine

2019/20 DONORS

Dr. Robert and Caryl Sewell Ronald and Judith Shapiro Emily Shipman Jason and Kristin Shuler Mark and Bonnie Siegel Sandi Siegel Joseph and Amy Silvers Kirsten Simanonok Robert and Cindy Simon David Simpson and Debbie Schmidt Gail Sklodowska Mary Ann and Craig Skold Jean Smith Mark and Minna Smith Margaret Sohm Sharon Sohner Joyce and Albert Solocheck Barbra Kohl-Spiro and Hertzl Spiro James and Kathleen Springer Carol Sroka Steven Stall and Jenny Pater-Stall Scott and Mary Ellen Stanek Jerral and Judith Stanley Alec Stapleton Jeffery and Marjorie Stearns Randel Steele and Margaret Gonzales Bonnie Steindorf Gillian Stewart George and Eileen Stone	Steven Stone and Julie Banzhaf-Stone Richard and Susan Strait The Streich Family Foundation Dave and Kathy Sturgill Geoffrey Swain Susan Sweeney William and Mary Swendson The Syburg Family Barry and Sue Szymanski Roberta Tacke Paul and Donna Tanzer Robert Taylor Phyllis Teets Tesseract Consulting Services LLC William Thiemann Dean and Kathy Thome Steven Tietz and Catherine Markwiese Lynn Tolcott Mark and Christina Toth Charles Trainer and Anne Booth Triangle Enterprises, Inc. Michele Tschopp Andrea Turke Ryan Turner Randall and Gillian Vodnik Vincent and Sarah Vogelsang Benjamin and Rachel Wagner Dan and Heidi Walker Nina Walker	Owen and Karen Walsh Roger and Maricolette Walsh Frank and Milena Walter Jessica Ward Jeff Waring Mary and Fran Wasielewski Nancy Blanchard Watts Milton and Janet Weaver Mike Weiss Robert Welch Ben and Julia Westphal Donald and Melody Weyer Caroline Wieman Julian Williams Penny Williams Tom and Marlys Williams William and Anne Wingate Zac Wolff and Sara Sackmaster Dan and Chris Woods Marjorie Yoshida Mike Yost and Lisa Scholdt James and Erika Zaiser Joan M. Zeiger Mark Zellmer Terrence and Cindy Zens Ralph Zick Sharon Ziegler H. Russell and Georgianne Zimmermann
--	--	---

IN KIND GIFTS

James and Chris Duca InSinkEratr Division of Emerson Electric Co. Kohler Co. Randall and Pamela Penn Bill and Gayle Roddick Carol Ross J. Richard and Karen Sendik Stacie Stark	Richard Sternkopf and Kathleen Barry John and Megan Susko Nancy Weiss-McQuide Julia Whitcomb Judy Wick Barbara Wrolstad Daniel and Kathryn Yunk
--	---

MEMORIAL GIFTS

In Memory of Jean Apple Deb and Peter Johnson In Memory of Gerry Biehl Diane Dalton Janet and Bill Hume Maureen Kania Swokowski Ritz Holman LLP Catherine Rynkiewicz In Memory of Michael Bolger Richard and Sara Aster Bechthold Family Fund Ginny Bolger John and Caryl Brubaker Roger and Regina Dirksen Ken and Barbara Donner Connie and John Kordsmeier Sheldon and Marianne Lubar Michael and Patricia McCauley Jere McGaffey Andrew Mendelson Tony and Donna Meyer Bob and Janet Montgomery Patrick and Noreen Regan Brigid Rooney Dick and Fran Rubinstein In Memory of Edie DeBrue Alison Riedi In Memory of James Allen Dix Mary Paula Dix George and Kathy Schneider In Memory of Anne Dow Norm and Judy Lasca In Memory of Edward M. Dowling Diane Dalton In Memory of Byron T. and Suzanne S. Foster Foster Family Foundation Elizabeth Veach	In Memory of Lloyd Gerlach David and Carol Anderson Dan and Gwen Armbrust Robert W. Baird & Co. Bechthold Family Fund Anthony and Andrea Bryant Family Fund Roger and Regina Dirksen Steve and Sue Gryniewicz Bill and Sandy Haack Ms. Carol S. Haack Susan Hay and Mark Duszynski Connie and John Kordsmeier Marina and Frank Krejci Christine and John McDermott James and Mary Jo Mueller Peggy and Bill Mulligan William Read and Mary Myers Ann and Warren Pierson Dr. Jeffrey and Pamela Shovers Scott and Mary Ellen Stanek Michael and Linda Stolz Roy and Ginny Wagner YPO Gold Wisconsin Chapter In Memory of F. William Haberman Rose Sadlon In Memory of Bob Holmes Jan Effinger In Memory of Richard Ippolito Bill Dosemagen and Robin Ahrens In Memory of Otho Kile Jr Kristine Kile In Memory of Art Laskin The Wiley Family In Memory of Karl and Mona Malden Bo Ivekich and Susan Dziedzic In Memory of Patty McCallum Thomas and Mary Dorer Thomas and Marcia Flanagan Timothy and Mary Keaveny Bruce and Jeanne Kress	Scott and Julie Miller Mary Simkin Joan Turner In Memory of Jack McKeithan Connie and John Kordsmeier In Memory of Gordana Racic Milan Racic In Memory of Eleanor Repinski Gillian Lester-George and Manuel Montesinos In Memory of Peggy Rose Katharine Banzhaf Diane Dalton In Memory of Vasumati Sabnis Suman Sabnis In Memory of Kathleen Schaefer Rich Ciardo and Beth Dean Thomas Herdeman and Peggy Chapman Allan and Mary Grau Rosenwald Jo Ann Stade In Memory of Kristine Schmidt Kathryn Bloomberg In Memory of Anne Stratton Bradley Impact Fund Marina and Frank Krejci David and Camille Kundert In Memory of Fr. John Sullivan Eileen O'Sullivan In Memory of Diane C. Treptow Ron Treptow In Memory of Jean Walker Janet Dunst In Memory of Edwin S. Watts, M.D. Nancy Blanchard Watts In Memory of Sandra Weber A.J. Star John Weber In Memory of Edwin Wiley The Wiley Family
---	--	--

HONORING GIFTS

In Honor of Dr. Mary Arenberg and Dr. George Schroeder

Julie Bohnhoff-Overby

In Honor of Sara Aster

Joan Hardy

In Honor and Appreciation of Patty and Jay Baker

James and Elaine Sweet

In Honor of Jay Baker's Birthday

Jack and Ruth Beck

In Honor of Katharine Banzhaf

Alfred Buettner

Steven Stone and Julie Banzhaf-Stone

In Honor of Matt and Kellen Bartel

Tommie and Monica Jones

In Honor of Leigh Birmingham

Andy and Amy Ardis

In Honor of Mark Clements and Chad Bauman

Micky and Ron Sadoff

In Honor of Bob and Karen Dean

Thomas and Suzanne McKale

In Honor of Peggy Flynn

D. Paulette Flynn

In Honor of Alex and Haley Gerding

Anonymous

In Honor of Brent and Kate Halfwassen's Wedding Anniversary

Colin and Karen Halfwassen

In Honor of Joe Hanreddy

Charles and Estella Lauter

In Honor of Deb Johnson's Birthday

Anonymous

Dale and Carolee Heinen

Lee Kingston

Donna Kuhtz

Phyllis Lardinois

Susan Psaris

David and Nancy Wareham

In Honor of Marina and Frank Krejci's 35th Anniversary

Peter Coffey and Kristine Cleary

In Honor of David and Camille Kundert's 50th Anniversary

Jim and Marge Hartwig

Mary Sorrentino

In Honor of Eli Kuzma

Jack Mitchell

In Honor of Carol Lowey

Kim and Judy Casper

In Honor of Rob and Carol Manegold

Julie and Mark Petri

In Honor of Patti McKeithan

Jack Gebhardt and Deborah

McKeithan-Gebhardt

In Honor of Sally and Jim Mergener's 50th Anniversary

Jinny and Les Wilson

In Honor of Susan Robertson

Louis and Edythe Manza

In Honor of Chuck Rozewicz

Morgen Clarey

Amy Dorman

Alli Engelsma-Mosser

Meghan Roesner

In Honor of Ann F. Shepherd

Rebecca Harms

In Honor of Deborah C. Tomczyk

Mueller Communications LLC

Ask about
Preplanning.
Consultations
are free.

414-964-3111



Goodman • Bensman

WHITEFISH BAY | FUNERAL HOME

Earth-friendly. Dignified. Respectful.

Traditional burial and cremation services are also available.

4750 North Santa Monica Blvd., Whitefish Bay | goodmanbensman.com

Debra Marcus Watton, President | Terry Kleinman, Preneed Consultant



At Milwaukee Catholic Home, we believe that an engaged life is a full life. And the more aspects of your life that you engage, the healthier you age.

A Life Engaged brings exceptional programming that engages the whole person, encouraging you to be your best self at every age.

Visit alifeengaged.org to learn more and register for unique events open to the public!



A LIFE ENGAGED

on to your next adventure

A Milwaukee Catholic Home Program

2462 N. Prospect Avenue, Milwaukee, WI 53211 • alifeengaged.org

2019-20 CONCORDIA PLAYERS THEATRE SEASON



MEET ME IN ST. LOUIS

NOV 7-9, 7:30PM | NOV 10, 1:30PM

JUNIE B. JONES THE MUSICAL

FEB 14-15, 7:00PM | FEB 16, 1:30PM



MEDEA

MEDEA

APRIL 23-25, 7:30PM | APRIL 25-26, 1:30PM

ROMEO AND JULIET

JUNE 18-20, 7:30PM | JUNE 20, 1:30PM



Romeo
& Juliet

Concordia University Wisconsin | Todd Wehr Auditorium
12800 N. Lake Shore Dr. | Mequon, WI 53097
Tickets: 262-243-4444 | Theatre Office: 262-243-2035



CONCORDIA
UNIVERSITY
WISCONSIN

A must see for adults 55+!



ST. RITA SQUARE

A CAPRI COMMUNITY

Yoga Studio • Multiple Dining Venues
Outdoor Piazza • Granite Countertops
In-Unit Laundry • Pet Friendly • Much More

★★★★

OPENING SPRING 2020

(414) 588-0039 | Milwaukee
StRitaSquare.com



GRACE COMMONS

A CAPRI COMMUNITY

Walking Paths • Multiple Dining Venues
Courtyard with Game Area & Fireplace
Exercise Room • Pet Friendly • Much More

★★★★

OPENING SPRING 2020

(262) 305-7646 | Menomonee Falls
GraceCommonsLiving.com

Rated M for Mature



Authentic • Abundant • Affordable



Rodizio's unique dining experience features endless sizzling grilled meats carved tableside complemented by unlimited sides and award-winning gourmet salads plus signature juices, cocktails and homemade desserts.

Group dining & private event spaces for holiday parties.

Parking validation and Weekend Valet

777 North Water St. | (414)431.3106 | rodizio.com



Dinner AND A Show



Arts calendar paired with local restaurants

Dinner AND A Show



RUDDIGORE (OR THE WITCH'S CURSE)

Skylight Music Theatre

Skylight and Milwaukee Opera Theatre collaborate to create an imaginatively reinvigorated performance of the gothic melodrama *Ruddigore*.

January 2 – 19

Studio Theatre at
Broadway Theatre
Center
(414) 291-7800



LOST IN BOSTON

Oconomowoc Arts Center

Hit Broadway shows sometimes cut great songs. Joel Kopischke, Rana Roman, and Ryan Cappleman bring to light rediscovered gems from well-known classics.

January 3 – 4

Oconomowoc Arts
Center
(262) 560-3172



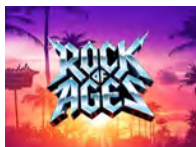
THE MERCY SEAT

Outskirts Theatre

September 12, 2001. A man and a woman explore the choices now available to them in an existence different from the one they had lived just the day before.

January 3 – 11

The Underground
Collaborative
(414) 367-6484



ROCK OF AGES

Greendale Community Theatre

Rock of Ages takes you back to the times of big bands with big egos playing big guitar solos and sporting even bigger hair!

January 9 – 18

Greendale High School
greendaletheatre.org



Bring in this ad
to receive

**ONE FREE
MARGARITA**

with the purchase
of a Dinner Entree.

Not good with any other offers.
Expires 3/31/20.

7118 West State Street | Wauwatosa, WI
414-258-5600
www.HECKTORS.com



PIER 106 106 W Wells St | Milwaukee, WI 53203
seafood tavern www.pier106seafoodtavern.com
— Milwaukee's Local Choice for Seafood —



JACKSON'S
BLUE RIBBON PUB

IN THE
HISTORIC BREWERY
NEIGHBORHOOD

**GOOD PEOPLE.
GREAT FOOD.
COLD BEER.**

1203 N 10TH STREET, MILWAUKEE, WI 53205
jacksonsmke.com



NORTH SHORE
NSB
BOULANGERIE

French
Pastries,
Breads,
Coffee and
Cafe Menu

4401 North Oakland Ave | 414.963.2153
www.northshoreboulangerie.com

Dinner AND A Show



ON GOLDEN POND

Racine Theatre Guild

With Norman's failing memory and health, this year is blanketed in melancholy until he forms an unexpected bond with his future grandson.

January 10 – 26

Racine Theatre Guild

(262) 633-4218



JOHN MUELLER'S WINTER DANCE PARTY

Oconomowoc Arts Center

Come in out of the cold as the OAC's Main Stage heats up with the iconic music of rock n' roll legends in *John Mueller's Winter Dance Party!*

January 11

Oconomowoc Arts

Center

(262) 560-3172



THE LEGEND OF GEORGIA MCBRIDE

Milwaukee Repertory Theater

An Elvis impersonator with a baby on the way. When the owner of the bar hires a drag show to attract more customers, he's out of a job. Or is he?

January 14 –

February 9

Quadracci Powerhouse

(414) 224-9490



THE GOSPEL AT COLONUS

Skylight Music Theatre

With the ground-shaking thunder of a revival meeting and an electrifying gospel and blues score, it is an exuberant re-telling of Sophocles' *Oedipus at Colonus*.

January 16 – 26

Cabot Theatre

(414) 291-7800

WEISSGERBER'S
GOLDEN MAST INN
on Okauchee Lake

Lakeside Dining

W349 N5293 Lacy's Lane | Okauchee, WI
262-567-7047 | www.goldenmastinn.com

CRAFTING COMMUNITY
1997

ROCK BOTTOM
RESTAURANT & BREWERY

740 N. PLANKINTON AVE.
(414) 276-3030 | WWW.ROCKBOTTOM.COM

ELSA'S MARTINI

Our kitchen cooks until 1 a.m.
Our bar shakes & stirs until 2 a.m.

ELSA'S ON JEFFERSON 833

Fresh, Healthy, Modern

huvé

Vietnamese Inspired Cuisine

BAY VIEW
2691 S. Kinnickinnic Ave
414-294-0483

WAUWATOSA
6519 W. North Ave
414-585-0577

www.huerestaurants.com

Dinner AND A Show



THE MARVELOUS WONDERETTES

Sunset Playhouse

It's the 1958 Springfield High School prom where we meet Betty Jean, Cindy Lou, Missy, and Suzy, four girls with hopes and dreams as big as their crinoline skirts!

January 16 –

February 1

Furlan Auditorium
(262) 782-4430



TONY DESARE

Cedarburg Performing Arts Center

Named a Rising Star Male Vocalist by Downbeat magazine, DeSare has lived up to this distinction with his acclaimed concert performances.

January 17

Cedarburg Performing Arts Center
(262) 376-6161



CHASIN' DEM BLUES

Milwaukee Repertory Theater

This revival of a Rep premiere (previously titled *Grafton City Blues*) explores the inspiring story of Grafton, Wisconsin's Paramount Records.

January 17 –

March 22

Stackner Cabaret
(414) 224-9490



SYMPHONIC POWER

Milwaukee Youth Symphony Orchestra

Featuring the Percussion Ensemble, Wind Ensemble, and Metropolitan Symphony Orchestra.

January 24

Uihlein Hall
(414) 267-2950

741 N Milwaukee St | Milwaukee, WI 53202
(414) 225-0000 | zarletti.net

Artisan Plates & Craft Cocktails • Skylight Lounge Open Late
Private Event Space Available

FIREFLY

7754 Harwood Ave, Wauwatosa, WI • 414.431.1444
www.fireflytosa.com

vintage 38
wine bar • merchant

5690 Broad Street
Greendale, WI

[f](https://www.facebook.com/vintage38greendale) [i](https://www.instagram.com/vintage38greendale) [t](https://www.twitter.com/vintage38greendale)

www.vintage38greendale.com

centro

RUSTIC ITALIAN CUISINE

808 E CENTER ST | 414 455 3751
CENTROCAFERIVERWEST.COM






MODERN VINTAGE

OUR NEW TAKE ON STEAK

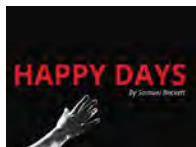
Modern with a vintage pedigree, indulge in acclaimed steaks, seafood & more at the heart of gaming excitement in downtown Milwaukee.

DREAM DANCE STEAKHOUSE™

- POTAWATOMI HOTEL & CASINO -

Explore the menu: paysbig.com/dining   

Dinner AND A Show



HAPPY DAYS

Renaissance Theaterworks

Winnie's buoyant optimism shields her from the harsh glare of the inevitable in Beckett's unforgettable masterpiece of modern theater.

January 24 –

February 16

Studio Theatre at
Broadway Theatre Center
(414) 291-7800



NOBLE VISION

Milwaukee Youth Symphony Orchestra

This concert showcases our flagship orchestra, the Senior Symphony, as well as the Brass Choir.

January 25

Uihlein Hall

(414) 267-2950



HARP SHOWCASE

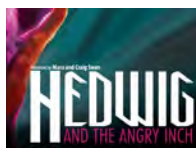
Frankly Music

Kelsey Molinari, harp, and Marta Aznavoorian, piano, make their FM debuts, joined by versatile returning cellist Alexander Hersh.

January 27

Schwan Concert Hall

franklymusic.org



HEDWIG AND THE ANGRY INCH

Milwaukee Repertory Theater

This musical sensation played to record-breaking sell-out crowds on Broadway telling the story of one of the most unique characters to ever hit the stage.

January 28 –

March 8

Stiemke Studio
Theater

(414) 224-9490



CHAR'D - BAR & GRILL

GOOD STEAK. GREAT VEGETABLES.

222 E Erie St, Milwaukee | 414.885.2611 | Chardmke.com



Monterey Bay
Aquarium
Seafood
Watch



SCREAMING TUNA
Sushi & Asian Fusion

106 W SEEBOTH MILWAUKEE, WI 53204
414 763 1637 • WWW.SCREAMINGTUNA.COM

FREE DRINK

with purchase of another drink.

Y NOT II

708 E. Lyon St. • 347-9972

Please bring your theatre ticket stub or this ad to receive a free drink of equal or lesser value with the purchase of another drink.

One free drink per person per visit.

Expires 3/31/20.



Minutes Away,
Miles from Ordinary.

414.223.0100

649 East Erie Street Milwaukee

Chef driven cuisine, comfortable for all occasions

HAPPY HOUR MONDAY-FRIDAY 3PM-7PM

HOURS: Monday 4-cis • Tuesday-Sunday, 11-cis

www.milwaukeeesailloft.com

Dinner AND A Show



WINTERDANCES 2020

UWM Peck School of the Arts

Winterdances will feature a world premiere by dance faculty Simone Ferro, in collaboration with UWM Director of Bands John Climer.

January 30 –
February 2
Mainstage Theatre
(414) 229-4308



MARS LOST

Lake Country Playhouse

A world premiere about grief, loss and the lengths we are willing to travel in order to feel whole, written by local playwright, actor and director Justin Spanbauer.

January 31 –
February 16
Lake Country
Playhouse
(262) 367-4697



A SMALL FIRE

Next Act Theatre

Emily, a successful business woman, suddenly and inexplicably begins to lose her senses – first smell, then taste, then sight.

January 30 –
February 23
Next Act Theatre
(414) 278-0765



THE 25TH ANNUAL PUTNAM COUNTY SPELLING BEE

Skylight Music Theatre

A group of quirky, socially awkward over-achievers find joy, heartache, and a purpose as they compete in the Bee.

February 6 – 23
Cabot Theatre
(414) 291-7800



COME BACK

Waukesha Civic Theatre

Sky has been left with the task of finding the perfect resting place for her best friend's remains in an adventure teaching that it's not about the destination, but the journey.

February 6 – 23
Waukesha Civic
Theatre
(262) 547-0708



FOUR GUYZ IN DINNER JACKETS "NOW IN TECHNICOLOR"

Oconomowoc Arts Center

The sounds and sights of the Golden Age with stirring vocal harmony, comedy, and captivating choreography.

February 7 – 8
Oconomowoc Arts
Center
(262) 560-3172

2498 N Bartlett

414.763.4811



Dinner AND A Show



33 VARIATIONS

Falls Patio Players

A mother coming to terms with her daughter. A composer coming to terms with his genius. Even though they're separated by 200 years.

February 7 – 16

North Middle School Auditorium



MELODIOUS WOMEN

Wisconsin Philharmonic

Women's right to vote turns a century-old, commemorate this special occasion with performances by talented women composers.

February 9

Sharon Lynne Wilson Center

(262) 547-1858



MUSICAL DIALOGUES CONCERT

Philomusica String Quartet

Join us for the Philomusica String Quartet's February concert featuring Bach, Mozart, and Schumann.

February 10

Schwan Concert Hall

(414) 443-8702



JUNIE B. JONES, THE MUSICAL

Concordia University Theatre

A delightful adaptation of four of Barbara Park's best-selling books brought to life in a genuinely comical (and not strictly-for-kids) musical.

February 11 – 16

Todd Wehr Auditorium

(262) 243-4444



FLUTE FANFARE

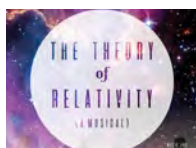
Milwaukee Youth Symphony Orchestra

This concert will feature MYSO's two flute choirs, Flute Chorale and Chamber Flute Ensemble.

February 12

Schwan Concert Hall

(414) 267-2950



THE THEORY OF RELATIVITY (A MUSICAL)

Marquette Theatre

This unconventional musical celebrates the theory that we are more connected than we realize and shares heartache, dreams, and our shared human connection.

February 14 – 23

Helpaer Theatre

(414) 288-7504



MOLINARI AND YARMEL DUO

4 O'clocks Free Concert Series

The MSO duo of Kelsey Molinari and Heather Yarmel celebrate Valentine's Day with an afternoon of intimate serenades for flute and harp.

February 16

First Congregational Church of Wauwatosa

Wauwatosa, WI 53213

(414) 258-7375



AUDIOBODY ELECTRONIC CIRCUS ARTS

Wisconsin Lutheran College

A mix of circus arts, relentless comedy, award-winning technology, full-body contortion, juggling, spectacular LED lighting effects, and upbeat music!

February 21

Schwan Concert Hall

(414) 443-8802

Dinner AND A Show



A FOX ON THE FAIRWAY

Racine Theatre Guild

Two rival country clubs are competing head-to-head in the Annual Inter-club Golf Tournament, and madcap adventures ensue.

February 21 –
March 8

Racine Theatre Guild
(262) 633-4218



NO WAKE

Milwaukee Chamber Theatre

With determination (and a bullhorn), elderly Peter Michaels is on a mission to save the loons of Lake Winnepesaukee, who are dying in record numbers.

February 21 –
March 15

Studio Theatre at
Broadway Theatre Center
(414) 291-7800



SYMPHONIC SPECTACULAR

Milwaukee Youth Symphony Orchestra

Featuring the Prelude Orchestra, combined String Orchestras North & Central, and Philharmonia.

February 22
Shattuck Auditorium
(414) 267-2950



CLASSIC CADENCES

Milwaukee Youth Symphony Orchestra

The combined String Orchestras South & West, Sinfonia, and Chamber Orchestra are featured.

February 23
Shattuck Auditorium
(414) 267-2950



NOISES OFF

Sunset Playhouse

As a company of actors attempts to deliver a comedy onstage, we go behind the scenes where the real farce explodes.

February 27 –
March 15

Furlan Auditorium
(262) 782-4430



CARRIE, THE MUSICAL

Outskirts Theatre

Based on Stephen King's bestselling novel. Carrie's just discovered she's got a special power, and if pushed too far, she's not afraid to use it...

February 28 –
March 8

Waukesha North HS
Auditorium
(414) 367-6484



ECLIPSED

Milwaukee Repertory Theater

Written by actress-playwright Danai Gurira comes a stunning tale of hope and resilience set in the midst of the Liberian Civil War.

March 3 – 29

Quadracci Powerhouse
(414) 224-9490



HANDEL'S MESSIAH

Waukesha Choral Union

We perform *Handel's Messiah* as this year's gift to the community. We welcome community singers to the stage with us for this majestic and powerful presentation.

March 8

Shattuck Auditorium
(262) 238-3454

Dinner AND A Show



THE LARAMIE PROJECT

Pius XI Performing Arts

Based on interviews after the murder of Matthew Shepard, this show tells the story of what happens when a small town is suddenly thrust into the spotlight.

March 12 – 15

Black Box Theatre

(414) 290-0204



BIG FISH

Waukesha Civic Theatre

Based on the hit book and film, *Big Fish* follows the stories of Edward Bloom, a father, husband, traveling salesman, and master storyteller.

March 12 – 29

Waukesha Civic

Theatre

(262) 547-0708



ELINA CHEKAN, GUITAR

4 O'clocks Free Concert Series

Expressive, delicate, versatile sounds of a classical guitar. UWM instructor Elina Chekan will amaze you with her prowess.

March 16

First Congregational

Church of Wauwatosa

Wauwatosa, WI 53213

(414) 258-7375



SYMPHONY SHOWCASE

Frankly Music

A finale showcasing the stellar musicians of the Milwaukee Symphony Orchestra.

March 16

Schwan Concert Hall

franklymusic.org



EVITA

Skylight Music Theatre

The story follows Eva Duarte and her meteoric rise from impoverished child to becoming the most powerful woman in Latin America.

March 19 – 29

Cabot Theatre

(414) 291-7800



RICKY NELSON REMEMBERED

Cedarburg Performing Arts Center

Ricky Nelson Remembered is a musical celebration of America's first Teen Idol and Rock and Roll Hall of Famer Ricky Nelson.

March 20

Cedarburg Performing

Arts Center

(262) 376-6161



THE SECRET GARDEN

Lake Country Playhouse

This enchanting classic of children's literature is re-imagined in brilliant musical style by composer Lucy Simon and Marsha Norman.

March 20 – April 5

Lake Country

Playhouse

(262) 367-4697



SOMETHING ROTTEN!

Peninsula Players Theatre

Welcome to the Renaissance, where the Bottom brothers craft the first musical to compete with "the Bard."

July 8 – 26

Peninsula Players

Theatre

(920) 868-3287



Life Enriched

Trust Clement Manor for a Continuum of Care

- Adult Day Services
- Independent and Assisted Living
- Transitional Care • Long-Term Care
- Clare Suites Memory Care Assisted Living
- Center for Enrichment

CALL US TODAY TO SCHEDULE A VISIT!

3939 S. 92nd St., Greenfield, WI
(414) 546-7000 | clementmanor.com

Clement
Manor

Sponsored by the School
Sisters of St. Francis



REDESIGN

your old or broken jewelry and

FALL IN LOVE

...again!



Modernize an old setting,
recreate an estate piece,
turn ordinary into
extraordinary.

We make it special. We make it unique. **We make it just for you.**

EAST • TOWNE • JEWELER
CUSTOM DESIGN SPECIALIST
Inc.

**EAST TOWNE SQUARE • 1515 WEST
MEQUON RD., MEQUON • 262.241.8007**

www.easttownejewelers.com

Subscribe to our
email newsletter on
footlights.com!



Stay up to date on performing arts stories
and events in Milwaukee and Madison!



Giving in small ways can make a **big difference.**

We all have gifts to give and they each can make a big difference. Tune in to Milwaukee's Philanthropic Community on Sundays at 10am on WISN AM1130 or listen on demand to learn how you can make an impact in our community.



The Heart of Milwaukee Philanthropy™



Milwaukee's Philanthropic Community is brought to you by Ellenbecker Investment Group.

Listen on demand at **ellenbecker.com/radio** or on the following:



Exceptional Planning. Extraordinary Service.®

Advisory services offered through Ellenbecker Investment Group, Inc. (EIG), a Registered Investment Advisor. Registration does not imply a certain level of skill or training.