

Presented by Mara and Craig Swan

HEDWIG AND THE ANGRY INCH

Text by **John Cameron Mitchell**, Music and Lyrics by **Stephen Trask**
Directed by **Mark Clements**



Let us create a space that's
Uniquely you.

At Warren Barnett, we are proud to create one-of-a-kind interiors that are infused with your sense of style. Our award-winning Interior Designers hand pick high-quality furniture and accessories to craft a living space that's uniquely you.

Stop by the showroom to get started.

WARREN BARNETT
INTERIORS

262.790.1111

14755 West Capitol Drive | Brookfield, WI
warrenbarnett.com

Stickley : Lillian August : Century : Hickory White : Thayer Coggin : Hancock and Moore : Warren Barnett Boutique

Elaine's Hope

LUTHERAN HOME MEMORY CARE

NOW OPEN



The Lutheran Home is proud to present Elaine's Hope, our new memory care community. Learn more about this new community and all our senior care options.

Contact us today! 414-326-3398

www.thelutheranhome.org



Milwaukee
19-20 SEASON

VOLUME 30 | ISSUE #3

PRESIDENT + PUBLISHER **Steve Marcus**

VICE PRESIDENT **Matt Thiele**

DIRECTOR OF OPERATIONS **Greg Widener**

ART DIRECTOR **Sarah Sallmann**

GRAPHIC DESIGNERS **Nicolette Bealhen** | **Sydney Kornowski**

VENUE RELATIONS // MILWAUKEE & MADISON **Ryan Albrechtson**

VENUE RELATIONS // CHICAGO **Alicia Senior-Saywell**

EDITORS/Writers **Ryan Albrechtson** | **Amanda Finn**

CONTRIBUTING WRITERS **Jonathan Abarbanel**

COMPANY COMPTROLLER **Karin Marcus**

ACCOUNTING MANAGER **Lisa Cunningham**

PRODUCTION SUPERVISOR **Kyle Jewell**

ADVERTISING SALES // CHICAGO **Will M. McAuliffe** | **Dave DeGraff**

ADVERTISING SALES // MADISON **James Boylan** | **Courtney Neckar**

ADVERTISING SALES // MILWAUKEE **Jacqueline Jaske** | **Barbara Kluth** | **Daryl Skardzinski**

SALES SUPPORT **Natasha Goeller**



mp **MARCUS PROMOTIONS, INC.**

CHICAGO // MADISON // MILWAUKEE

Milwaukee: 262.782.9751 | Chicago 773.938.6681 | Madison: 608.257.4560

www.footlights.com

Footlights is published by Marcus Promotions, Inc. The content of any article in this publication is based solely on the opinion of its writer and does not necessarily reflect the opinion of Marcus Promotions, Inc., Footlights, or its staff. The center program content is at the sole discretion of the performing arts group. Any errors, omissions, or inconsistencies are their responsibility. Inquiries or comments should be directed accordingly.



Over 8,000 Wines
3,500 Liquors & 1,500 Beers

HIGH END LABELS AT EVERYDAY LOW PRICES

Award winning reputation

Named one of the 50 best wine stores in America

Voted #1 Best Liquor Store, Service, Selection and Price
by Milwaukee Magazine

Voted "Best Wine, Beer and Liquor Store"
2001-2019 by Shepherd Express Readers

Voted Top Choice Award Beer Wine Liquor Store
2019 by Milwaukee Journal Sentinel

Discount
LIQUOR
INC.

Locally Family Owned & Operated Since 1960

Milwaukee | 5031 W Oklahoma Ave. | 414.545.2175

Waukesha | 919 N Barstow Ave. | 262.547.7525

Visit us on Facebook, Twitter, Instagram or at www.discountliquor.com



WE CAN HELP YOU
WITH THE *next step.*

Independent, Assisted Living and Memory Care Communities



Premier Amenities • Personalized Care Plans • Luxury Lifestyle

HERITAGE
SENIOR LIVING

Greenfield • New Berlin
West Allis • Elm Grove
Waukesha • Menomonee Falls
Hartland • Muskego
heritagesenior.com

Schedule your
tour today!

844-658-4475

AT YOUR SERVICE. AT YOUR SIDE.



Mark Krause, Owner

For over 80 years, we have helped the families of Milwaukee and New Berlin honor their loved ones. Being a family owned funeral home, we understand the importance of family values. That's why we take pride in fulfilling your wishes with kindness, compassion and respect. We devote ourselves to the complete care of you and your family, guiding you every step of the way through one of life's most difficult times. When you need us most, we'll be right there by your side. That's our promise.

"Stop by anytime and see everything we have to offer."

Milwaukee
414-354-9400

Brookfield
262-432-8300

Milwaukee
414-464-4640

New Berlin
262-786-8009



FUNERAL HOMES & CREMATION SERVICE, INC.



David J. Frank
Landscape Contracting

***Are Your Yard &
Home in Harmony?***

Request a quote today!
davidjfrank.com

FROM THE HEART: THE LOVE STORIES OF MILWAUKEE THEATRE

By Ryan Albrechtson

There's no business like show business. For many artists, their love of the arts consumes their lives... sometimes even including their love lives! We sat down with some of our favorite local artist couples to talk about what it really takes to keep the romance alive while both building a career in the performing arts.

Jane + Chris FUELLER



"Chris and I met when I moved to Milwaukee from Detroit following my graduation from Wayne State University with a degree in Stage Management," said Jane. "He had just gotten back from a summer at the Utah Shakespeare Festival... I worked as a stage manager for a company called Theatre Tesseract. Rehearsals started two weeks after I moved here, and Chris was in the cast. We began dating before the show closed and we've been inseparable ever since."

Jane and Chris's love of this artform led to the birth of what would become a large staple in the Milwaukee theatre community: In Tandem Theatre. "We realized that we wanted to work together in our chosen industry, and that the only way to do so was to form our own company - hence, In Tandem Theatre was born," said Jane, who ran the company with her husband for over two decades. And while the dynamic duo decided to take a step back after 21 seasons, they've found that the freed up nights and weekends have given them more down time to spend together.

Brenda + Randall DODGE



"It was a showmance!" said Brenda. "We met onstage in a 2005 production of *The Pirates of Penzance* at the Moonlight Amphitheatre in Southern California."

Brenda and Randall opened Forte Theatre, a professional company based in Franklin. Their inaugural production, *Miracle on 34th Street*, ran this past December.

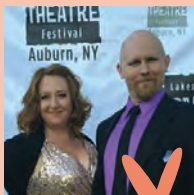
"The advantage of creating a theatre company together is that we wake up every day working side by side towards the same goal. The challenge is that we wake up every day working side by side towards the same goal," said Brenda. "All kidding aside, it's pretty incredible to share the same vision and be in the trenches every day with your partner, colleague and best friend."

The couple, and their new company, are quite the ambitious force. Currently, they are campaigning to purchase and renovate a historic hardware store in Franklin to turn into a new theatre space.

"The advantages of being a theatre couple are that you have someone who truly understands what it is like..."

- MARCEE DOHERTY-ELST -

Marcee DOHERTY-ELST + Christopher ELST



"We actually met doing a show," said Marcee, who met Christopher in 2008. "We were both in *You're A Good Man, Charlie Brown*. Christopher played Charlie Brown and I played Lucy!" Although they developed a friendship during the process, it wasn't until after the show had closed that they began to date.

Their passion for theatre went to the next level in 2013, when the couple opened their own theatre company: Theater RED. And while they've worked together on many shows with the company, and with other groups, being in the arts means that their schedules don't always align. "Being a theatre couple mostly means not seeing each other all that often," said Christopher. "The good news is we both understand a theatre schedule, so we're not as put out as the average person might be when a production bites a month or two out of the standard social schedule."

"The advantages of being a theatre couple are that you have someone who truly understands what it is like to audition, rehearse, perform and all the nerves, ups, and downs that go along with it," said Marcee. "Christopher knows what it is like for me to go into an audition, nerves aplenty, and either walk out feeling great or walk out wanting to bury my head in the sand. Christopher knows the stress, exhaustion, and joy of tech week. Christopher knows the joy of getting a role you really want and the disappointment of not."

Susan + Andrew VARELA



"We met on the National tour of the show *Evita*," said Susan. We became friends right away, but didn't start dating until the tour ended."

Susan and Andrew, after establishing themselves in New York, decided to make Milwaukee their new home. Both have performed with many local groups, and they've had the chance to work together on several projects, including *Sweeney Todd* and *Les Miserables* at Skylight Music Theatre.

"It can be challenging when a gig takes us away for weeks, or months," said Susan. "But we have a 'three week rule' - we can't go longer than that without seeing each other, no matter what. Even if it's only for 24 hours!"

That commitment to their art, and to each other, has helped them find a successful work/life balance. "We feel grateful to be in the same business, because we understand the requirements, schedule and commitment inherent in this life," said Susan.



"We met 36 years ago in San Francisco, while I was touring with *"MASTER HAROLD" ... and the boys,*" said Michael. "Ray was in the audience on our opening night there and we met at this very fancy dinner afterward."

Both Michael and Ray have had impressive performing careers, as well as taking on the hats of Artistic Directors. Ray served as Artistic Director of Skylight Music Theatre until last season, and Michael is currently in his last season as Artistic Director of Milwaukee Chamber Theatre.

"One of the greatest advantages is that we both understand the crazy highs and lows of a life in the theatre," said Michael. "There can certainly be a lot of joy and fulfillment, but there can also be a lot of instability and stress. It's a regular roller coaster. The greatest challenge is trying to find enough quality time together while we're both dealing with the long days and erratic hours."

With retirement on the horizon, the two look ahead to what other projects may arise. "It would be fun to act in something together. We haven't done that since *Guys and Dolls* at Skylight back in 1997," said Michael. "How about a gay *Odd Couple*?"

*"It would be fun to act in something together...
...How about a gay Odd Couple?"*

- C. MICHAEL WRIGHT -

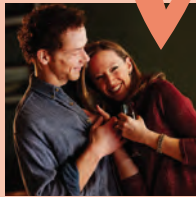


We met as performers in *Malt Shop Memories*, a jukebox musical written by a local artist," said Jes. Since then, the pair have worked on a variety of shows and projects together. Their creative personalities led them to founding the Sudbrink Performance Academy in 2015, a Waukesha based organization that offers classes and produces shows for youth performers.

The couple also run the Main Street Song and Dance Troupe, another youth arts organization. With all of these intertwined artistic endeavours, they've found there can be good and bad moments. "It makes planning a show much easier. We can have more discussion about vision and other things more often to keep the creative team on the same page," said Jacob. "Challenges come from being able to meet more often - especially if vision or ideas don't align. If you're not careful, that disagreement can carry into other parts of life."

"Working on a show together has advantages because we can stay up late at night in front of the fireplace, planning in the comfort of our home," added Jes. "We are often able to discuss a lot of the vision and intentions in the evenings and mornings, so we can arrive on the same page to meetings and rehearsals."

Laura GRAY + Jonathan WAINWRIGHT



"We met in 1999 during a Ten Minute Play Festival produced by Playwrights Studio Theatre at the Miramar Theater," said Laura. "It was my first show in Milwaukee after interning at Milwaukee Rep, and Jonathan was already working regularly with many local companies. Although we weren't in any of the same plays, there was an immediate connection and interest in each other."

Both Laura and Jonathan have built solid careers in the Milwaukee theatre community. And while their work spreads wide across a variety of companies, some of their favorite projects are when they get to work together.

"On occasion, we get to act opposite each other," said Laura. "As well as providing a chance to spend more time together, many of these moments acting with each other have been personal and professional highlights. Also, you have someone who you can come home to who understands the job. A partner you can spitball ideas with, work through a challenge, speak the same language. An ally who knows the ins and outs of the process and the highs and lows of the profession."

Tami WORKENTIN + Jim PICKERING




"Jim and I met when we worked on *Exonerated*, the inaugural production of Next Act's new space," said Tami. "Jim played a cop who interrogated my character, Sunny, who's husband was wrongly accused and placed on death row."

"Prior to the start of rehearsals I reached out to Jim via email to tell him how nice it will be to work together. He responded back with a list of rules of when I was allowed to speak to him, which was not before noon, and a number of other star requirements. I had no idea he was pulling my leg!"

The two of them have a long list of theatrical roles under their belts, many of which have been shared together. Most recently, the duo was seen in Milwaukee Rep's *A Christmas Carol*. "It's nice to have a shared experience especially during the hustle and bustle of the holidays," said Tami. "It feels like we truly experience the fullness of the season as we prance around in our Dickensian costumes like moving Christmas cards. I look across the rehearsal hall and see him kicking up his heels in the Fezziwig dance, then getting really frustrated with himself and his momentary two left feet, and it makes me giggle."

"He responded back with a list of rules of when I was allowed to speak to him, which was not before noon..."

- TAMI WORKENTIN -



We lost the child we knew.
Now we've found her again.
We will

Rise
above

If someone you love is struggling with mental health or addiction, you don't have to suffer alone. At Rogers Behavioral Health, together we can not only face your challenges, we can rise above them.

ROGERS
Behavioral Health

rogersbh.org | 800-767-4411

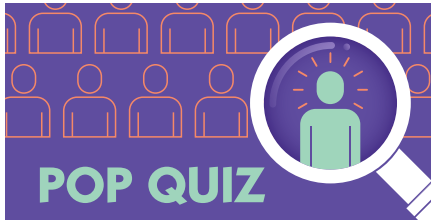
#CAN YOU
HEAR MEMKE

88.9 FM



**ELEVATING
ELECTRIC
HYPERDIMENSIONAL**

IMMORTAL GIRLFRIEND
MILWAUKEE BROTHER DUO
FULL ARTICLE AT RADIOMILWAUKEE.ORG




POP QUIZ

ARE YOU...
an extrovert?
good at connecting w/ others?
genuine and honest?
a good communicator?

DO YOU...
smile and laugh easily?
love the arts?
wish for a job w/ benefits and flexibility?

Did you or would someone you know answer yes to all of these questions? Footlights is growing and is seeking additional **Sales Executives**.

To apply, please contact our Director of Sales at mtthiele@footlights.com.

For more information & job opportunities visit:
 **FOOTLIGHTS.COM**

centuryhouseinc.com

art is everywhere



THE CENTURY HOUSE

Modern | Scandinavian Interiors

3029 university ave, madison




Treetops Landscape Design, Inc.

Landscape Architecture, Contracting & Property Management

(262) 375-0050 WWW.TREETOPSINC.COM

Announcing the 2020 *Footlights People's Choice Awards*

For the 4th year in a row, Footlights is proud to announce the 2020 Footlights People's Choice Awards. The event, which first began in 2017, is a celebration of all of the artists and arts organization in the Greater Milwaukee Area.

"We're so grateful for this opportunity to bring so many local artists together each year," said Ryan Albrechtson, the Footlights People's Choice Awards Chair. "Seeing all of the excitement, celebrating, and connecting on Awards night is one of the best parts of my job."

This 2020 Footlights People's Choice Awards will be held on Thursday, June 18th at the Broadway Theatre Center, sponsored by Skylight Music Theatre.

"We look forward to welcoming the arts community to our beautiful home, the Cabot Theatre," said Jack R. Lemmon, the Executive Director for Skylight Music Theatre. "As Skylight celebrates its 60th anniversary season this year, we are delighted to also celebrate our vibrant, local arts scene as sponsor of the 2020 Footlights People's Choice Awards."

In a change from the previous years, the 2020 Awards will have two co-hosts, who will follow in the footsteps of past hosts John McGivern and Matt Kemple. The first of the co-hosts is the incredible Rána Roman, a local performer who you've surely seen up on stage at Skylight Music Theatre, Milwaukee Repertory Theater, Renaissance Theaterworks, and many others. Stay tuned for our announcement of the second co-host.

Nominations for the 2020 Footlights People's Choice Awards will open on Thursday, January 2nd at 10:00am CST, and will remain open until Tuesday, March 31st at 11:59pm CST. Voting will begin on Monday, April 6th at 10:00am CST, and close Friday, April 24th at 11:59pm CST. Roman and her soon-to-be announced co-host will announce the finalists at a Finalist Happy Hour event on Thursday, May 7th at the Broadway Theatre Center.

As always, there will be a flurry of activity on the big day including the VIP Party, Red Carpet Hour, the Ceremony, and After Party. Make sure to keep your eye on Footlights.com, and follow us on social media, to be the first to know the details - from presenters, performers, and other special surprises!



Skylight
music theatre





***“I traveled
from Chicago
because this
is where
I found the
right cardiac
expertise.”***

– Dr. Boxer
Heart Patient

**Unmatched expertise.
Offering innovative heart
and vascular options.**

Soon after Dr. Robert Boxer, a retired physician, started having shortness of breath, he was diagnosed with congestive heart failure. Our expert team knew the MitraClip, a minimally invasive procedure, was the best course of action to stop the leaking in his heart valve. Dr. Boxer traveled to Milwaukee for surgery on Thursday and went home to his family in Chicago on Friday. For any heart or vascular issue, choose the team that delivers what is possible.



What Is Possible

Learn more about Dr. Boxer's story
at froedtert.com/possible

MILWAUKEE REPERTORY THEATER



Milwaukee Rep is the largest performing arts organization in Wisconsin in terms of audiences served and one of the largest professional theaters in the country. For over 65 years, Milwaukee Rep has gained a national reputation as an incubator of new work, an agent of community change and a forward-thinking provider of vital arts education programs.

Each year, Milwaukee Rep welcomes up to 275,000 people at nearly 700 performances of 15 productions ranging from compelling dramas, powerful classics, new plays and full-scale musicals in its three unique performance venues — the Quadracci Powerhouse (720 seats), Stiemke Studio (205 seats) and Stackner Cabaret (186 seats).

Under the leadership of **Artistic Director Mark Clements** and **Executive Director Chad Bauman**, Milwaukee Rep ignites positive change in the cultural, social, and economic vitality of its community by creating world-class theater experiences that entertain, provoke, and inspire meaningful dialogue among an audience representative of Milwaukee's rich diversity.



Mark Clements
Artistic Director



Chad Bauman
Executive Director

MILWAUKEE REP | PATRON SERVICES

Contact Info

Ticket Office

Phone Number: 414-224-9490

Fax Number: 414-225-5490

Mailing Address: Milwaukee Repertory Theater
Patty & Jay Baker Theater Complex
108 E. Wells Street; Milwaukee, WI 53202

E-mail: tickets@MilwaukeeRep.com

Hours of Operation:

Monday – Sunday Noon to 6 pm

On days with performances, the Ticket Office will remain open until show time.

Administrative Office

Phone Number: 414-224-1761

Fax Number: 414-224-9097

Mailing Address: Milwaukee Repertory Theater
Patty & Jay Baker Theater Complex
108 E. Wells Street; Milwaukee, WI 53202

Hours of Operation:

Monday – Friday 8:30 am to 5:30 pm

Emergency Phone Number

If you anticipate the need to be reached during a performance, leave your name and seat location with your contact information, along with instructions, to direct emergency phone calls to the House Manager at **414-290-5379** or **414-224-1761, ext. 379**.

Cellular Phones/Electronic Paging Devices

Please remember to turn off your cell phones and electronic paging devices.

In case of an emergency, these items may be left with the House Manager.

Also, as a courtesy to your fellow theatergoers and the actors on stage, please refrain from text messaging during the performance. Thank you!

YOUR MILWAUKEE REP EXPERIENCE

Concessions

Enjoy a drink or dessert in the Quadracci Powerhouse or Stiemke Studio lobby prior to the performance or at intermission. Please remember that food and drink (except bottled water and Rep sippy cups), are not allowed in the theater.

Gift Shop

Located in the Quadracci Powerhouse is The Rep's Gift Shop, which offers show-specific merchandise and Rep logo products, as well as books and scripts of current and past productions. You can also purchase parking passes.

Rep-in-Depth

Get an insider's look at the play from a member of the cast or artistic team with a discussion that begins approximately 45 minutes prior to every performance in the Quadracci Powerhouse and Stiemke Studio.

Rep TalkBacks

After select performances, engage in a deeper conversation with members of the cast, artistic team and occasional special guests. Get TalkBack schedules by calling the Ticket Office at **414-224-9490**, online at www.MilwaukeeRep.com.

MILWAUKEE REP SERVICES

Access



Deaf or Hard of Hearing Services: The Quadracci Powerhouse (QP) and the Stiemke Studio are equipped with an **infrared listening system** which ensures clarity of sound from any seat in the house. Performances are offered in **American Sign Language** for a Thursday evening of all QP productions and one Sunday matinee for all Stiemke Studio productions. We also offer a **Captioned Theater** performance during the second to last Sunday matinee performance of all QP productions. Please call The Rep Ticket Office at **414-224-9490** for more information. **Script synopses** are available upon request for QP and Stiemke Studio productions by calling **414-224-1761**.

Blind or Low Vision Services: Large print programs are available in the Quadracci Powerhouse and Stiemke Studio from any usher. Every Rep production has one **audio-described performance**. Using an earpiece attached to a small hand-held receiver, patrons hear a live, real-time description of the action on stage. Call the Ticket Office for more information.

Wheelchairs All Rep stages are fully accessible. Please contact the Ticket Office at **414-224-9490**.

Late Arrivals

Out of courtesy to the actors and audience, patrons arriving after the performance has started will be seated at the discretion of House Management.

Parking

Milwaukee Center offers onsite parking with indoor access to The Rep operated by InterPark. Enter from Kilbourn Avenue or Water Street.

Policy on Children

Children under age seven are not admitted in the theater.

Recording Equipment and Cameras

The use of recording equipment and cameras in the theater is strictly forbidden.

MILWAUKEE REPERTORY THEATER

#DestinyOfDesireMKE @milwrep

APRIL 21 - MAY 17, 2020 | QUADRACCI POWERHOUSE

*Telenovela of **Passion and Deception**
with Lively **Music and Dance!***

DESTINY of Desire

*"Simply fabulous
and riotously funny...
HIGHLY ENTERTAINING"
— Chicago Tribune*

By Karen Zacarías
Directed by José Luis Valenzuela



Sponsored by



**Rockwell
Automation**

Executive Producers Rhonda & Greg Oberland

www.MilwaukeeRep.com | 414-224-9490

Photo by Tony Arrasmith/Arrasmith and Associates featuring Courtney Arango and Stephanie Gómez



SEE YOUR GIFT INSPIRE



UNITEDPERFORMINGARTSFUND

INVEST IN INSPIRATION

When you donate to the United Performing Arts Fund, you support more than a show. Your gift is an investment in our local community, helping to enrich our culture, the economy and arts education for the children in our area. Let that be your cue to act.

DONATE TODAY AT UPAF.ORG/DONATE.

Milwaukee Ballet, *The Nutcracker*, 2017, Marize Fumero, Photo by Mark Frohna;
First Stage, *The Wiz*, DiMonte Henning, Darrington Clark and Reese Parish, Photo by Paul Ruffolo;
Milwaukee Youth Symphony Orchestra, Photo by Ron Oshima

Mark Clements
Artistic Director



Chad Bauman
Executive Director

Presented by Mara and Craig Swan

HEDWIG AND THE ANGRY INCH

Text by **John Cameron Mitchell**, Music and Lyrics by **Stephen Trask**

Directed by
Mark Clements ♦

Scenic Designer
Scott Davis

Lighting Designer
Jason Fassl

Projection Designer
Mike Tutaj

Voice & Text Director
Clare Arena Haden

New York Casting
Michael Cassara Casting

Music Director
Dan Kazemi ±

Costume Designer
Mieka van der Ploeg

Sound Designer
Barry G. Funderburg

Movement Designer
Erin Kilmurray

Casting Director
Frank Honts

Stage Manager
David Hartig*

January 28 – March 8, 2020
Stiemke Studio

The Stiemke Studio Season is presented by
Ed Seaberg & Patrick Smith

Sponsored in part by



Produced Off-Broadway by Samjack, Ltd., Susann Brinkley and James B. Freydborg at the Jane Street Theatre where it opened February 14, 1998, under the direction of Peter Askin.

Originally produced in New York City by David Binder in association with the Westbeth Theatre Center, Arnold Engelman, Producing Director.

Hedwig and the Angry Inch is presented by special arrangement with
Dramatists Play Service, Inc., New York.

♦ A member of Stage Directors and Choreographers Society, an independent national labor union.

± Milwaukee Repertory Theater Associate Artist.

*Member of Actors' Equity Association, the Union of Professional Actors and Stage Managers in the United States.

The Dark Room
is the latest and greatest hidden gem in
Milwaukee's downtown dining scene.

Behind an unassuming bookshelf on the
2nd floor of Saint Kate — The Arts Hotel,
you will find a small, intimate space with rich
textures, classy character, and phenomenal food.

Discover it with a lover or a close-knit
group of friends.

It'll be like your own little secret.

But not for long. Book your table today
before everyone else finds out about it.

The Dark Room

OPENTABLE.COM

CAST

Hedwig.....	Matt Rodin*
Yitzhak.....	Bethany Thomas*
Roadies.....	Isabella Abel-Suarez, Lauryn Glenn, Brooke Johnson, Joshua Ponce, Gilberto Saenz, Nadja Simmonds, Austin Winter

THE ANGRY INCH:

Conductor/Keyboard – **Dan Kazemi**; Guitar – **Maxwell Emmet**;
Bass – **Tommy Hahn**; Drums – **Patrick Morrow**

UNDERSTUDIES:

For Matt Rodin – **Steve Watts***; Bethany Thomas – **Brooke Johnson**;
Brooke Johnson and Nadja Simmonds – **Isabella Abel-Suarez**; Isabella Abel-Suarez –
Lauryn Glenn; Gilberto Saenz – **Joshua Ponce**; Austin Winter – **Gilberto Saenz**;
Lauryn Glenn – **Nadja Simmonds**; Joshua Ponce – **Austin Winter**

Understudies never substituted for listed players unless a specific announcement is made prior to the performance.

PRODUCTION SUPPORT

Animated Content	Robert Cox
Stage Management Fellow	Josh Hart
Assistant Director	Kelsey Robins
Community Consultant.....	Kevin Kantor
Casting Consultant	Ada Karamanyan

Hedwig and the Angry Inch will be performed with no intermission.

The videotaping or other video or audio recording of this production is strictly prohibited.

*Member of Actors' Equity Association, the Union of Professional Actors and Stage Managers in the United States.

PRODUCTION STAFF

Director of Production.....	Jared Clarkin
Associate Production Manager	Kaitlyn Anderson
Co-Technical Director	John Houtler-McCoy
Co-Technical Director.....	Sean Walters
Properties Director.....	Jim Guy
Charge Scenic Artist	Jim Medved
Costume Director	Nicholas Hartman
Lighting & Video Director	Aaron Lichamer
Sound Director	J Jumbelic
Production Stage Manager	Kimberly Carolus*

Milwaukee Repertory Theater operates under an agreement between the League of Resident Theatres and Actors' Equity Association, the Union of Professional Actors and Stage Managers in the United States. The scenic, costume, lighting and sound designers in LORT Theatres are represented by United Scenic Artists, Local USA-829 of the IATSE and our stagehands and carpenters are members of Milwaukee Theatrical Stage Employees' Union IATSE Local 18. The Rep is an equal opportunity employer. Milwaukee Rep is proud to be a member of The United Performing Arts Fund (UPAF), which provides major annual financial support.



DIRECTOR'S NOTES

In 1998, I was still living in England but regularly coming to the U.S. for theatre projects. Usually, when I traveled to New York, I would have a list of “must see” shows, but would leave room for that one performance that had slipped through my net, or was just emerging into a sleeper hit. It was on one such trip in 1998 that I was told by numerous people, that whatever I had to do—beg, barter, or steal—I needed to snag a ticket for this awesome new little show playing at the Jane Street Theatre called *Hedwig and the Angry Inch*.

The Jane Street Theatre, part of the Jane Hotel, has a past befitting the show it was producing. In its past lives, it was home for the surviving crew of the *Titanic*, served as housing for the homeless, was rumored to be home to RuPaul (before they were famous), was a popular stomping ground for famous drug addicts and prostitutes, and finally became a reputable hotel and theater space. In 1998, the hotel’s ballroom was a grungy little installation theater where I found myself watching a musical I knew literally nothing about.

Seeing *Hedwig* for the first time was one of those rare “Holy Grail” kind of theatrical experiences for me. The ones that you crave as a serious theatergoer. The ones where your emotional response far exceeds anything you might have ever anticipated, and that have you thinking for days about why you were feeling the particular way you did that night. The ones that create an indelible print on your memory, long after curtain down.

Since that experience, I’ve seen *Hedwig* numerous times and each time it reaffirms my love for the show. When I started my tenure at Milwaukee Rep, I introduced musicals to the Quadracci Powerhouse stage. Now, ten years into my role as Artistic Director, I am introducing Broadway level musicals to the Stiemke Studio too—and I think *Hedwig* is the perfect show to kick that endeavor off. I’m excited and blessed to be working with such a terrific group of artists, who are as jazzed about this piece as I am. I’m happy to introduce Milwaukee Rep newcomer Matt Rodin as our Hedwig and welcome back fan-favorite Bethany Thomas as Yitzhak. With a killer band, led by Dan Kazemi, that comprise The Angry Inch, and a top-notch artistic team, we are in good hands.

Some of you have been previously “touched” by *Hedwig*, either through the soundtrack, the movie, or past stage productions. Whether you have met Hedwig before or this is your first time making her acquaintance, I hope the encounter is as profound for you as it was for me and all those involved in assembling this production.

Now, sit forward, put in your earplugs if you feel the need, and get ready to “lift up your hands!”

Best,
Mark Clements, Artistic Director

SONG LIST

“Tear Me Down”	“The Long Grift”
“The Origin of Love”	“Hedwig’s Lament”
“Sugar Daddy”	“Exquisite Corpse”
“The Angry Inch”	“Wicked Little Town (Reprise)”
“Wig in a Box”	“Midnight Radio”
“Wicked Little Town”	

BIOGRAPHIES



Matt Rodin,
Hedwig

Matt believes that love is who we are. Everything he does is in an effort to tap into people's light so that we can connect more deeply with ourselves

and one another. He's a queer maker of music, media, characters and campfires. He's the creator and host of *The Red Carpet Challenge* on Broadway.com, *The Come Up* on the Broadway Podcast Network and a monthly gathering called *Urban Campfire*. He's grateful to be telling this story with these artists in this place at this moment in time. He wouldn't be here without the love of his family, friends and Sam.



Bethany Thomas,
Yitzhak

Bethany Thomas is beyond thrilled to work on this show and to come back to Milwaukee Rep, where she appeared in *Songs for Nobodies*, *Man*

of La Mancha, *The Color Purple*, *A Christmas Carol*, *Ain't Misbehavin'* and *Ragtime*. Chicago credits include: *Into the Woods*, *A Moon for the Misbegotten* (Writers Theatre); *The Tempest* (Chicago Shakespeare); *Porgy and Bess* (Court Theatre); *Marry Me a Little* (Porchlight Music Theatre); Second City, Paramount Theatre, Marriott Lincolnshire. A recent 3Arts Awardee in music, Bethany records and tours with Jon Langford and her EP "First" is available everywhere, with a new album on the way. @bethanyt80. BethanyThomasMusic.com.



Steve Watts,
Hedwig U/S

Previous Milwaukee credits include *Ragtime* and *I Love a Piano* at Milwaukee Rep and *Elf the Musical* (Santa) at First Stage. Regional/

international credits include *Annie* (Warbucks), *42nd Street* (Julian Marsh), *Thoroughly Modern Millie* (Trevor Graydon), *Barefoot in the Park* (Phone Repairman), *The Music Man* (Charlie Cowell), *A Midsummer*

Night's Dream (Oberon), *Macbeth* (Seyton) and numerous appearances as keyboardist/bandleader for the Fireside Theatre's popular annual live band revues. Thanks to family and friends for continued love and support.



Isabella Abel-Suarez,
Roadie

Isabella recently graduated from Southern Utah University with her BFA in theatre and a minor in dance performance.

At SUU, she played Alexi

Darling in (and was dance captain for) *Rent*, various roles in *The Laramie Project*, Bielke in *Fiddler on the Roof*, Veronica Sawyer in *Heathers* and Charles Guiteau in *Assassins*. She won acting awards for her work in *The Laramie Project* and *Assassins*. She spent an amazing summer at the Utah Shakespeare Festival where she was in the ensemble of *The Greenhouse* and Launcelot Gobbo in an acclaimed production of *The Merchant of Venice*. Isabella also works as Executive Assistant for StateraArts, an organization dedicated to bringing women+ into full and equal participation in the arts. She most recently played Consuela in The Rep's production of *West Side Story*. **Residency sponsored by Connie and John Kordsmeier.**



Lauryn Glenn,
Roadie

Lauryn is an actress, foodie and bookworm from Cleveland, Ohio. She has recently completed her BFA in Performance at Ohio University's

College of Fine Arts. She is ecstatic to be joining Milwaukee Rep for their 2019/20 Season! During her academic career at Ohio University, Lauryn played Holly in *Holly Down in Heaven*, #11 in *The Wolves*, Anita/Rita/Reporter #1 in *La Mujer Barbuda* (World Premiere) and Win/Waitress in *Top Girls*. Lauryn completed a summer internship with Tantrum Theater, during which she understudied Jen in *The Cake*. Lauryn thanks her family, friends and mentors for their endless love and continuous support!



Brooke Johnson,
Roadie

Brooke is excited to be making her debut with Milwaukee Rep this 2019/20 Season. She originally hails from the sunny central coast of

California and is a recent alum of The Pacific Conservatory Theatre's Professional Actor training program. Her most recent roles include: Ellen in *A Christmas Carol*, Estella in *West Side Story* (Milwaukee Rep), #11 in *The Wolves*, Woman #2/Lady Eugenia in *A Gentleman's Guide to Love and Murder*, Brave Girl/Mrs. Darling (u/s) in *Peter Pan*, Ancestor/ Swing in *The Addams Family*, Programmer in *The (curious case of the) Watson Intelligence* (PCPA). **Residency sponsored by David and Madeleine Lubar.**



Joshua Ponce,
Roadie

Joshua is stoked to be making his Milwaukee Rep debut in this exciting season! He is fresh off the plane from California, where he spent the last

two years with PCPA Theaterfest training and appearing in *Freaky Friday the Musical* (Ensemble), *A Gentleman's Guide to Love and Murder* (Ensemble), *Peter Pan* (Twin 1), *The Theory of Relativity* (Curtis) and *The Addams Family* (Matador Ancestor). Endless Thank You's to God, my family and friends for their love and support. www.joshuaponce.com



Gilberto Saenz,
Roadie

Gilberto is thrilled to be making his debut at Milwaukee Rep! Originally from Donna, Texas, Gilberto graduated with a B.A. in Theater

Studies from Yale University. Previous credits include Chuck Biggs in *She Kills Monsters* (Yale DRAMAT/Yale Rep); Prior Walter in *Angels in America*, Archie Nunn in *So, I Killed A Few People...* and Miguel de Cervantes/ Don Quixote in *Man of La Mancha*. Gilberto is an alumnus of the National Theatre Institute at the Eugene O'Neill

Theater Center (Theatermakers Ensemble, 2018). He is so thankful to continue telling stories—this time in Wisconsin!



Nadja Simmonds,
Roadie

Nadja is incredibly excited to join the Emerging Professional Residency for this 2019/20 Season! Originally hailing from

Cincinnati, Nadja moved

to Milwaukee and received her theater arts degree from Marquette University in 2018. Regional credits include *Mary Jane* (Forward Theater), *Romeo and Juliet* (Summit Players Theatre), *Boxcar and Muskie Love* (Northern Sky Theater) and *Locomotion* (First Stage). Favorite roles include Alex in *On the Verge*, Pilot in *Grounded*, Tommy in *Wine in the Wilderness* and Celia in *As You Like It*. She was last at Milwaukee Rep as Assistant Director for *Miss Bennet: Christmas at Pemberley*. Many thanks go to her amazingly supportive family, and to all the good dogs out there who keep showing her love. Enjoy this wonderful season! nadjasimmonds.com.



Austin Winter,
Roadie

Austin is happy to join Milwaukee Rep this season. Past credits include *Matilda*, *Romeo and Juliet* and *A Midnight Cry* (First Stage), *The*

Wiz, *Godspell* (Hope Summer Repertory Theater), *Chicago* (Broadway Theater Project) and *Seussical* (Carthage China Tour). Austin has originated roles in *A Seat at the Table* (by Regina Taylor), *The Breath of Stars* (by Caridad Svich) and *Wherever You've Been* (by Caitlin DiGiacomo). Austin is a proud graduate of Carthage College and The Open Jar Residency in New York. Off the stage, he is a costume designer and a multimedia studio artist. Love and thanks to mom and dad. [@austwintermint 1Jn4:18](http://www.austinwinter.com). **Residency sponsored by Four Four Foundation.**

CREATIVE TEAM BIOGRAPHIES

John Cameron Mitchell, *Playwright*

John Cameron Mitchell's *Hedwig and the Angry Inch*, written with Stephen Trask, made its debut on the stage of Squeezebox, a New York City rock'n'roll drag bar. The show then premiered Off-Broadway, receiving rave reviews. He was awarded an Obie Award, a "New York Magazine" Award, a Drama League Award and the Outer Critics Circle Award for Outstanding Off-Broadway Musical. John's film adaptation of *Hedwig and the Angry Inch* received directing and acting awards at festivals such as Sundance (Audience Award, Best Director), Berlin, Deauville, Seattle International, San Francisco International and San Francisco's Lesbian & Gay. The film was also honored by the National Board of Review, The L.A. Film Critics Association, "Premiere Magazine" and the Golden Globes (Nomination: Best Performance by an Actor in a Motion Picture - Musical or Comedy). He has received a Drama Desk Award Nomination for his role of Dickon in the Broadway production of *The Secret Garden*. Off-Broadway, Mitchell received an Obie Award and a Drama Desk Award Nomination for his role of Larry Kramer in *The Destiny of Me*. In Lincoln Center's *Hello Again*, Mitchell received a Drama Desk Nomination. He also appeared in the original Broadway production of *Six Degrees of Separation* and as Huck Finn in the Broadway production of *Big River*. Mitchell adapted and directed Tennessee Williams' *Kingdom of Earth* for New York's Drama Dept. Theatre Company, of which he is a founding member.

Stephen Trask, *Music and Lyrics*

Stephen Trask is the author of the music and lyrics for *Hedwig and the Angry Inch*. He was the original leader of the notorious Squeeze Box house band. During his time there as Music Director he performed with Debbie Harry, Lene Lovitch, Hole, Green Day, Joey Ramone, as well as New York's most popular drag queens. For five years Stephen performed with his band, Cheater, who originated the role of "The Angry Inch" Off-Broadway and performed on the original cast recording. From 1993-1998, Stephen danced with and accompanied The Corner Store Dance Company. He has scored

numerous dance pieces and movies. During *Hedwig*'s reign at the Jane Street Theatre, Stephen received an Obie Award, the Outer Critics Circle Award for Outstanding Off-Broadway Musical, a 1998 "New York Magazine" Award, Drama Desk nominations for Outstanding Music, Outstanding Lyrics and Outstanding New Musical, a Grammy Nomination for Best Cast Album and two GLAMA Awards: Best Cast Album and Best Score for Film or Stage. He was the producer for the album for the rock band Nancy Boy, as well as the score and soundtrack album for the film version of *Hedwig and the Angry Inch*. He also composed the music for the New York Theatre Workshop production of *Cavedweller*, adapted from Dorothy Allison's novel and works regularly in the film world supplying the original score for "Camp," "The Station Agent" and "The West Memphis Three."



Mark Clements, *Director*

Mark is an award-winning international theater director whose work has appeared in over 100 major theaters throughout Europe and

the United States. He began his tenure as Artistic Director with the 2010/11 Season by bringing musicals to the mainstage, starting a tradition that is now the highlight of every season, including *Cabaret*, *Next To Normal*, *Assassins*, *Ragtime*, *Dreamgirls*, *The Color Purple*, *Man of La Mancha*, *Guys and Dolls*, *In the Heights* and *West Side Story*. Milwaukee Rep directing credits include the world premieres of *One House Over*, his own adaptation of the current *A Christmas Carol*, *Five Presidents* and *American Song*. Also directed for Milwaukee Rep: *Things I Know To Be True* (American Premiere), *Junk*, *The Glass Menagerie*, *Of Mice and Men*, *Othello*, *Death of a Salesman*, *The History of Involuntability*, *End of the Rainbow*, *Clybourne Park* and *Bombshells*. Some of his New York and international work includes *Speaking in Tongues*, *The Milliner* and *Blunt Speaking*, in addition to creating and directing the West End and UK National Tour of *Soul Train*. Prior to joining The Rep, Mark served as an Associate Artistic Director for several UK theater companies, most notably, Artistic

Director for the award-winning Derby Playhouse in the UK from 1992 - 2002, where he directed over 40 productions. He has been nominated for an Olivier Award and several UK Theatre Awards, and has won three Barrymore Awards from his time at Walnut Street Theatre in Philadelphia. He currently serves on the National Advisory Board for the Lunt-Fontanne Fellowship Program at Ten Chimneys. Mark is currently working with Ayad Akhtar on adapting his critically acclaimed novel *American Dervish* for the stage to make its world premiere at Milwaukee Rep in an upcoming season.

Dan Kazemi,
Music Director

Dan is a New York-based composer, actor, director, orchestrator and music director. He is an Associate Artist at Milwaukee Rep. He most recently directed *Ring of Fire: The Music of Johnny Cash* at The Rep's Stackner Cabaret and Actors Theatre of Louisville. His recent musical direction credits for Milwaukee Rep include *A Christmas Carol*, *Nonsense*, *West Side Story*, *In the Heights*, *The All Night Strut!*, *Murder for Two*, *Guys and Dolls*, *Man of La Mancha* and *Dreamgirls*. In Philadelphia, Dan musically directed *Lizzie* (Barrymore Award), *Herringbone* (Barrymore Nom) and orchestrated and musically directed the world premiere musicals *Field Hockey Hot* (Barrymore Nom) and *Tulipomania*. Dan's music has been performed at Lincoln Center's American Songbook Series, SDC's Mr. Abbott Awards, Le Cirque de Demain in Paris, Ballet Fleming and in the 213 collective's *Untitled Project #213*. Dan is also the composer of a new musical, *The Tapioca Miracle*.

Scott Davis,
Scenic Designer

Scott Davis is an award-winning freelance scenic designer. Most recently he was the production designer for *Disney On Ice: Road Trip Adventures* and designed *Dolly Parton's Smoky Mountain Christmas Carol* at the Emerson Colonial in Boston. Off-Broadway he designed *Ride the Cyclone* at MCC Theater Company and *Othello: The Remix* at the Westside Theatre. He has also worked with the Alliance Theatre, Chicago Shakespeare Theater, Asolo Repertory Theatre, Signature Theatre, Steppenwolf Theatre Company,

Milwaukee Repertory Theater, Court Theatre, Paramount Theatre, Children's Theatre Company, Writers Theatre, Drury Lane Theatre, American Theater Company, Walnut Street Theatre, Marriott Theatre, Getty Villa, Arizona Theatre Company, Utah Shakespeare Festival, Northlight Theatre. Internationally his work has been seen at Shakespeare's Globe, Unicorn Theatre (London), the Neuss (Germany), the Market Theatre (South Africa), Gdansk Shakespeare Theatre (Poland), the Cultch (Vancouver), DUCTAC Theatre (Dubai) and the Edinburgh Festival (Scotland). He is the co-founder of the Chicago-based design firm Brass Ink. www.scottadamdavis.com

Mieka van der Ploeg,
Costume Designer

Credits include designs with Chicago Shakespeare Theater, Steppenwolf, Court Theatre, Writers Theatre, Lyric Opera Unlimited, Milwaukee Repertory Theater, Lookingglass Theatre, Paramount Theatre, Marriott Theatre, Remy Bumppo, Second City, Redmoon, The Hypocrites, Chicago Children's Theatre, About Face Theatre, Steep Theatre, Theater Wit, Albany Park Theater Project and Manual Cinema. She is a member of USA829. www.miekavanderploeg.com

Jason Fassl,
Lighting Designer

This production marks Jason's 26th Milwaukee Rep production including *American Song*, *The Amish Project*, *Guys and Dolls* and most recently *Every Brilliant Thing*. Over the last decade, Mr. Fassl has consumed mass quantities of electricity at American Players Theatre, Milwaukee Ballet, Milwaukee Repertory Theater, First Stage, Peninsula Players, Milwaukee Opera Theatre, Renaissance Theaterworks, Milwaukee Chamber Theatre, Next Act Theatre, Forward Theater Company and many others. Jason is a member of United Scenic Artists Local#829, the Milwaukee Stage Hands Local#18 and a UW-Stevens Point Alumnus. Portfolio and information at www.AntiShadows.com

Barry G. Funderburg,
Sound Designer

Barry is excited to return for his 81st Rep production. Memorable productions include *Guards at the Taj*, *Our Town*, *Dreamgirls*, *Othello*, *The Seafarer*, *Pride and Prejudice*, *Mary Stuart* and *Angels in America*. Off-Broadway: *Wittenberg* at the Pearl Theatre Company. Regional theatre: Steppenwolf Theatre, Utah Shakespeare Festival, Alley Theatre, Kansas City Rep, Repertory Theatre of St. Louis, Arizona Theatre Company, Actors Theatre of Louisville, Baltimore Center Stage, Great Lakes Theater, Idaho Shakespeare Festival, Peninsula Players, American Players Theatre, Indiana Rep and others. Barry has received two Chicago Equity Jeff Awards, a St. Louis Theater Circle Award and an MFA in sound design from Purdue University.

Mike Tutaj,
Projection Designer

Mike joins Milwaukee Rep having previously designed projections for *Holmes & Watson*. Based in Chicago, Mike has designed projections for theatre and live performance for over 15 years. Chicago credits include productions with: Chicago Shakespeare Theater, Goodman, Steppenwolf, Court Theatre, Lookingglass Theatre, Writers Theatre, Chicago Symphony Orchestra, Second City and many others both local and regional. He is the recipient of four Joseph Jefferson Awards, a Suzi Bass Award and received the Michael Maggio Emerging Designer Award. He is an artistic associate with TimeLine Theatre and teaches projection design at Columbia College, Chicago. www.miketutaj.com

Erin Kilmurray,
Movement Designer

Erin is thrilled to be at Milwaukee Rep for the first time. Kilmurray shifts within contemporary dance, devised live performance and theater. Her theater credits include Court Theatre, Chicago Shakespeare, About Face Theatre, Hypocrites, Northwestern University and The Inconvenience. Her independent work has been presented by Museum of Contemporary Art, Dance Center of Columbia College, Thalia Hall, Links Hall,

Pivot Arts Festival, ArtTheater dB Kobe (Japan) and supported through Chicago Dancemakers Forum, 3Arts, CCT Young Leaders Fund, High Concept Labs, The University of Chicago. Kilmurray is the creator of *The Fly Honey Show*, named "a Chicago Institution" (Chicago Reader) and she was named a "Leader of Chicago Culture 2020" (Newcity Stage). www.erinkilmurray.com

Clare Arena Haden,
Voice & Text Director

This is Clare's ninth production with Milwaukee Rep after dialect coaching *Guys and Dolls*, *Holmes and Watson*, *One House Over*, *Songs for Nobodies*, *Junk*, *The Chinese Lady*, *The Nerd* and *The Legend of Georgia McBride*. She received her MFA in acting with an emphasis in voice and speech from UW-Madison. She has since worked as a professional actor, voice and speech coach, and teaching artist for Forward Theater, Theatre LILA, Milwaukee Chamber Theatre, First Stage, Renaissance Theaterworks, Children's Theater of Madison and American Players Theatre. Clare currently works for the School of Nursing at UW using actor-training techniques to improve communication and is a proud member of AEA, VASTA, and TESOL.

Frank Honts,
Casting Director

Frank is Director of Artistic Personnel at Milwaukee Rep. Prior to joining The Rep staff in 2016, Frank worked at a number of regional theaters, including Utah Shakespeare Festival, Renaissance Theaterworks, The Goodman, California Shakespeare Theater, A Contemporary Theatre (Seattle), and Paramount Theatre. He has worked extensively as both a director and dramaturg, and was honored to be a directing resident at Milwaukee Rep in the 2013/14 Season. Frank spent two seasons as Artistic Associate at Forward Theater Company in Madison, and he was the inaugural recipient of the Michael Flachmann Fellowship at Utah Shakespeare Festival. He is a graduate of Brown University in Providence, Rhode Island. Frank would like to thank Casting Assistants Thaddeus Kaszuba, Dylan Sladky and Sara Zientek, whose dedicated efforts have helped make this season possible.

David Hartig, *Stage Manager*

David is excited to be back at Milwaukee Rep where he was a former intern/apprentice from 2010-12. He has also worked on several productions for American Players Theatre, ACT Theatre Seattle, Seattle Rep, Seattle Shakespeare Company, Seattle Children's Theatre and Eugene Ballet. David currently lives minimally out of a backpack and small carry-on bag and travels the world during his downtime. Thanks for coming out to support the arts!

Josh Hart, *Stage Management Fellow*

Josh is delighted to return to Milwaukee Rep as the Stage Management Fellow this season. Last season as a Stage Management Resident he worked on a variety of shows, including *In the Heights*, *A Christmas Carol*, *The Chinese Lady* and *Rep Lab*. Before coming to Milwaukee, he attended the University of Chicago, where he stage managed such shows as *Peter and the*

Starcatcher, *For Colored Girls Who Have Considered Suicide When the Rainbow Is Enuf* and a burlesque-inspired circus showcase.

Kelsey Robins, *Assistant Director*

Kelsey is a recent graduate of Northwestern University, where she majored in Theatre and Legal Studies and minored in Comparative Literature. Directing highlights included *Cabaret*, *Ghost Quartet* and an all-female production of *1776*. She also served as the Executive Director of Northwestern's classic and classically inspired theatre group, *Lovers & Madmen*. As an Assistant Director, Kelsey has worked on *A Christmas Carol*, *Nunsense*, *The Niceties*, *2 Pianos 4 Hands* (Milwaukee Rep); *King Lear*, *All's Well That Ends Well* (Hip to Hip); *A Chorus Line*, *Vinegar Tom* (Northwestern University); and as Assistant to the Director on *The Music Man* (Goodman Theatre, dir. Mary Zimmerman). You can check out her work at kelseyrobins.com



**In the right hands
this blender becomes
a time machine.**

Our all-natural smoothies and juices
will take you on a trip...
back to when food was, well, food.



OUTPOST
NATURAL FOODS

4 stores in greater Milwaukee to serve you. Visit www.outpost.coop for info.

Something New Is On The Horizon

- Spectacular apartment homes still available -



The best in retirement living includes...

- A culturally respectful and intellectually stimulating community
- LifeStreams - our holistic person-centered approach to wellness
- A 67,000 sq ft Town Center

Call 414-831-7300 today!

LOOKING
BACK ON
150
YEARS
OF LOOKING
FORWARD

SAINT JOHN'S
ON THE LAKE

www.SaintJohnsMilw.org 414-831-7300
1840 North Prospect Avenue, Milwaukee

Taking better care of yourself starts with finding the best doctors *to take care of you.*

INTERNAL MEDICINE



Kathleen Baugrud, M.D.



John Betz, M.D.



Matthew Connolly, M.D.



Kevin DiNapoli, M.D.



Deidre Faust, M.D.



Maria Ignacio Vitug, M.D.



Scott Jorgensen, M.D.



Unchu Ko, M.D.



David Lucke, M.D.



Rachel Oosterbaan, M.D.



John Sandidas, M.D.



Abraham Varghese, M.D.



James Volberding, M.D.



Daniel Butz, M.D.



Richard Cattey, M.D.



Jasna Coralic, M.D.

SURGERY

GASTROENTEROLOGY



Alyandra Lal, M.D.



Joseph Regan, M.D.



Craig Siverhus, M.D.



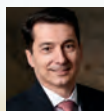
Vincents Dindzans, M.D.



Drew Elgin, M.D.



Vijay Khiani, M.D.



Venelin Kounnev, M.D.



Srihari Ramanujam, M.D.

UROLOGY



Jeffrey Schenck, M.D.



Chad Stepke, M.D.



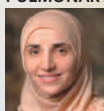
Kevin Gee, M.D.



Christopher Kearns, M.D.



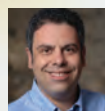
Peter Slocum, M.D.



Dima Adl, M.D.

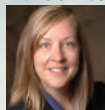


Jay Balachandran, M.D.



Burak Gurses, M.D.

ENDOCRINOLOGY



Amy DeGueme, M.D.



Elaine Drobny, M.D.



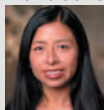
Antoni Gofron, M.D.



Brent Jones, M.D.



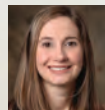
Kawaljeet Kaur, M.D., M.S.



Carmen Balding, M.D.



Manish Gharia, M.D.

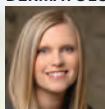


Camille Hessel, M.D.

MOHS SURGERY



DERMATOLOGY



Amanda Cooper, M.D.



Tracy Donahue, M.D.



Valerie Lyon, M.D.



Jack Maloney, M.D.



Jason Rosenberg, M.D.



Debra Scarlett, M.D.



Thorstein Skulason, M.D.



Heather Wells, M.D.

COMPREHENSIVE EYE CARE



Lisa Bennett, M.D.



Thomas Bloom, M.D.



Kenneth Fabric, M.D.



James Ivanoski, O.D.



Martha Jay, M.D.



Fred Shalfrin, M.D.



Anne Lent, M.D.



Kristin Schroeder, M.D.

ALLERGY & IMMUNOLOGY

When it comes to healthcare, you shouldn't settle for anything less than the perfect fit.

You need physicians who are engaged. Who listen. Who spend time with you. We want to make a difference in your life, and the lives of your family.

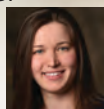
OBSTETRICS & GYNECOLOGY



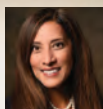
Jonathan Berkoff, M.D.



Patricia Dolhun, M.D.



Katya Frantskevich, M.D.



Shireen Jayne, D.O.



Jennifer Morales, M.D.



MADISON MEDICAL
MILWAUKEE • MEQUON

MadisonMedical.com | 414.272.8950

EAST RESIDENCE INDEPENDENT LIVING



Our new distinctive East Residence
Independent Living is selling out fast!
Call us to explore the vibrant lifestyle possibilities at
St. Camillus and to reserve your apartment.

CONSTRUCTION HAS STARTED!

**St. Camillus**

A Life Plan Community

414.259.6310

10200 W. Bluemound Rd. • Wauwatosa, WI 53226

Maxwell Emmet,
Guitar

Maxwell has been performing original music in Milwaukee since the age of 16. Currently, he is the guitarist in Milwaukee's premier glam-rock band, Tigernite, who have toured the US, performed hundreds of shows at venues from Pridefest to The Rave and are regularly featured on radio stations such as Radio Milwaukee and WMSE Frontier Radio. As a member of the award-winning Milwaukee band, Revolush, he has also performed at Skylight Music Theatre. Maxwell is thrilled to be making his musical theater debut in *Hedwig*.

Tommy Hahn,
Bass

Tommy was last seen as Paco in Milwaukee Rep's production of *Man of La Mancha*. Regional credits: Skylight Music Theatre (*Rent*, *Les Misérables*, *The Music Man*), Marriott Theatre in Lincolnshire (*Phantom*, *Miss Saigon*, *Evita*), Fireside Theatre (*Pump Boys and Dinettes*), Rochester Civic Theatre (*Jesus Christ Superstar*). Tommy was the lead singer/bass of the award-winning Milwaukee band, Revolush, and also created the role of Tank Turret in the World Premiere of *Dee Snider's Rock & Roll Christmas Tale* for the Broadway in Chicago series.

Patrick Morrow,
Drums

Patrick is excited to be a member of The Angry Inch. This is his first time playing the Stiemke, but has done a dozen other shows around the building. In addition to being an Inch, Patrick has also been a Blue Ribbon Boy, a Fly-Rite Boy, a Fairville Renegade, a Commercialist, a Door Stopper, a Late Nite Bait, a Bellfurie, a Reluctant Aquanaut, a Jaguar, a Two Timer, an Electric Buffet, an Essential, a Trolley and lots of other stuff. Lisa, I hope you like this one.



Chad Bauman,
Executive Director

Appointed in 2013, Chad is now in his seventh Season at Milwaukee Rep. Under his guidance, the theater has grown significantly from a \$9M organization

to a \$13M organization. He's completed two capital campaigns, one to remodel and expand the Stackner Cabaret and the other to build the endowment, launch the John (Jack) D. Lewis New Play Development Program, create a new *A Christmas Carol* and deepen the theater's community engagement programs. Through his efforts, the theater has been awarded UPAF's Good Steward Award four out of the last six years and became the only performing arts organization in Wisconsin with a 4 star rating from Charity Navigator. Before moving to Milwaukee, he was the Associate Executive Director at Arena Stage in Washington, DC, where he was instrumental in opening the Mead Center for American Theater, a 200,000 square feet, three theater performing arts complex dedicated to American voices and playwrights. While at Arena Stage, he worked on the Broadway transfers of *Next to Normal* (Pulitzer Prize; Tony Award), *Who's Afraid of Virginia Woolf?* (Tony Award), *Wishful Drinking* starring Carrie Fisher, *Looped* starring Valerie Harper, and John Grisham's *A Time to Kill* in addition to the world premieres of Marcus Gardley's *Every Tongue Confess* starring Phylicia Rashad and *Red Hot Patriot* starring Kathleen Turner. He has been named to Milwaukee Business Journal's Top 40 under 40 and a "Friend of the Hispanic Community" by the United Community Center. He currently serves as the President of the Milwaukee Arts Partners, Vice President of the Board of Pathways High School, Chair of the Finance Committee of ImagineMKE, and Coordinator for Equity, Diversity & Inclusion for AFS Student Exchange Programs. Bauman is a graduate of Harvard Business School's Strategic Perspectives in Non-Profit Management program and has a Master of Fine Arts in producing from the CalArts. He and his husband Justin live in Whitefish Bay and have been host parents to AFS Exchange Students from Norway and Germany.

MILWAUKEE REPERTORY THEATER STAFF

Mark Clements
ARTISTIC DIRECTOR

Chad Bauman
EXECUTIVE DIRECTOR

ADMINISTRATION

Managing Director.....Melissa Vartanian-Mikaelian
General Manager..... Jennifer Smith
HR Manager.....Emily Hill
Company Manager..... Josh Segal
Management Assistant.....Amaris Bates
Receptionists.....Michael Evans,
Claudine Jackson, Thaddeus Kaszuba,
Campbell Martinez, Mary Muehleisen,
Andrea Roades-Bruss, Amelia Strahan

ARTISTIC

Associate Artistic Director.....May Adrales
Artistic Producer..... Laura Braza
Director of Artistic Personnel..... Frank Honts
Literary Manager..... Deanie Vallone
Manager of Artistic Training..... Lina Chambers
Artistic Administrator.....Dylan K. Sladky
Casting Resident.....Thaddeus Kaszuba

ASSOCIATE ARTISTS

Ayad Akhtar (Playwright), Lee E. Ernst (Actor), Laura
Gordon (Actor/Director), Angela Iannone (Actor), Todd
Edward Ivins (Scenic and Costume Designer), Dan
Kazemi (Composer/Musician), Marc Kudisch (Actor),
Reese Madigan (Actor), Jeff Nellis (Lighting Designer),
James Pickering (Actor), Aaron Posner (Director), Todd
Rosenthal (Scenic Designer), Eric Simonson (Director/
Playwright), Lindsay Smiling (Actor), Deborah Staples
(Actor), Nathaniel Stampley (Actor), John Tanner
(Composer/Musician)

COMMUNITY ENGAGEMENT

Director of Community Engagement.....Leah Harris
Manager of Community Engagement.....Erick Ledesma
Public Allies AmeriCorps Apprentice..... Yeyliz Martinez

DEVELOPMENT

Chief Development Officer.....Chuck Rozewicz
Director of Development.....Amy Dorman
Major Gifts Officer.....Alli Engelsma-Mosser
Associate Director of Development,
Events & Stewardship.....Morgen Clarey
Associate Director of Development,
Institutional Giving.....Cassidy Skoriya
Development Database Manager.....Stephan Thomas

EDUCATION

Director of Education..... Jenny Toutant
Education Manager.....Jeffrey Mosser
Education Administrator..... Auburn Matson
Schools Program Coordinator.....Joshua Pohja
Education Resident.....Denzel Taylor

Teaching Artists..... Amira Adams, Danielle Adisi,
Thomas Adisi, Maura Atwood,
Leatanya Dunn, Allen Edge,
Tessa Goulías, Luther Hall,
Kate Henderson, Van Johnson III,
Ashley Jordan, Morgan Jo Karl,
Josh Krause, Becca Marten,
Ken Miller, Hope Parow,
Abbey Pitchford, Brandi Reed,
Tony Roman

FINANCE

Chief Financial Officer..... Mark Wyss
Senior Accountant.....Derrick Dickinson
Accounting Associate.....James Kaplan
Accounting Associate.....Cristina Hughes

MAINTENANCE

Chief Building Engineer..... Rob Lininger
Engineers..... Todd Ross, Maurice Goodwin
Part-Time Engineers.....Yuselff Dismukes,
Ray Herrera, A.J. King



First Unitarian
SOCIETY OF MILWAUKEE
nurture. engage. inspire.

We are a spiritual community
welcoming people of all genders,
sexualities, ages, races, ethnicities,
histories, and bodies.

Join us for Sunday services at
9:00 a.m. & 11:00 a.m.

1342 North Astor Street, Milwaukee | uumilwaukee.org

MILWAUKEE REPERTORY THEATER STAFF CONT.

MARKETING & STACKNER CABARET

Chief Marketing Officer.....Lisa Fulton
 Director of Marketing.....Cara McMullin
 Marketing Manager.....Eliana Reed
 Graphic Designers.....Marty Baragiola,
 Benton Melbourne, Geoffrey Vitiello
 Photographer.....Michael Brosilow

Sales & Audience Services

Director of Sales.....Jeremy Scott
 Associate Director of Sales.....Jaime Lacy
 Group Sales Manager.....J.G. Decker, Joyce Hanin
 Audience Services Manager.....Rachel Poston
 Audience Services Representatives.....Emily Amborn
 Bobby Boada, Samantha Gill,
 Daniel Hanley, Colleen Hayes,
 Savion Kirk, Zachary Dean Lachowicz,
 Emily Lange, Jenna Lassila,
 Katie Maas, Johnell Major-Wesley,
 Elisabeth Markman, Olivia Mauseth,
 Julie Meadows, Alexis Moore,
 Jackie Stengel, Lexi Such, Brittany Vinz

Media

Director of Media Relations.....Frances White
 PR Manager.....Laura Ellingen

House Operations

Front of House Operations Manager.....Jamie Ziolkowski
 Senior House Manager.....Aaron Suggs
 House Managers.....Bailey Kissack,
 Maranda Moton-Weston,
 Zach Ursem, Jacob Whalen,
 Max Wilson
 Concierge/Gift Shop Associates.....Becky Demler,
 Cionna Dorsey-Satchell, Adrienne Essex,
 Sara Hagen, Maranda Moton-Weston

Stackner Cabaret Restaurant

Executive Chef.....Chris Feldmann
 Operations Manager.....Donald Parsons
 Inventory & Events Manager.....Claire Rydzik
 Assistant Manager.....Darian Emerson
 Bar Manager.....James Passow
 Cabaret Staff.....Jacob Abrams, Aaron Ausberry,
 Kathleen Borchardt, Mariah Custalow,
 Dylan Damkoehler, Roger Deschler,
 Kevin Diaz, Allison Frey,
 Madison Geszvain, Quincy Hardin, Tanya Hayes,
 Kelly Heimann, Nicholas Jemison,
 Hannah Johnson, Troy Key,
 Regina Laberge, Frenisha Lathan,
 Angela Livermore, Sara Longley,
 James Muehleisen, Mary Muehleisen,
 Olivia Passow, Amber Rydzik, Kristin Rydzik,
 Mia Schultz, Ty Scott, Mary Sibilski,
 Daniel Soto, Crystal Thompson,
 Boa Vang-Hawkins, Princessa Valdez,
 Lucy Vang, Charles Wallace, Odell White

PRODUCTION

Director of Production.....Jared Clarkin
 Associate Production Manager.....Kaitlyn Anderson
 Assistant Production Manager.....Maram Samaha

Costumes

Costume Director.....Nicholas Hartman
 Assistant Costume Director.....Katharine Engelen
 Costume Shop Design Assistant.....Madeline Corson
 Senior Draper.....Alexander B. Tecoma
 Tailor.....Jef Ouwens
 First Hand.....Jessica H. Jaeger
 First Hand.....Leslie Vaglica
 Costume Crafts Artisan.....Haley Jaeger
 Stitchers.....Katie Leonard, Carol Ross
 Costume Construction Resident.....Veronica Vickas
 Wig Master.....Emily Christoffersen
 Stylist.....Kevin McElroy, Robert Laurence Studio
 Wardrobe Supervisor.....Robert T. Sharon
 Wardrobe Resident.....Elizabeth Gerwick
 Wardrobe.....Kathleen Rock, Eric Welch

Lighting & Video

Lighting and Video Director.....Aaron Lichamer
 Assistant Lighting Design Resident.....Olivia DeLuca
 Electrician Resident.....Sage Weber-Shirk
 Spot Operator.....Caleb Woodring

Sound

Sound Director.....J Jumbelic

Props

Properties Director.....Jim Guy
 Props Crafts Artisan.....Carly Anders, Tayler Varney
 Soft Props Artisan.....Jennifer M. Higgins
 Props Carpenter/Artisan.....Erik Lindquist
 Prop Graphics Artist.....Mindy Knoll

Scenic

Co-Technical Director.....John Houtler-McCoy
 Co-Technical Director.....Sean Walters
 Asst. Technical Director.....Danny Halminiak
 TD Apprentice.....Joseph Fry
 Charge Scenic Artist.....Jim Medved
 Lead Scenic Artist.....Shannon Mann
 Scenic Artist.....Chrissy Piontek
 Assistant Stagehand.....Caleb Woodring
 Painter.....Amy Larink Runquist

Stage Management

Production Stage Manager.....Kimberly Carolus
 Stage Managers.....Richelle Harrington Calin,
 David Hartig, Martie Barthel, Tara Kelly,
 Rebecca Lindsey, Kira Neighbors, Kate Ocker,
 Brooke Redler, Sara Sheets, Emily Wright
 Stage Management Fellow.....Josh Hart
 Stage Management Residents.....Abbi Hess,
 Krista Kanderski

Resident Stagehands & Carpenters

Bill Burgardt, Erin Collopy, Steve Gillingham,
 Rick Grilli, Aaron Siegmann, Joe Pearson,
 Andrew Sours, Jim Zinky

MILWAUKEE REPERTORY THEATER BOARD OF TRUSTEES

President
Gregory C. Oberland

Vice President, Development
Gina Peter

Vice President, Trustees and President-Elect
Catherine Robinson

Secretary
Bladen Burns

Treasurer
James Phillips

At Large
Warren Buliox

At Large
Judy Hansen

At Large
Robert H. Manegold

At Large
Linda Marcus

TRUSTEES

Ayad Akhtar
Matt Bartel
Ivor Benjamin
Wendy W. Blumenthal
Melanie Booth
Michael Carter
Jane Chernof
Marybeth Cottrill
Amy Croen
Robert H. Duffy
Molly Kubly Fritz
Andres Gonzalez
William Guc
John Halechko
Bryan House
John Hunzinger, P.E.
Tom Irgens
Lynda Johnson
Bradley J. Kalschauer
David Kundert
Phoebe Lewis
Joan Lubar
Kristine Lueders
Mark Niedfeldt, M.D.
Adam Peck
James Phelps
Joe Pickart
Karen Plunkett
Caran Quadracci
Christopher Rowland
Craig Swan
Deborah Tomczyk
Nicholas Wahl

FRIENDS OF THE REP BOARD

President
Steph O'Connor

Immediate Past President
Aileen Smith

VP External Affairs
Melita Biese

VP Fundraising
Terry Sutter

VP Internal Services
Susan Herro

Secretary
Erin Burgess

Treasurer
Jim Mergener

Members

Terry Bell
Cathy Jakicic
Jaclyn Jecha
Janet Kaldhusdal
Drew Martin
Emily McKeown
Vic Passante
Suzanne Powell
Craig Warnecke
Karen Weinberg
Les Wilson

SUSTAINING TRUSTEES

These former Rep Trustees continue their engagement through performance attendance, a minimum annual contribution of \$250, and/or potential membership in the Limelight Legacy Society.

Richard Abdo	Kathleen Gray	Tonen (Sara) O'Connor
Joaquin Altoro	Edward T. Hashek	Elaine N. Peterson
Patsy Aster	Jill Heavenrich	Anthony Petullo
Jay Baker	Jacqueline Herd-Barber	Gwen Plunkett
Katharine Banzhaf	Peter Hotz	Elizabeth Quadracci-Harned
James E. Braza	Janet Hume	Kristine Rappé
Joyce G. Broan	Stephen Isaacson	Dr. John E. Ridley
John Crichton	Judy Jorgensen	Allen N. Rieselbach
Danny Cunningham	J. Patrick Keyes	Joseph A. Rock
Karen Dean	John Kordsmeier	Darlene Rose
Mark J. Diliberti	Frank Krejci	Micky Sadoff
George A. Dionisopoulos	Arthur J. Laskin	Joseph Schlidt
Robert Dye	James LaVelle	James Schloemer
Norman Dyer	David J. Lubar	Thomas Scrivner
Stephen Einhorn	Marianne Lubar	Edward Seaberg
James D. Ericson	Susan Lueger	Brenda Skelton
Susan Esslinger	Audrey A. Mann	Patrick Smith
Robert Feitler	Vince Martin	Robert Taylor
David Fleck	Patti Brash McKeithan	Renee Tyson
Timothy C. Frautschi	Venora McKinney	Stephen VanderBloemen
Ann Gallagher	Sandra McSweeney	W. Kent Velde
Patrick Gallagher	Richard Meeusen	Karin Werner
Connie Gavin	Donna Meyer	Stacy Williams
Katherine M. Gehl	Douglas Mickelson	Andrew Ziegler
Cecilia Gilbert	Dwight L. Morgan	
Anne Gimbel	Abigail J. Nash	

PRESIDENTS' COUNCIL

James Braza	John L. Kordsmeier	Patricia Brash McKeithan
Joyce Broan	Frank Krejci	Donna Meyer
Judy Hansen	Susan A. Lueger	Gregory C. Oberland
Jacqueline Herd-Barber	Robert H. Manegold	Edward Seaberg
Larry Jost	Vincent L. Martin	W. Kent Velde

LIMELIGHT LEGACY SOCIETY MEMBERS

The Limelight Legacy Society is a group of visionary donors who support Milwaukee Rep through a planned gift.

New members as of May 1, 2019 are in bold.

If you want to learn more about membership opportunities and benefits, please contact
Alli Engelsma-Mosser at 414-290-5366 or Aengelsma-mosser@milwaukeeerep.com.

George R. Affeldt, Jr.	James and Ellen Flesch	Vivian Moller
Sharee Allain and David Schertz	Deborah Fugenschuh and Mark Hinchey	Bob and Jan Montgomery
Gerald and Gail Baccetti	Bill and Susanne Gay	Charles and Barbara Murphy
Bob Balderson	Jeff Glock and Jane Reilly	Greg and Rhonda Oberland
John and Carol Bannen	Sara L. Grotenrath and James Pech	Gwen Ellen Owens
Katharine Banzhaf	Delphine Gurzynski	Elaine N. Peterson
Brian and Rebekah Barsch	Richard and Susan Hackl	Gwen Plunkett
Adam and Megan Bauman	Sybil Hamilton	Ronald and Barbara Poe
Chad Bauman and Justin Dunleavy	Arlene Hansen	Milan Racic
Mark and Victoria Benskin	Judy Hansen	David and Pat Rierson
Mark Biehl	Leland Hansen	Sara Risley
Ralph Bielenberg	Edward Hashek and John Jors	Gayle Rosemann and Paul McElwee
Melita Biese	Dr. Lawrence Howards	Ed Seaberg and Patrick Smith
Joyce G. Broan	Janet Kellogg Hume	Roger and Margery Senn
Mark E. Carstensen and Mary M. Horton	Cathy Jakicic	Brenda Skelton and Jim Bendtsen
Jane and Stephen Chernof	Deb and Peter Johnson	Aileen M. Smith
Mark Clements and Kelley Faulkner	Bradley J. Kalscheur	Terry R. Sutter
Chris and Judi Collins	Richard and Diane Kane	John and Kine Torinus
Diane Dalton	Margaret Knitter	Harry and Mary Beth Van Groll
Randall Daut and Patricia Ryan	Christine Krause	Judy Van Till
Susan and Bill Dawicke	David and Camille Kundert	Paul Vandeveld
Robert and Karen Dean	Sandra L. Laedtke	Kent and Marcia Velde
Carol Z. Dolphin	James and Mary LaVelle	Greg and Jodi Wait
Rosemarie Eierman	Mr. and Mrs. Llewellyn E. Licht	David and Cheryl Walker
Roma Eiseman	Robert and Susan Lueger	Barbara Wesener
Don Ellingsen	Carol and Rob Manegold	Stacy and Blair Williams
Susan and Gee Esslinger	Jim and Sally Mergener	Paul and Sandy Wysocki
David and Janet Fleck	Anthony and Donna Meyer	

BE TRUE TO YOURSELF

SUPPORT MILWAUKEE REP YOUR WAY

CASH

Whether you give through the mail, over the phone, or online, this is the quickest way to make an immediate impact.

REPRISE

Give a little every month and still take advantage of our exclusive donor benefits.

DONOR ADVISED FUND

This is a tax-wise way to maintain your support on an annual basis.

STOCK

Put those great returns to even greater use.

IRA DISTRIBUTION

For those 70 and older, avoid paying taxes on your mandatory IRA distributions.

PLANNED GIVING

Designate Milwaukee Rep as a beneficiary of your estate, life insurance, or retirement plan.



414-290-5376

www.MilwaukeeRep.com

2019/20 DONORS

The following list represents organizations and individuals who have made a cumulative contribution of \$250 or more to the Annual Fund, Curtain Call Ball Paddle Appeal donations and Corporate Sponsorships, Created in Milwaukee Campaign, and Stackner Campaign between **November 2, 2018 – January 2, 2020**. For a complete list of all our supporters, please visit www.milwaukeekeerep.com.

Corporation, Foundation and Government Giving

\$1 million +

United Performing Arts Fund (UPAF)

\$100,000 – \$999,999

The Lynde and Harry Bradley Foundation
Herzfeld Foundation
Shubert Foundation

\$50,000 – \$99,999

CAMPAC
Four-Four Foundation
Greater Milwaukee Foundation
Northwestern Mutual
Rockwell Automation
We Energies Foundation
Wells Fargo

\$25,000 – \$49,999

Bader Philanthropies
Patty and Jay Baker Foundation
BMO
Friends of Milwaukee Repertory Theater
Harley-Davidson Foundation
Husch Blackwell LLP
Johnson Controls
Milwaukee Public Schools
National Endowment for the Arts

\$10,000 – \$24,999

Associated Bank
Baird
Chase Family Foundation
Demmer Charitable Trust
Einhorn Family Foundation
Fiduciary Management
Foley & Lardner
Godfrey & Kahn S. C.
William N. and Janice V. Godfrey Family Foundation
Frieda & William Hunt Memorial Trust
Kohl's Corporation
KPMG
The Charles E. Kubly Foundation
The Marcus Corporation
PNC
Potawatomi Hotel & Casino
Reinhart Boerner Van Deuren S.C.
Studio Gear
West Bend Mutual Insurance Company
Wisconsin Arts Board

\$1,000 – \$9,999

ANON Charitable Trust
Burke Properties
CG Schmidt, Inc.
Cream City Foundation
Deloitte
Eppstein Uhen Architects

Ernst & Young, LLP
Ralph Evinrude Foundation
Froedtert Health
The Gardner Foundation
GRAEF
Greater Milwaukee Association of Realtors
Youth Foundation
Evan and Marion Helfaer Foundation
Dorothy Inbusch Foundation
Camille A. Lonstorf Trust
Mandel Group
ManpowerGroup
Marquette Associates, Inc.
Michael Best
Milwaukee Arts Board
Charles D. Ortgiesen Foundation
Jane Bradley Pettit Foundation
Phoenix Investors
PricewaterhouseCoopers
Quarles & Brady LLP
Spano Pratt Executive Search
Spear Arts Education Fund
Townsend Foundation
The VanderBloemen Group LLC

\$500-\$999

The Brookby Foundation
RSM US LLP

\$250 – \$499

Actors' Equity Foundation, Inc.
Urich Lock Co

Participants in the Matching Gift Program

AmazonSmile
American Family Insurance Dreams Foundation
American Transmission Company LLC
Eaton Corporation
ExxonMobil Foundation
GE Foundation
Great-West Financial
Greater Milwaukee Foundation
Bucyrus Foundation, Inc.
IBM Corporation
Illinois Tool Works Inc.
Johnson Controls Foundation
JPMorgan Chase Foundation
KPMG
Pfizer Foundation Matching Gifts Program
Reader's Digest Foundation
Rockwell International Corp. Trust Matching
Gift Program
Target
Verizon Foundation
We Energies Foundation
Wells Fargo

Milwaukee Rep welcomes gifts of securities and stocks. If you plan to make such a gift, please notify the Development Department at 414-290-0717 so we can properly credit and acknowledge your generosity.

Individual Giving

Luminary (\$100,000+)

Anonymous
Billie Kubly
Joel and Caran Quadracci
Julia and David Uihlein

Visionary (\$50,000-\$99,999)

Anonymous
Bladen and Julia Burns
Four-Four Foundation
David and Camille Kundert
Lubar Family Foundation
Marianne and Sheldon Lubar
Madeleine and David Lubar
Susan Lubar Solvang
Joan Lubar and John Crouch
Plunkett Family Foundation
Ed Seaberg and Patrick Smith
Craig and Mara Swan

Artistic Producer (\$25,000-\$49,999)

Anonymous
Melanie and Steve Booth
Christopher Harned and Elizabeth
Quadracci-Harned
Greg and Rhonda Oberland
Adam and Laura Peck
Gina and Eric Peter
Christine Symchych and Jim McNulty

Producer (\$10,000-\$24,999)

Anonymous (4)
Gretta Assaly
Michael Barber and Jacqueline Herd-Barber
Kellen and Matt Bartel
Richard and Jo Ann Beightol
Mark and Karen Bitzan
Bill and Priscilla Boelter
Robert C. Burrell
Croen Foundation, Inc.
Thomas J. and Deborah W. Degnan
Margaret Dethloff and Terri Zeh
Tom and Molly Duffey
Suzy B. Ettinger Foundation
Molly and David Fritz
The Lloyd Gerlach Family
Peter and Beth Gottsacker
Greater Milwaukee Foundation
Anthony and Andrea Bryant Family Fund
Donna and Tony Meyer Fund
Bill and Sandy Haack
John J. Halechko and Marc Colletti
Judy Hansen
Christy and Aaron Jagdfeld
Ted and Mary Kellner
Keyes Family
Connie and John Kordsmeier
Phoebe Lewis
Linda and Greg Marcus
John and Linda Mellowes
Jim Phillips
Bill and Linda Priebe
Paul and Patricia Purcell
Tom and Susan Quadracci
Milan Racic
Catherine and Buddy Robinson
Gayle Rosemann and Paul McElwee
Kathleen H. Seidel
David and Cheryl Walker
Stacy and Blair Williams
Carlene and Andrew Ziegler

Director (\$5,000-\$9,999)

Anonymous (2)
Fran and Lowell Adams
Adlon Partnership
Richard and Sara Aster
Isabel Bader
Bob Balderson
Donna and Donald Baumgartner
Ivor and Carol Benjamin
Wendy and Warren Blumenthal
James E. and Mary K. Braza

Randal and Mary Lynn Brotherhood
Elaine Burke
Timothy and Kathleen Carr
Chris and Judi Collins
Nancy Desjardins
Dr. Eric A. Durant
Don Fraker and Maja Jurisic
Rob Gardener and Lori Morse
Andres Gonzalez
Greater Milwaukee Foundation
Norman and Lucy Cohn Family Fund
Susan and Howard Hopwood Fund
Judith A. Keyes Family Fund
Clark and Lauri Green
Rich Grunke and Bill Grasch
John and Susan Harrits
Carla H. Hay
Peter and Linda Hotz
Bryan and Rebecca House
Kenton and Janet Howenstine
John and Marci Hunzinger
Jewish Community Foundation
Stephen and Jane Chernof Donor Advised
Fund
Lynda Johnson
Judy and Gary Jorgensen
Ruth DeYoung Kohler
Mark and Jenny Kopetsky
David and Jean Lauer
Kristine and Wayne Lueders
Robert and Susan Lueger
Kevin and Roseann Lyons Charitable Fund
Dawne and Ray Manista
Vince and Jan Martin
Merle and Sandra McDonald
Patti McKeithan
Vivian Moller
Dwight and Marleen Morgan
Abigail and David Nash
Drs. Mark and Jennifer Niedfeldt
Dr. David Paris
Joe and Katie Pickart
Allen and Pat Rieselbach
Chris Rowland
Clark and Diane Slipher
Curtis and Deborah Tomczyk
Harry and Mary Beth Van Groll
Kent and Marcia Velde
Nic and Sally Wahl
Teddy and Karin Werner

Designer (\$2,500-\$4,999)

Anonymous (2)
Helen Ambuel
Robert and Peggy Arfman
Amy Argall
Gary and Connie Bakker
Katharine Banzhaf
Richard and Diana Barthel
Chad Bauman and Justin Dunleavy
Jackie Behnke
Ginny Bolger
Warren Bullox
Mark Clements and Kelley Faulkner
Guy and Kathy Crane
Curt and Sue Culver
Sue D'Alessio
Jeff Drope and Victoria Teerlink
Bob and Teri Duffy
Kirt and Dixie Fiegel
James and Ellen Flesch
Patrick D. Gallagher
Franklyn and M. Anne Gimbel
Leland Hansen
Thomas Harty and Sharon Safford Harty
Katie Heil
Henry and Margery Howard
Suzanne and Michael Hupy
Steve and Karen Huser
Stephen and Roberta Isaacson
Jason and Hannah Jahn
Jewish Community Foundation
Dr. Burton E. Goodman and Harriet

Bocksensbaum
Micaela Levine and Tom St. John Donor
Advised Fund
Mike and Marie Johnson
Maureen Kanja Swokowski
Kristine Kile
John and Bronwen Knappenberger
Tim Kraetsch and Mike Wavra
Christine Krause
Kristine Krause and Scott Patulski
Marina and Frank Krejci
Terri and Dave May
Daniel J. and Constance P. McCarty
Robert and Susan Mikulay
Bob and Jan Montgomery
Elaine N. Peterson
Anthony Petullo Foundation
James and Morgan Phelps
Fred Pike and Cecilia Taylor
Alan and Carol Pohl
David and Pat Riersson
Paul and Lynn Rix
Richard and Karen Rodgers
Micky and Ron Sadoff
Jay and Anne Schamberg
Patrick W. Schmidt and Dewey J. Caton
Meredith and Thomas Scrivner
Sue and Bud Selig
John and Kristin Sheehan
Dr. Mark and Nancy Smuckler
Judy Snyder and Amy Stillman
Nita Soref
Laura Strain
Fred Stratton
Mike and Peg Uihlein
Judy Van Till
Connie Wilson and Mike Krueger
Raymond and Kelly Wilson
Wilfred Wollner
Joe and Mary Ann Zompa

Playwright (\$1,500-\$2,499)

Matteo Alioto
Sharee Allain and David Schertz
Astor Street Foundation
Bob Barthel
Mark Biehl
William and Barbara Boles
Larry Bonney
Robert and Sharon Brenner
Bruce and Marsha Camitta
James Cauley and Brenda Andrews
Thomas and Gisela Chelimsky
Jim and Marybeth Cottrill
Antony and Nikki D'Cruz
Russell and Sandra Dagon
Sandy and George Dionisopoulos
Thomas and Mary Domer
Tom Dornier and Sylvia Pratt
Jan Effinger
Dale and Mary Erickson
Jim Ericson
Susan and Gee Esslinger
Jeff and Kelly Fitzsimmons
Peter Foote and Robin Wilson
Jane M. Foster
Rick and Liz Gebhardt
Burzoe and Nancy Ghandhi
Mr. Stephen and Dr. Valerie Gigot
Jon and Nancy Gilmore
Greater Milwaukee Foundation
Joan and Peter W. Bruce Fund
Margaret Heminway Wells Fund
JB Fund
Schoonenberg Family Foundation Fund
Delphine Gurzynski
Paul and Gloria Halverson
Edward Hashek and John Jors
Dave and Judy Hecker
Kathleen Gray and Ron Hofer
Tom Irgens and Christine Culver
A. W. Janikowsky
Jewish Community Foundation

2019/20 DONORS

Pam Kriger Donor Advised Fund
 Deb and Peter Johnson
 Dr. Jack and Myrna Kaufman
 Don and Barb Koehler
 Lilane Koehn Mace
 Paul and Amy Kolo
 Robert and Gail Korb
 Vincent and Cathy Kotnik
 Bruce Kruger and Margaret Herrick
 Sandy Laedtke
 Kaye and Prakash Laud
 Perry Lieualleen and Darcy McManus
 Steven Liszewski
 Richard and Roberta London
 Jeannie Mantz
 Dr. Brent and Susan Martin
 Debesh and Linda Mazumdar
 Tom and Renee McCutcheon
 Julie and David Meier
 Jim and Sally Mergener
 Claudia and Joseph Moll
 The Mosher Family Foundation
 David Mullins and Steph O'Connor
 Chris and Ninveh Neuman
 Dr. Thomas and Elaine Pagedas
 Don Petersen and Corinthia Van Orsdel
 Earl Potter and Lani Williams
 Mrs. Susan B. Purtell
 Jim and Lys Reiskyt
 David and Roberta Remstad
 Susan Riedel
 Cornelia and John Riedl
 Jim and Andrea Schloemer
 Richard and Jean Schmalfeld
 Richard and Mary Schnell
 Howard Schoenfeld
 Marty and Elaine Schreiber
 Paul and Christy Schwan
 Aileen M. Smith
 Judith A. Steinke
 James and Elaine Sweet
 Susan and Jim Taylor
 Gile and Linda Tojek
 Elizabeth Vaeth
 Christine M. and Stephen C. VanderBloemen
 Greg and Jodi Wait
 Waukesha Community Foundation
 Thomas X. Herro Memorial Fund
 Neal and Cathy Wegner
 Dr. and Mrs. Paul Weisman
 Eric and Sarah Whyte

Stage Manager (\$1,000-\$1,499)

Anonymous (4)
 Jim and Terri Alioto
 Joaquin Altoro and Claudia Villarreal
 David and Carol Anderson
 Dorothy Anderson
 Keith and Paula Anderson
 Carla and Burt Bartlett
 Cristin and Jonathan Bock
 Cheri and Tom Briscoe
 Frank and Caryl Briscoe
 Kathleen Cepelka
 Susan Cerletty
 B. Lauren and Margaret Charous
 Thomas and Mary Belle Chatton
 Steve and Nancy Check
 Beverly Colton
 Dave and Jan Cronin
 Matt Cudney
 Lloyd Dickinson and Kristin Bergstrom
 Amy and Mark Diliberti
 Mary Paula Dix
 Carol Z. Dolphin
 The Duback Family Charitable Fund
 Michael and Janet Durham
 Stewart Edwards and Joanne Danforth
 Richard and Patricia Ehler
 Evelyn Ericson
 Feitler Family Fund
 Mary Lou M. Findley
 Thomas Fladeland
 Thomas and Marcia Flanagan
 Chris and Rory Foley
 Kari and Bill Foote
 Bill and Susanne Gay
 Jack Gebhardt and Deborah McKeithan-Gebhardt
 Adam and Carole Glass
 Jason and Diep Graham
 Frank and Renee Gonzales
 Greater Milwaukee Foundation
 Donald and Barbara Abert Fund
 Bechthold Family Fund
 Bernadine and Stephen Graff Fund
 Hepburn "Bootstrap" Foundation
 Journal Foundation
 Thomas and Mary Grossman
 Carmen Haberman
 Glen and Claire Hackmann
 Jill Heavenrich
 Ralph and Bonnie Hensel
 David and Darcy Hinz
 Mary Beth Holloway
 Kevin and Debra Hood
 Pam Hoover
 Jewish Community Foundation
 Mark and Cheryl Brickman Donor Advised Fund
 Dorene and Phil Paley Donor Advised Fund
 John Jump
 Brian and Mary Lou Kennedy
 Anthony and Susan Krausen
 Eric Larson and Susan Lewis
 Nancy and Arthur Laskin
 Graham Lewis
 Dr. Paul Loewenstein and Jody Kaufman
 Loewenstein
 Richard and Roberta London
 Thomas Mackenzie
 Mateo Family Trust
 Maureen and Michael McCabe
 Dan and Jill McElroy
 Jere McGaffey
 Doug and Vicky McManus
 Barbara McMath
 Anne and Tom Metcalfe
 Pamela Meyer
 Judith Miller
 Lynn Minella
 Don and Renee Mondano
 Chris and Anne Noyes
 Sarah Oberhofer
 John O'Hare
 Kathy and Alan Olsen
 David Olson and Claire Fritsche
 Joseph R. Pabst Charitable Fund
 Larry and Teri Pavelec
 Bruce and Candy Pindyck
 Carol Porth
 Jonas and Sylvia Prising
 Ronald and Anne Putzer
 Edwin and Beverly Puzia
 Dr. Thomas Raimann and Mick Dwyer
 Jim and Kris Rappé
 Brian and Amber Regan
 Joseph A. and Sarah Rock
 Rhoda Runzheimer
 Wayne and Christine Sage
 James Sanger and Mary Newton
 Pat Schlick
 Judy and Tom Schmid
 Bob and Carol Schmidt
 James and Kathi Scholler
 Thomas and Lori Schuster
 Linda L. Sell, MD
 Dennis Sheahan
 Scott and Dulcie Shoener
 Joseph and Amy Silvers
 Dianne Spector
 A.J. Star
 Emily and Joseph Steiner
 Robert Storm and Catherine Shaw
 Kathy Thornton-Bias
 Diane Kippenhan-Vollmer and James Vollmer
 Paul Wanat
 Rolf and Karen Wegenke
 Alan and Kathy Werth
 Richard and Lynn Wesolek

Jay and Laura Wigdale
 Prati and Norm Wojtal
 Pete and Penny Woodcock
 Gertrude Zauner
 Paul and Katherine Zavada
 Eve Joan Zucker

Principal Actor (\$500-\$999)

Anonymous (14)
 Richard and Joan Abdo
 Mike and Tia Abuls
 Mary and John Almasi
 Tom and Kathy Alpren
 Richard and Amy Balge
 George Banda
 Barbara Baron
 Martha Barry
 Brian and Rebekah Barsch
 Mike and Ellen Bartel
 Charles and Nancy Bauer-King
 Jack and Virginia Beatty
 Nina Beck
 Natalie Beckwith
 Phil and Liz Behling
 Monica Beitzel
 Terry Bell
 James and Andrea Bennett
 Suzan Ben-Poorat
 Gerald and Sydel Bergtrom
 Bill and Betsie Berrien
 Arthur and Carolee Beutler
 Big Art
 Greg Bird
 John Bjork, MD and Colleen Cornelius
 Edward and Amy Blumenthal
 James Boerner
 Troy Bretl
 Carla Brockman
 James Brown and Ann Brophy
 Chris Burgener and Linda Loke
 Bruce and Joan Butterfield
 Daniel and Allison Byrne
 Phil and Anne Callen
 Trish Calvy
 Bruce and Kathi Campbell
 Carolyn Campion
 José Carlino
 Brian Casey
 Sally Castle
 Mark and Terri Chelmoski
 Walt and Aleta Chossek
 Joseph and Julie Chusid
 Jay and Roxanne Ciatti
 Adam and Jennifer Cialrsky
 Kelly and Kathryn Clark
 Patricia and Secily Clason
 Bunny and Ron Cohen
 Mary and James M. Connelly
 Rochelle Connor
 Rev. David E. Cooper
 Danny and Jolinda Cunningham
 Mark and Julie Darnieder
 Jeff Davis and Rachel Schneider
 Susan Dawicke
 Larry and Eileen Dean
 Robert and Karen Dean
 Jane Dennis
 John and Jean Donovan
 Walter Dragan and Gloria Smiley
 Bette Drought
 Marie Dupuis and Peter Westergard
 Mike and Kathy Dwyer
 Eugene and Jean Eisman
 Rick and Karen Esenberg
 Bryan and Lyn Eskra
 Nathan and Susan Fair
 Gary Fait
 Christine L. Fenner
 Robert and Kristin Fewel
 Kenneth Finkel and Jane Delzer
 David and Janet Fleck
 William and Joy Franson
 Tim and Sue Frautschi
 Kurt and Kay Frederick
 Allan F. and Mary Ellen Froehlich

2019/20 DONORS

Stephen and Gail Froehlich
Richard S. and Ann L. Gallagher
Ralph and Paula Garcia
Rod and Linda Gehrig
Drs. Mark and Virginia Gennis
Cecilia Gilbert
Adam and Carole Glass
Jeff Glock and Jane Reilly
Larry and Geli Golopol
Michael Goodspeed and Gail Waring
Dale and Mary Graves
Paul and Christine Grebe
Bob Blitzke and Jane Grogan
Honorable Michael and Barbara Guolee
Steve and Karen Guy
Charles and Elizabeth Haas
Amy Harker-Murray
Dale and Sara Harmelink
Jim and Marge Hartwig
John Haydon and Grace McBain-Haydon
John Healy and Mary L. Tobin
Hilda Heglund
Erik Hekkers
Laurie and Keith Hickman
Hugh and Robin Hoffman
Andrew and Paula Holman
Hal Horneffer
Megann Hubbard
Janet and Bill Hume
Sandra A. Ivers
Roy H. Jablonka
Valerie Jablonka
Donald Jarchow
Jewish Community Foundation
Eileen and Howard Dubner Donor
Advised Fund
Joan and Michael Friedman Donor
Advised Fund
Sherwood E. and Libby S. Temkin
Donor Advised Fund
Dan and Pat Johansen
Bryon and Gwen Johnson
Greg and Jackie Johnson
Mary Johnson
Roy and Kathleen Johnson
Eric and Stacy Jossart
Evan and Paula Kaiser
Wendy Kamerling
Richard and Diane Kane
Debra Katz
Judith Katz
Allan Kauth
Raymond and Susan Kehm
Michael and Christy Kellman
Marilyn Kennedy
Robert and Judy Kettler
Jack and Audrey Keyes
Sang and Jiyeon Kim
John and Debbie Kissinger
Klassen Remodeling
Glenn Kleiman and Gisela Terner
Robert and Naomi Knoll
Kurt and Jean Kozma
John and Susan Krezoski
Stanley Kritzik
Henry Krokosky and Char Schall-Krokosky
Harvey Kurtz and Yvonne Larme
Janet LaBrie
Gary and Doris Langbruttig
Dan and Kathy Larsen
Jim and Teri Larson
William and Judith Laste
Larry and Mary LeBlanc
Justine Leonard
Lloyd and Sheri Levin
David and Mary Ann Lillich
Dawn Lindsey
Franklin Loo and Sally Long
Robert and Mary Loots
Peter Lovance
Paul and Patty Lucca
David Lundin and Agnes Lun
Jack Haensel and Stephanie Lyons
James and Ann Maher
John and Audrey Makowski

Benjamin and Ellen Mandelman
Brian and Susan Manthey
Jacqueline Servi Margis
Lee Marquardt
Andy and Janet Martin
Joseph Masterson
Maureen and Michael McCabe
Bernard and Susan McCartan
Katherine McCombe
Daryl and Rita Melzer
Steve and Ann Merkow
Charles Mesec
Jill Meyers
Howard and Sara Miller
Gregory and Susan Milleville
Robert and Jane Mitchell
Debra Moore
Gene and Linda Moore
William and Patricia Moren
Robin Mosleth
Bernie Mrazik and Jeanie Jerde
Barbara and Charles Murphy
Jerry and Lori Murphy
Jim and Betty Jo Nelsen
Sue Nelsen
Vern and Kay Nelson
The Nelson-Zirzow Fund
David and Jaclyn Ness
Joel and Donna Nettesheim
John and Jane Niebler
Jerry Niemiec
Paul and Kathrine Noran
Chandra and Chris Novoa
Marcia M. Olen
Frank and Joanne Paulus
John and Carol Pauly
Debby Penzkover
Matthew Perta
Kristine Phillips
Matthew and Laurie Piette
Melanie and Frank Popa
Toby Recht
Suzann Reichley
Robert and Pamela Reily
Patrick and Peggy Remfrey
Dr. John and Theresa Ridley
Donald Riegelman and Kathryn Rouse
Roger Ritzow
Daniel and Anna Robbins
Curt and Patty Robinson
Mary Roepke
Peter and Connie Roop
Barry Rosenblatt
Mason and Julie Ross
Gerard and Susan Ruedinger
Peter and Mary Runde
Tom and Judy Saeger
Linda Sampson
Richard A. Sauts Jr. and Diane K. O'Connor
Eric Schluter
Dean and Diane Schmelzer
Richard and Nicole Schmidt
Don and Laura Schmitt
Dr. and Mrs. Thomas Schneider
George Schroeder and Mary Arenberg
Beverly Schwabe
Clyde and Marge Schweitzer
Allison Scrivner
Hallie Sebens
Dr. Robert and Caryl Sewell
Jason and Kristin Shuler
Sandi Siegel
Leslie and Marcia Singer
Patrick and Janet Sinks
Brenda Skelton and Jim Bendtsen
Guy and Nancy Smith
Jean Smith
John and Mary Splude
Lorand and Cindy Spysers-Duran
Charles and Jennifer Stearns
Angela and Jayson Stermo
John Stern
Gillian Stewart
Michael and Linda Stolz
Bill and Judith Stone

Gregory Strowig
Loring M. Talsky
Sara Toenes
Renee and Joseph Tyson
Deanna Uradnick
Nicki Usinger
Sheryl Van Haren
Brendan Vierk
Greg and Carla Von Roenn
Benjamin and Rachel Wagner
Dan and Heidi Walker
Nina Walker
Jack and Margaret Ward
Robert and Kathleen Warner
Sargit Warriner
Mary and Fran Wasielewski
Ruth Way
Mary M. Wegener
Neal and Cathy Wegner
Mark and Anne Weitenbeck
Sue Wells
Alberta Whitaker
Susan Wiegner
Jim and Libby Wigdale
Frank and Vera Wilson
Richard and Margaret Winz
Gene and Carmen Witt
Lee Wolcott
Robert L. Woodbury
Ross and Sandy Workman
Scott and Jean Wrobbel
Lori Wucherer
Mike and Nancy Yttre
Mark and Evonne Zaleswski

Supporting Actor (\$250-\$499)

Anonymous (22)
7Summits LLC
Marlene Adland
Eugenia Afinoguenova
Selmalyn Allison
Nancy Amacher
Val and Bonne Anderson
Daniel Andrus
Barbara Armstrong
Jeff Arp
Robert W. Ater and Gregory W. Baer
John and Jenny Augustine
James and Kathleen Awe
Peter Balzer
Cheryl Banks
John and Carol Bannen
Elisabeth Banner
Paul and Elizabeth Bargren
Jim and Nora Barry
Donna Bartolone
Tom and Sally Basting
Jane Batten
Doris Bauer
Thomas Bauldry and Thomas Czirsy
Maureen Baumann
Charles Baumgardner and Susan Jans
Kevin Baumgart
Melissa and James Baxter
Paul and Lianne Becht
Donald Becker
Michael and Rita Becker
David Beyer
Ralph Bielenberg
Geoffrey and Karen Bilda
Clyde Bingman
Marsi Black
Barry Blackwell and Kathleen Eilers
Carol Block
Richard Blomquist
David and Sherry Blumberg
Mike and Mary Bohren
Raymond Booth
Darold and Cheryl Boree
Paul Bosanac
Scott and Sandy Botcher
Diane Bourquin
Gene Braaksma and Rebecca Bardwell
John and Sandra Braun
Liz and Larry Brewer

2019/20 DONORS

Rick and Mardi Bridich
Dan Brinzac
Andy and Lisa Bro
Carol Brown
Tom and Joanne Brown
Mr. and Mrs. Peter Buening
Building Waters Inc.
Mary Burke
Shannon and Jennifer Burns
Susan Burns
Peter and Laurie Byrne
Lewis Charles Cadkin and Susan Elizabeth
Cadkin Living Trust
Eileen Campbell
John and Kathleen Cantieri
Kim and Judy Casper
Bonnie Cass
Richard and Katherine Cattey
Gregory Chandler
Ron Chandler and Cynthia Herrera
Mary Cherweznik
Darlene Chiappetta
John and Marilyn Christiansen
Marcia Christianson
Joseph and Julie Chusid
James and Martha Clark
A.L. and Mary Ann Cleek
Lana and Rick Colbo
Jeffrey Coleman
Samuel and Sandra Colon
Robert and Christine Conroy
Carol Coppersmith
Marilyn Corlew
Donald and Suzanne Cornell
Constance Crooks
Diane Dalton
Tesseract Consulting Services LLC
Mark and Julie Darnieder
Richard and Mary Davenport
Barbara Davis
Diana Davis
William and Julia Davis
Tom DeChant
Laura DeGolier
Rod Dekruif and Valeria Rykowski
Shane and Keri Delsman
Kurt Deprey and Michael Murray
Mary DeVita
Christina Diaz
Gabriela Dieguez and Francisco Enriquez
Mary and Todd Dillmann
Dennis Dirix
Nina Dmitrieva
Candance Doerr-Stevens
Doug Doers
Kim and Ted Doheny
Bridget Donahue
Kathie and Bob Dye
Mary and Norm Dyer
Sally Edgett
Linda Edmondson
Mark and Jennie Ehrmann
Tina Eickermann
Rosemarie Eierman
Nancy Ellis
Nelson Ellis
Ramona Elmer
Dr. Dennis and Cecile Engel
Christina Englund
Paul and Karen Erickson
Emily Errthum
Suzanne Ettl
Tom and Peggy Fahl
Lisa Feldmeier
Jeannie and Noah Fenceroy
Dr. Michael and Terry Fetherston
Alexis Fielek
Michael Fielek
Mary Teresa Flaherty
Renee and Christopher Flowers
Eric and Bridget Fonstad
Bruce and Kathy Ford
James and DeDe Forester
Helen Forster
Kimberlee Foster

Janet and Stanley Fox
Natalie Frankel
John and Jane Frederick
Robert Freiboth
Gerald and Patricia Freitag
George Frick
Thomas and Deborah Gannon
Katherine M. Gehl
Tracy Geimer
David and Mary Gibeaut
Matthew and Nancy Gibson
Emmely Gideon
James and Sharon Gierahn
Thomas Giese
Gary and Faye Gieseemann
Lawrence and Hannah Goodman
Greater Green Bay Community Foundation
Wiers Family Fund
Greater Milwaukee Foundation
Mary and Charles Kamps Fund
James and Mary LaVelle Fund
James Green
James M. Green
John and Tamecia Greene
Paul Johnson and Patti Grieb
David and Dana Griffith
Barbara Griffiths
Robert and Barbara Gross
Ralph Gugerty
Bruce Gunderson
Carol Gustafson
Tom and Annette Heileman
Dan and Sue Haislmaier
Deirdre and Tom Halat
Colin Halfwassen
Halo Vino LLC
Sybille Hamilton
Arlene Hansen
Dr. James and Mary Ann Hanson
Rebecca Harms
Cliff and Susan Hartmann
Helen Hawke
Tim Hawks and Mary McCormick
Naomi Hawthorne
Karen Hebert
Joslyn Hegelmeyer
Thomas and Catherine Heinen
Richard and Jean Herman
Drs. Daniel and Nancy Herrell
Jerold Hershberger
Earl and Eugenie Hildebrandt
Alan and Jean Hilgeman
Donald Hill
Gary Holmes and Susan Holding
Dante and Jennifer Houston
George and Valerie Huhnke
Peter and Ashley Hundt
Chris Hutchinson and Laura DeLain
Kenneth and Mary Ingles
William and Karen Irwin
Michael Isaacson
Edward and Barbara Jacob
Dr. Peter H. and Jean Jacobsohn
Jewish Community Foundation
Bill and Idy Goodman Family Donor
Advised Fund
Lois Malawsky Donor Advised Fund
Sherry and Norm Malmson Donor
Advised Fund
Dorothy and Merton Rotter Donor
Advised Fund
James and Angela Jodie
Marilyn A. John
Allen and Sharon Johnson
David and Mel Johnson
Renee Johnson
Caroline Joyce
Larry and Holly Jurss
John and Coral Kaczynski
Marlene Kagen
Chuck Kahn and Patti Keating Kahn
Ruth Kallio-Mielke
Janine Kalowski
Mark and Ginny Kannenberg
Jean Kapolnek

Tom Karakis and Colleen Lese
Timothy and Mary Keane
Ellen Kellen
Edward F. Kelly
Marilyn Kennedy
Fredrick P. and Joan F. Kessler
Robert and Judy Kettler
Deonte Key
Joseph Knoch
Russell and Rose Marie Knoth
Mary Knudten
Martin Kohler
Terry and Mary Krall
Lee and Bonita Kraus
John and Diane Kretsch
Sharon Kruger
Kevin Kruschke
Peter Kuenzi
Anne Kumor
Dr. James and Elizabeth Kuplic
Brenda Kuske
Catherine La Fleur
Tom and Sally Lady
Thomas and Donna LaGuardia
Robert Lang
William and Jeanne Lange
Dennis and Jeanne Larsen
Steen and Janice Larsen
Jason and Kristy Lavann
Eugene and Gwen Lavin
Kathleen Layden
John and LaVonne Leonard
Mark and Cindy Levy
John E. and Karen M. Lewis
Dr. James and Jacqueline Lichty
Nancy Lindenberg
Rose Lopez
Dennis and Theresa Lowder
Ronald Luskin
Scott and Joyce Lutzow
Ellen MacFarlane
Jack and Joan Malin
Louis and Edythe Manza
Robert Marold and Diane Boldt
Jewel Martin
Frank and Rose Mary Matusinec
Don and Gerri Mayew
Victoria S. McCormick
Judith R. McGauran
Barbara McGinnis
Tom and Colleen McGuigan
Thomas and Cynthia McLinn
Alan and Nancy Meier
Dean Meier and Sally Nantell
Joyce Meinicke
Douglas and Annette Mickelson
Dennis and Judith Milbrath
Jay Miller and Donna Faw
Kenneth Miller and Margaret Blodgett
Mark Molot and Jequitta Kain Molot
Mary Moritz
Christine Mortensen
Emily Mueller
Richard and Isabel Muirhead
Peggy and Bill Mulligan
David Munoz
Terry and Debbie Murphy
Jim and Mary Fran Murray
Jack and Lucia Murtaugh
Howard and Elaine Myers
Karen Nelson
James and Elizabeth Neubauer
Ronni Nivala
Paul and Carolyn Noelle
Bob and Julie Norman
Kenneth and Elizabeth Nowakowski
Tonen O'Connor
Ed Olson and Linda Caldart-Olson
Jim and Claire Olson
Steve and Heide Olson
Dennis and Anne Oulahan
Karen E. Owens
Eric Oquist and Heather Deaton
Sandra Parish
Jason and Amy Parry

2019/20 DONORS

Mark and Laurie Pasch
Barry and Trish Paul
Sandra Pendell
Joan Petersen
Mark and Julie Petri
Peter and Rosemary Petroll
Marylene Pfeiffer
Andrew and Sara Pforr
Richard Pleister
James Polzin
Susan Porter
Richard Poulson and Janet Bean
Sarah Pratt, M.D.
William and Nancy Preston
Dr. Barbara Prindiville
Les and Wendy Proctor
Anthony and Anne Proite
Dr. Randall J. Raasch
Donald and Judith Rafenstein
Stephen and Susan Ragatz
Phil and Lynell Raiche
Donald and Mary Ellen Ralfs
Patrick and Noreen Regan
Ray and Mary Rentmeester
Richard Rezek
Werner and Carol Richheimer
William and Carol Roche
Brigid Rooney
Daniel and Carolyn Roskom
Pearl and James Ross
George and Dotty Roth
Bob Rothacker and Connie Gavin
Chuck Rozewicz and Maureen Fitzgerald
Catherine Rynkiewicz
Mark Sabin and Mary Moberg Sabin
Guadalupe Salinas
Nita Salzman
Barry and Kathy Sammons
Steven Sass
Matt and Betsy Sauer
Mark Sauter
Mike and Jan Schade
The Wilbert and Genevieve Schauer
Foundation
Steve Scheu
Paul Schmidtk
Richard Schmitt
Elliott Schnackenberg

Nancy Schneiders
Harold and Eleanor Schroeder
Barry Schulman and Cheryl Wolf-Schulman
Eleanore and Eugene Schulz
Lyman and Carol Schulz
Neal and Jeanne Seidler
Patrick Seraphine
Ronald and Judith Shapiro
Emily Shipman
Mark and Bonnie Siegel
Kirsten Simanonok
Robert and Cindy Simon
David Simpson and Debbie Schmidt
Gail Sklodowska
Mary Ann and Craig Skold
Katherine Smith
Mark and Minna Smith
Muriel Smith-Gross
Margaret Sohm
Sharon Sohner
Joyce and Albert Solochek
Barbra Kohl-Spiro and Hertzl Spiro
James and Kathleen Springer
Carol Sroka
Steven Stall and Jenny Paris-Stall
Scott and Mary Ellen Stanek
Jerrel and Judith Stanley
Alec Stapleton
Jeffery and Marjorie Stearns
Randel Steele and Margaret Gonzales
Bonnie Steindorf
Ronald and Patricia Stifter
George and Eileen Stone
Steven Stone and Julie Banzhaf-Stone
Richard and Susan Strait
The Streich Family Foundation
Dave and Kathy Sturgill
Geoffrey Swain
Susan Sweeney
The Syburg Family
Barry and Sue Szymanski
Thomas and Katharine Tanty
Paul and Donna Tanzer
Robert Taylor
Phyllis Teets
William Thiemann
Dean and Kathy Thome
Steven Tietz and Catherine Markwiese

Lynn Tolcott
Mark and Christina Toth
Thomas and Patricia Towers
Charles Trainer and Anne Booth
Triangle Enterprises, Inc.
Michele Tschopp
Andrea Turke
Douglas Turner
Ryan Turner
Bernadette Vitola
Randall and Gillian Vodnik
Vincent and Sarah Vogelsang
Richard Waak
Owen and Karen Walsh
Roger and Maricolette Walsh
Frank and Milena Walter
Jessica Ward
Jeff Waring
Nancy Blanchard Watts
Milton and Janet Weaver
Lance Weinhardt
Marie Weiss
Robert Welch
Stephanie Wesselowski
Ben and Julia Westphal
Donald and Melody Weyer
Caroline Wieman
Jullian Williams
Penny Williams
Tom and Marlys Williams
Melody Mrobbie Wilson
Warren Windau and Mary Loeffel
William and Anne Wingate
Zac Wolff and Sara Sackmaster
Jean Woller
Dan and Chris Woods
Marjorie Yoshida
Mike Yost and Lisa Schuldts
James and Erika Zaiser
Joan M. Zeiger
Mark Zellmer
Terrence and Cindy Zens
Ralph Zick
Sharon Ziegler
Thomas Zigan and Scott Jones
H. Russell and Georgianne Zimmermann

HONORING GIFTS

In Honor of Dr. Mary Arenberg and Dr. George Schroeder
Julie Bohnhoff-Overby
In Honor of Patsy Aster
Joan Hardy
In Honor and Appreciation of Patty and Jay Baker
James and Elaine Sweet
In Honor of Jay Baker's Birthday
Jack and Ruth Beck
In Honor of Katharine Banzhaf
Alfred Buettner
Steven Stone and Julie Banzhaf-Stone
In Honor of Matt and Kellen Bartel
Tommie and Monica Jones
In Honor of Leigh Birmingham
Andy and Amy Ardis
In Honor of Mark Clements and Chad Bauman
Micky and Ron Sadoff
In Honor of Bob and Karen Dean
Thomas and Suzanne McKale
In Honor of Peggy Flynn
D. Paulette Flynn

In Honor of Alex and Haley Gerding
Anonymous
In Honor of Brent and Kate Halfwassen's Wedding Anniversary
Colin and Karen Halfwassen
In Honor of Joe Hanreddy
Charles and Estella Lauter
In Honor of Deb Johnson's Birthday
Anonymous
Dale and Carolee Heinen
Lee Kingston
Donna Kuhtz
Phyllis Lardinois
Susan Psaris
David and Nancy Wareham
In Honor of Marina and Frank Krejci's 35th Anniversary
Peter Coffey and Kristine Cleary
In Honor of David and Camille Kundert's 50th Anniversary
Jim and Marge Hartwig
Mary Sorrentino
In Honor of Eli Kuzma
Jack Mitchell

In Honor of Carol Lowey
Kim and Judy Casper
In Honor of Rob and Carol Manegold
Julie and Mark Petri
In Honor of Patti McKeithan
Jack Gebhardt and Deborah McKeithan-Gebhardt
In Honor of Sally and Jim Mergener's 50th Anniversary
Jinny and Les Wilson
In Honor of Susan Robertson
Louis and Edythe Manza
In Honor of Chuck Rozewicz
Morgen Clarey
Amy Dorman
Alli Engelsma-Mosser
Meghan Roesner
In Honor of Ann F. Shepherd
Rebecca Harms

IN KIND GIFTS

James and Chris Duca
InSinkErator Division of Emerson Electric Co.
Kohler Co.
Randall and Pamela Penn
Bill and Gayle Roddick
Carol Ross

J. Richard and Karen Sendik
Stacie Stark
Richard Sternkopf and Kathleen Barry
John and Megan Susko
Nancy Weiss-McQuide
Julia Whitcomb

Judy Wick
Barbara Wrolstad
Daniel and Kathryn Yunk

MEMORIAL GIFTS

In Memory of Jean Apple

Deb and Peter Johnson

In Memory of Gloria Bergman

Richard Bergman

In Memory of Gerry Biehl

Diane Dalton

Janet and Bill Hume

Maureen Kania Swokowski

Ritz Holman LLP

Catherine Rynkiewicz

In Memory of Michael Bolger

Richard and Sara Aster

Bechthold Family Fund

Ginny Bolger

John and Caryl Brubaker

Roger and Regina Dirksen

Ken and Barbara Donner

Connie and John Kordsmeier

Sheldon and Marianne Lubar

Michael and Patricia McCauley

Jere McGaffey

Andrew Mendelson

Tony and Donna Meyer

Bob and Janet Montgomery

Patrick and Noreen Regan

Brigid Rooney

Dick and Fran Rubinstein

In Memory of Edie DeBrue

Alison Riedl

In Memory of James Allen Dix

Mary Paula Dix

George and Kathy Schneider

In Memory of Anne Dow

Norm and Judy Lasca

In Memory of Edward M. Dowling

Diane Dalton

In Memory of Byron T. and

Suzanne S. Foster

Foster Family Foundation

Elizabeth Vaeth

In Memory of Lloyd Gerlach

David and Carol Anderson

Dan and Gwen Armbrust

Robert W. Baird & Co.

Anthony and Andrea Bryant

Family Fund

Steve and Sue Gryniewicz

Bill and Sandy Haack

Ms. Carol S. Haack

Susan Hay and Mark Duszynski

Marina and Frank Krejci

Christine and John McDermott

James and Mary Jo Mueller

Peggy and Bill Mulligan

William Read and Mary Myers

Ann and Warren Pierson

Dr. Jeffrey and Pamela Shovers

Scott and Mary Ellen Stanek

Michael and Linda Stolz

YPO Gold Wisconsin Chapter

In Memory of F. William Haberman

Rose Sadlon

In Memory of Bob Holmes

Jan Effinger

In Memory of Richard Ippolito

Bill Dosemagen and Robin Ahrens

In Memory of Otho Kile Jr

Kristine Kile

In Memory of Dewonda K. Johnyak

Diane Dalton

In Memory of Irena Macek

Steve Macek

In Memory of Karl and Mona Malden

Bo Ivekich and Susan Dziedzic

In Memory of Patty McCallum

Thomas and Mary Domer

Thomas and Marcia Flanagan

Timothy and Mary Keaveny

Bruce and Jeanne Kress

Scott and Julie Miller

Mary Simkin

Joan Turner

In Memory of Jack McKeithan

Connie and John Kordsmeier

In Memory of Jo McReynolds Blochowiak

Kenneth Blochowiak

In Memory of Eleanor Repinski

Gillian Lester-George and

Manuel Montesinos

In Memory of Susan Robertson

Louis and Edythe Manza

In Memory of Peggy Rose

Katharine Banzhaf

Diane Dalton

In Memory of Vasumati Sabnis

Suman Sabnis

In Memory of Kathleen Schaefer

Rich Ciardo and Beth Dean

Thomas Herdeman and

Peggy Chapman

Allan and Mary Grau Rosenwald

Jo Ann Stade

In Memory of Kristine Schmidt

Kathryn Bloomberg

In Memory of Fr. John Sullivan

Eileen O'Sullivan

In Memory of Diane C. Treptow

Ron Treptow

In Memory of Jean Walker

Janet Dunst

In Memory of Edwin S. Watts, M.D.

Nancy Blanchard Watts

In Memory of Sandra Weber

A.J. Star

John Weber

Ask about
Preplanning.
Consultations
are free.

414.964.3111



Goodman•Bensman

WHITEFISH BAY | FUNERAL HOME

Earth-friendly. Dignified. Respectful.

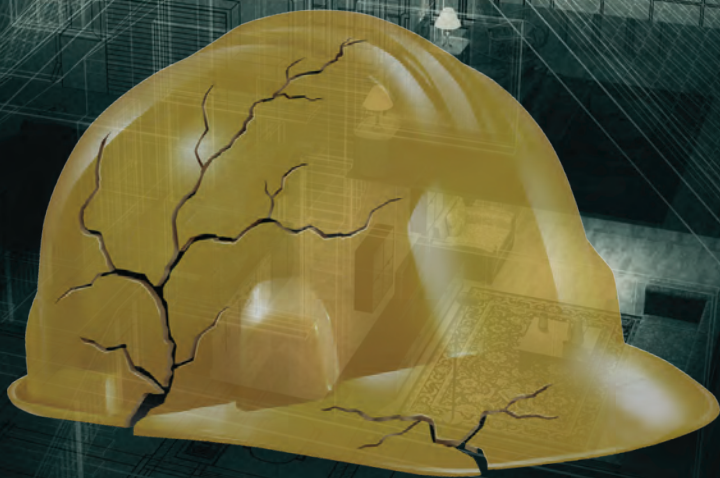
Traditional burial and cremation services are also available.

4750 North Santa Monica Blvd., Whitefish Bay | goodmanbensman.com

Debra Marcus Watton, President | Terry Kleinman, Preneed Consultant

a Small fire

by Adam Bock



January 30 - February 23, 2020

Emily, a successful business woman, suddenly and inexplicably begins to lose her physical senses. As her world changes, her relationships shift in poignant and revelatory ways.



255 S Water St | Milwaukee, WI 53204 | 414.278.0765 | nextact.org

2019-20 CONCORDIA PLAYERS THEATRE SEASON



MEET ME IN ST. LOUIS

NOV 7-9, 7:30PM | NOV 10, 1:30PM

JUNIE B. JONES THE MUSICAL

FEB 14-15, 7:00PM | FEB 16, 1:30PM



MEDEA

MEDEA

APRIL 23-25, 7:30PM | APRIL 25-26, 1:30PM

ROMEO AND JULIET

JUNE 18-20, 7:30PM | JUNE 20, 1:30PM



Romeo
& Juliet

Concordia University Wisconsin | Todd Wehr Auditorium
12800 N. Lake Shore Dr. | Mequon, WI 53097
Tickets: 262-243-4444 | Theatre Office: 262-243-2035



CONCORDIA
UNIVERSITY
WISCONSIN

A must see for adults 55+!



ST. RITA SQUARE

A CAPRI COMMUNITY

Yoga Studio • Multiple Dining Venues
Outdoor Piazza • Granite Countertops
In-Unit Laundry • Pet Friendly • Much More

★★★★

OPENING SPRING 2020

(414) 588-0039 | Milwaukee
StRitaSquare.com



GRACE COMMONS

A CAPRI COMMUNITY

Walking Paths • Multiple Dining Venues
Courtyard with Game Area & Fireplace
Exercise Room • Pet Friendly • Much More

★★★★

OPENING SPRING 2020

(262) 305-7646 | Menomonee Falls
GraceCommonsLiving.com

Rated M for Mature



Authentic • Abundant • Affordable



Rodizio's unique dining experience features endless sizzling grilled meats carved tableside complemented by unlimited sides and award-winning gourmet salads plus signature juices, cocktails and homemade desserts.

Group dining & private event spaces for holiday parties.

Parking validation and Weekend Valet

777 North Water St. | (414)431.3106 | rodizio.com



Dinner AND A Show



Arts calendar paired with local restaurants

Dinner AND A Show



RUDDIGORE (OR THE WITCH'S CURSE)

Skylight Music Theatre

Skylight and Milwaukee Opera Theatre collaborate to create an imaginatively reinvigorated performance of the gothic melodrama *Ruddigore*.

January 2 – 19

Studio Theatre at
Broadway Theatre
Center
(414) 291-7800



LOST IN BOSTON

Oconomowoc Arts Center

Hit Broadway shows sometimes cut great songs. Joel Kopischke, Rana Roman, and Ryan Cappleman bring to light rediscovered gems from well-known classics.

January 3 – 4

Oconomowoc Arts
Center
(262) 560-3172



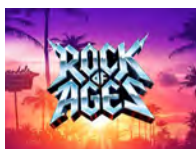
THE MERCY SEAT

Outskirts Theatre

September 12, 2001. A man and a woman explore the choices now available to them in an existence different from the one they had lived just the day before.

January 3 – 11

The Underground
Collaborative
(414) 367-6484



ROCK OF AGES

Greendale Community Theatre

Rock of Ages takes you back to the times of big bands with big egos playing big guitar solos and sporting even bigger hair!

January 9 – 18

Greendale High School
greendaletheatre.org



Bring in this ad
to receive

**ONE FREE
MARGARITA**

with the purchase
of a Dinner Entree.

Not good with any other offers.
Expires 3/31/20.

7118 West State Street | Wauwatosa, WI
414-258-5600
www.HECKTORS.com



PIER 106 106 W Wells St | Milwaukee, WI 53203
seafood tavern www.pier106seafoodtavern.com
— Milwaukee's Local Choice for Seafood —



JACKSON'S
BLUE RIBBON PUB

IN THE
HISTORIC BREWERY
NEIGHBORHOOD

**GOOD PEOPLE.
GREAT FOOD.
COLD BEER.**

1203 N 10TH STREET, MILWAUKEE, WI 53205
jacksonsmke.com



NORTH SHORE
NSB
BOULANGERIE

French
Pastries,
Breads,
Coffee and
Cafe Menu

4401 North Oakland Ave | 414.963.2153
www.northshoreboulangerie.com

Dinner AND A Show



ON GOLDEN POND

Racine Theatre Guild

With Norman's failing memory and health, this year is blanketed in melancholy until he forms an unexpected bond with his future grandson.

January 10 – 26

Racine Theatre Guild
(262) 633-4218



JOHN MUELLER'S WINTER DANCE PARTY

Oconomowoc Arts Center

Come in out of the cold as the OAC's Main Stage heats up with the iconic music of rock n' roll legends in *John Mueller's Winter Dance Party!*

January 11

Oconomowoc Arts Center
(262) 560-3172



THE LEGEND OF GEORGIA MCBRIDE

Milwaukee Repertory Theater

An Elvis impersonator with a baby on the way. When the owner of the bar hires a drag show to attract more customers, he's out of a job. Or is he?

January 14 –

February 9
Quadracci Powerhouse
(414) 224-9490



THE GOSPEL AT COLONUS

Skylight Music Theatre

With the ground-shaking thunder of a revival meeting and an electrifying gospel and blues score, it is an exuberant re-telling of Sophocles' *Oedipus at Colonus*.

January 16 – 26

Cabot Theatre
(414) 291-7800

WEISSGERBER'S
GOLDEN MAST INN
on Okauchee Lake

Lakeside Dining

W349 N5293 Lacy's Lane | Okauchee, WI
262-567-7047 | www.goldenmastinn.com

CRAFTING COMMUNITY SINCE 1997

740 N. PLANKINTON AVE.
(414) 276-3030 | WWW.ROCKBOTTOM.COM

ROCK BOTTOM
RESTAURANT & BREWERY

ELSA'S MARTINI

Our kitchen cooks until 1 a.m.
Our bar shakes & stirs until 2 a.m.

ELSA'S ON JEFFERSON 833

Fresh, Healthy, Modern

huvé

Vietnamese Inspired Cuisine

BAY VIEW
2691 S. Kinnickinnic Ave
414-294-0483

WAUWATOSA
6519 W. North Ave
414-585-0577

www.huerestaurants.com

Dinner AND A Show



THE MARVELOUS WONDERETTES

Sunset Playhouse

It's the 1958 Springfield High School prom where we meet Betty Jean, Cindy Lou, Missy, and Suzy, four girls with hopes and dreams as big as their crinoline skirts!

January 16 –

February 1

Furlan Auditorium
(262) 782-4430



TONY DESARE

Cedarburg Performing Arts Center

Named a Rising Star Male Vocalist by Downbeat magazine, DeSare has lived up to this distinction with his acclaimed concert performances.

January 17

Cedarburg Performing
Arts Center
(262) 376-6161



CHASIN' DEM BLUES

Milwaukee Repertory Theater

This revival of a Rep premiere (previously titled *Grafton City Blues*) explores the inspiring story of Grafton, Wisconsin's Paramount Records.

January 17 –

March 22

Stackner Cabaret
(414) 224-9490



SYMPHONIC POWER

Milwaukee Youth Symphony Orchestra

Featuring the Percussion Ensemble, Wind Ensemble, and Metropolitan Symphony Orchestra.

January 24

Uihlein Hall
(414) 267-2950



741 N Milwaukee St | Milwaukee, WI 53202
(414) 225-0000 | zarletti.net



Artisan Plates & Craft Cocktails • Skylight Lounge Open Late
Private Event Space Available

7754 Harwood Ave, Wauwatosa, WI • 414.431.1444
www.fireflytosa.com



vintage
38

wine bar • merch

5690 Broad Street
Greendale, WI



www.vintage38greendale.com



RUSTIC ITALIAN CUISINE

808 E CENTER ST | 414 455 3751
CENTROCAFERIVERWEST.COM






MODERN VINTAGE

OUR NEW TAKE ON STEAK

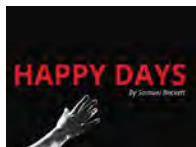
Modern with a vintage pedigree, indulge in acclaimed steaks, seafood & more at the heart of gaming excitement in downtown Milwaukee.

DREAM DANCE STEAKHOUSE™

- POTAWATOMI HOTEL & CASINO -

Explore the menu: paysbig.com/dining   

Dinner AND A Show



HAPPY DAYS

Renaissance Theaterworks

Winnie's buoyant optimism shields her from the harsh glare of the inevitable in Beckett's unforgettable masterpiece of modern theater.

January 24 –

February 16

Studio Theatre at
Broadway Theatre Center
(414) 291-7800



NOBLE VISION

Milwaukee Youth Symphony Orchestra

This concert showcases our flagship orchestra, the Senior Symphony, as well as the Brass Choir.

January 25

Uihlein Hall

(414) 267-2950



HARP SHOWCASE

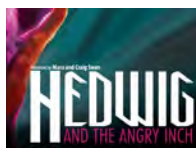
Frankly Music

Kelsey Molinari, harp, and Marta Aznavoorian, piano, make their FM debuts, joined by versatile returning cellist Alexander Hersh.

January 27

Schwan Concert Hall

franklymusic.org



HEDWIG AND THE ANGRY INCH

Milwaukee Repertory Theater

This musical sensation played to record-breaking sell-out crowds on Broadway telling the story of one of the most unique characters to ever hit the stage.

January 28 –

March 8

Stiemke Studio
Theater

(414) 224-9490



GOOD STEAK. GREAT VEGETABLES.

222 E Erie St, Milwaukee | 414.885.2611 | Chardmke.com



106 W SEEBOTH MILWAUKEE, WI 53204
414 763 1637 • WWW.SCREAMINGTUNA.COM

FREE DRINK

with purchase of another drink.

Y NOT II

708 E. Lyon St. • 347-9972

Please bring your theatre ticket stub or this ad to receive a free drink of equal or lesser value with the purchase of another drink.

One free drink per person per visit.

Expires 3/31/20.



Minutes Away,
Miles from Ordinary.

414.223.0100

649 East Erie Street Milwaukee

Chef driven cuisine, comfortable for all occasions

HAPPY HOUR MONDAY-FRIDAY 3PM-7PM

HOURS: Monday 4-cis • Tuesday-Sunday, 11-cis

www.milwaukeeesailloft.com

Dinner AND A Show



WINTERDANCES 2020

UWM Peck School of the Arts

Winterdances will feature a world premiere by dance faculty Simone Ferro, in collaboration with UWM Director of Bands John Climer.

January 30 –
February 2
Mainstage Theatre
(414) 229-4308



MARS LOST

Lake Country Playhouse

A world premiere about grief, loss and the lengths we are willing to travel in order to feel whole, written by local playwright, actor and director Justin Spanbauer.

January 31 –
February 16
Lake Country
Playhouse
(262) 367-4697



A SMALL FIRE

Next Act Theatre

Emily, a successful business woman, suddenly and inexplicably begins to lose her senses – first smell, then taste, then sight.

January 30 –
February 23
Next Act Theatre
(414) 278-0765



THE 25TH ANNUAL PUTNAM COUNTY SPELLING BEE

Skylight Music Theatre

A group of quirky, socially awkward over-achievers find joy, heartache, and a purpose as they compete in the Bee.

February 6 – 23
Cabot Theatre
(414) 291-7800



COME BACK

Waukesha Civic Theatre

Sky has been left with the task of finding the perfect resting place for her best friend's remains in an adventure teaching that it's not about the destination, but the journey.

February 6 – 23
Waukesha Civic
Theatre
(262) 547-0708



FOUR GUYZ IN DINNER JACKETS "NOW IN TECHNICOLOR"

Oconomowoc Arts Center

The sounds and sights of the Golden Age with stirring vocal harmony, comedy, and captivating choreography.

February 7 – 8
Oconomowoc Arts
Center
(262) 560-3172

2498 N Bartlett

414.763.4811

Contemporary American Cuisine • Craft Cocktails
www.TheOriginalMKE.com

HI-WAY HARRYS

- Weddings/Events
- Patio!
- 16 Tap Beers

MON - THURS 11A • FRI - SAT 11A • SUN 10:30A
920.699.9999 • www.hi-wayharrys.com
710 Glover Lane • Johnson Creek, WI

Dinner AND A Show



33 VARIATIONS

Falls Patio Players

A mother coming to terms with her daughter. A composer coming to terms with his genius. Even though they're separated by 200 years.

February 7 – 16

North Middle School Auditorium



MELODIOUS WOMEN

Wisconsin Philharmonic

Women's right to vote turns a century-old, commemorate this special occasion with performances by talented women composers.

February 9

Sharon Lynne Wilson Center

(262) 547-1858



MUSICAL DIALOGUES CONCERT

Philomusica String Quartet

Join us for the Philomusica String Quartet's February concert featuring Bach, Mozart, and Schumann.

February 10

Schwan Concert Hall

(414) 443-8702



JUNIE B. JONES, THE MUSICAL

Concordia University Theatre

A delightful adaptation of four of Barbara Park's best-selling books brought to life in a genuinely comical (and not strictly-for-kids) musical.

February 11 – 16

Todd Wehr Auditorium

(262) 243-4444



FLUTE FANFARE

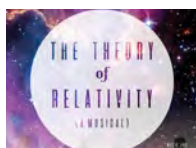
Milwaukee Youth Symphony Orchestra

This concert will feature MYSO's two flute choirs, Flute Chorale and Chamber Flute Ensemble.

February 12

Schwan Concert Hall

(414) 267-2950



THE THEORY OF RELATIVITY (A MUSICAL)

Marquette Theatre

This unconventional musical celebrates the theory that we are more connected than we realize and shares heartache, dreams, and our shared human connection.

February 14 – 23

Helpaer Theatre

(414) 288-7504



MOLINARI AND YARMEL DUO

4 O'clocks Free Concert Series

The MSO duo of Kelsey Molinari and Heather Yarmel celebrate Valentine's Day with an afternoon of intimate serenades for flute and harp.

February 16

First Congregational Church of Wauwatosa

Wauwatosa, WI 53213
(414) 258-7375



AUDIOBODY ELECTRONIC CIRCUS ARTS

Wisconsin Lutheran College

A mix of circus arts, relentless comedy, award-winning technology, full-body contortion, juggling, spectacular LED lighting effects, and upbeat music!

February 21

Schwan Concert Hall

(414) 443-8802

Dinner AND A Show



A FOX ON THE FAIRWAY

Racine Theatre Guild

Two rival country clubs are competing head-to-head in the Annual Inter-club Golf Tournament, and madcap adventures ensue.

February 21 –
March 8

Racine Theatre Guild
(262) 633-4218



NO WAKE

Milwaukee Chamber Theatre

With determination (and a bullhorn), elderly Peter Michaels is on a mission to save the loons of Lake Winnepesaukee, who are dying in record numbers.

February 21 –
March 15

Studio Theatre at
Broadway Theatre Center
(414) 291-7800



SYMPHONIC SPECTACULAR

Milwaukee Youth Symphony Orchestra

Featuring the Prelude Orchestra, combined String Orchestras North & Central, and Philharmonia.

February 22

Shattuck Auditorium
(414) 267-2950



CLASSIC CADENCES

Milwaukee Youth Symphony Orchestra

The combined String Orchestras South & West, Sinfonia, and Chamber Orchestra are featured.

February 23

Shattuck Auditorium
(414) 267-2950



NOISES OFF

Sunset Playhouse

As a company of actors attempts to deliver a comedy onstage, we go behind the scenes where the real farce explodes.

February 27 –
March 15

Furlan Auditorium
(262) 782-4430



CARRIE, THE MUSICAL

Outskirts Theatre

Based on Stephen King's bestselling novel. Carrie's just discovered she's got a special power, and if pushed too far, she's not afraid to use it...

February 28 –
March 8

Waukesha North HS
Auditorium
(414) 367-6484



ECLIPSED

Milwaukee Repertory Theater

Written by actress-playwright Danai Gurira comes a stunning tale of hope and resilience set in the midst of the Liberian Civil War.

March 3 – 29

Quadracci Powerhouse
(414) 224-9490



HANDEL'S MESSIAH

Waukesha Choral Union

We perform *Handel's Messiah* as this year's gift to the community. We welcome community singers to the stage with us for this majestic and powerful presentation.

March 8

Shattuck Auditorium
(262) 238-3454

Dinner AND A Show



THE LARAMIE PROJECT

Pius XI Performing Arts

Based on interviews after the murder of Matthew Shepard, this show tells the story of what happens when a small town is suddenly thrust into the spotlight.

March 12 – 15

Black Box Theatre

(414) 290-0204



BIG FISH

Waukesha Civic Theatre

Based on the hit book and film, *Big Fish* follows the stories of Edward Bloom, a father, husband, traveling salesman, and master storyteller.

March 12 – 29

Waukesha Civic

Theatre

(262) 547-0708



ELINA CHEKAN, GUITAR

4 O'clocks Free Concert Series

Expressive, delicate, versatile sounds of a classical guitar. UWM instructor Elina Chekan will amaze you with her prowess.

March 16

First Congregational

Church of Wauwatosa

Wauwatosa, WI 53213

(414) 258-7375



SYMPHONY SHOWCASE

Frankly Music

A finale showcasing the stellar musicians of the Milwaukee Symphony Orchestra.

March 16

Schwan Concert Hall

franklymusic.org



EVITA

Skylight Music Theatre

The story follows Eva Duarte and her meteoric rise from impoverished child to becoming the most powerful woman in Latin America.

March 19 – 29

Cabot Theatre

(414) 291-7800



RICKY NELSON REMEMBERED

Cedarburg Performing Arts Center

Ricky Nelson Remembered is a musical celebration of America's first Teen Idol and Rock and Roll Hall of Famer Ricky Nelson.

March 20

Cedarburg Performing

Arts Center

(262) 376-6161



THE SECRET GARDEN

Lake Country Playhouse

This enchanting classic of children's literature is re-imagined in brilliant musical style by composer Lucy Simon and Marsha Norman.

March 20 – April 5

Lake Country

Playhouse

(262) 367-4697



SOMETHING ROTTEN!

Peninsula Players Theatre

Welcome to the Renaissance, where the Bottom brothers craft the first musical to compete with "the Bard."

July 8 – 26

Peninsula Players

Theatre

(920) 868-3287



Life Enriched

Trust Clement Manor for a Continuum of Care

- Adult Day Services
- Independent and Assisted Living
- Transitional Care • Long-Term Care
- Clare Suites Memory Care Assisted Living
- Center for Enrichment

CALL US TODAY TO SCHEDULE A VISIT!

3939 S. 92nd St., Greenfield, WI
(414) 546-7000 | clementmanor.com

Clement
Manor

Sponsored by the School
Sisters of St. Francis



REDESIGN

your old or broken jewelry and

FALL IN LOVE

...again!



Modernize an old setting,
recreate an estate piece,
turn ordinary into
extraordinary.

We make it special. We make it unique. **We make it just for you.**

EAST • TOWNE • JEWELER
CUSTOM DESIGN SPECIALIST
Inc.

**EAST TOWNE SQUARE • 1515 WEST
MEQUON RD., MEQUON • 262.241.8007
www.easttownejewelers.com**

Subscribe to our
email newsletter on
footlights.com!



Stay up to date on performing arts stories
and events in Milwaukee and Madison!



Giving in small ways can make a **big difference.**

We all have gifts to give and they each can make a big difference. Tune in to Milwaukee's Philanthropic Community on Sundays at 10am on WISN AM1130 or listen on demand to learn how you can make an impact in our community.



The Heart of Milwaukee Philanthropy™



Milwaukee's Philanthropic Community is brought to you by Ellenbecker Investment Group.

Listen on demand at **ellenbecker.com/radio** or on the following:



Exceptional Planning. Extraordinary Service.®

Advisory services offered through Ellenbecker Investment Group, Inc. (EIG), a Registered Investment Advisor. Registration does not imply a certain level of skill or training.