

**EXTENDED**  
Through May 20!

# *Always... Patsy Cline*

Written and originally  
directed by Ted Swindley  
Based on a true story  
Directed by Sandy Ernst

*Always...  
Patsy Cline*

**Play Guide written by**

Jordan Hunt  
*Education Intern*

**Play Guide edited by**

Leda Hoffmann  
*Education Coordinator*

Lisa Fulton  
*Marketing Director*

Brent Hazelton  
*Associate Artistic Director*

Jenny Kostreva  
*Education Director*

Neal Easterling  
*Education Assistant*

**Graphic Design by**  
Megan Gadiant



**Tickets: 414-224-9490**  
**www.MilwaukeeRep.com**

Mark Clements  
*Artistic Director*

Dawn Helsing Wolters  
*Managing Director*

**MILWAUKEE REPERTORY  
THEATER**  
108 E. Wells Street  
Milwaukee, WI • 53202



# **ALWAYS . . .PATSY CLINE**

## **PLAY GUIDE**



Patsy Cline with band.

Milwaukee Repertory Theater presents

*Always . . . Patsy Cline*

**EXTENDED! Now through May 20, 2012**

*Stackner Cabaret*

Written and originally directed by Ted Swindley - based on a true story

Directed by Sandy Ernst

“We end our 2011/12 Season in the Stackner Cabaret with an inspirational tribute to one of the greatest singers in the history of country music. I love her songs, and I can’t wait to hear them live in the Stackner backed by an onstage band.”

-Mark Clements, *Artistic Director*



## **TABLE OF CONTENTS**

Page 3	Synopsis
Page 4	Patsy Cline Biography
Page 6	Interview with Kelley Faulkner, The Rep’s Patsy Cline
Page 7	Visiting The Rep
Page 8	2012/13 Stackner Season



# THE SYNOPSIS

Based on a true story, *Always . . . Patsy Cline* recalls music legend Patsy Cline and her real-life friendship with Louise Seger. The story begins with Louise sitting at her kitchen table. She confesses she would call into her local radio station nearly every day to request a Patsy Cline song. During one of those requests, the station DJ mentions to Louise that Patsy will be performing in Louise's hometown that night. At that night's performance,



Louise Seger

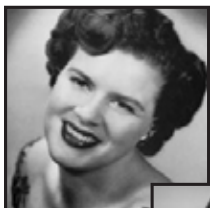
Louise arrives at the dance hall early and meets Patsy Cline. The two become fast friends, and Patsy even lets Louise join her on stage. Patsy performs her show, singing hits such as "Walkin' after Midnight," "Crazy," and "I Fall to Pieces."

After a full evening together, Louise drops Patsy off at the airport and they promise to keep in touch. They do, exchanging letters for several years. Louise finally describes hearing an announcement, years later, that Patsy Cline died in a plane crash. The show ends with Patsy returning to the stage and singing farewell songs with Louise.

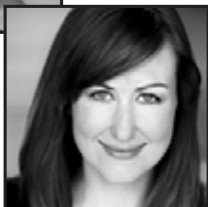


Patsy Cline Album

## THE CHARACTERS



**PATSY CLINE**  
(Kelley Faulkner)



The legendary country singer.



**LOUISE SEGER**  
(Angela Iannone)



Longtime fan and friend of Patsy Cline.

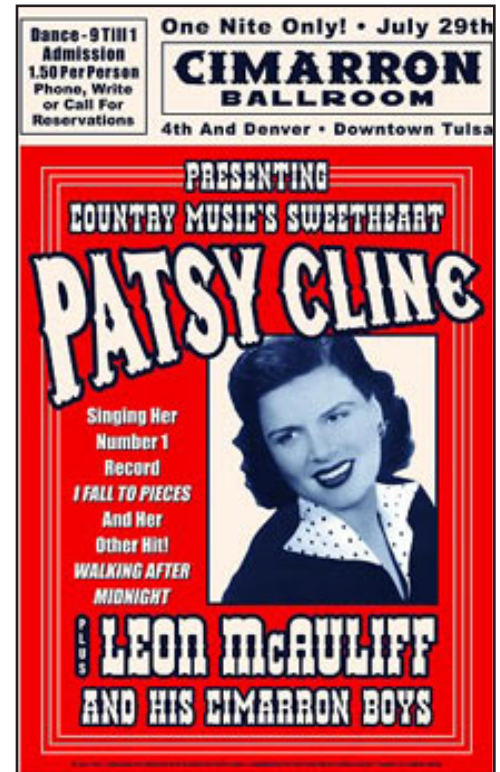


Angela Iannone, Kelley Faulkner and band in The Rep's 2011/12 *Always . . . Patsy Cline*.  
Photo by Michael Brosilow.

# PATSY CLINE

Virginia Patterson Hensley, who would later be known as Patsy Cline, was born September 8th, 1932, in Gore, Virginia, to Samuel Hensley, a 43 year old blacksmith, and Hilda Patterson Hensley, a 16 year old seamstress. The two were married six days before Patsy was born. Patsy had an early interest in singing and sang in the church choir. When she turned 13, Patsy developed rheumatic fever, which resulted in a throat infection. When she recovered, she discovered that her voice had changed, and she now “had this booming voice like Kate Smith’s.” When her father left in 1947, Patsy dropped out of high school to help support her family. That same year, after standing in the hallway of a radio station for several weeks watching the other performers through a window, Patsy sang on the air for the first time, was well received, and was asked to return.

Patsy met Gerald Cline, a general contractor, in her early 20s and married him in 1953. In 1955, Four Star – a subsidiary of Decca Records, the label with which Patsy would find long term success – signed her to her first recording contract. On January 7, 1956, Patsy appeared on network television for the first time, singing on ABC’s *Grand Ole Opry*. Later that year, she recorded her first album, *Patsy Cline*, which featured the song “Walkin’ after Midnight”. She also met her future husband, Charlie Dick, in that same year. In 1957, Patsy and Gerald divorced, due to Gerald’s desire for Patsy to take a more traditional housewife’s role, and Patsy’s desire to sing professionally. On January 21<sup>st</sup>, 1957, Patsy appeared on Alfred Godfrey’s *Talent Scouts* and won. This exposure led to “Walking after Midnight” reaching No. 2 on the country charts and No. 12 on the pop charts, making her one of the first female singers to have a crossover hit.



Patsy Cline Poster

## Some of Patsy Cline's Hit Songs

“Walkin’ After Midnight”  
“Sweet Dreams (of You)”  
“Crazy”  
“I Fall to Pieces”  
“So Wrong”  
“Strange”  
“Back in Baby’s Arms”  
“She’s Got You”  
“Faded Love”  
“Why Can’t He Be You”  
“You’re Stronger Than Me”  
“Leavin’ on Your Mind”

In 1960, she was asked to join the cast of the *Grand Ole Opry*, a weekly concert, and her contract with Four Star ended. She immediately signed with Decca Records, and in 1961 released “I Fall to Pieces,” a single that hit No. 12 on the pop charts and No. 6 on the adult contemporary charts, making her a true household name. In June of that year, Cline was in a horrible car accident; she was thrown into the windshield and nearly died. After a month in the hospital, Cline needed a new hit. She found one in Willie Nelson’s “Crazy,” a song which she initially hated.

During the next few years, Patsy was truly at the peak of her career, with successes including: being the first female country singer to headline her own show; headlining



the Hollywood Bowl with Johnny Cash (who introduced her as “The One and Only Patsy Cline”); and being the first female country singer to headline a Las Vegas show.

On March 5th, 1963, Patsy boarded a small plane headed from Kansas City to Nashville with fellow country singers Hankshaw Hawkins and Cowboy Copas. The pilot, who was also her manager, Randy Hughes, was not instrument-trained and flew only visually, a feat nearly impossible in the heavy rain through which they were flying. At approximately 6:20 pm, the plane went down near Camden, Tennessee, a small town only 90 miles away from her intended destination of Nashville.



Newspaper article on Patsy Cline's death.

## **FURTHER READING**

*Honky Tonk Angel:  
The Intimate Story of Patsy Cline*  
by Ellis Nassour

*Patsy: The Life And Times  
Of Patsy Cline*  
by Margaret Jones

## **FURTHER VIEWING**

*Sweet Dreams*  
with Jessica Lang and Ed Harris  
A film about Patsy's relationship  
with second husband Charlie Dick  
and her career up to her death.

*Coal Miner's Daughter*  
with Sissy Spacek and Tommy Lee Jones  
A film about Patsy's friend and  
fellow country star Loretta Lynn



Kelley Faulkner in The Rep's 2011/12 *Always . . . Patsy Cline*. Photo by Michael Brosilow.



Kelley Faulkner and Angela Iannone in The Rep's 2011/12 *Always . . . Patsy Cline*. Photo by Michael Brosilow.

# INTERVIEW WITH KELLEY FAULKNER, THE REP'S PATSY CLINE

**Jordan Hunt:** Were you a Patsy Cline fan before you started working on this show? What was your previous exposure to her?

**Kelley Faulkner:** I was a HUGE Patsy fan already! In fact, I had a Patsy Cline karaoke tape that I would sing along with at home as a little girl. I have always loved her music.

**JH:** What is it like to play a character based on a real person, with such a distinct personality and a well-known voice?

**KF:** It is definitely daunting. Her voice was so unique and special, and audiences will have a very specific expectation of me as a performer. I think my vocal quality is similar enough to Patsy's naturally to make a credible impersonation possible. I don't want this performance to just be an impersonation, though. I think it is important to really live in this role and sing these songs from my gut. Patsy was known for expressing deep emotion through her music, and I hope to do the same.

**JH:** Outside of rehearsals, what are some ways you have prepared for this production?

**KF:** Fortunately, there is quite a bit of research material for me to dig into. I have watched her television appearances on YouTube, seen a couple of documentaries, read a biography, and, of course, listened to all of her great music. A few months ago, I started putting on my Patsy playlist in the mornings while I played with and fed my daughter, and it was a great way to learn lyrics!

**JH:** What is the thing you most enjoy about portraying Patsy Cline?

**KF:** It is extremely gratifying to play such a strong woman in history. By all accounts, she was a kind and loyal person, but lord help you if you stood in her way! She was feisty, opinionated, and a perfectionist. She was such a trailblazer for women not only in country music, but music in general. The way she dressed, the material she chose, and the way she performed were all pretty daring at the time. And obviously getting to sing this music is such a treat.

**JH:** What are some of the challenges that have been unique to this play?

**KF:** This is the first time I have played a real person, so there is a whole extra layer of work as an actor in getting her voice and mannerisms down. Also, although I have played big roles before, this is probably the most challenging vocally as I sing 26 songs every show. That's a lot. The songs sit comfortably in my range, but it is key that I pace myself. I have to remember that I am a vocal athlete, and athletes need to care for their muscles in a specific way – by warming up, warming down, being aware of any strain or soreness, and rest, rest, rest!



Patsy Cline



# VISITING THE REP

Milwaukee Repertory Theater's Patty and Jay Baker Theater Complex is located in the Milwaukee Center downtown at the corner of Wells and Water Streets. The building was formerly the home of the Electric Railway and Light Company.



Milwaukee Repertory Theater. Photo by Michael Brosilow.

The Ticket Office is visible on the left upon entering the Wells Street doors. The Stackner Cabaret is located on the second level, accessible via escalator. Arrive early and enjoy a delicious meal or preshow drinks and appetizers in a fun atmosphere. Reservations are preferred. Please call **414-224-9490**.

**THE REP VALUES YOUR SUPPORT:** Financial support enables The Rep to do more, by:

- Advancing the art of theater with productions that inspire individuals and create community dialogue;
- Providing a richer theater experience by hosting Rep In Depth, Director's Dialogues, and Talkbacks, and creating Play Guides to better inform our audiences about our productions;
- Educating over 20,000 students at 200+ schools in the greater Milwaukee area with Rep Immersion Day experiences, student matinees, workshops, tours, and by making connections with their school curriculum through classroom teaching programs such as Reading Residencies and Scriptworks;
- Maintaining our commitment to audiences with special needs through our Access Services that include American Sign Language interpreted productions, captioned theater, infrared listening systems, and script synopses to ensure that theater at The Rep is accessible to all;
- Training the next generation of theater professionals with our Artistic Internship Program, which gives newly-degreed artists a chance to hone their skills at The Rep as they begin to pursue their theatrical careers.

**We value our supporters and partnerships and hope that you will help us to expand the ways in which The Rep makes a positive impact on theater and on the Milwaukee community.**

**Donations can be made on our website at [www.MilwaukeeRep.com](http://www.MilwaukeeRep.com) or at 414-224-9490.**

**Or feel free to directly contact one of the individuals listed below:**

## **CORPORATE OR FOUNDATION GIFTS**

Nina M. Jones  
*Institutional Giving Manager*  
414-290-5348  
[njones@milwaukeeerep.com](mailto:njones@milwaukeeerep.com)

## **INDIVIDUAL GIFTS**

Anne Cauley  
*Individual Giving Manager*  
414-290-5376  
[acauley@milwaukeeerep.com](mailto:acauley@milwaukeeerep.com)

## **SPECIAL EVENTS**

Becca Kitelinger  
*Special Events Manager*  
414-290-5347  
[bkitelinger@milwaukeeerep.com](mailto:bkitelinger@milwaukeeerep.com)

You can also contact Tamara Hauck, *Director of Development* at 414-290-5366 or [thauck@milwaukeeerep.com](mailto:thauck@milwaukeeerep.com).

**AUDIENCE EDUCATION SUPPORT PROVIDED BY:**



**The Rep receives support from:** The Lynde and Harry Bradley Foundation • The Richard & Ethel Herzfeld Foundation

# THE REP'S 2012/13 STACKNER SEASON

## *Gutenberg! The Musical!*

Written by Scott Brown & Anthony King

**August 21 – October 14, 2012**

Three men, one piano, thirty baseball caps – and one massively misguided dream! In 1450, in Mainz, Germany, Johann Gutenberg invented the printing press; in 2011, in Nutley, New Jersey, Bud and Doug wrote a big, splashy musical about him, the evil monk trying to stop him, and the beautiful girl who loved him. They may not have a cast, an orchestra, or a clue, but with an unending supply of enthusiasm, they're pitching their hilarious, sixteen-song epic to Broadway producers who just might fulfill their bright-eyed ambitions!

## *Blues in the Night*

Conceived and Originally Directed by Sheldon Epps

Original Vocal Arrangements and Musical Direction by Chapman Roberts

Orchestrations & Additional Vocal Arrangements by Sy Johnson

**October 19- December 23, 2012**

The universal language of the blues speaks eloquently in this scorching, Tony-nominated musical! The twenty-six hot, torchy numbers that tell the sweet, sexy, and sorrowful stories of four colorful inhabitants of a 1930s Chicago saloon will leave you energized, inspired, and ready to wail. This dynamite revue features blues classics from Duke Ellington, Benny Goodman, Bessie Smith, and many more, packed into a larger-than-life score that'll bring down the house!

## *Mind Over Milwaukee*

By Marc Salem

**December 28, 2012 – February 24, 2013**

Mentalist Marc Salem brings his interactive stage show to The Rep for an experience that will leave you astounded, dumbfounded, and believing the unbelievable! Using psychological techniques, a sharp eye for human nature, a quick wit, and more than 20 years of close study, Mr. Salem creates a mystifying, often hilarious show that explores the depths and true capabilities of the human mind.

## *Ring of Fire: The Songs of Johnny Cash*

Created by Richard Maltby

Conceived by William Meade

Orchestrations by Steven Bishop and Jeff Lisenby

**March 1 – May 5, 2013**

From the iconic songbook of Johnny Cash comes this unique musical about love and faith, struggle and success, rowdiness and redemption, and home and family. More than two dozen classic hits—including “I Walk The Line,” “A Boy Named Sue,” “Folsom Prison Blues,” and the title tune—performed by a multi-talented cast, paint a musical portrait of The Man in Black that promises to be a foot-stompin', crowd-pleasin' salute to a uniquely American legend!